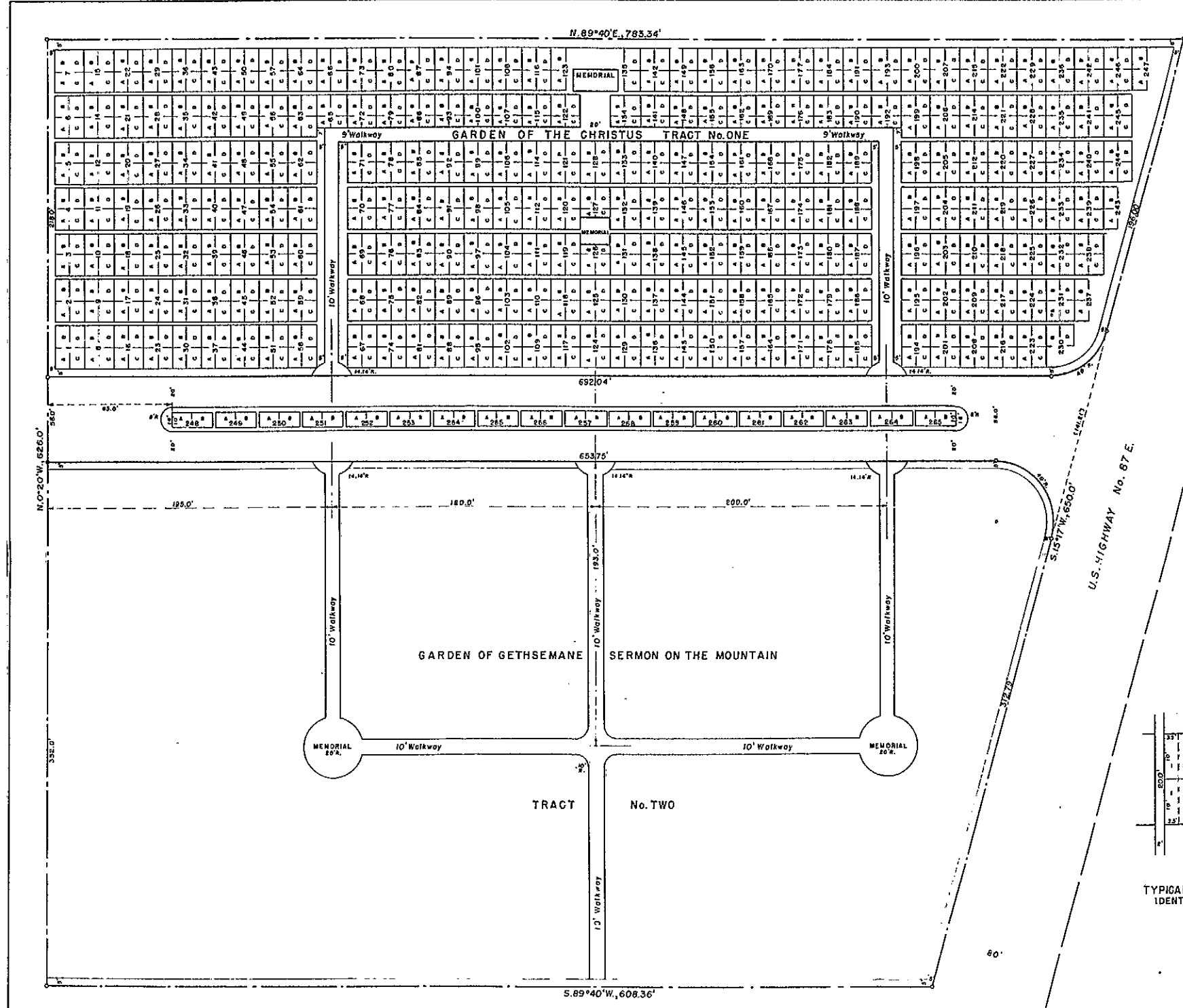


151/158



CERTIFICATE OF SURVEYORS

State of Wyoming SS
 County of Natrona
 We, H.L. Worthington and E.C. Lenhart, do hereby certify that this map was made from notes taken during an actual survey made by us during the month of March, 1954, that it correctly represents the tracts, lots, driveways and walkways as marked on the ground with iron pipe at all tract corners and iron pipes set of the centers of lots as indicated by legend. We further certify that the land embraced in this subdivision is a part of the NE 1/4 SW 1/4 of Section 29, T. 34 N., R. 79 W., 6th P.M., being more particularly described as follows: Beginning at the point of intersection of the west R/W line of U.S. Highway No. 87 E. and the north line of said SW 1/4, which point bears S. 89° 40' W. a distance of 436.0 feet from the NE corner of said SW 1/4 of Sec. 29, thence S 15° 17' W. along said Highway R/W line a distance of 650.0 feet to a point, thence S. 69° 40' W. parallel to the north line of said SW 1/4 a distance of 608.36 feet to a point, thence N. 0° 20' W. a distance of 626.0 feet to a point on the north line of said SW 1/4, thence N. 89° 40' E. along the north line of said SW 1/4 a distance of 783.34 feet to a point on the west R/W line of U.S. Highway No. 87 E., said point being the point of beginning. All in the NE 1/4 SW 1/4 of Section 29, T. 34 N., R. 79 W., 6th P.M. and containing 10 Acres, more or less.

CERTIFICATE OF DEDICATION

Know all men by these presents, that Wyoming Memorial Gardens, Incorporated, a Corporation organized and operating under the laws of the State of Wyoming, owners in fee simple of the land embraced in this plot and description of NATRONA MEMORIAL PARK, acting through the President and Secretary of said Corporation, hereby declares the subdivision of the within described land as appears on this plat, to be its free and voluntary act and deed and does hereby dedicate the within described land to be used for cemetery purposes and does hereby dedicate to the use of the public forever all of the walkways and driveways shown hereon.

Wyoming Memorial Gardens, Inc.
 Attest: *Earle Smith* Secretary
H.L. Worthington President

ACKNOWLEDGEMENT

STATE OF Wyoming SS
 COUNTY OF Natrona
 On this 22 day of March, A.D. 1954, before me, a Notary Public in and for the State of Wyoming, personally appeared H.L. Worthington and Earle Smith, to me known to be the persons described in and who executed the within and foregoing dedication and acknowledged said instrument to be their free and voluntary act and deed of Wyoming Memorial Gardens, Inc., that the seal affixed to said instrument is the corporate seal of said corporation, that said instrument was signed and sealed in behalf of said corporation by authority of its Board of Directors and said H.L. Worthington and Earle Smith acknowledged that they are, respectively, the President and Secretary of said corporation.

In Witness Whereof, I have hereunto set my hand and affixed the seal of my office the day and year first above written.

My commission expires July 5, 1956

H.L. Worthington
 Notary Public
 Residing at Manchester, Wyoming

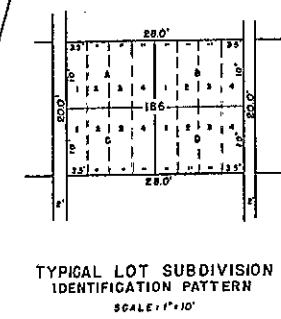
APPROVED:
 Board of County Commissioners of Natrona County, Wyoming
 by Resolution duly passed on the 4th day of May 1954.

Ernest M. Smith
 Chairman of Board

Attest: *Earle Smith*
 County Clerk

Dated May 4th, 1954.

Inspected and Approved:
May 4, 1954 *Alfred M. Quill*
 County Surveyor.



NATRONA MEMORIAL PARK
 A SUBDIVISION OF A PORTION OF THE
 NEWS 1/4, SECTION 29
 T. 34 N., R. 79 W., 6th P.M.
 NATRONA COUNTY, WYOMING.