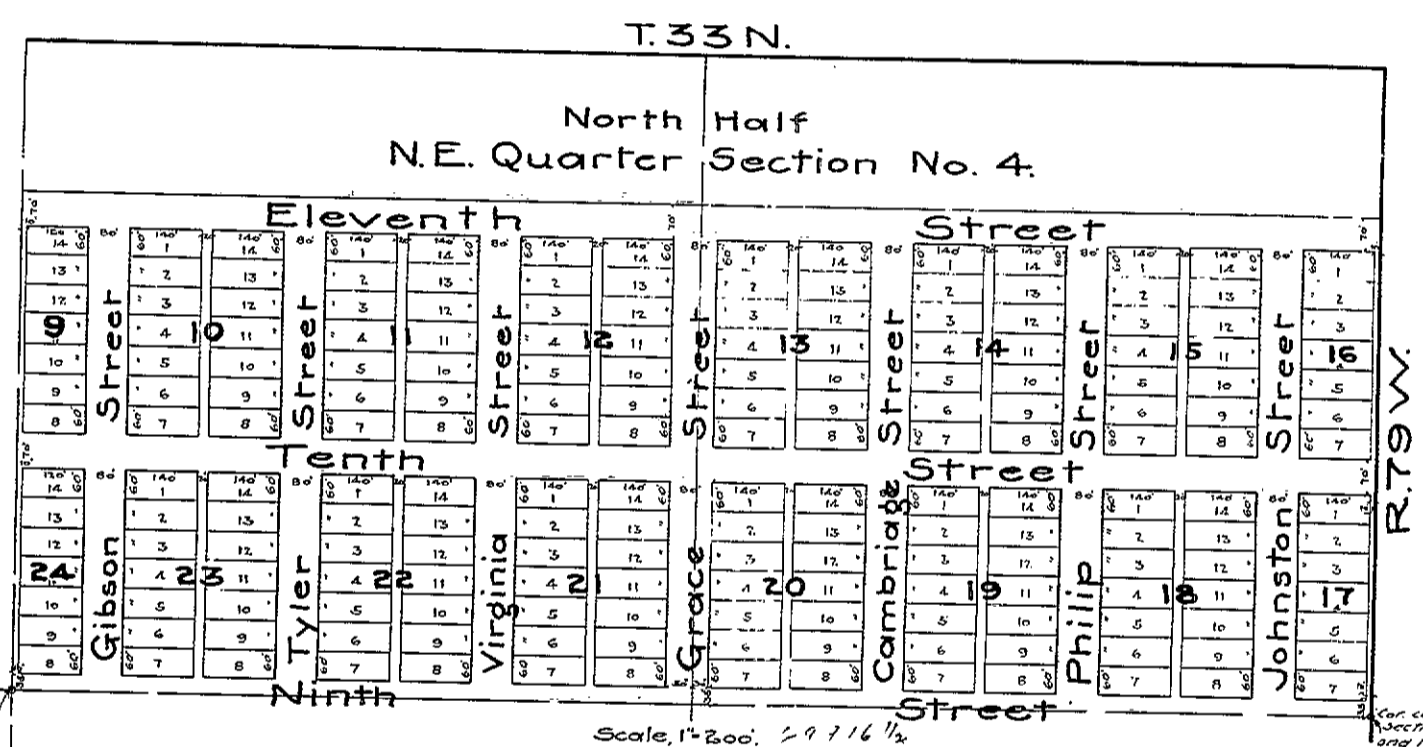


12/280

NELSON'S ADDITION

To The Town of
CASPER, WYO.



STATE OF WYOMING }
COUNTY OF NATRONA } ss.

This is to certify that the subdivisions shown hereon as parts of the NW 1/4 NE 1/4 and NE 1/4 NE 1/4 of Section 4, Township 33 North, Range 79 West of the 6th P.M. and as appears on this map and designated as Blocks 9 to 24 inclusive, to be known as Nelson's Addition, being an addition to the town of Casper, Natrona County, State of Wyoming, is with the free consent and in accordance with the desire of the undersigned owner and proprietor. And all the streets and alleys shown hereon are dedicated to the public use. In witness thereof, George B. Nelson has hereunto set his hand and seal this 22nd day of November, 1913

Seal. *George B. Nelson*

George B. Nelson
Notary Public.

Sworn and subscribed to before me this 22nd day of November 1913.
My commission expires May 22, 1914

Center Sec. 4.

E 1/4 Cor. Sec. 4

I hereby certify that this map was made from the notes of a actual survey made by me on Nov. 13 to 21st, 1913 and that it is correct.

W. D. ...
Civil Engineer

See corner to Sections 3, 4, 5 and 10, 3960's.