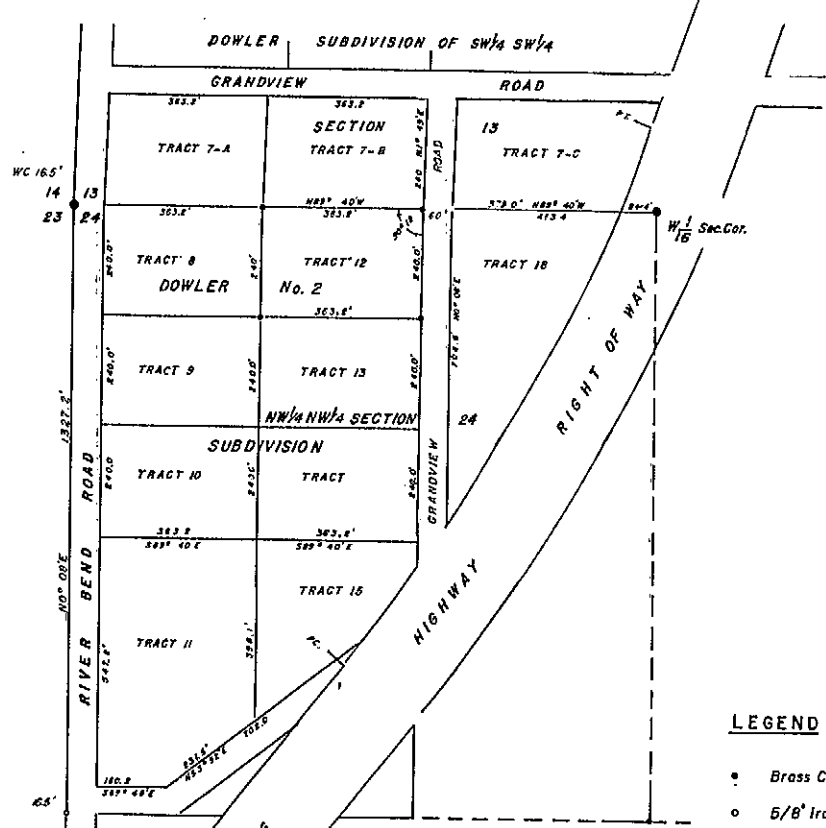


NILSEN SUBDIVISION No. 1
OF
TRACT No. 12 DOWLER SUBDIVISION No. 2
SCALE 1" = 40'



LOCATION MAP
OF
TRACT No. 12 DOWLER SUBDIVISION No. 2
IN NW 1/4 NW 1/4 SECTION 24, T. 33 N., R. 80 W.
SCALE 1" = 200'

LEGEND

- Brass Cap set at Subdivision corner
- 5/8" Iron pin set at lot corner

Elmer H. Johnston, Surveyor
234 West 1st. Street
Casper, Wyoming
Phone 234-4058 Map No. 65-2E-266



MAP AND DEDICATION
of
NILSEN SUBDIVISION

A SUBDIVISION OF TRACT NO. 12
DOWLER NO. 2 SUBDIVISION
A PART OF THE NW 1/4 NW 1/4 SECTION 24
T. 33N., R. 80W., 6th. P.M.
NATRONA COUNTY, WYOMING
SCALE: 1" = 40'

DEDICATION

STATE OF WYOMING, }
County of Natrona } SS

This is to certify that the subdivision shown on the annexed plat of NILSEN SUBDIVISION, a subdivision of Tract No. 12, DOWLER NO. 2 SUBDIVISION; a part of the NW 1/4 NW 1/4 Section 24, T. 33N., R. 79 W., NATRONA COUNTY, WYOMING, and more particularly described as follows: beginning at a point, N. 89° 40' W. a distance of 523.4 feet from the northeast corner NW 1/4 NW 1/4 Section 24, and to the northeast corner Tract No. 12, DOWLER SUBDIVISION; thence S. 00° 06' W. a distance of 240 feet; thence N. 89° 40' W. a distance of 363.2 feet to the southwest corner Tract No. 12, thence N. 00° 08' E. a distance of 240 feet to the northwest corner of Tract No. 12 and north line NW 1/4 NW 1/4 Section 24, thence S. 89° 40' E. a distance of 363.2 feet to the point of beginning; that said NILSEN SUBDIVISION is exactly the same tract as Tract No. 12, DOWLER NO. 2 SUBDIVISION; that said Tract No. 12 is now subdivided into lots designated as Lot No. 1, Lot No. 2, and Lot No. 3; that this NILSEN SUBDIVISION is with the free consent, and in accordance with the desires of the undersigned owners and proprietors; that roads shown upon this map have been dedicated to public use; that the owners and proprietors hereby release and waive all rights under and by virtue of the homestead exemption laws of the State of Wyoming, in the parts thus dedicated to public use.

Claire C. Nilson

Raymond T. Nilson
Raymond T. Nilson

On this 22 day of September, 1965, before me personally appeared Raymond T. Nilson, husband, to me known to be the person described in and who executed the foregoing instrument and acknowledged that he executed the same as his free act and deed including the release and waiver of the right of homestead. My Commission Expires 9-26-66

On this 22 day of September, 1965, before me personally appeared Claire C. Nilson, wife, to me known to be the person described in and who executed the foregoing instrument and acknowledged that she executed the same as her free act and deed including the release and waiver of the right of homestead.

Notary Public

CERTIFICATE OF SURVEYOR

STATE OF WYOMING }
County of Natrona } SS

This is to certify that the Subdivision designated NILSEN SUBDIVISION compares exactly to the same lands as Tract No. 12, DOWLER NO. 2 SUBDIVISION and is a part of NW 1/4 NW 1/4 Section 24, T. 33 N., R. 80 W., 6th. Natrona County, Wyoming; that this survey was made by me on June, 1965, at the request of Raymond T. Nilson and Claire C. Nilson; that this plat shows the subdivision thereof into Lots numbered One, Two, and Three, consecutively; that lot corners are marked as shown in the legend; that all bearings, angles, and distances as shown on this plat are true to the best of my knowledge and belief.

Elmer H. Johnston
Elmer H. Johnston, Surveyor, Reg. No. 144

Subscribed in my presence and sworn to before me on this 22th day of August, 1965.

My Commission expires July 23, 1966

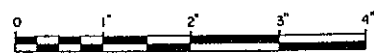
Donald R. ...
Notary Public

This is to certify that I have inspected and approved this plat. Aug. 22, 1965

APPROVED: This ... day of ... 1965, by board of County Commissioners.
ATTEST: ...

MAP OF
NILSEN SUBDIVISION

A SUBDIVISION OF TRACT NO. 12 DOWLER NO. 2 SUBDIVISION
A PART OF THE NW 1/4 NW 1/4 SECTION 24, T. 33 N., R. 80 W., 6th. P.M.
NATRONA COUNTY, WYOMING
SCALE: 1" = 40'



ATLAS REPRODUCTION