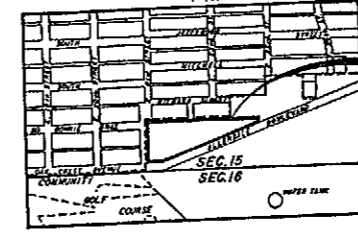


298451

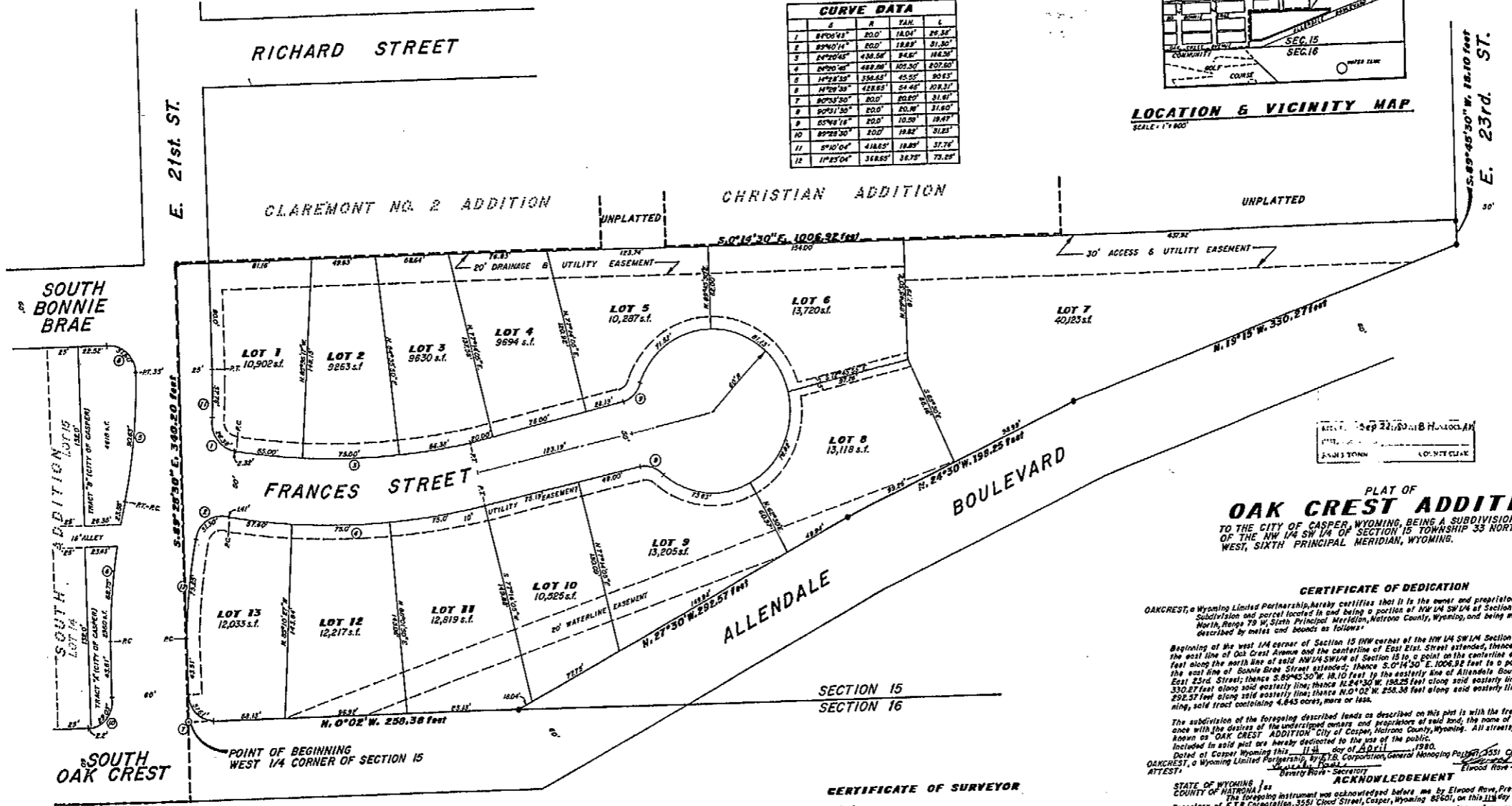
OAK CREST ADDITION 1513  
RECORDED, SEPTEMBER 27, 1980  
INSTRUMENT NO. 298451

CITY PLAT  
SIGNED BY:  
CARTER  
SURVEYOR  
CITY PLANNER  
COMMISSIONER  
CITY ENG.  
COUNTY ENG.  
COUNTY HLTH.  
CO. COM.  
MAYOR  
CITY CLERK  
EXHIBIT "A"

Curve No.	Angle	Radius	Tangent	Chord
1	89°04'14"	20.0'	18.04'	29.56'
2	89°04'14"	20.0'	18.89'	31.26'
3	89°04'14"	20.0'	19.81'	33.14'
4	89°04'14"	20.0'	20.80'	35.20'
5	89°04'14"	20.0'	21.85'	37.44'
6	89°04'14"	20.0'	22.96'	39.86'
7	89°04'14"	20.0'	24.13'	42.46'
8	89°04'14"	20.0'	25.36'	45.24'
9	89°04'14"	20.0'	26.64'	48.20'
10	89°04'14"	20.0'	27.97'	51.34'
11	89°04'14"	20.0'	29.35'	54.66'
12	89°04'14"	20.0'	30.78'	58.16'



LOCATION & VICINITY MAP  
SCALE: 1" = 40'



PLAT OF  
**OAK CREST ADDITION**  
TO THE CITY OF CASPER, WYOMING, BEING A SUBDIVISION OF A PORTION  
OF THE NW 1/4 SW 1/4 OF SECTION 15, TOWNSHIP 33 NORTH, RANGE 79  
WEST, SIXTH PRINCIPAL MERIDIAN, WYOMING.

**CERTIFICATE OF DEDICATION**  
OAKCREST, a Wyoming Limited Partnership, hereby certifies that it is the owner and proprietor of the foregoing Subdivision and parcel located in and being a portion of NW 1/4 SW 1/4 of Section 15, Township 33 North, Range 79 W, Sixth Principal Meridian, Natrona County, Wyoming, and being more particularly described by metes and bounds as follows:  
Beginning at the west 1/4 corner of Section 15 NW corner of the NW 1/4 SW 1/4 of Section 15, said point being on the east line of Oak Crest Avenue and the centerline of East 21st Street; thence S. 89°26'30" E. 340.20 feet along the north line of said NW 1/4 SW 1/4 of Section 15 to a point on the centerline of East 21st Street and the east line of Bonnie Brae Street; thence S. 0°14'30" E. 1006.92 feet to a point on the north line of East 23rd Street; thence S. 89°45'30" W. 18.10 feet to the westerly line of Alleendale Boulevard; thence N. 19°15'18" E. 330.27 feet along said westerly line; thence N. 24°30'50" W. 198.25 feet along said westerly line to the point of beginning; said tract containing 4.843 acres, more or less.  
The subdivision of the foregoing described lands as described on this plat is with the free consent and in accordance with the desires of the undersigned owners and proprietors of said land, the name of said subdivision shall be known as OAK CREST ADDITION City of Casper, Natrona County, Wyoming. All streets, avenues and public ways included in said plat are hereby dedicated to the use of the public.  
Dated at Casper Wyoming this 11th day of April, 1980.  
OAKCREST, a Wyoming Limited Partnership, by T.B. Corporation, General Managing Partner, 3551 Cloud Street, Casper, Wyoming, ATTEST: Beverly Rowe - Secretary

**ACKNOWLEDGEMENT**  
STATE OF WYOMING )  
COUNTY OF NATRONA )  
I, Beverly Rowe, President and Beverly Rowe, Secretary of T.B. Corporation, 3551 Cloud Street, Casper, Wyoming, 82401, on this 11th day of April, 1980, Witness my hand and Notarial seal, My commission expires 11/11/81. CAROL H. HENNING, NOTARY PUBLIC.

**APPROVALS**  
APPROVED: Community Planning Commission of Casper, Wyoming, this 14th day of May, 1980 and forwarded to the City Council of Casper, Wyoming with recommendation that said plat be approved.  
APPROVED: City Council of the City of Casper, Wyoming by Ordinance No. 202-80, this 14th day of May, 1980.  
APPROVED: Board of County Commissioners of Natrona County, Wyoming, by resolution of the Board, this 14th day of May, 1980.  
INSPECTED AND APPROVED on the 24th day of June, 1980.  
INSPECTED AND APPROVED on the 15th day of June, 1980.  
Filed for record in the Office of the County Clerk of Natrona County, Wyoming on this 15th day of June, 1980.

**CERTIFICATE OF SURVEYOR**  
STATE OF WYOMING )  
COUNTY OF NATRONA )  
I, Willis W. Tilton, Land Surveyor of Casper, Wyoming hereby certify that this plat was prepared from notes taken during actual surveys made by me during the month of October, 1979 and said survey is accurately shown hereon. Said plat is true and correct to the best of my knowledge and belief, and all bearings are referred to true meridian and all dimensions are expressed in feet and decimals thereof.  
Wyoming Registration No. 461  
341 EAST E STREET, SUITE 105, CASPER, WYOMING 82401  
Submitted in my presence and sworn to before me this 11th day of April, 1980.  
My Commission expires March 14, 1984. CAROL H. HENNING, NOTARY PUBLIC.

**LEGEND**  
○ 1 1/2" AC. ON 5/8" REBAR  
● LOT CORNER 5/8" REBAR  
PLAT CLOSURE = 1:20,000

