

PLAT OF
P-C ADDITION
TO THE CITY OF CASPER
A SUBDIVISION OF PART OF
THE SW 1/4 NW 1/4, SECTION 17
T.33N., R.79W. OF THE 6TH PRINCIPAL MERIDIAN
NATRONA COUNTY, WYOMING
Scale: 1" = 80'



CERTIFICATE OF DEDICATION

The undersigned M. J. Choquette and Mary O. Choquette, his wife and wife hereby jointly and severally certify that the foregoing plat is a true and correct copy of the original plat as shown to the undersigned by the City of Casper, Wyoming and being more particularly described as follows: ...

ACKNOWLEDGEMENT

STATE OF WYOMING
County of Natrona

On this 22nd day of Dec., 1964, before me personally appeared M.J. Choquette and Mary O. Choquette, husband and wife, to me known to be the persons described in and who executed the foregoing instrument and acknowledged that they executed the same as their respective free acts and deeds.

PLAT APPROVED

APPROVED by the Community Planning Commission of Casper, Wyoming this 10th day of May 1964 and forwarded to the City Council of Casper, Wyoming with recommendation that said plat be approved.
Chairman William F. Shultz Secretary

APPROVED by the City Council of Casper, Wyoming by Resolution (Ordinance) No. 1506-A duly passed, adopted, and approved on the 16th day of May, 1966.

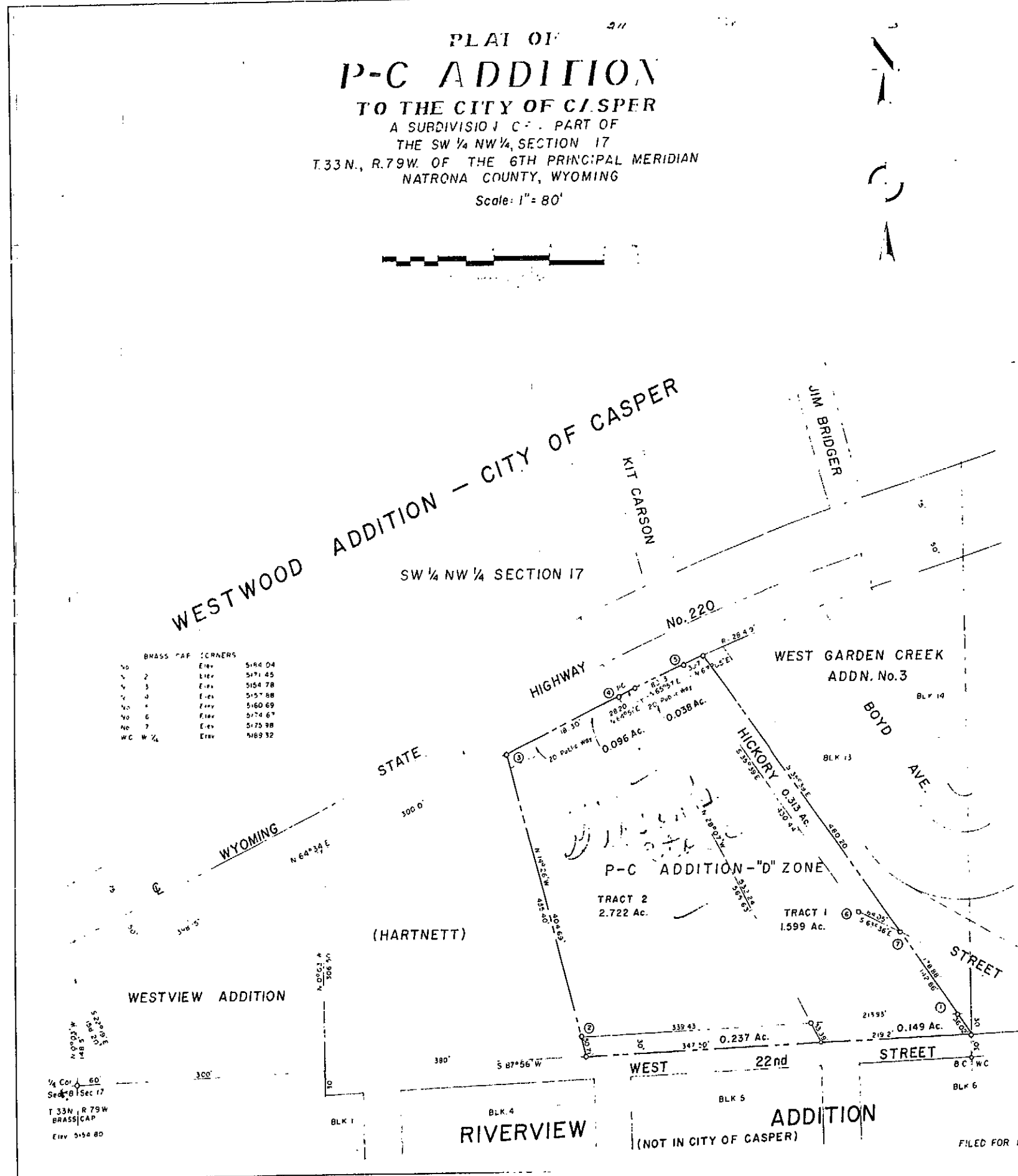
APPROVED by the Board of County Commissioners of Natrona County, Wyoming by Resolution duly passed on the 11th day of May 1966.

CERTIFICATE OF SURVEYOR

STATE OF WYOMING
County of Natrona

I, E. C. LEHART, Professional Engineer and Land Surveyor, Casper, Wyoming, hereby certify that this plat was prepared from notes taken during an actual survey made by me on the 8th day of January, 1964, and that the foregoing certificate and plat correctly and accurately represent said survey and P-C ADDITION to the CITY OF CASPER, NATRONA COUNTY, WYOMING. Said plat and survey are in conformance with Ordinance No. 1366-A, City of Casper, March 19, 1962, all dimensions are expressed in feet and decimals thereof and bearings referred to the true Meridian by direct solar observation.

| NO. | BRASS CAP CORNERS | Elev. | 5184.04 |
|-----|-------------------|---------|---------|
| 1 | Elev. | 5171.45 | |
| 2 | Elev. | 5154.78 | |
| 3 | Elev. | 5157.88 | |
| 4 | Elev. | 5160.69 | |
| 5 | Elev. | 5174.67 | |
| 6 | Elev. | 5175.98 | |
| 7 | Elev. | 5189.32 | |



FILED FOR RECORD in the Office of the County Clerk of Natrona County, Wyoming this 11th day of May 1964