

Pineview Meadows Subdivision No. 1  
Addition No. 5  
Instrument # 786485  
Recorded March 7, 2008

LEGAL DESCRIPTION

A PORTION OF LAND BEING A PORTION OF COMMERCIAL AREA 1A, ADDITION NO. TWO OF THE PINEVIEW MEADOWS SUBDIVISION NO. 1 AND THE NW/4 CORNER OF SECTION 11, T. 33N., R. 79W., S. 75E., CITY OF CASPER, WYOMING, BEING MORE PARTICULARLY DESCRIBED AS FOLLOWS:  
COMMENCING AT THE NORTHEAST CORNER OF THE PARCEL MONUMENTED BY A BRASS CAP AND BEING THE POINT OF BEGINNING OF THIS DESCRIPTION;  
THENCE S00°37'00"E, A DISTANCE OF 320.09 FEET TO THE SOUTHEAST CORNER OF THE PARCEL MONUMENTED BY A BRASS CAP;  
THENCE IN A WESTLY DIRECTION, ALONG A CURVE TO THE RIGHT, HAVING A RADIUS OF 571.01 FEET, THROUGH A CENTRAL ANGLE OF 120.00°, TO THE POINT MONUMENTED BY A BRASS CAP;  
THENCE N89°48'02"W, A DISTANCE OF 132.52 FEET TO A POINT MONUMENTED BY A BRASS CAP;  
THENCE S00°36'00"W, A DISTANCE OF 20.04 FEET TO A POINT MONUMENTED BY A BRASS CAP;  
THENCE S89°17'48"E, ALONG THE EAST LINE OF COUNTRY CLUB ROAD, A DISTANCE OF 47.26 FEET TO A POINT MONUMENTED BY A BRASS CAP;  
THENCE N89°59'04"E, ALONG THE SOUTH LINE OF THE TEACOD TRACT, A DISTANCE OF 128.17 FEET, TO A POINT MONUMENTED BY A CHISELED "X" IN THE TOP OF A WELDED IRON PIPE;  
THENCE N00°32'46"W, ALONG THE EAST LINE OF THE TEACOD TRACT, A DISTANCE OF 155.05 FEET, TO A POINT MONUMENTED BY A NAIL SET IN THE BASE OF A LIGHT POLE;  
THENCE N89°51'03"W, ALONG THE NORTH LINE OF THE TEACOD TRACT, A DISTANCE OF 110.09 FEET, TO A POINT MONUMENTED BY A BRASS CAP, AND LOCATED ON THE EAST LINE OF COUNTRY CLUB ROAD;  
THENCE N00°33'19"W, ALONG THE EAST LINE OF COUNTRY CLUB ROAD, A DISTANCE OF 148.19 FEET TO A POINT MONUMENTED BY A BRASS CAP;  
THENCE N00°29'25"W, ALONG THE EAST LINE OF COUNTRY CLUB ROAD, A DISTANCE OF 249.80 FEET TO A POINT MONUMENTED BY A BRASS CAP;  
THENCE S89°17'48"E, ALONG THE SOUTH LINE OF THE TEACOD TRACT, A DISTANCE OF 128.17 FEET TO A POINT MONUMENTED BY A BRASS CAP;  
THENCE N89°51'03"W, A DISTANCE OF 110.09 FEET TO A POINT MONUMENTED BY A BRASS CAP AND BEING THE NORTHEAST CORNER OF THE BRASS SHOP TRACT AND LOCATED ON THE SOUTH LINE OF EAST SECOND STREET;  
THENCE N89°43'48"E, ALONG THE SOUTH LINE OF EAST SECOND STREET, A DISTANCE OF 19.88 FEET TO THE NORTHEAST CORNER OF THE GODFATHER'S PIZZA TRACT, MONUMENTED BY A BRASS CAP;  
THENCE S00°39'37"E, ALONG THE WEST LINE OF THE GODFATHER'S PIZZA TRACT, A DISTANCE OF 158.88 FEET TO THE SOUTHWEST CORNER OF THE GODFATHER'S PIZZA TRACT, MONUMENTED BY A BRASS CAP;  
THENCE N89°53'27"E, ALONG THE SOUTH LINE OF THE GODFATHER'S PIZZA TRACT, A DISTANCE OF 140.02 FEET TO THE SOUTHEAST CORNER OF THE GODFATHER'S PIZZA TRACT, A DISTANCE OF 180.01 FEET TO A POINT MONUMENTED BY A BRASS CAP;  
THENCE N00°00'00"W, ALONG THE EAST LINE OF THE GODFATHER'S PIZZA TRACT, A DISTANCE OF 180.01 FEET TO A POINT MONUMENTED BY A BRASS CAP;  
THENCE N89°50'27"E, ALONG THE SOUTH LINE OF EAST SECOND STREET, A DISTANCE OF 48.38 FEET TO A POINT MONUMENTED BY A BRASS CAP;  
THENCE S00°39'08"E, A DISTANCE OF 14.00 FEET TO A POINT MONUMENTED BY A BRASS CAP;  
THENCE N89°13'57"E, ALONG THE SOUTH LINE OF EAST SECOND STREET, A DISTANCE OF 37.00 FEET TO THE NORTHEAST CORNER OF THE PARCEL, ALSO BEING THE NORTHWEST CORNER OF THE FOX BROTHERS ADDITION, MONUMENTED BY A BRASS CAP;  
THENCE S00°14'30"E, ALONG THE WEST LINE OF THE FOX BROTHERS ADDITION, A DISTANCE OF 310.98 FEET TO A POINT BEING THE SOUTHWEST CORNER OF THE FOX BROTHERS ADDITION, MONUMENTED BY A BRASS CAP;  
THENCE N89°21'38"E, ALONG THE SOUTH LINE OF THE FOX BROTHERS ADDITION, A DISTANCE OF 172.09 FEET TO A POINT MONUMENTED BY A BRASS CAP;  
THENCE S00°32'11"E, A DISTANCE OF 49.99 FEET TO A POINT MONUMENTED BY A BRASS CAP;  
THENCE N89°22'44"E, ALONG THE SOUTH LINE OF THE FOX BROTHERS ADDITION, A DISTANCE OF 82.89 FEET TO THE POINT OF BEGINNING.  
THE ABOVE DESCRIBED PARCEL CONTAINS 7.96 ACRES, MORE OR LESS, (348,302.51 S.F.) AND IS SUBJECT TO ANY RIGHTS-OF-WAY AND/OR EASEMENTS, RESERVATIONS AND ENCUMBRANCES WHICH HAVE BEEN LEGALLY ACQUIRED.

THE TRACT OF LAND AS IT APPEARS ON THIS PLAN IS DEDICATED, WITH THE FREE CONSENT AND IN THE PRESENCE OF ALL THE OWNERS AND PROPRIETORS, TO THE CITY OF CASPER, WYOMING, FOR THE USE AND ENJOYMENT OF THE PUBLIC AS A CITY PARK AND THE OWNERS HEREBY WAIVE ANY CLAIM TO THE TRACT OF LAND AS SHOWN ON THIS PLAN, AND THE CITY OF CASPER, WYOMING, SHALL MAINTAIN COMBUSTIBLE LINES, WIRES AND PIPES, ANY OR ALL OF THEM, UNDER AND ALONG THE STRIPS OF LAND MARKED UTILITIES EASEMENT AS SHOWN ON THIS PLAN. ALL ROADS AND STREETS AS SHOWN HEREON HAVE BEEN PREVIOUSLY DEDICATED TO THE USE OF THE PUBLIC.

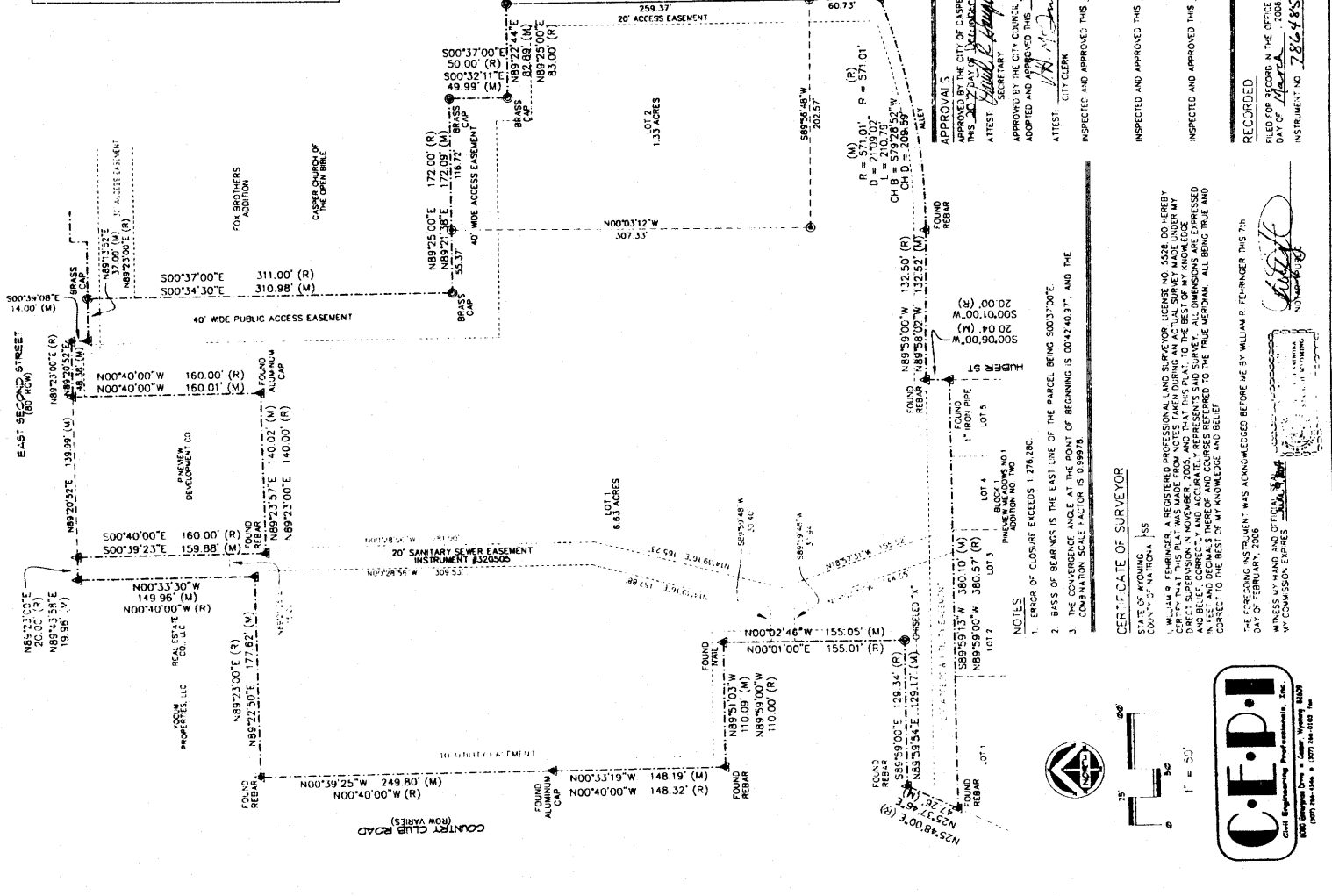
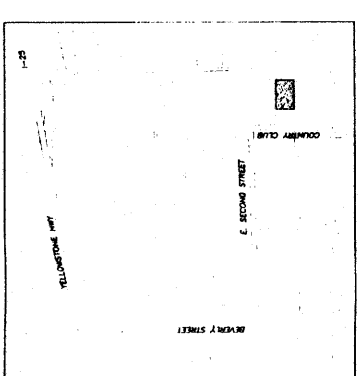
TWO-CITY LTD.  
400 PARK AVENUE, STE. 1530  
NEW YORK, NEW YORK 10022  
JAY LANGSAM - PRESIDENT  
CART MORN OVERMANN, JR.  
Notary Public, State of New York  
Qualified in New York County  
Commission Expires Dec. 31, 2008

THE FOREGOING INSTRUMENT WAS ACKNOWLEDGED BEFORE ME BY JAY LANGSAM - PRESIDENT, TWO-CITY LTD., AND CART MORN OVERMANN, JR., NOTARY PUBLIC, WITNESS MY HAND AND OFFICIAL SEAL, AT THE CITY OF CASPER, WYOMING, ON THIS 11th DAY OF FEBRUARY, 2008.

REPLAT OF  
A PORTION OF COMMERCIAL AREA 1A, ADDITION NO. TWO, PINEVIEW MEADOWS SUBDIVISION NO. 1  
AND A PORTION OF COMMERCIAL AREA 2A, ADDITION NO. THREE, PINEVIEW MEADOWS SUBDIVISION NO. 1

PINEVIEW MEADOWS SUBDIVISION NO. 1  
ADDITION NO. FIVE

TO THE CITY OF CASPER, WYOMING  
BEING A PORTION OF THE  
NE/4 CORNER AND THE NW/4 CORNER  
OF SECTION 11, T. 33N., R. 79W., S. 75E.  
NATRONA COUNTY WYOMING



- ▲ SET BRASS CAP
- SET MONUMENT 5/8" REBAR
- ALUMINUM CAP
- FOUND MONUMENT AS NOTED

APPROVALS  
APPROVED BY THE CITY COUNCIL OF CASPER, WYOMING BY RESOLUTION NO. 04-311, DULY PASSED, ADOPTED AND APPROVED THIS 11th DAY OF FEBRUARY, 2008.  
ATTEST: *[Signature]* SECRETARY  
ATTEST: *[Signature]* CITY CLERK

INSPECTED AND APPROVED THIS 15th DAY OF FEBRUARY, 2008  
INSPECTED AND APPROVED THIS 15th DAY OF FEBRUARY, 2008  
INSPECTED AND APPROVED THIS 11th DAY OF FEBRUARY, 2008  
RECORDED  
FILED FOR RECORD IN THE OFFICE OF THE COUNTY CLERK OF NATRONA COUNTY, WYOMING THIS 22nd DAY OF FEBRUARY, 2008  
INSTRUMENT NO. 786485

