

Pocket 10
Folder 4

244/405

PLAT OF
POPISH ADDITION
TO THE CITY OF CASPER, WYOMING
A SUBDIVISION BEING PORTIONS OF
THE NE 1/4, SE 1/4, SECTION 18
T.33N., R.79W. of THE 6th P.M., WYOMING
NATRONA COUNTY

CERTIFICATE OF DEDICATION

I, JOHN R. POPISH, an individual, hereby certify that I am the owner of the foregoing subdivision of portions of the NE 1/4, SE 1/4 of Section 18, T. 33 N., R. 79 W. of the 6th Principal Meridian, Wyoming, Natrona County and that this plat is in accordance with the desire and with the free consent of myself, the undersigned owner and proprietor of said lands which more particularly described by metes and bounds as follows:
Beginning at the most westerly corner, No. 1 of said parcel, which point and corner is located at N 24° 02' E, 1159.9 feet from the SE 1/4 corner of said section 18; Thence from said point of beginning and along the northerly boundary of said parcel, N 64° 37' E, 180.0 feet to an angle point, corner No. 2; Thence South 25° 23' E, 140.75 feet to a point, corner No. 3; Thence S 64° 37' E, 180.0 feet to an angle point, corner No. 4; Thence S 25° 23' E, 20.0 feet to an angle point, corner No. 5; Thence N 64° 37' E, 120.0 feet to an angle point, corner No. 6; Thence S 25° 23' E, 140.0 feet to an angle point, corner No. 7; Thence S 64° 37' E, 120.0 feet to an angle point, corner No. 8; Thence N 25° 23' W, 140.0 feet to a point closing with corner No. 5; Thence continuing on bearing N 25° 23' W, 20.0 feet to a point closing with corner No. 4; Thence continuing on bearing N 25° 23' W, 140.75 feet to the point of beginning closing at Corner No. 1, containing 0.967 acres, more or less.
And that the name of said subdivision shall be known as POPISH ADDITION, To the City of Casper, Wyoming and that the area set out for streets and alleys are hereby dedicated to the use of the public; and the undersigned owner and proprietor of said lands hereby waives and relinquishes all rights he may have to the platted lands by virtue of the exemption laws of the State of Wyoming.

Dated at Casper, Wyoming this 18th day of November, 1965.
John R. Popish, An Individual

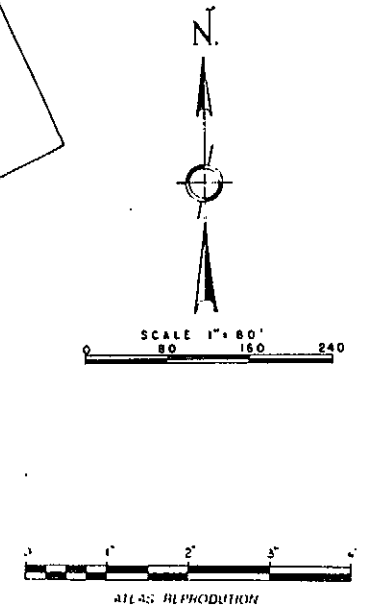
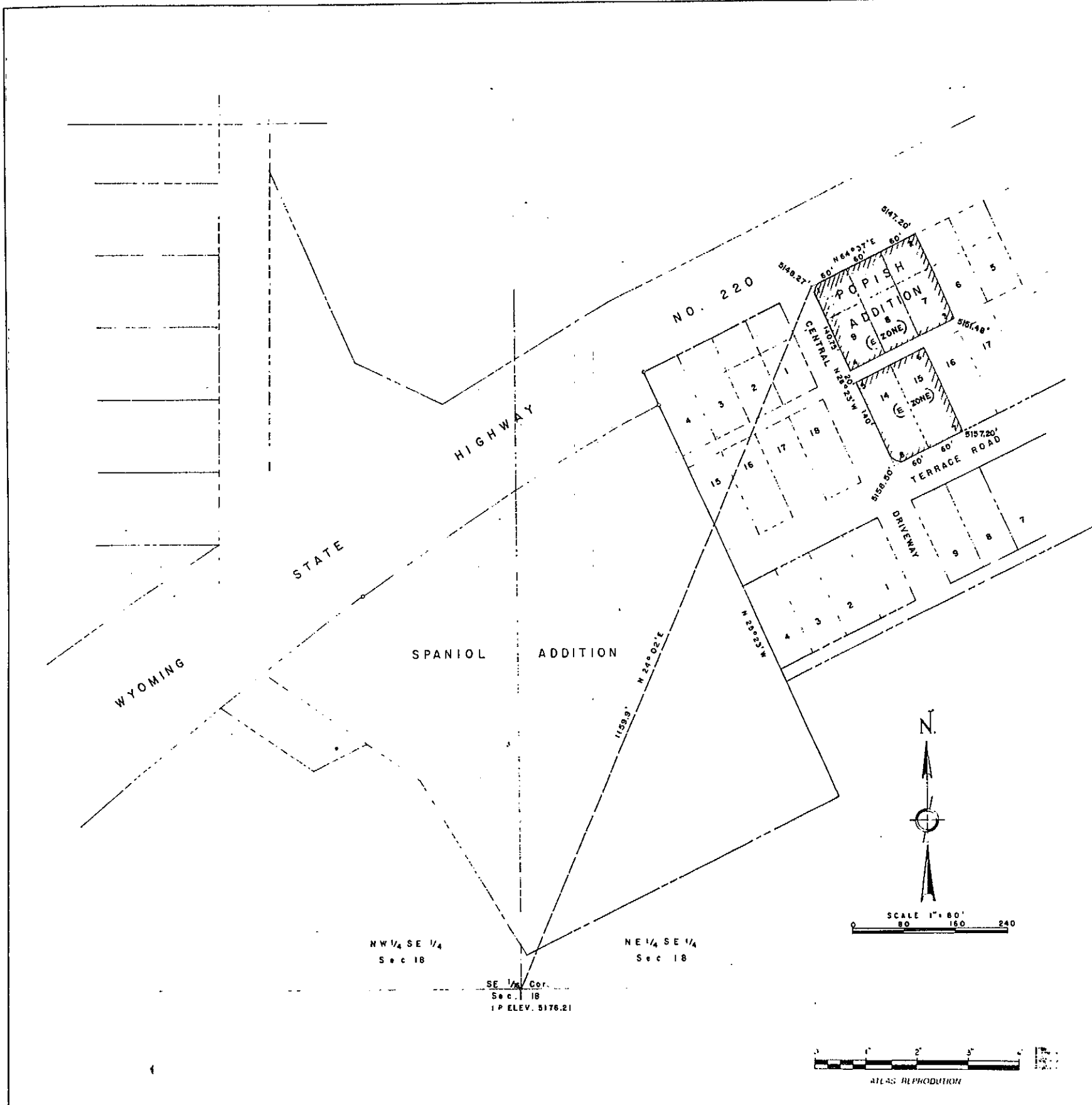
STATE OF WYOMING
COUNTY OF NATRONA
On this 18th day of November, 1965 before me personally appeared JOHN R. POPISH, to me known to be the person described and who executed the foregoing instrument, and acknowledged that he executed the same as his free act and deed.
Given under my hand and notarial seal, the day and year first above written.
My Commission expires: _____
Notary Public

CERTIFICATE OF SURVEYOR

I, W. W. Butler, of Casper, Wyoming, do hereby certify that this plat was prepared from notes taken during actual surveys made by me during the month of October, 1965 and that such plat correctly represents such surveys and the POPISH ADDITION to the City of Casper, Natrona County, Wyoming; all dimensions are expressed in feet and decimals thereof and all courses referred to the true meridian; such surveys are represented hereon are correct to the best of my knowledge and belief and in conformance with Ordinance No. 1466 A, City of Casper, Wyoming.
My Commission expires: _____
W. W. Butler
Surveyor

PLAT APPROVED

This plat was by the City of Casper, Wyoming and forwarded to the City Council of Casper, Wyoming on the 18th day of November, 1965, with recommendation that said plat be approved.
Thomas P. Buehler
Mayor
Robert T. DeLorenzo
City Engineer
Inspected and approved on the 18th day of December, 1965.
George R. Hughes
County Surveyor
Board of County Commissioners, Natrona County, Wyoming, by Resolution duly passed on the 12th day of December, 1965.
Chairman of the Board
Attest:
Inspected and approved on the 9th day of December, 1965.
County Clerk



NW 1/4 SE 1/4
Sec 18
SE 1/4 Cor.
Sec 18
I.P. ELEV. 5176.21
NE 1/4 SE 1/4
Sec 18