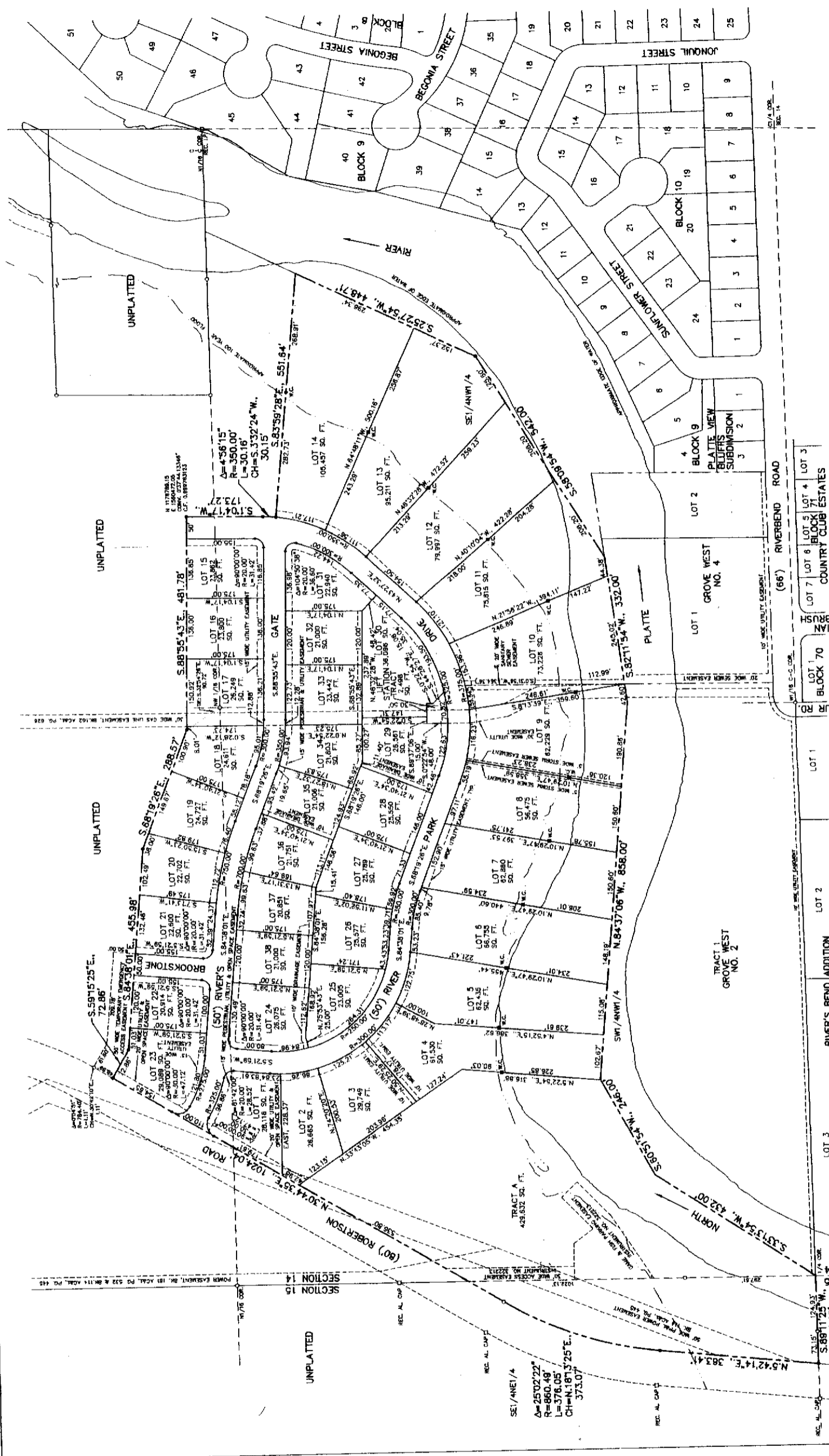


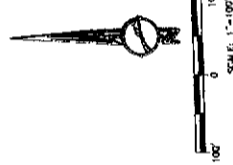


PLAT OF  
**"RIVER PARK"**  
 A SUBDIVISION OF PORTIONS OF  
 THE SE1/4NE1/4, SECTION 15 AND NW1/4, SECTION 14  
 TOWNSHIP 33 NORTH, RANGE 80 WEST  
 SIXTH PRINCIPAL MERIDIAN  
 NATRONA COUNTY, WYOMING

SCALE: 1"=100'  
 PAGE 2 OF 2



- LEGEND**
- RECOVERED BRASS CAP CORNER
  - RECOVERED CORNER (AS NOTED)
  - SET BRASS CAP
  - SET 5/8" REBAR W/AL CAP
  - WITNESS CORNER
  - SUBDIVISION BOUNDARY
  - EASEMENT
  - APPROXIMATE 100 YEAR FLOOD LINE (BASED ON ELEVATION)
  - MEASURED BEARING & DISTANCE



PLAT CLOSURE RATIO: EXCEEDS 1:100,000

DATUM: GROUND DISTANCE - U.S. FOOT  
 BASIS OF BEARING - GEODETIC BASED ON GPS  
 COORDINATES REFER TO CITY OF CASPER GIS DATUM  
 WYOMING STATE PLANE COORDINATES, EAST CENTRAL  
 ZONE, NAD83/86.

T. JIN, R. BOW.

SECTION 14  
 SECTION 15

WLS  
 SURVEYING & PLANNING  
 200 PROSPECTOR, CASPER, WY. 82401  
 WY. REG. NO. 12851, 12852, 12853, 12854, 12855, 12856, 12857, 12858, 12859, 12860, 12861, 12862, 12863, 12864, 12865, 12866, 12867, 12868, 12869, 12870, 12871, 12872, 12873, 12874, 12875, 12876, 12877, 12878, 12879, 12880, 12881, 12882, 12883, 12884, 12885, 12886, 12887, 12888, 12889, 12890, 12891, 12892, 12893, 12894, 12895, 12896, 12897, 12898, 12899, 12900, 12901, 12902, 12903, 12904, 12905, 12906, 12907, 12908, 12909, 12910, 12911, 12912, 12913, 12914, 12915, 12916, 12917, 12918, 12919, 12920, 12921, 12922, 12923, 12924, 12925, 12926, 12927, 12928, 12929, 12930, 12931, 12932, 12933, 12934, 12935, 12936, 12937, 12938, 12939, 12940, 12941, 12942, 12943, 12944, 12945, 12946, 12947, 12948, 12949, 12950, 12951, 12952, 12953, 12954, 12955, 12956, 12957, 12958, 12959, 12960, 12961, 12962, 12963, 12964, 12965, 12966, 12967, 12968, 12969, 12970, 12971, 12972, 12973, 12974, 12975, 12976, 12977, 12978, 12979, 12980, 12981, 12982, 12983, 12984, 12985, 12986, 12987, 12988, 12989, 12990, 12991, 12992, 12993, 12994, 12995, 12996, 12997, 12998, 12999, 13000