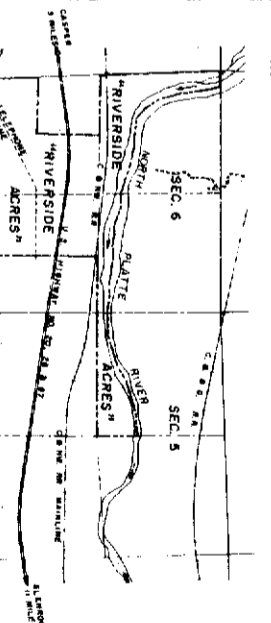


CERTIFICATE OF SURVEYOR

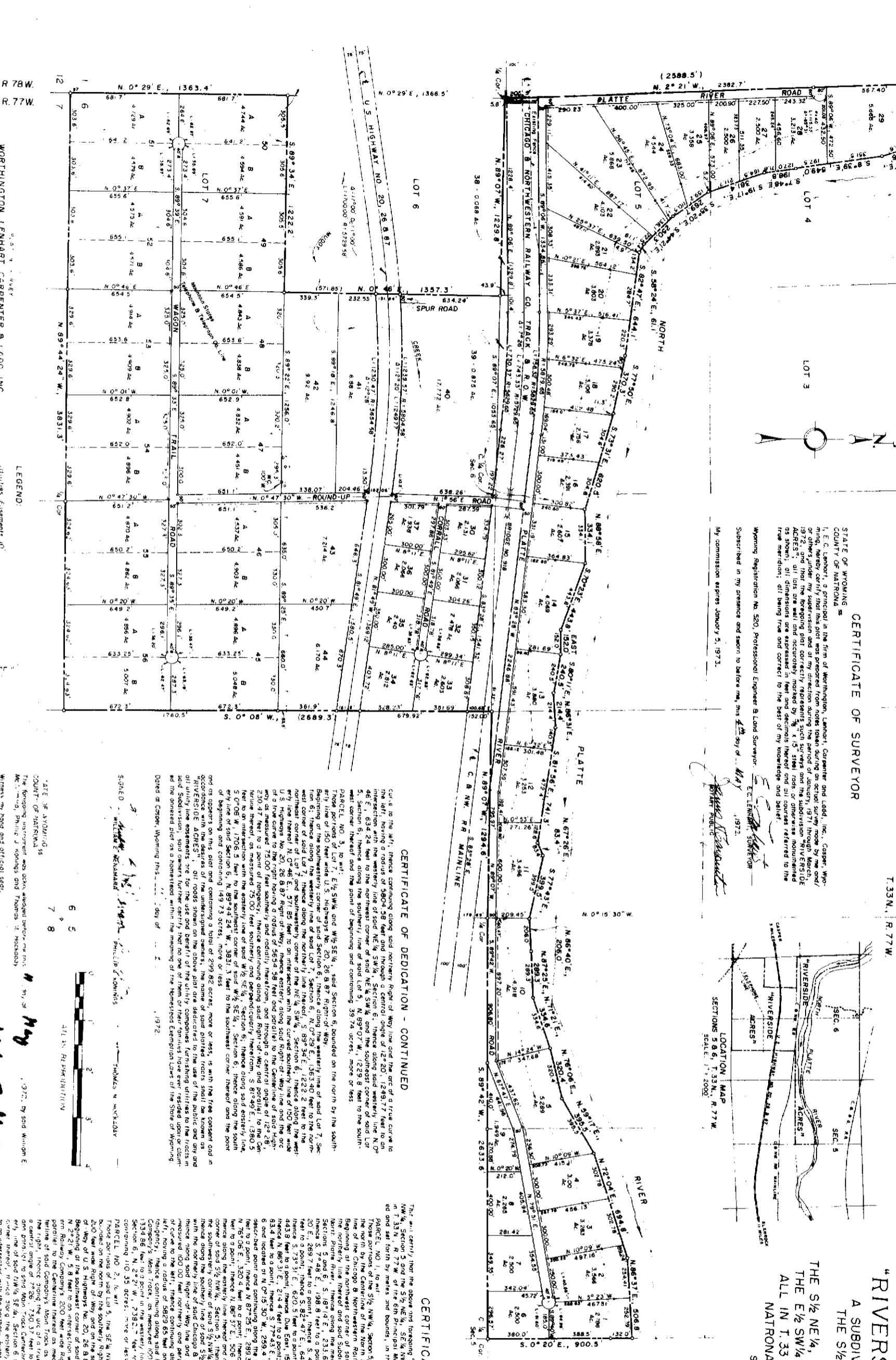
STATE OF WYOMING
COUNTY OF NATRONA
I, E. C. Lennhart, a principal in the firm of Worthington, Lennhart, Carpenter and Ladd, Inc., Casper, Wyoming, hereby certify that this plat was prepared from notes taken during an actual survey made by me and/or others under my supervision and at my direction during the period of January, 1971 through March, 1972, and that the foregoing plat correctly represents such surveys and the subdivision 'RIVERSIDE ACRES', all lots are well and accurately marked by 1/4 x 1/4 steel rods of the otherwise mentioned dimensions, all dimensions are expressed in feet and decimals thereof and all courses referred to in the plat are true and correct to the best of my knowledge and belief.

My commission expires January 5, 1973.
Subscribed in my presence and sworn to before me, this 5th day of May, 1972.
E. C. Lennhart, Surveyor
Worthington, Lennhart, Carpenter and Ladd, Inc.
Casper, Wyoming



PLAT APPROVED
BOARD OF COUNTY COMMISSIONERS, Natrona County, Wyoming, by Resolution duly passed on the 12th day of May, 1972.

PLAT OF
"RIVERSIDE ACRES"
A SUBDIVISION OF PARTS OF
THE 1/2 NE 1/4, SE 1/4 NW 1/4, LOTS 4, 5, 6, 7,
THE E 1/2 SW 1/4 & W 1/2 SE 1/4, SECTION 6
ALL IN T. 33N., R. 77W. of the 6th P.M.
NATRONA COUNTY, WYOMING
SCALE: 1" = 300'



CERTIFICATE OF DEDICATION - CONTINUED

There continues along said northern right-of-way line and the arc of a true curve to the left, having a radius of 5804.58 feet and through a central angle of 12° 50' 12.49" 77 feet to an intersection with the westerly line of said NE 1/4 SW 1/4, Section 6, thence along said westerly line N. 0° 45' E., 634.24 feet to the northeast corner of said Lot 5, N. 89° 07' W., 1229.8 feet to the southwest corner thereof and the point of beginning and containing 35.74 acres, more or less.

CERTIFICATE OF DEDICATION

The plat certifies that the above and foregoing 'RIVERSIDE ACRES' a subdivision comprising parts of the 1/2 NE 1/4, SE 1/4 NW 1/4, LOTS 4, 5, 6, 7, THE E 1/2 SW 1/4 & W 1/2 SE 1/4, SECTION 6, all in T. 33N., R. 77W. of the 6th P.M. principal Meridian, Natrona County, Wyoming, being more particularly described and set forth by metes and bounds, in three parcels, as follows:
PARCEL NO. 1, to wit:
Those portions of the 1/2 NE 1/4, Section 5, Lots 4, 5, 6, 7, NE 1/4, SE 1/4 NW 1/4, Section 6, bounded on the north by the Centerline of the North Platte River and on the south by the northern right-of-way line of the Chicago & Northwestern Railway Company's 200-foot Right-of-Way.

WORTHINGTON, LENNHART, CARPENTER & LADD, INC.
632 SOUTH DAVID STREET, CASPER, WYOMING
Phone No. R. 14 B. 1.
Permit No. 31866
LEGEND:
A. Alluvial Estimation of
Point on or with Dimensions
W. Commission Expires
W. 5-10-1974
W. S. H.
MAY 1972
By said Worthington, Lennhart, Carpenter and Ladd, Inc.
Witness my hand and official seal
E. C. Lennhart, Surveyor
NATRONA COUNTY, WYOMING