

# FINAL PLAT OF ROBERTSON HILLS TO THE TOWN OF MILLS

A VACATION AND REPLAT OF TRACTS 1 AND 4 OF THE ANNEXATION PLAT OF RIVER HEIGHTS ACRES, LOCATED IN THE SOUTHWEST QUARTER (SW¼) AND THE SOUTH HALF OF THE NORTHWEST QUARTER (S½NW¼) OF SECTION 11, T. 33N., R. 80W. OF THE 6th PRINCIPAL, MERIDIAN, NATRONA COUNTY, WYOMING

**CERTIFICATE OF DEDICATION**

THE UNDERSIGNED ROBERTSON HILLS DEVELOPMENT, LLC, HEREBY CERTIFIES THAT THEY ARE THE OWNER AND PROPRIETOR OF THE FOREGOING "ROBERTSON HILLS" A VACATION AND REPLAT OF TRACTS 1 AND 4 OF THE ANNEXATION PLAT OF RIVER HEIGHTS ACRES, LOCATED IN THE SOUTHWEST QUARTER (SW¼) AND THE SOUTH HALF OF THE NORTHWEST QUARTER (S½NW¼) OF SECTION 11, T. 33N., R. 80W. OF THE 6th PRINCIPAL, MERIDIAN, NATRONA COUNTY, WYOMING, SAID TRACT BEING MORE PARTICULARLY DESCRIBED AS FOLLOWS:

BEGINNING AT THE SOUTH QUARTER CORNER OF SECTION 11, T. 33N., R. 80W., MONUMENTED WITH A 3" BRASS CAP, SAID POINT BEING THE TRUE POINT OF BEGINNING, S 89° 10' 17" W., 1917.24 FEET TO A POINT, THENCE S 89° 14' 17" W., 623.08 FEET TO A POINT, THENCE N 17° 55' 55" E., 118.64 FEET TO THE BEGINNING OF CURVE, SAID CURVE TURNING TO THE RIGHT THROUGH AN ANGLE OF 27° 16' 59", HAVING A RADIUS OF 675.82 FEET, AND WHOSE LONG CHORD BEARS N 20° 02' 21" E., 281.27 FEET, THENCE S 11° 59' 27" W., 34.78 FEET TO THE BEGINNING OF ANOTHER ANGLE, SAID CURVE TURNING TO THE RIGHT THROUGH AN ANGLE OF 175° 50' 00", HAVING A RADIUS OF 348.09 FEET, AND WHOSE LONG CHORD BEARS S 02° 00' 00" W., 124.42 FEET TO A POINT OF INTERSECTION WITH AN ANTI-MERIDIAN LINE, N 80° 19' 01" W., 111.92 FEET TO A POINT, THENCE N 80° 19' 01" W., 100.00 FEET TO A POINT, THENCE N 80° 19' 01" W., 100.00 FEET TO A POINT, THENCE N 80° 19' 01" W., 297.77 FEET TO A POINT, THENCE N 11° 42' 29" W., 20.28 FEET TO THE BEGINNING OF A CURVE, SAID CURVE TURNING TO THE RIGHT THROUGH AN ANGLE OF 15° 15' 43", HAVING A RADIUS OF 865.17 FEET, AND WHOSE LONG CHORD BEARS N 01° 13' 27" W., 224.37 FEET TO A POINT, THENCE N 81° 27' 52" E., 59.91 FEET TO A POINT, THENCE S 81° 27' 52" E., 59.91 FEET TO A POINT, THENCE S 81° 27' 52" E., 59.91 FEET TO A POINT, THENCE N 81° 27' 52" E., 132.37 FEET TO A POINT, THENCE S 02° 00' 00" W., 88.72 FEET TO A POINT, THENCE S 02° 00' 00" W., 124.59 FEET TO THE POINT OF BEGINNING, SAID TRACT CONTAINING 19.81 ACRES MORE OR LESS.

AS APPEARS ON THIS PLAT, IS WITH FREE CONSENT, AND IN ACCORDANCE WITH THE DESIRES OF THE UNDERSIGNED OWNERS, PROPRIETORS OR PARTIES OF INTEREST HAVE BY THESE PRESENTS LAD OUT AND GAVEN AS ROBERTSON HILLS TO THE TOWN OF MILLS, WYOMING, THE UNDERSIGNED SURVEYORS, MATTHEW J. GIBSON, JAMES M. GIBSON, AND GUY W. GIBSON, ALL OF NATRONA COUNTY, WYOMING, REGISTERED PROFESSIONAL SURVEYORS, THE PURPOSES OF INSTALLING PERMANENT, PUBLIC, REPLACING AND MAINTAINING STAKE MARKS, WATER LINES, GAS LINES, ELECTRIC LINES, TELEPHONE LINES, GULCHES, TREE PLANTINGS AND OTHER UTILITIES AND TYPES OF PUBLIC UTILITIES NOT OTHERWISE SPECIFICALLY OUTLINED BY THE PUBLIC.

EXECUTED THIS 24<sup>th</sup> DAY OF JULY, 2015.

BY: USA BURDICK, MEMBER OF ROBERTSON HILLS DEVELOPMENTS, LLC  
 STATE OF WYOMING } 88  
 COUNTY OF NATRONA )

THIS FOREGOING INSTRUMENT WAS ACKNOWLEDGED BEFORE ME THIS 24<sup>th</sup> DAY OF JULY, 2015, BY USA BURDICK, MEMBER OF ROBERTSON HILLS DEVELOPMENTS, LLC  
 WITNESS MY HAND AND OFFICIAL SEAL.



BY: KEITH TYLER, MEMBER OF FT INVESTMENTS, LLC  
 STATE OF WYOMING } 88  
 COUNTY OF NATRONA )

THIS FOREGOING INSTRUMENT WAS ACKNOWLEDGED BEFORE ME THIS 24<sup>th</sup> DAY OF JULY, 2015, BY KEITH TYLER, MEMBER OF FT INVESTMENTS, LLC  
 WITNESS MY HAND AND OFFICIAL SEAL.



**LEGEND**

- PROPERTY LINE (PROPOSED)
- PROPERTY LINE (ADJACENT AND EXISTING)
- PROPOSED EASEMENT LINE
- EXISTING EASEMENT LINE
- SECTION LINE
- QUARTER-SECTION LINE
- SIXTEEN-TH SECTION
- RECOVERED BRASS CAP (AS NOTED)
- SET BRASS CAP (E.C.S. 548)
- RECOVERED ALUMINUM CAP (AS NOTED)
- RECOVERED SECTION CORNER
- RECOVERED QUARTER-SECTION CORNER
- RECOVERED SIXTEENTH SECTION CORNER
- RECOVERED HIGHWAY ROW MONUMENT

**CERTIFICATE OF SURVEYOR**

I, ROBERT L. SI CLARE, DO HEREBY CERTIFY THAT I AM A PROFESSIONAL LAND SURVEYOR, REGISTERED UNDER THE LAWS OF THE STATE OF WYOMING, THAT THIS PLAT IS A TRUE, CORRECT AND COMPLETE PLAT OF ROBERTSON HILLS, AS LAD OUT, PLATTED, DEDICATED AND SHOWN HERON, AND THAT THIS PLAT WAS MADE UNDER MY DIRECT SUPERVISION AND THAT THE PHYSICAL, AND MATHEMATICAL DETAILS SHOWN THEREON ARE CORRECT AT THE TIME OF SUB-SUBMIT.

STATE OF WYOMING } 88  
 COUNTY OF NATRONA )

THIS FOREGOING INSTRUMENT WAS ACKNOWLEDGED BEFORE ME THIS 24<sup>th</sup> DAY OF JULY, 2015, BY ROBERT L. SI CLARE  
 WITNESS MY HAND AND OFFICIAL SEAL.

BY COMMISSION EXPIRES: October 31, 2017  
 Notary Public



**APPROVALS**

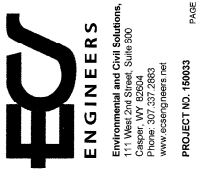
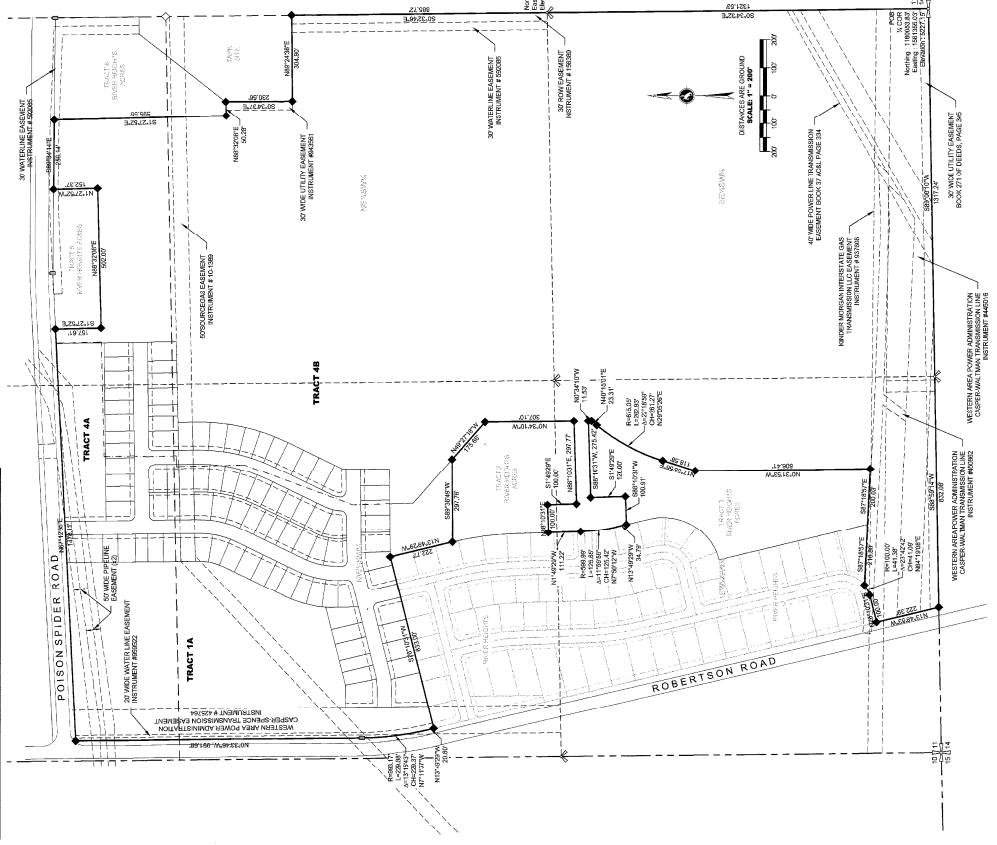
TOWN OF MILLS  
 APPROVED BY THE TOWN COUNCIL OF THE TOWN OF MILLS, WYOMING BY ORDINANCE NUMBER 656 DULY PASSED, ADOPTED AND APPROVED ON THIS 13 DAY OF JULY, 2015.

Mayor  
 TOWN CLERK

APPROVED BY THE NATRONA COUNTY COMMISSIONERS, NATRONA COUNTY, WYOMING ON THIS DAY OF 2015.

CHARMAY SPOFFORD COMMISSIONERS  
 ATTEST COUNTY CLERK

APPROVED COUNTY SURVEYOR

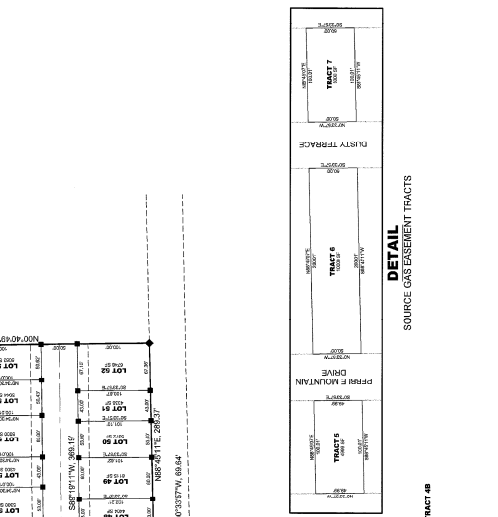


OWNER: ROBERTSON HILLS DEVELOPMENT, LLC  
 101 CASPER CENTER DRIVE 101  
 CASPER, WY 82401  
 SURVEYORS: FIELD: JEFF CONLEY  
 REVIEW: ROBERT L. SI CLARE, P.L.S.  
 DATE DRAWN: 04.22.2015

# FINAL PLAT OF ROBERTSON HILLS TO THE TOWN OF MILLS

A VACATION AND REPLAT OF TRACTS 1 AND 4 OF THE ANNEXATION PLAT OF RIVER HEIGHTS ACRES, LOCATED IN THE SOUTHWEST QUARTER (SW $\frac{1}{4}$ ) AND THE SOUTH HALF OF THE NORTHWEST QUARTER (S $\frac{1}{2}$ NW $\frac{1}{4}$ ) OF SECTION 11, T.33N., R.80W. OF THE 6th PRINCIPAL MERIDIAN, NATRONA COUNTY, WYOMING

Course #	Length	Bearing	Date	Course Direction	Course Length
01	1.56	S 89° 54' 35" W	11/12/15	S	1.56
02	1.56	S 89° 54' 35" W	11/12/15	S	1.56
03	1.56	S 89° 54' 35" W	11/12/15	S	1.56
04	1.56	S 89° 54' 35" W	11/12/15	S	1.56
05	1.56	S 89° 54' 35" W	11/12/15	S	1.56
06	1.56	S 89° 54' 35" W	11/12/15	S	1.56
07	1.56	S 89° 54' 35" W	11/12/15	S	1.56
08	1.56	S 89° 54' 35" W	11/12/15	S	1.56
09	1.56	S 89° 54' 35" W	11/12/15	S	1.56
10	1.56	S 89° 54' 35" W	11/12/15	S	1.56
11	1.56	S 89° 54' 35" W	11/12/15	S	1.56
12	1.56	S 89° 54' 35" W	11/12/15	S	1.56
13	1.56	S 89° 54' 35" W	11/12/15	S	1.56
14	1.56	S 89° 54' 35" W	11/12/15	S	1.56
15	1.56	S 89° 54' 35" W	11/12/15	S	1.56
16	1.56	S 89° 54' 35" W	11/12/15	S	1.56
17	1.56	S 89° 54' 35" W	11/12/15	S	1.56
18	1.56	S 89° 54' 35" W	11/12/15	S	1.56
19	1.56	S 89° 54' 35" W	11/12/15	S	1.56
20	1.56	S 89° 54' 35" W	11/12/15	S	1.56
21	1.56	S 89° 54' 35" W	11/12/15	S	1.56
22	1.56	S 89° 54' 35" W	11/12/15	S	1.56
23	1.56	S 89° 54' 35" W	11/12/15	S	1.56
24	1.56	S 89° 54' 35" W	11/12/15	S	1.56
25	1.56	S 89° 54' 35" W	11/12/15	S	1.56
26	1.56	S 89° 54' 35" W	11/12/15	S	1.56
27	1.56	S 89° 54' 35" W	11/12/15	S	1.56
28	1.56	S 89° 54' 35" W	11/12/15	S	1.56
29	1.56	S 89° 54' 35" W	11/12/15	S	1.56
30	1.56	S 89° 54' 35" W	11/12/15	S	1.56
31	1.56	S 89° 54' 35" W	11/12/15	S	1.56
32	1.56	S 89° 54' 35" W	11/12/15	S	1.56
33	1.56	S 89° 54' 35" W	11/12/15	S	1.56
34	1.56	S 89° 54' 35" W	11/12/15	S	1.56
35	1.56	S 89° 54' 35" W	11/12/15	S	1.56
36	1.56	S 89° 54' 35" W	11/12/15	S	1.56
37	1.56	S 89° 54' 35" W	11/12/15	S	1.56
38	1.56	S 89° 54' 35" W	11/12/15	S	1.56
39	1.56	S 89° 54' 35" W	11/12/15	S	1.56
40	1.56	S 89° 54' 35" W	11/12/15	S	1.56
41	1.56	S 89° 54' 35" W	11/12/15	S	1.56
42	1.56	S 89° 54' 35" W	11/12/15	S	1.56
43	1.56	S 89° 54' 35" W	11/12/15	S	1.56
44	1.56	S 89° 54' 35" W	11/12/15	S	1.56
45	1.56	S 89° 54' 35" W	11/12/15	S	1.56
46	1.56	S 89° 54' 35" W	11/12/15	S	1.56
47	1.56	S 89° 54' 35" W	11/12/15	S	1.56
48	1.56	S 89° 54' 35" W	11/12/15	S	1.56
49	1.56	S 89° 54' 35" W	11/12/15	S	1.56
50	1.56	S 89° 54' 35" W	11/12/15	S	1.56
51	1.56	S 89° 54' 35" W	11/12/15	S	1.56
52	1.56	S 89° 54' 35" W	11/12/15	S	1.56
53	1.56	S 89° 54' 35" W	11/12/15	S	1.56
54	1.56	S 89° 54' 35" W	11/12/15	S	1.56
55	1.56	S 89° 54' 35" W	11/12/15	S	1.56
56	1.56	S 89° 54' 35" W	11/12/15	S	1.56
57	1.56	S 89° 54' 35" W	11/12/15	S	1.56
58	1.56	S 89° 54' 35" W	11/12/15	S	1.56
59	1.56	S 89° 54' 35" W	11/12/15	S	1.56
60	1.56	S 89° 54' 35" W	11/12/15	S	1.56
61	1.56	S 89° 54' 35" W	11/12/15	S	1.56
62	1.56	S 89° 54' 35" W	11/12/15	S	1.56
63	1.56	S 89° 54' 35" W	11/12/15	S	1.56
64	1.56	S 89° 54' 35" W	11/12/15	S	1.56
65	1.56	S 89° 54' 35" W	11/12/15	S	1.56
66	1.56	S 89° 54' 35" W	11/12/15	S	1.56
67	1.56	S 89° 54' 35" W	11/12/15	S	1.56
68	1.56	S 89° 54' 35" W	11/12/15	S	1.56
69	1.56	S 89° 54' 35" W	11/12/15	S	1.56
70	1.56	S 89° 54' 35" W	11/12/15	S	1.56
71	1.56	S 89° 54' 35" W	11/12/15	S	1.56
72	1.56	S 89° 54' 35" W	11/12/15	S	1.56
73	1.56	S 89° 54' 35" W	11/12/15	S	1.56
74	1.56	S 89° 54' 35" W	11/12/15	S	1.56
75	1.56	S 89° 54' 35" W	11/12/15	S	1.56
76	1.56	S 89° 54' 35" W	11/12/15	S	1.56
77	1.56	S 89° 54' 35" W	11/12/15	S	1.56
78	1.56	S 89° 54' 35" W	11/12/15	S	1.56
79	1.56	S 89° 54' 35" W	11/12/15	S	1.56
80	1.56	S 89° 54' 35" W	11/12/15	S	1.56
81	1.56	S 89° 54' 35" W	11/12/15	S	1.56
82	1.56	S 89° 54' 35" W	11/12/15	S	1.56
83	1.56	S 89° 54' 35" W	11/12/15	S	1.56
84	1.56	S 89° 54' 35" W	11/12/15	S	1.56
85	1.56	S 89° 54' 35" W	11/12/15	S	1.56
86	1.56	S 89° 54' 35" W	11/12/15	S	1.56
87	1.56	S 89° 54' 35" W	11/12/15	S	1.56
88	1.56	S 89° 54' 35" W	11/12/15	S	1.56
89	1.56	S 89° 54' 35" W	11/12/15	S	1.56
90	1.56	S 89° 54' 35" W	11/12/15	S	1.56
91	1.56	S 89° 54' 35" W	11/12/15	S	1.56
92	1.56	S 89° 54' 35" W	11/12/15	S	1.56
93	1.56	S 89° 54' 35" W	11/12/15	S	1.56
94	1.56	S 89° 54' 35" W	11/12/15	S	1.56
95	1.56	S 89° 54' 35" W	11/12/15	S	1.56
96	1.56	S 89° 54' 35" W	11/12/15	S	1.56
97	1.56	S 89° 54' 35" W	11/12/15	S	1.56
98	1.56	S 89° 54' 35" W	11/12/15	S	1.56
99	1.56	S 89° 54' 35" W	11/12/15	S	1.56
100	1.56	S 89° 54' 35" W	11/12/15	S	1.56



**CERTIFICATE OF SURVEYOR**  
 I, ROBERT L. SI, CLARE, DO HEREBY CERTIFY THAT I AM A PROFESSIONAL LAND SURVEYOR, REGISTERED UNDER THE LAWS OF THE STATE OF WYOMING, THAT THIS PLAT IS A TRUE, CORRECT AND COMPLETE PLAT OF ROBERTSON HILLS AS Laid OUT, PLATTED, DEDICATED AND SHOWN HEREON, AND THAT THIS PLAT WAS MADE UNDER MY DIRECT SUPERVISION AND THAT THE PHYSICAL AND MATHEMATICAL DETAILS SHOWN HEREON ARE CORRECT AT THE TIME OF THIS SURVEY.

STATE OF WYOMING )  
 COUNTY OF NATRONA ) SS

THIS CORRESPONDING INSTRUMENT WAS ACKNOWLEDGED BEFORE ME THIS \_\_\_\_\_ DAY OF \_\_\_\_\_ 2017, BY ROBERT L. SI, CLARE.  
 WITNESS MY HAND AND OFFICIAL SEAL.

OWNER:  
 ROBERTSON HILLS DEVELOPMENT, LLC  
 4215 CENTER, SUITE 101  
 CASPER, WY 82401

SURVEYOR:  
 FIELD: JEFF CONLEY  
 REVIEW: ROBERT L. SI, CLARE P.L.S.

DATE DRAWN:  
 01.22.2015

PROJECT NO. 150033

**ENGINEERS**  
 Environmental and Civil Solutions, LLC  
 1000 15th Street, Suite 600  
 Casper, WY 82404  
 Phone: 307.337.2883  
 www.ecsengineers.net

**CERTIFICATE OF RECORDER**  
 I HEREBY CERTIFY THAT THIS PLAT WAS FILED FOR RECORD IN MY OFFICE AT \_\_\_\_\_ ON \_\_\_\_\_ THIS \_\_\_\_\_ DAY OF \_\_\_\_\_ 2017, AS INSTRUMENT NUMBER \_\_\_\_\_.

NATRONA COUNTY CLERK