



Survey & Plat By:  
 WLC ENGINEERING, SURVEYING & PLANNING  
 200 Pennsylvania Canyon, Wyoming 82601 (307) 266-2226  
 W/L No. 1731 Date: 08-22-07 Wood Chug: ROBINETT.SS

PLAT OF  
 ROBINETT SIMPLE SUBDIVISION  
 BEING PORTIONS OF NE1/4SW1/4, NW1/4SE1/4,  
 SECTION 23,  
 TOWNSHIP 34 NORTH, RANGE 81 WEST  
 SIXTH PRINCIPAL MERIDIAN  
 NATRONA COUNTY, WYOMING

LEGEND  
 O RECOVERED BRASS CAP  
 □ RECOVERED CORNER (AS NOTED)  
 ■ SET 5/8" REBAR WITH ALUMINUM CAP  
 N.89°49'14"E., 184.79'  
 MEASURED  
 EASEMENT  
 SUBDIVISION BOUNDARY



I, Don A. Davis, a registered professional land surveyor, License No. 4824, do hereby certify that this plat was made from notes taken during an actual survey made by me or under my direct supervision during the month of May, 2007 and that this plat to the best of my knowledge and belief, correctly and accurately represents said surveyed land.

CERTIFICATE OF SURVEYOR



Filed for record in the office of the county clerk of Natrona County, Wyoming on the 31<sup>st</sup> day of August, 2007.  
 COUNTY CLERK

Approved for recording by me and found to comply with the regulations for Natrona County, Wyoming, and is therefore approved for recording.  
 COUNTY DEVELOPMENT DIRECTOR, DATE 8/19/07  
 COUNTY HEALTH OFFICER, DATE

CERTIFICATE OF APPROVAL

Kevin Robnett hereby certifies that the above or foregoing subdivision, Robnett Simple Subdivision, being portions of NE1/4SW1/4, NW1/4SE1/4, NE1/4SE1/4, Section 23, Township 34 North, Range 81 West of the Sixth Principal Meridian, Natrona County, Wyoming, as it appears on this plat is with the free consent and in accordance with the desires of the above named and undersigned owners and proprietors of said lands, the name of said subdivision shall be "ROBINETT SIMPLE SUBDIVISION". Dated at Casper, Wyoming this 22<sup>nd</sup> day of August, 2007.

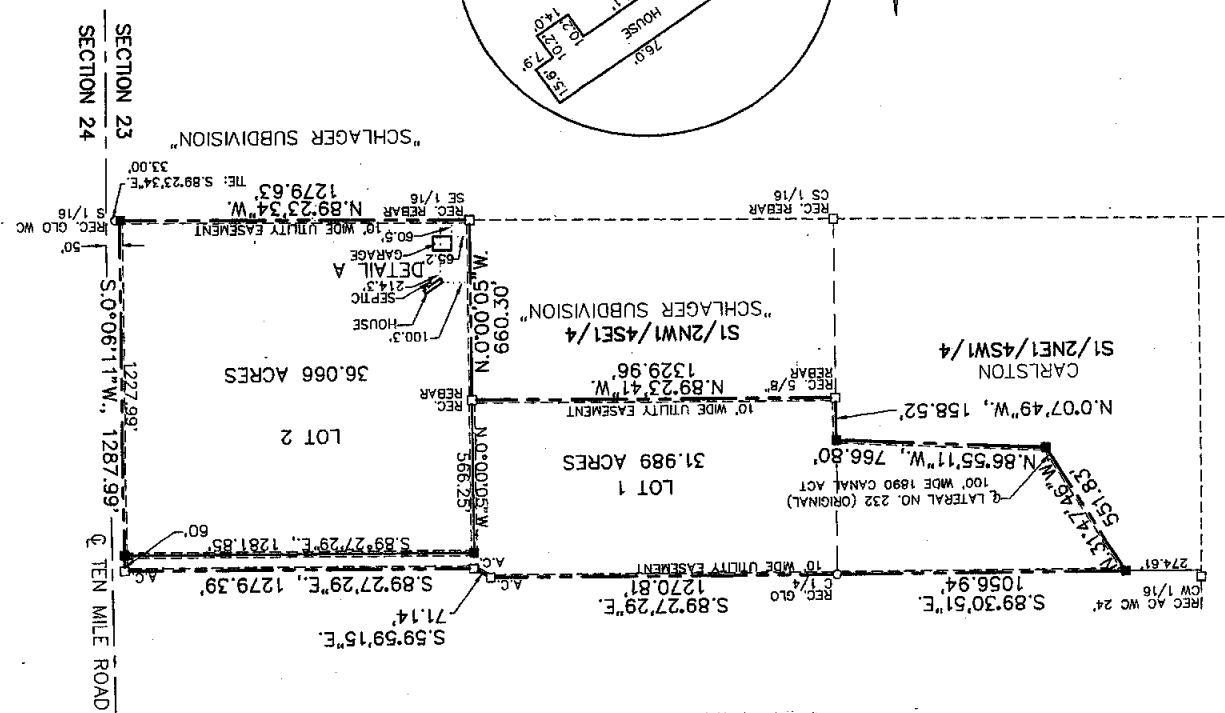
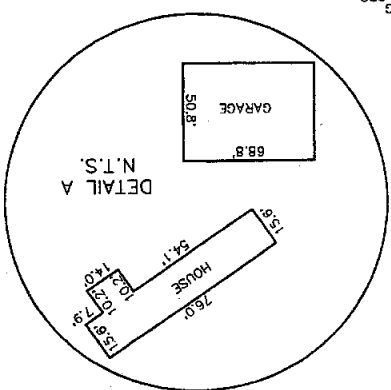
CERTIFICATE OF OWNER



Witness my hand and official seal.  
 My commission expires: Aug 08 2011  
 Heidi M. Phipps  
 Notary Public

The foregoing instrument was acknowledged before me by KEVIN ROBINETT on this 31<sup>st</sup> day of August, 2007.

SCALE: 1"=400'  
 BASIS OF BEARING  
 GEODETIC BASED ON GPS



NATRONA COUNTY CLERK, WYOMING  
 Recorded: SK  
 Range 81, 2007 10:30:17 AM  
 Fee: \$50.00  
 Pages: 1  
 827063  
 NC PLANNING