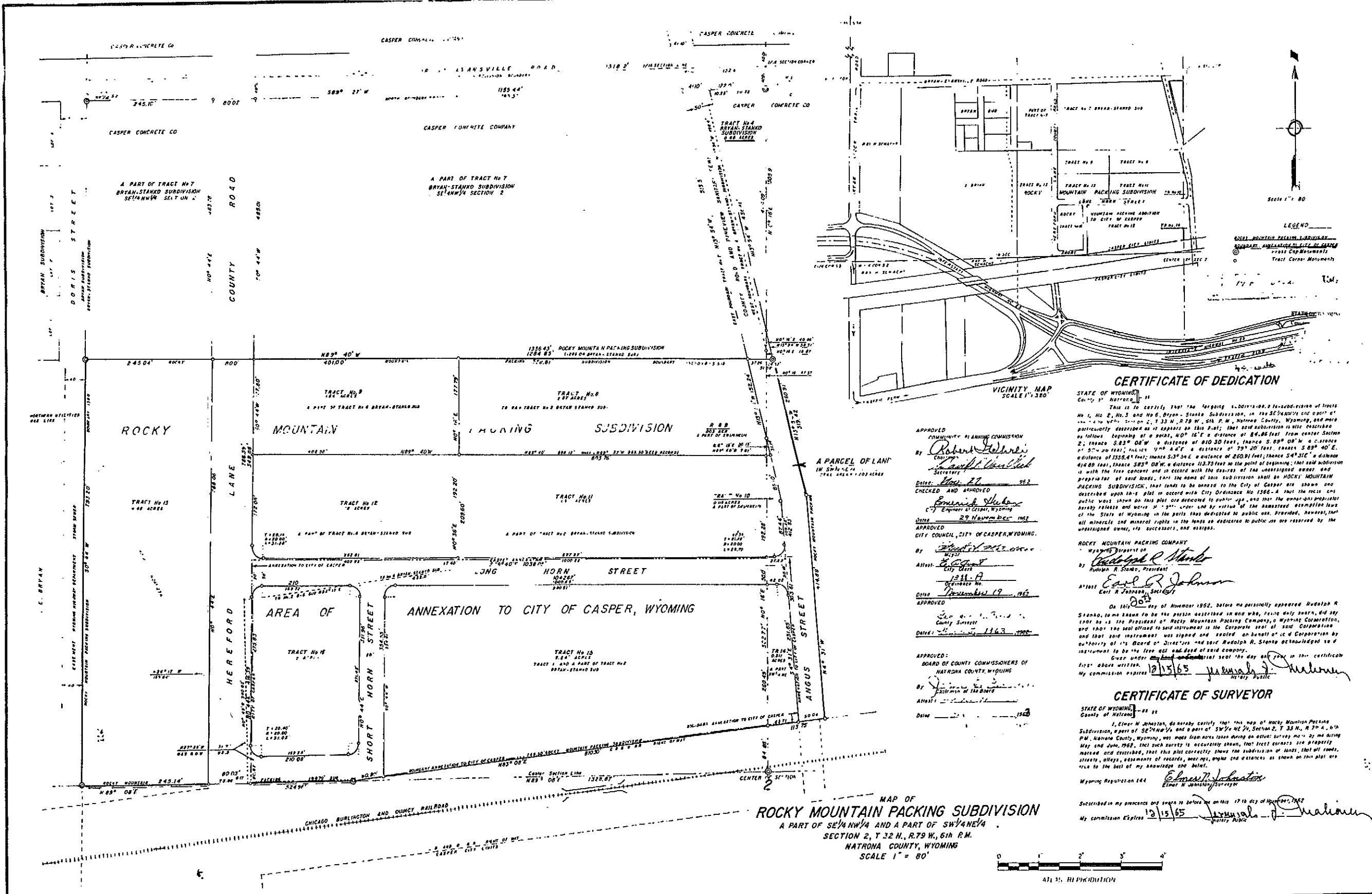


194/450

Packet 11  
Folder 5

1850



### CERTIFICATE OF DEDICATION

STATE OF WYOMING  
County of Natrona

This is to certify that the foregoing subdivision of Tracts No. 7, No. 8, No. 9 and No. 10, Bryan-Stanko Subdivision, in the SE 1/4 NW 1/4 Sec. 2, T. 32 N., R. 79 W., 6th P.M., Natrona County, Wyoming, and more particularly described as it appears on this plat; that said subdivision is the dedication of the following beginning at a point, 80° 10' E. a distance of 84.86 feet from center Section 2; thence S 23° 08' W. a distance of 810.30 feet; thence S 89° 08' W. a distance of 57.20 feet; thence 1/4° 44' E. a distance of 79° 20' feet; thence S 89° 40' E. a distance of 1358.4 feet; thence S 3° 34' E. a distance of 260.91 feet; thence S 4° 31' E. a distance of 416.80 feet; thence S 85° 08' W. a distance of 113.75 feet to the point of beginning; that said subdivision is with the free consent and in accord with the desires of the undersigned owner and preparator of said land, that the name of said subdivision shall be ROCKY MOUNTAIN PACKING SUBDIVISION; that land to be annexed to the City of Casper, as shown and described upon this plat in accord with City Ordinance No. 1386-A that the public use and purposes shown on this plat are dedicated to public use, and that the owner and preparator hereby release and waive all rights and by virtue of the annexation laws of the State of Wyoming in the parts thus dedicated to public use. Provided, however, that all mineral and mineral rights in the lands so dedicated to public use are reserved by the undersigned owner, his successors, and assigns.

APPROVED  
COMMUNITY PLANNING COMMISSION  
By: *Robert Johnson*  
Secretary  
Date: Nov. 27 1962  
CHECKED AND APPROVED  
*Ernest J. Johnson*  
City Engineer  
City of Casper, Wyoming  
Date: 29 November 1962

APPROVED  
CITY COUNCIL, CITY OF CASPER, WYOMING.  
By: *Ernest J. Johnson*  
City Engineer  
Date: December 19 1962

ROCKY MOUNTAIN PACKING COMPANY  
By: *Rudolph R. Stanko*  
Rudolph R. Stanko, President  
Attest: *Earl A. Johnson*  
Earl A. Johnson, Secretary

On this 20th day of November 1962, before me personally appeared Rudolph R. Stanko, to me known to be the person described in and who, being duly sworn, did say that he is the President of Rocky Mountain Packing Company, a Wyoming Corporation, and that the last of the above instrument is the Corporate seal of said Corporation and that said instrument was signed and sealed on behalf of said Corporation by authority of its Board of Directors and said Rudolph R. Stanko acknowledged as a part of the instrument to be the free act and deed of said company.  
Given under my hand and official seal this day and year in this certificate first above written.  
My commission expires 12/15/65 *Ernest J. Johnson*  
Notary Public

### CERTIFICATE OF SURVEYOR

STATE OF WYOMING  
County of Natrona

I, Elmer N. Johnston, do hereby certify that this map of Rocky Mountain Packing Subdivision, a part of SE 1/4 NW 1/4 and a part of SW 1/4 NE 1/4, Section 2, T. 32 N., R. 79 W., 6th P.M., Natrona County, Wyoming, was made from true data during an actual survey made by me during May and June, 1962, and that such survey is accurately shown, that exact corners are properly marked and described, that this plat correctly shows the subdivision of lands, that all roads, streets, alleys, easements of records, mortgages, and encumbrances as shown on this plat are true to the best of my knowledge and belief.  
Witness my hand and official seal this 17th day of November, 1962.  
My commission expires 12/15/65 *Ernest J. Johnson*  
Notary Public

MAP OF  
**ROCKY MOUNTAIN PACKING SUBDIVISION**  
A PART OF SE 1/4 NW 1/4 AND A PART OF SW 1/4 NE 1/4  
SECTION 2, T. 32 N., R. 79 W., 6th P.M.  
NATRONA COUNTY, WYOMING  
SCALE 1" = 80'

