

# 1847

Roesler Addition  
a replat of lots 9-14 Blk 9 East  
Burlington Addition  
Recorded 3-03-06 Inst. #786532

1847

NATRONA COUNTY CLERK  
JUDITH L. HARRIS  
100 N. GARDEN ST. SUITE 100  
NATRONA, WY 82401  
Phone: 338-2200 Fax: 338-0800  
Page: 1 of 1

# " ROESLER ADDITION "

786532

A REPLAT OF LOTS 9 - 14, BLOCK 9, EAST BURLINGTON ADDITION TO THE CITY OF CASPER LOCATED IN THE NORTHEAST QUARTER OF THE SOUTHEAST QUARTER OF SECTION 3, TOWNSHIP 33 NORTH, RANGE 79 WEST OF THE 6TH PRINCIPAL MERIDIAN, NATRONA COUNTY, WYOMING

CERTIFICATE OF DEDICATION  
STATE OF WYOMING ) SS  
COUNTY OF NATRONA )

FRED G. AND JUDY G. CASPER AND W. KENNETH AND SHERRY R. VOLKER HEREBY CERTIFY THAT THEY ARE THE OWNERS AND PROPRIETORS OF THE FOREGOING REPLAT LOCATED IN AND BEING LOTS 9 - 14 OF THE EAST BURLINGTON ADDITION TO THE CITY OF CASPER, IN THE NORTHEAST QUARTER OF THE SOUTHEAST QUARTER OF SECTION 3, TOWNSHIP 33 NORTH, RANGE 79 WEST OF THE 6TH PRINCIPAL MERIDIAN, NATRONA COUNTY, WYOMING AND BEING MORE PARTICULARLY DESCRIBED BY METES AND BOUNDS AS FOLLOWS:  
BEGINNING AT THE NORTHEAST CORNER OF SAID LOT 9, THENCE EAST A DISTANCE OF 125.00 FEET ALONG THE NORTH LINE OF SAID LOT 9 TO THE NORTHEAST CORNER OF SAID LOT 9, THENCE SOUTH A DISTANCE OF 150.00 FEET TO THE SOUTHWEST CORNER OF SAID LOT 14, THENCE NORTH A DISTANCE OF 150.00 FEET TO THE POINT OF BEGINNING.

THE TRACT OF LAND AS IT APPEARS ON THIS PLAT IS DEDICATED WITH THE FREE CONSENT AND IN ACCORDANCE WITH THE DESIRES OF THE UNDERSIGNED OWNERS AND PROPRIETORS, THE NAME OF THE REPLAT SHALL BE THE "ROESLER ADDITION".

*W. Kenneth Volker*  
W. KENNETH VOLKER

*Judy G. Casper*  
JUDY G. CASPER

*Sherry R. Volker*  
SHERRY R. VOLKER

*Fred G. Casper*  
FRED G. CASPER

*Valerie Flaherty*  
VALERIE FLAHERTY  
NATRONA COUNTY CLERK

THE FOREGOING INSTRUMENT WAS ACKNOWLEDGED BEFORE ME BY W. KENNETH AND SHERRY R. VOLKER ON THIS 15th DAY OF February 2008.

ON THIS 15th DAY OF January 2008.

ON THIS 16th DAY OF January 2008.

WITNESS MY HAND AND OFFICIAL SEAL.

WITNESS MY HAND AND OFFICIAL SEAL.

WITNESS MY HAND AND OFFICIAL SEAL.



## APPROVALS

APPROVED BY THE PLANNING & ZONING COMMISSION OF CASPER WYOMING THIS 20th DAY OF December 2005.

ATTEST: *Valerie Flaherty*

CHAIRMAN: *David E. Hays*

APPROVED BY THE CITY COUNCIL OF CASPER WYOMING THIS 30th DAY OF January 2008.

ATTEST: *Valerie Flaherty*

SUSTAINED AND APPROVED THIS 15th DAY OF February 2008.

WITNESSED AND APPROVED: *Paul A. Hays*  
CITY MANAGER

WITNESSED AND APPROVED: *Sherry R. Volker*

WITNESSED AND APPROVED: *Judy G. Casper*

## RECORDED

FILED FOR RECORDING AND INDEXING BY THE COUNTY CLERK OF NATRONA COUNTY, WYOMING THIS 3rd DAY OF March 2008.

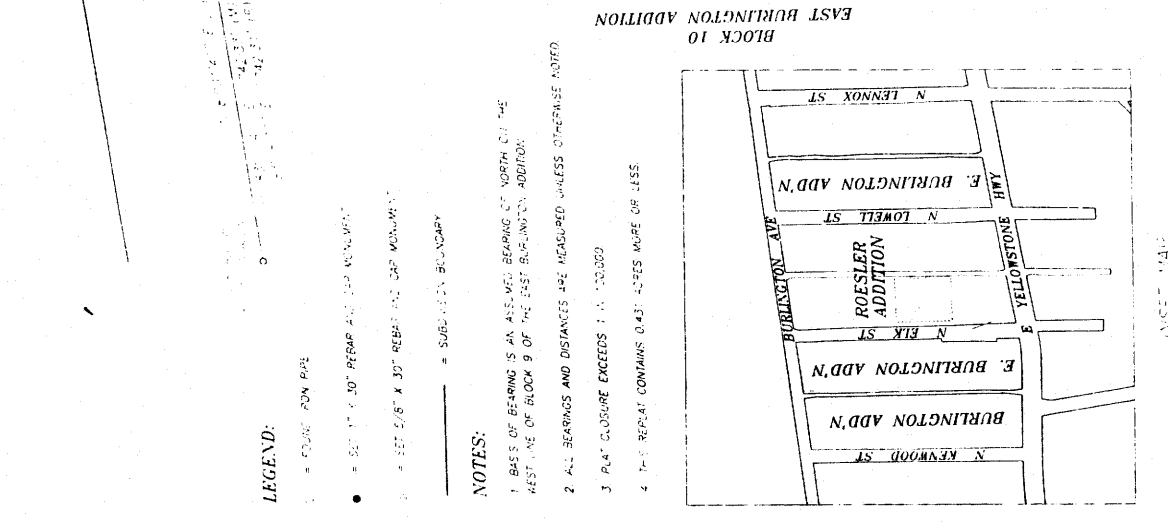
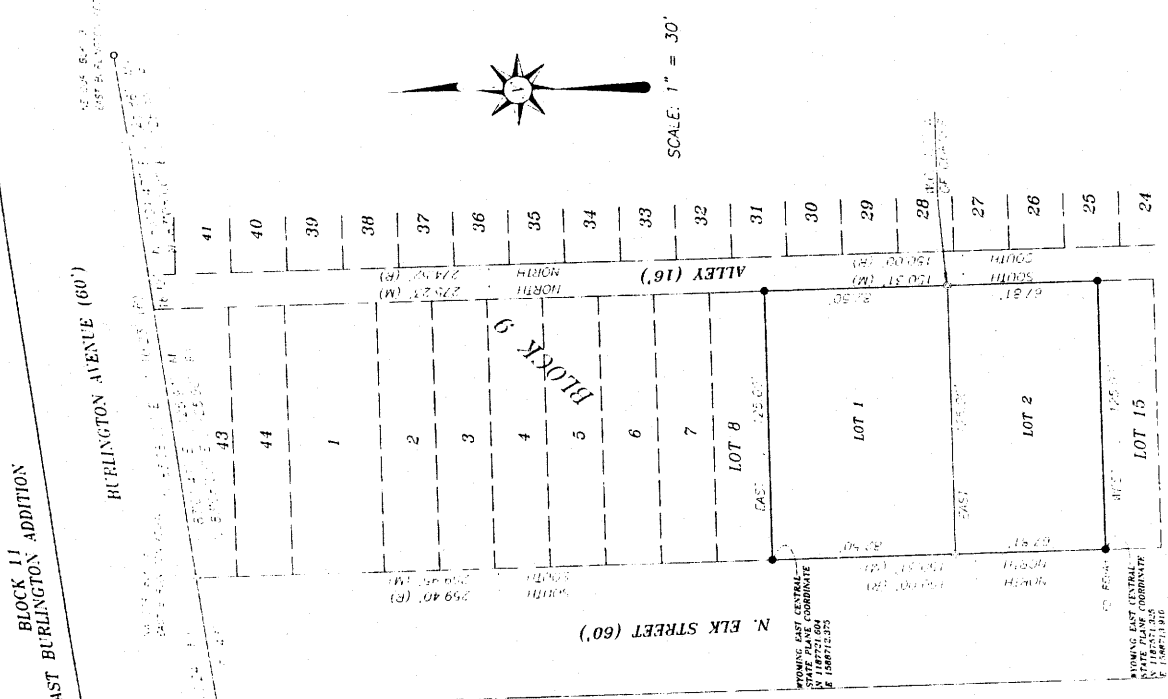
INSTRUMENT NO. 786532

*Paul A. Hays*  
COUNTY CLERK

*Judy G. Casper*  
COUNTY CLERK

*Sherry R. Volker*  
COUNTY CLERK

PREPARED BY: SER. SURVEYING SERVICE, CASPER, WYOMING (307)266-6629 JOB NO. 25-05PLAT



LEGEND:  
- - - - - = SQUARE IRON PIPE  
• = 50' x 30' PERMANENT SURVEY MONUMENT  
- - - - - = SUBSIDY BOUNDARY

NOTES:  
1. BASIS OF BEARING IS AN AZIMUTH BEARING OF NORTH ON THE WEST LINE OF BLOCK 9 OF THE EAST BURLINGTON ADDITION.  
2. ALL BEARINGS AND DISTANCES ARE MEASURED UNLESS OTHERWISE NOTED.  
3. PLAT CLOSURE EXCEEDS 1:100,000.  
4. THIS REPLAT CONTAINS 0.43% EXCESS MAPLE OF LESS.

SCALE: 1" = 200'

CERTIFICATE OF SURVEYOR  
STATE OF WYOMING ) SS  
COUNTY OF NATRONA )

*Paul A. Hays*  
COUNTY CLERK

*Judy G. Casper*  
COUNTY CLERK

*Sherry R. Volker*  
COUNTY CLERK



THE FOREGOING INSTRUMENT WAS ACKNOWLEDGED BEFORE ME ON THIS 16th DAY OF January 2008.  
ATTEST: *Valerie Flaherty*  
VALERIE FLAHERTY  
NATRONA COUNTY CLERK

ON THIS 16th DAY OF January 2008.  
WITNESS MY HAND AND OFFICIAL SEAL.

*Paul A. Hays*  
COUNTY CLERK

*Judy G. Casper*  
COUNTY CLERK

*Sherry R. Volker*  
COUNTY CLERK