

861483

NATRONA COUNTY CLERK, UT
 Renea Vitto
 Mar 2, 2009 03:58:39 PM
 Pages: 1
 Fee: \$50.00
 NC-P-R-IT-IG

WYOMING MACHINERY COMPANY INDUSTRIAL TRACT
 WYOMING MACHINERY COMPANY TRACT BRASS CAP
 NE CORNER WYOMING MACHINERY COMPANY TRACT BRASS CAP

CERTIFICATE OF DEDICATION
 STATE OF WYOMING
 COUNTY OF NATRONA) SS

THE UNDERSIGNED RUBY M. ROBINETT, DOES HEREBY CERTIFY THAT SHE IS THE OWNER AND PROPRIETOR OF A TRACT OF LAND, BEING A PORTION OF THE W/4 OF SECTION 1 T. 33N., R. 80W., NATRONA COUNTY, WYOMING, BEING MORE PARTICULARLY DESCRIBED AS FOLLOWS:

COMMENCING AT THE NORTHEAST CORNER OF THE WYOMING MACHINERY COMPANY TRACT ALSO BEING THE NORTHWEST CORNER OF THE PARCEL BEING DESCRIBED, MONUMENTED BY A BRASS CAP AND BEING THE POINT OF BEGINNING;

THENCE S54°08'17"E, A DISTANCE OF 453.50 FEET TO THE NORTHEAST CORNER OF THE PARCEL, MONUMENTED BY AN ALUMINUM CAP;

THENCE S00°45'52"E, ALONG THE EAST LINE OF THE PARCEL, A DISTANCE OF 617.27 FEET TO THE SOUTHEAST CORNER OF THE PARCEL, MONUMENTED BY AN ALUMINUM CAP;

THENCE S89°15'01"W, ALONG THE SOUTH LINE OF THE PARCEL, A DISTANCE OF 43.41 FEET TO A POINT MONUMENTED BY AN ALUMINUM CAP;

THENCE N00°48'59"W, A DISTANCE OF 100.0 FEET TO A POINT MONUMENTED BY AN ALUMINUM CAP;

THENCE S89°15'01"W, A DISTANCE OF 100.0 FEET TO A POINT MONUMENTED BY AN ALUMINUM CAP;

THENCE S00°48'59"E, A DISTANCE OF 100.00 FEET TO A POINT LOCATED ON THE SOUTH LINE OF THE PARCEL, MONUMENTED BY AN ALUMINUM CAP;

THENCE S89°15'01"W, ALONG THE SOUTH LINE OF THE PARCEL, A DISTANCE OF 186.97 FEET TO A POINT MONUMENTED BY AN ALUMINUM CAP;

THENCE S07°19'05"E, A DISTANCE OF 100.08 FEET TO A POINT LOCATED ON THE NORTH LINE OF PAIGE STREET, MONUMENTED BY AN ALUMINUM CAP;

THENCE S89°09'00"W, ALONG THE NORTH LINE OF PAIGE STREET, A DISTANCE OF 25.00 FEET TO THE SOUTHEAST CORNER OF THE PARCEL, MONUMENTED BY AN ALUMINUM CAP

THENCE N07°19'05"W, ALONG THE WEST LINE OF THE PARCEL, A DISTANCE OF 100.13 FEET TO A POINT MONUMENTED BY AN IRON PIPE;

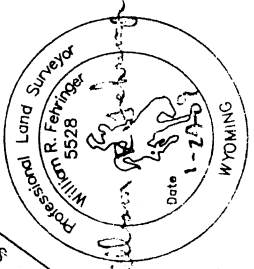
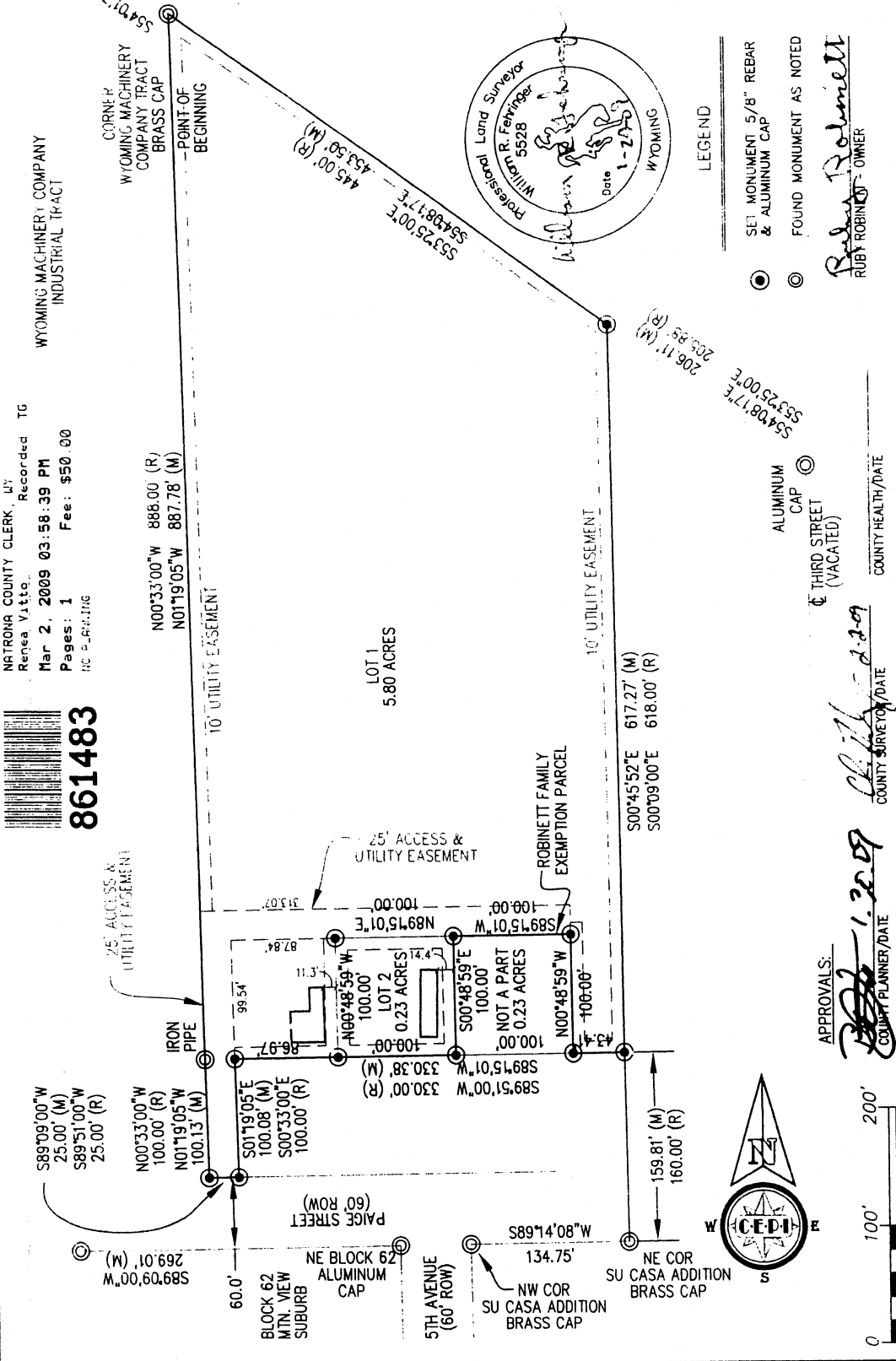
THENCE CONTINUING N07°19'05"W, ALONG THE WEST LINE OF THE PARCEL, A DISTANCE 1 887.78 FEET TO THE POINT OF BEGINNING.

THE ABOVE DESCRIBED TRACT OF LAND CONTAINS 6.26 ACRES, MORE OR LESS, AND IS SUBJECT TO ANY RIGHTS-OF-WAY AND/OR EASEMENTS, RESERVATIONS AND ENCUMBRANCES WHICH HAVE BEEN LEGALLY ACQUIRED.

THE TRACT OF LAND, AS IT APPEARS ON THIS PLAT, IS DEDICATED WITH THE FREE CONSENT AND IN ACCORDANCE WITH THE DESIRES OF THE UNDERSIGNED OWNERS AND PROPRIETORS. THE NAME OF THE SIMPLE SUBDIVISION SHALL BE "SAHRA SIMPLE SUBDIVISION" AND THAT SAID OWNERS AND PROPRIETORS HEREBY WAIVE AND RELINQUISH ALL RIGHTS GRANTED UNDER AND BY VIRTUE OF THE HOMESTEAD EXEMPTION LAWS OF THE STATE OF WYOMING.

CERTIFICATE OF OWNER

RUBY M. ROBINETT, OWNER, HEREBY CERTIFY THAT THE ABOVE OR FOREGOING SUBDIVISION, SAHRA SIMPLE SUBDIVISION, BEING PORTIONS OF THE W/4 OF SECTION 1, T. 33N., R. 80W., 6TH P.M., NATRONA COUNTY, WYOMING AS IT APPEARS ON THIS PLAT IS WITH THE FREE CONSENT AND IN ACCORDANCE WITH THE DESIRES OF THE ABOVE NAMED AND UNDERSIGNED OWNER AND PROPRIETOR OF SAID LANDS, THE NAME OF SAID SUBDIVISION SHALL BE "SAHRA SIMPLE SUBDIVISION", DATED AT CASPER, WYOMING THE 2nd DAY OF March, 2009.



LEGEND

- SET MONUMENT 5/8" REBAR & ALUMINUM CAP
- ⊙ FOUND MONUMENT AS NOTED

Ruby M. Robinett
 RUBY ROBINETT - OWNER

APPROVALS:
 COUNTY PLANNER/DATE: *Cheryl...* 1-20-09
 COUNTY HEALTH/DATE: _____

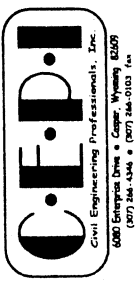
FILED FOR THE RECORD IN THE OFFICE OF THE COUNTY CLERK OF NATRONA COUNTY, WYOMING ON THE 2nd DAY OF MARCH, 2009.

WITNESS MY HAND AND OFFICIAL SEAL MY COMMISSION EXPIRES 8-31-11
William R. Fehring
 NOTARY PUBLIC

CERTIFICATE OF SURVEYOR
 STATE OF WYOMING
 COUNTY OF NATRONA) SS
 THAT I, WILLIAM R. FEHRINGER, DO HEREBY CERTIFY THAT I PREPARED THIS PLAT FROM AN ACTUAL AND ACCURATE SURVEY OF THE LAND AND THAT THE CORNER MONUMENTS SHOWN THEREON WERE PROPERLY PLACED UNDER MY DIRECT SUPERVISION, IN ACCORDANCE WITH THE SUBDIVISION REGULATIONS OF NATRONA COUNTY.

PLAT OF
SAHRA SIMPLE SUBDIVISION

PORTION OF THE W/4NW/4 SECTION 1, T. 33N., R. 80W.
 NATRONA COUNTY, WYOMING



CLOSURE EXCEEDS 1:232,084