

CERTIFICATE OF DEDICATION

STATE OF WYOMING
 COUNTY OF NATRONA

① (M & R)
 L = 145.88'
 R = 294.91'
 D = 28727.13"
 CH B = 558339.34'E
 CH = 145.37'

② (M & R)
 L = 47.76'
 R = 23.08'
 D = 118337.48"
 CH B = 513358.47'E
 CH = 39.66'

③ (M)
 L = 39.29'
 R = 75.00'
 D = 90702.41"
 CH B = 189722.08'W
 CH = 35.37'

④ (R)
 L = 39.27'
 R = 25.00'
 D = 90702.41"

⑤ (M & R)
 L = 39.27'
 R = 25.00'
 D = 90702.41"
 CH B = 189722.08'W
 CH = 35.37'

⑥ (M & R)
 L = 47.76'
 R = 23.08'
 D = 118337.48"
 CH B = 513358.47'E
 CH = 39.66'

⑦ (M)
 L = 39.29'
 R = 75.00'
 D = 90702.41"
 CH B = 189722.08'W
 CH = 35.37'

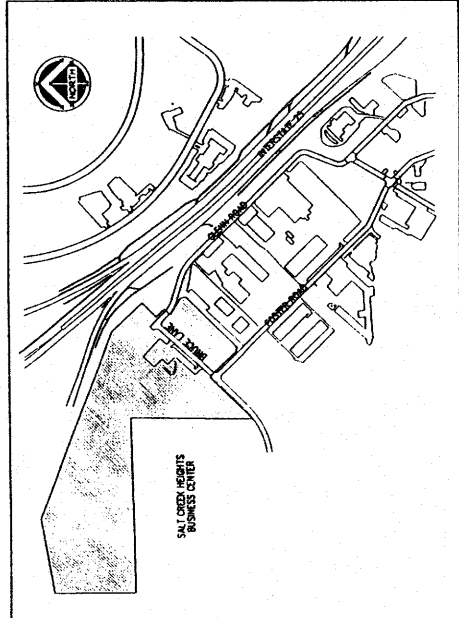
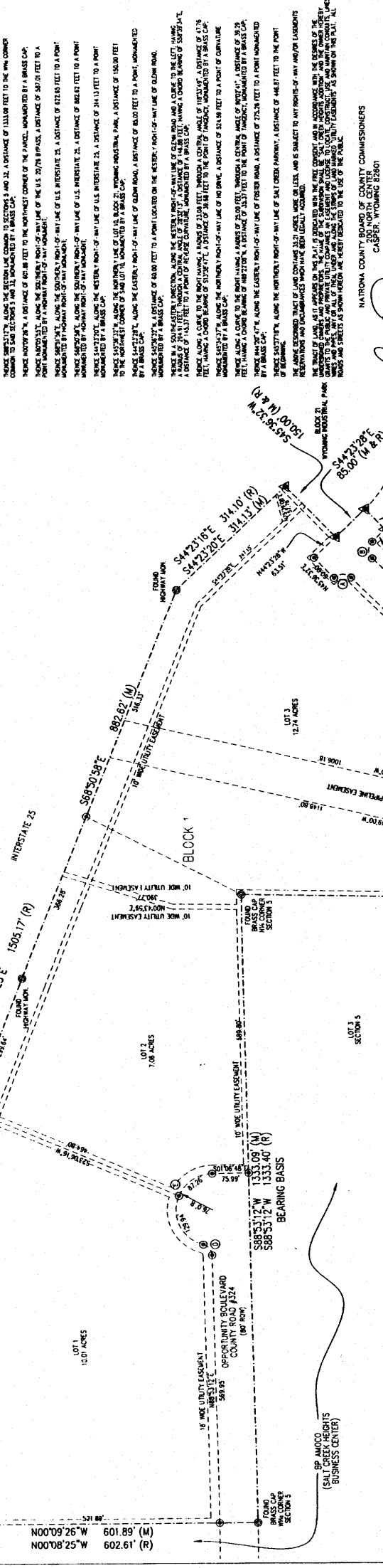
⑧ (R)
 L = 39.27'
 R = 25.00'
 D = 90702.41"

⑨ (M & R)
 L = 145.88'
 R = 294.91'
 D = 28727.13"
 CH B = 558339.34'E
 CH = 145.37'

⑩ (M & R)
 L = 47.76'
 R = 23.08'
 D = 118337.48"
 CH B = 513358.47'E
 CH = 39.66'

⑪ (M)
 L = 39.29'
 R = 75.00'
 D = 90702.41"
 CH B = 189722.08'W
 CH = 35.37'

⑫ (R)
 L = 39.27'
 R = 25.00'
 D = 90702.41"



VICINITY MAP
 SCALE: 1" = 500'

LEGEND

- SET BRASS CAP
- SET MONUMENT 5/8" REBAR & ALUMINUM CAP
- FOUND CORNER
- FOUND MONUMENT AS NOTED

SCALE: 1" = 100'

NOTES

1. ERROR OF CLOSURE EXCEEDS 1:1,348,734.

CERTIFICATE OF SURVEYOR

STATE OF WYOMING
 COUNTY OF NATRONA

I, WILLIAM R. FEMMERER, A REGISTERED PROFESSIONAL LAND SURVEYOR LICENSE NO. 3528, DO HEREBY CERTIFY THAT THIS PLAN WAS MADE FROM NOTES TAKEN DURING AN ACTUAL SURVEY MADE UNDER MY CLOSE PERSONAL SUPERVISION AND THAT THE SURVEY WAS MADE IN ACCORDANCE WITH THE SURVEYING ACTS OF 1907, 1913, AND 1920, AND ALL APPLICABLE LAWS AND ORDINANCES. ALL DIMENSIONS ARE EXPRESSED IN FEET AND DECIMALS THEREOF AND CORNERS REFERRED TO IN THIS MEMORANDUM ALL BEING TRUE AND CORRECT TO THE BEST OF MY KNOWLEDGE AND BELIEF.

THE FOREGOING INSTRUMENT WAS ACKNOWLEDGED BEFORE ME BY WILLIAM R. FEMMERER THIS 13th DAY OF JUNE, 2008.

WITNESS MY HAND AND OFFICIAL SEAL
 BY COMMISSION EXPIRES 06/30/2011



SALT CREEK HEIGHTS ADDITION

AS BEING A PORTION OF THE
 VACATION AND REPLAT OF
 BLOCK 20, LOTS 3 - 10, BLOCK 21, LOTS 1 - 9, ALL OF BLOCKS 22 & 23
 AND PORTIONS OF GLENM ROAD, FOSTER ROAD AND BRUCE LANE
 WYOMING INDUSTRIAL PARK REPLAT

SEASIDEWAY, S.W. 1/4 SECTION 32, T.34N., R.79W.
 AND LOT 3 OF SECTION 5, T.33N., R.79W.

NATRONA COUNTY WYOMING

NATRONA COUNTY BOARD OF COUNTY COMMISSIONERS
 CLARENCE W. WOODWARD (CHAIRMAN)
 DREW PERRINS - CHAIRPERSON

APPROVALS
 APPROVED BY THE BOARD OF COUNTY COMMISSIONERS OF NATRONA COUNTY, WYOMING BY RESOLUTION DATED AND PASSED THIS 27th DAY OF JUNE, 2008.
 ATTEST: COUNTY CLERK
 COUNTY PLANNER
 COUNTY SUPERVISOR
 COUNTY HEALTH DEPARTMENT

RECORDED
 FILED FOR RECORD IN THE OFFICE OF THE COUNTY CLERK OF NATRONA COUNTY, WYOMING THIS 27th DAY OF JUNE, 2008.
 INSTRUMENT NO. 744846

My term of office expires
 January 2, 2007

STATE OF WYOMING
 COUNTY OF NATRONA

794886