

NATRONA COUNTY CLERK, WY
 Renea Vitto
 May 3, 2012 10:19:41 AM
 Pages: 1 Fee: \$50.00
 CITY OF CASPER



CERTIFICATE OF DEDICATION

STATE OF WYOMING
 COUNTY OF NATRONA SS

THE UNDERSIGNED, FAE HOLDINGS 412068, LLC, HEREBY CERTIFY THAT THEY ARE THE OWNERS AND PROPRIETORS OF THE FOLLOWING DESCRIBED PARCEL OF LAND SITUATE IN THE SECTION 14 OF SECTION 10, T.33N., R.79W., NATRONA COUNTY, WYOMING, ALSO KNOWN AS LOTS 15 - 18, BLOCK 62, SHERIDAN HEIGHTS ADDITION TO THE CITY OF CASPER, WYOMING, BEING MORE PARTICULARLY DESCRIBED AS FOLLOWS:

COMMENCING AT THE NORTHEAST CORNER OF SAID BLOCK 62, SHERIDAN HEIGHTS ADDITION, MONUMENTED BY AN ALUMINUM CAP;

THENCE S00°48'06"E, ALONG THE EAST LINE OF SAID BLOCK 62 AND THE WEST LINE OF SOUTH JACKSON STREET, A DISTANCE OF 150.18 FEET TO THE NORTHEAST CORNER OF THE PARCEL, ALSO BEING THE BEING THE NORTHEAST CORNER OF SAID LOT 18, MONUMENTED BY A BRASS CAP WITNESS CORNER LOCATED S00°48'06"E, 1.0 FEET FROM THE ACTUAL CORNER LOCATION AND BEING THE POINT OF BEGINNING;

THENCE S00°48'06"E, ALONG THE EAST LINE OF THE PARCEL AND THE WEST LINE OF SOUTH JACKSON STREET, A DISTANCE OF 99.84 FEET TO THE SOUTHEAST CORNER OF THE PARCEL, ALSO BEING THE NORTHEAST CORNER OF LOT 14, BLOCK 62, MONUMENTED BY A BRASS CAP WITNESS CORNER LOCATED N00°48'06"W, 1.0 FEET FROM THE ACTUAL CORNER LOCATION;

THENCE S89°09'08"W, ALONG THE SOUTH LINE OF THE PARCEL AND THE NORTH LINE OF SAID LOT 14, A DISTANCE OF 140.03 FEET TO THE SOUTHWEST CORNER OF THE PARCEL, ALSO BEING THE NORTHWEST CORNER OF SAID LOT 14, MONUMENTED BY A BRASS CAP;

THENCE N00°50'52"W, ALONG THE WEST LINE OF THE PARCEL AND THE EAST LINE OF A PUBLIC ALLEY, A DISTANCE OF 99.84 FEET TO THE NORTHWEST CORNER OF THE PARCEL, ALSO BEING THE SOUTHWEST CORNER OF LOT 19, BLOCK 62, MONUMENTED BY A BRASS CAP;

THENCE N89°09'08"E, ALONG THE NORTH LINE OF THE PARCEL AND THE SOUTH LINE OF SAID LOT 19, A DISTANCE OF 140.11 FEET TO THE POINT OF BEGINNING.

THE ABOVE DESCRIBED TRACT OF LAND CONTAINS 0.22 ACRES, (13,986 S.F.), MORE OR LESS, AND IS SUBJECT TO ANY RIGHTS-OF-WAY AND/OR EASEMENTS, RESERVATIONS AND ENCUMBRANCES WHICH HAVE BEEN LEGALLY ACQUIRED.

THE TRACT OF LAND, AS IT APPEARS ON THIS PLAT, IS DEDICATED WITH THE FREE CONSENT AND IN ACCORDANCE WITH THE DESIRES OF THE UNDERSIGNED OWNER AND PROPRIETOR. THE NAME OF THE SUBDIVISION SHALL BE "SHERIDAN HEIGHTS ADDITION NO. 2" AND THE OWNER HEREBY GRANTS TO THE PUBLIC AND PRIVATE UTILITY COMPANIES AN EASEMENT AND LICENSE TO LOCATE, CONSTRUCT, USE AND MAINTAIN CONDUITS, LINES, WIRES AND PIPES, ANY OR ALL OF THEM, UNDER AND ALONG THE STRIPS OF LAND MARKED "UTILITY EASEMENT" AND "UTILITY & PUBLIC ACCESS EASEMENT" AS SHOWN ON THIS PLAT. THE "UTILITY & PUBLIC ACCESS EASEMENT" IS DEDICATED TO THE USE OF THE PUBLIC AS AN ACCESS TO ALL LOTS WITHIN THIS SUBDIVISION. JACKSON STREET AND THE ALLEY AS SHOWN HAVE PREVIOUSLY BEEN DEDICATED TO THE USE OF THE PUBLIC.

Judy D. Langdon
 JUDY D. LANGDON - MEMBER

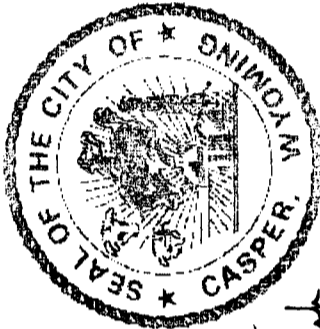
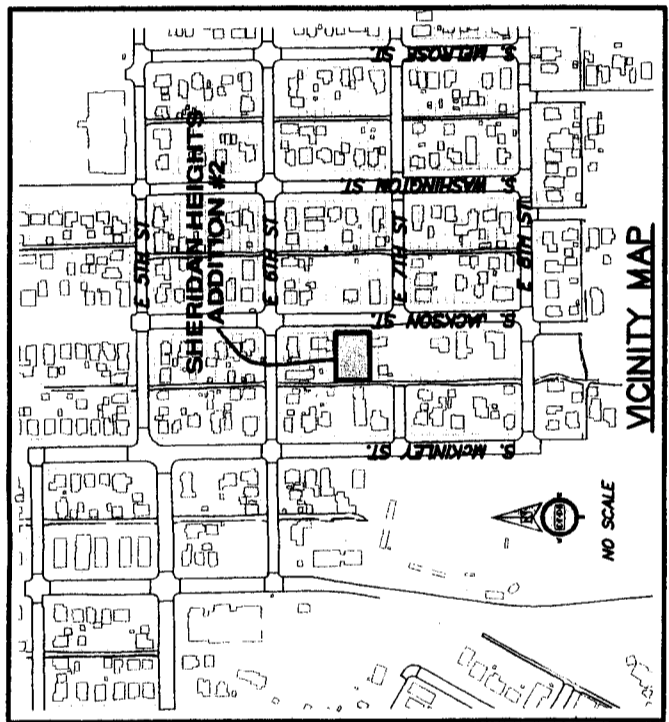
THE FOREGOING INSTRUMENT WAS ACKNOWLEDGED BEFORE ME BY DENNIS R. & JUDY D. LANGDON, MEMBERS OF FAE HOLDINGS 412068, LLC, THIS 18th DAY OF APRIL, 2012.

WITNESS MY HAND AND OFFICIAL SEAL:
 MY COMMISSION EXPIRES *4/15/15*
 NOTARY PUBLIC

VACATION & REPLAT OF
 LOTS 15 - 18, BLOCK 62
 SHERIDAN HEIGHTS ADDITION
 AS

SHERIDAN HEIGHTS ADDITION NO. 2

TO THE CITY OF CASPER, WYOMING
 BEING A PORTION OF THE
 SE 1/4 NW 1/4 SECTION 10, T.33N., R.79W., 6TH P.M.
 NATRONA COUNTY, WYOMING
 FEBRUARY, 2012



APPROVALS

APPROVED BY THE CITY COUNCIL OF CASPER, WYOMING BY RESOLUTION NO. 12, 17th DAY OF *March*, 2012.

ATTEST: *Niz Becher*
 SECRETARY

APPROVED BY THE CITY COUNCIL OF CASPER, WYOMING BY RESOLUTION NO. 12, 17th DAY OF *April*, 2012.

ATTEST: *Walt McNeill*
 CITY CLERK

INSPECTED AND APPROVED THIS *23rd* DAY OF *April*, 2012.

INSPECTED AND APPROVED THIS *23rd* DAY OF *April*, 2012.

INSPECTED AND APPROVED THIS *23rd* DAY OF *April*, 2012.

RECORDED
 FILED FOR RECORD IN THE OFFICE OF THE COUNTY CLERK OF NATRONA COUNTY, WYOMING, THIS
 DAY OF *5*, 2012.
 INSTRUMENT NO. *927488*

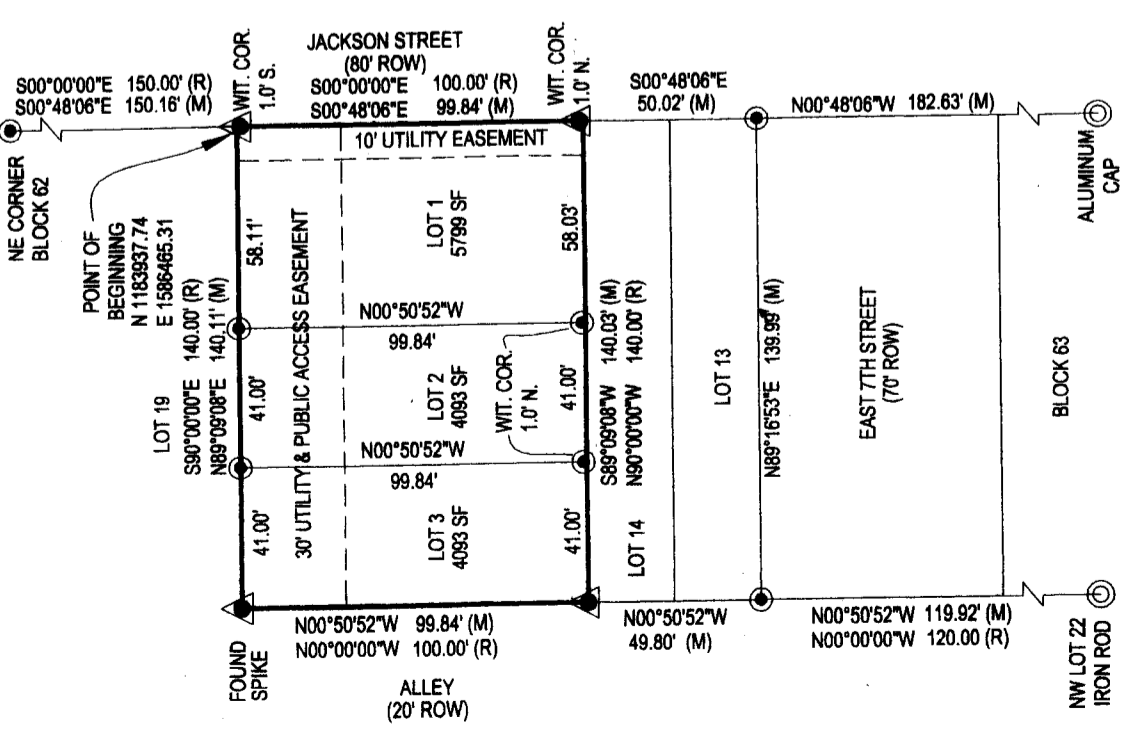
Renea Vitto
 COUNTY CLERK

CERTIFICATE OF SURVEYOR
 STATE OF WYOMING } SS
 COUNTY OF NATRONA }

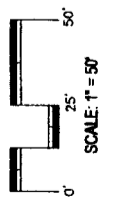
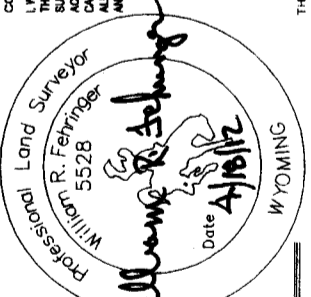
WILLIAM R. FEHRINGER, A REGISTERED PROFESSIONAL LAND SURVEYOR IN THE STATE OF WYOMING, LICENSE NO. 5024, HEREBY STATE THAT THIS PLAT WAS PREPARED FROM NOTES TAKEN DURING AN ACTUAL SURVEY MADE BY ME OR OTHERS UNDER MY DIRECT SUPERVISION IN THE MONTH OF JANUARY, 2010 AND THAT THIS PLAT, TO THE BEST OF MY KNOWLEDGE AND BELIEF, CORRECTLY AND ACCURATELY REPRESENTS SAID SURVEY. ALL BOUNDARY PERMETER CORNERS ARE WELL AND ACCURATELY MONUMENTED BY BRASS CAPS (OR AS NOTED) AS OF THE DATE OF THIS SURVEY AND THAT ALL LOT CORNERS HAVE BEEN MONUMENTED AS SHOWN UPON THE PLAT. ALL DIMENSIONS ARE EXPRESSED IN FEET AND DECIMALS THEREOF, AND COURSES REFERRED TO THE TRUE MERIDIAN, ALL BEING TRUE AND CORRECT TO THE BEST OF MY KNOWLEDGE AND BELIEF.

SAMI FAUBER
 Notary Public
 Natrona County, Wyoming
 My Commission Expires *4/15/15*

THE FOREGOING INSTRUMENT WAS ACKNOWLEDGED BEFORE ME BY WILLIAM R. FEHRINGER THIS 18th DAY OF APRIL, 2012.
 WITNESS MY HAND AND OFFICIAL SEAL
 MY COMMISSION EXPIRES *4/15/15*
 NOTARY PUBLIC



NOTES
 1. ERROR OF CLOSURE EXCEEDS 1:1,199,550.
 2. BASIS OF BEARINGS IS THE WYOMING STATE PLANE COORDINATE SYSTEM, EAST CENTRAL ZONE, NAD 1983/86.
 3. THE CONVERGENCE ANGLE AT THE WEST 1/4 CORNER OF SECTION 7 IS 00°41'42.495", AND THE COMBINED FACTOR IS 0.9997708.



Civil Engineering Professionals, Inc.
 6080 Enterprise Drive, Casper, WY 82409
 Phone 307.266.4346 Fax 307.266.0103
 www.cepi-casper.com

LEGEND
 ▲ SET BRASS CAP
 ● SET MONUMENT 5/8" REBAR & ALUMINUM CAP
 ⊙ FOUND MONUMENT AS NOTED