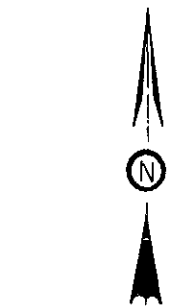
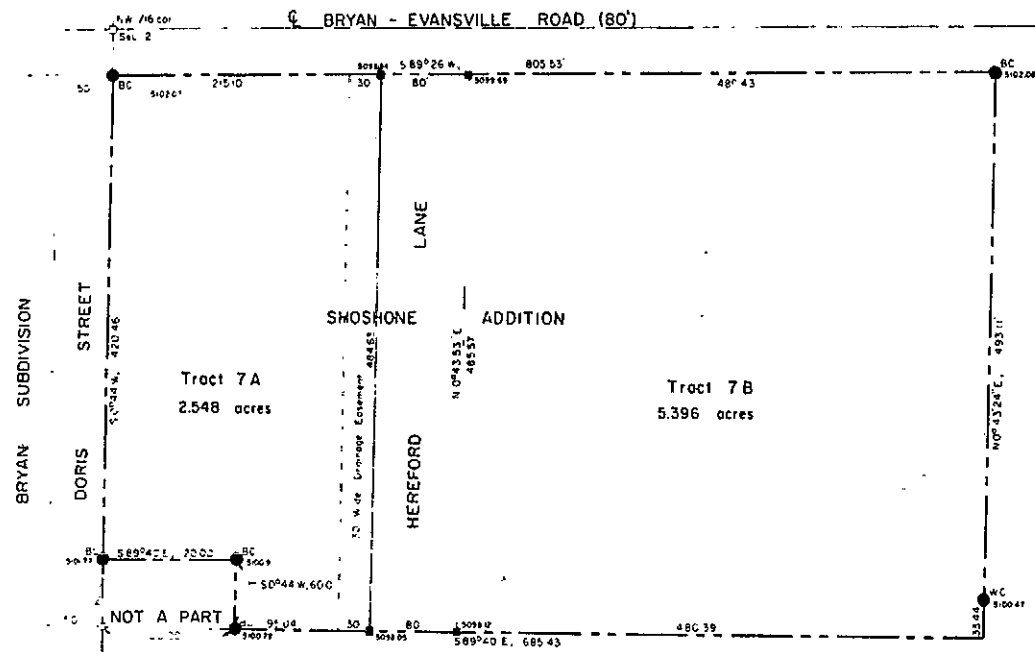


CITY OF CASPER

UNPLATTED LANDS

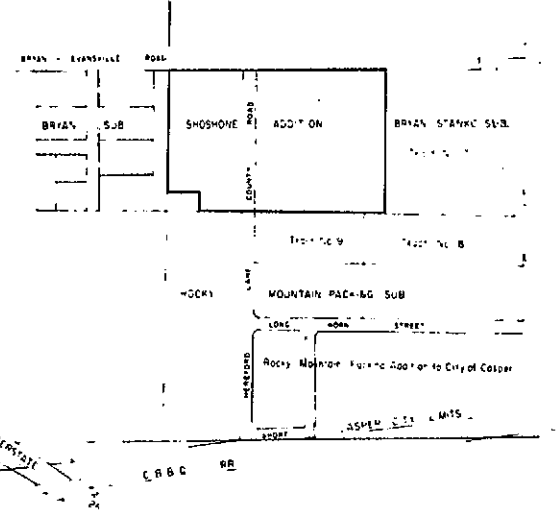


Scale 1" = 80'

PLAT and Survey by  
Worthington, Lenhart and Carpenter, Inc  
632 South David Street, Casper, Wyoming

LEGEND

- ⊕ - Aluminum cap set this survey
- ⊙ - Local corner
- ⊛ - Brass cap set this survey
- ⊞ - Elevations as referred to City datum



CERTIFICATE OF DEDICATION

237

This is to certify that the Addition and Subdivision set out by this Plat, to be known as "Shoshone Addition" to the City of Casper, Wyoming, and being a part of Tract No. 7, Bryan-Stanko Subdivision, a Subdivision of parts of the SE1/4NW1/4, Section 2, T.33N., R.79W. of the Sixth Principal Meridian, Natrona County, Wyoming, and being more particularly described by metes and bounds to wit:

Beginning at the northwest corner of said Tract No. 7, said point and corner being located on the south right-of-way of the Bryan-Evansville Road, and also on the west line of the SE1/4NW1/4 said Section 2, which point bears S 0°44'W, 40.00 feet from the NW-1/6 corner of said Section 2.

Thence from the Point of Beginning and the northwest corner of said Tract No. 7 and along the west line of said SE1/4NW1/4 and Tract No. 7 S0°44'W, 420.46 feet to a point; thence S 89°40'E, 120.00 feet to a point, thence S 0°44'W, 60.00 feet to a point on the south line of Tract No. 7 of the Bryan-Stanko Subdivision; thence along the south line of said Tract No. 7, S89°40'E, 685.43 feet to a point and southeast corner of said Addition; thence N 0°43'24"E, 493.11 feet to a point on the north line of said Tract No. 7, which marks the northeast corner of said Addition; thence along the north line of Tract No. 7 of the Bryan-Stanko Subdivision, S 89°26'W, 805.53 feet to a point and northwest corner thereof and the Point of Beginning and containing 8.834 acres, more or less.

As appears on this Plat is with the free consent and in accordance with the desires of the undersigned owners and proprietors of said described lands. The roads and streets contained in said Addition are hereby dedicated to the use of the public.

SHOSHONE ENTERPRISES

ATTEST: \_\_\_\_\_ BY: q. l. Finselman  
Secretary Owner

236  
STATE OF WYOMING }  
County of Natrona }

The foregoing instrument was acknowledged before me by q. l. Finselman,  
Owner, Shoshone Enterprises, this 11 day of March, 1976

My Commission Expires: JAN. 22, 1977 W. L. Johnson  
Notary Public

CERTIFICATE OF SURVEYOR

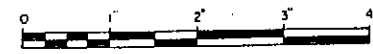
STATE OF WYOMING }  
County of Natrona }

I, Maynard Johnson, of Casper, Wyoming, hereby certify that this Plat was prepared from notes taken during an actual survey made by me on the 10th day of November, 1975, and from the records and plats of Worthington, Lenhart and Carpenter, Inc., and that the foregoing Plat correctly represents said survey and "Shoshone Addition" and is true and correct to the best of my knowledge and belief. The "Shoshone Addition" is well and accurately monumented, as required by the City of Casper; all dimensions are expressed in feet and decimals thereof; and bearings are referred to the true meridian.

Wyoming Registration No. 510, Land Surveyor Maynard Johnson  
Maynard Johnson

Subscribed in my presence and sworn to before me this 11 day of March, 1976.

My Commission Expires: JAN. 22, 1977 W. L. Johnson  
Notary Public



ATLAS REPRODUCTION

APPROVALS

APPROVED: Community Planning Commission of Casper, Wyoming, this 18<sup>th</sup> day of March, 1976, and forwarded to the City Council of Casper, Wyoming with recommendation that said Plat be approved.

L. Charles Davis  
Secretary

Bill D. Johnson  
Chairman

APPROVED City Council of Casper, Wyoming by Ordinance No. 45-76, duly passed, adopted and approved on the 21<sup>st</sup> day of September, 1976

Sam C. Johnson  
Mayor

\_\_\_\_\_  
President of the Council

W. L. Johnson  
City Clerk

APPROVED: Board of County Commissioners of Natrona County, Wyoming, by Resolution duly passed on the 1 day of April, 1976

ATTEST: John P. Brunk  
County Clerk

John P. Brunk  
Chairman of the Board

INSPECTED AND APPROVED on the 5<sup>th</sup> day of August, 1976.

Dary S. Carver  
County Engineer

INSPECTED AND APPROVED on the 5<sup>th</sup> day of August, 1976.

H. H. Worthington  
County Surveyor

INSPECTED AND APPROVED on the 7<sup>th</sup> day of SEP., 1976.

W. L. Johnson  
County Health Officer

FILED FOR RECORD in the Office of the County Clerk of Natrona County, Wyoming.

11 March 1976  
Date

W. L. Johnson  
County Clerk

235  
PLAT OF  
SHOSHONE ADDITION  
to the City of Casper  
Natrona County, Wyoming

A Subdivision of Part of  
Tract No. 7, Bryan-Stanko Subdivision  
Parts of the SE1/4NW1/4  
Section 2, T.33N., R.79W.  
of the Sixth Principal Meridian  
Natrona County, Wyoming

272/235