

233/20

Packet 2  
Fields 3

PLAT  
 "SOUTH GARDEN CREEK ACRES NO. 4"  
 A SUBDIVISION  
 OF A PART OF THE SE 1/4 NW 1/4, SECTION 29  
 T.33N, R.79W of the 6th PRINCIPAL MERIDIAN  
 NATRONA COUNTY, WYOMING  
 SCALE 1" = 80'

CERTIFICATE OF PLATTING & DEDICATION

GENERAL ROSE MEMORIAL HOSPITAL, a Colorado Corporation, hereby certifies that the above and foregoing subdivision of a part of the SE 1/4 NW 1/4, Section 29, T.33N, R.79W of the 6th Principal Meridian, Natrona County, Wyoming and being more particularly described by metes and bounds as follows:

Beginning at the southwest corner of said SE 1/4 NW 1/4, Section 29, which point and corner also marks the southwest corner of said subdivision, thence along the southerly line thereof, 11 1/2" = 733.98 feet to a point in the westerly line of "South Garden Creek Acres No. 2", also a subdivision of parts of said Section 29, thence along the westerly line of "South Garden Creek Acres No. 2", 11 1/2" = 57' E, 391.93 feet to an angle point, thence 11 1/2" = 48° 24' E, 188.58 feet to an angle point, thence 11 1/2" = 51' W, 432.96 feet to a point marking the northwest corner of said "South Garden Creek Acres No. 2", thence along the westerly projection of the northerly line thereof and also the northerly line of the subdivision being described, 5 89° 33' W, 776.29 feet to a point in the westerly line of said SE 1/4 NW 1/4, Section 29, which point also marks the northwest corner of the subdivision being described; thence along the westerly line of said subdivision and the SE 1/4 NW 1/4, Section 29, S 0° 08' W, 95' 5" feet to the southwest corner thereof and the point of beginning, and containing 17.12 acres more or less.

and as it appears on this plat, is with the free consent and in accordance with the desires of the above named and undersigned owners and proprietors of said lands, the name of said subdivision shall be "SOUTH GARDEN CREEK ACRES NO. 4"; Further 60 feet wide "West 50th Street" and 50 feet wide "Valley Road" as set forth hereon and containing 4.28 acres more or less are dedicated to the use of the public.

Dated at Denver, Colorado this \_\_\_ day of \_\_\_, 1970.  
 GENERAL ROSE MEMORIAL HOSPITAL, a Colorado Corporation

ATTEST: SECRETARY \_\_\_\_\_ BY: PRESIDENT \_\_\_\_\_

STATE OF COLORADO ss  
 COUNTY OF DENVER ss

On this 20 day of January, 1970 before me personally appeared Jack Levy, to me personally known, who, being by me duly sworn, did say that he is the President of GENERAL ROSE MEMORIAL HOSPITAL, a Colorado Corporation, and that the seal affixed to the foregoing instrument is the Corporate Seal of said corporation, and that the above and foregoing certificate was signed and sealed on behalf of said corporation by authority of the Board of Directors of said corporation, and said Jack Levy acknowledged said certificate to be the free act and deed of said corporation.

Given under my hand and notarial seal the day and year first above written.  
 My commission expires June 25, 1972.  
 Notary Public

PLAT APPROVED

Plat approved by the COMMUNITY PLANNING COMMISSION of Casper, Wyoming and forwarded to the City Council of Casper, Wyoming, this \_\_\_ day of \_\_\_, 19\_\_\_, with recommendation that said plat be approved.

ATTEST: SECRETARY \_\_\_\_\_ CHAIRMAN OF COMMISSION \_\_\_\_\_

CITY COUNCIL, City of Casper, Wyoming, by Ordinance No. \_\_\_ duly passed, adopted and approved on the \_\_\_ day of December, 1970.

BOARD OF COUNTY COMMISSIONERS, Natrona County, Wyoming, by Resolution duly passed on the \_\_\_ day of December, 1970.

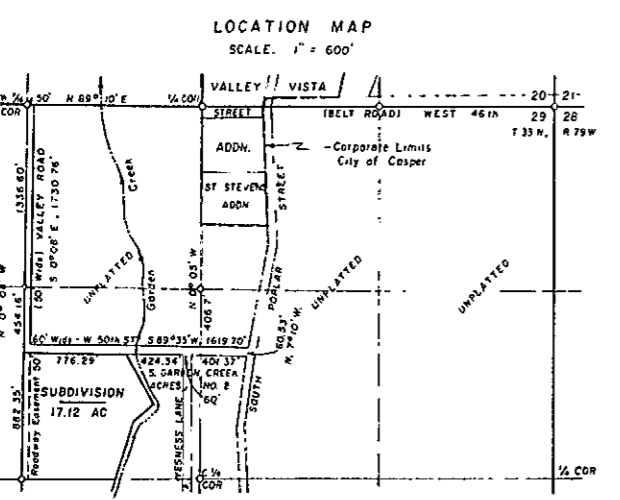
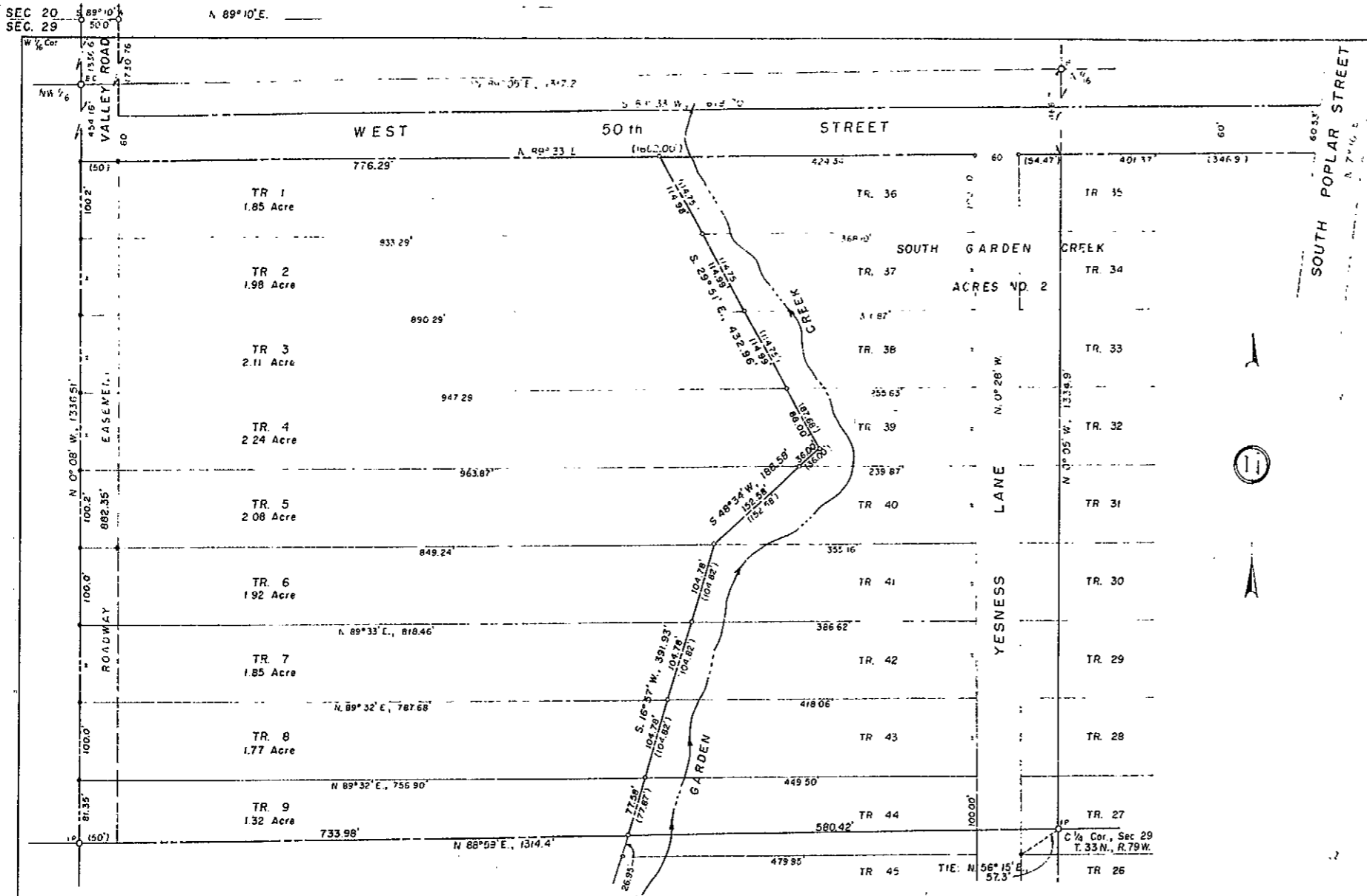
Attest: \_\_\_\_\_ MAYOR  
 \_\_\_\_\_ PRESIDENT OF COUNCIL  
 ATTEST: \_\_\_\_\_ CITY CLERK

Attest: \_\_\_\_\_ CHAIRMAN OF THE BOARD  
 \_\_\_\_\_ COUNTY CLERK

Inspected and approved on the 20th day of December, 1970.  
 City Engineer

Inspected and approved on the 26th day of October, 1970.  
 County Surveyor

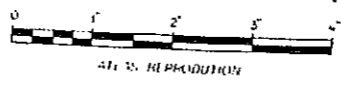
Filed for record in the Office of the County Clerk of Natrona County, Wyoming this 5 day of December, 1970.  
 COUNTY CLERK



CERTIFICATE OF SURVEYOR

STATE OF WYOMING ss  
 COUNTY OF NATRONA ss  
 I, E.C. Lenhart of Casper, Wyoming, do hereby certify that this plat was prepared from notes taken during an actual survey made by me during the month of December, 1969 and that such plat correctly represents such survey and the subdivision "SOUTH GARDEN CREEK ACRES NO. 4" and all Tracts are properly marked and identified, all dimensions are expressed in feet and decimals thereof and all courses referred to the true meridian as determined by direct solar observation; such survey as represented hereon is true and correct to the best of my knowledge and belief.  
 Wyoming Registration No 520 PE. & LS  
 Subscribed in my presence and sworn to before me on this 14th day of December, 1969.  
 My commission expires January, 5th, 1973.  
 Notary Public

PLAT & SURVEY BY  
 WORTHINGTON, LENHART, CARPENTER & LADD, INC.  
 632 SOUTH DAVID STREET, CASPER, WYOMING  
 W.O. 10-30-A9 Date: December 9, 1969  
 Addn. May 18, 1970



Direct Solar lines and chained distances.  
 + Tract corner, 1/8" Rebar/AI cop