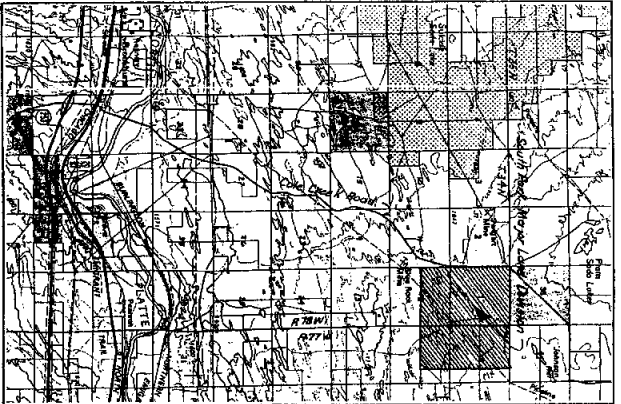
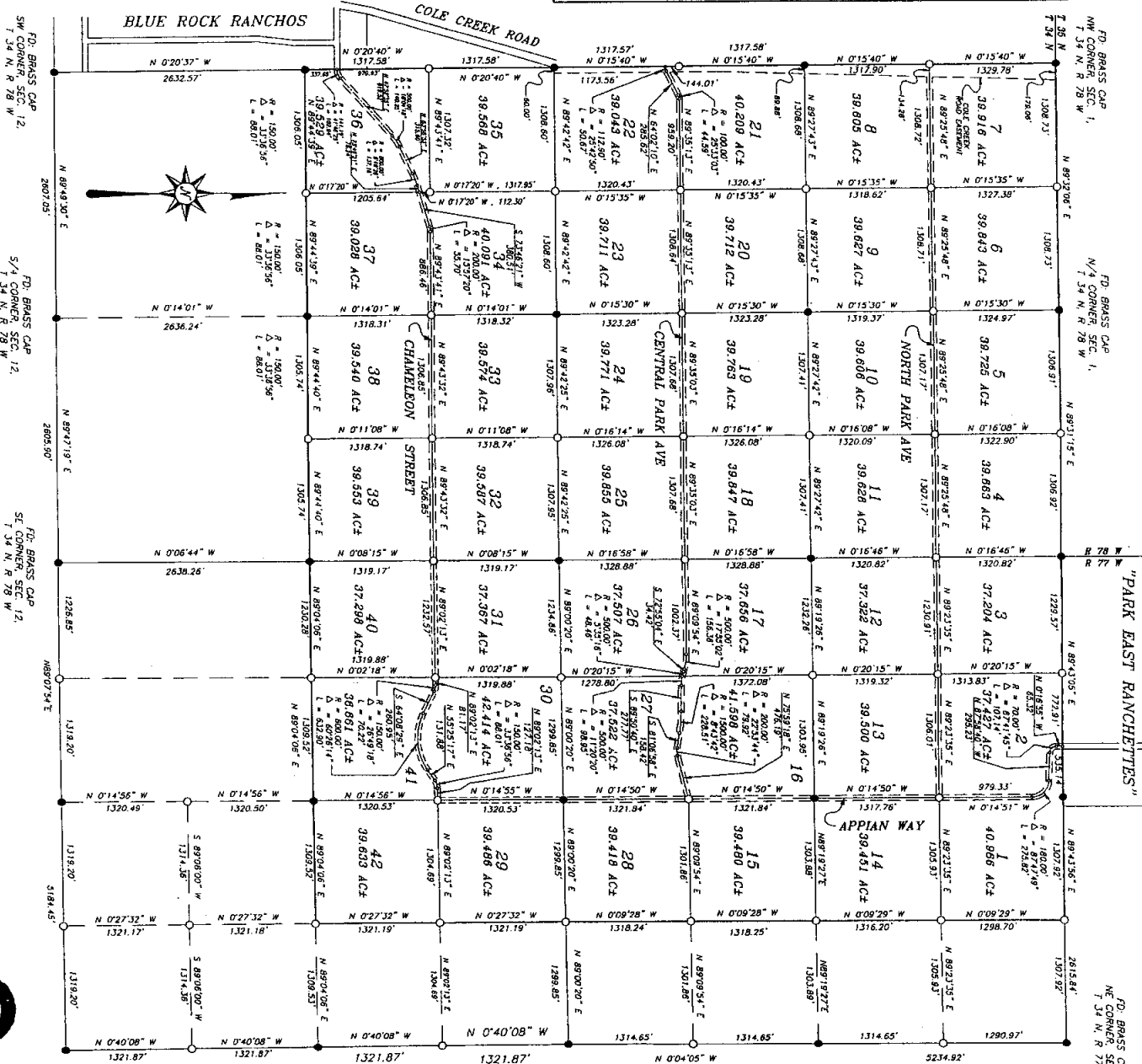


PLAT OF SOUTH PARK MAJOR LAND DIVISION
RECORDED IN PLAT BOOK 64
PAGE 20



NOTES:
● = FOUND OR SET BRASS CAP MONUMENT.
○ = SET REBAR AND CAP THIS SURVEY.
* NO PROPOSED PUBLIC WATER, SEWER OR STORMWATER SYSTEM.
* NO PROPOSED COUNTY MAINTENANCE OF STREETS OR ROADS.
* THE MAJORITY COUNTY COMMISSIONERS SHALL HAVE THE SUBSEQUENT RIGHT TO MAKE ANY OR ALL ACCESS ROAD RIGHTS OF WAY AND COUNTY ROADS, TO BE OPENED TO MEET COUNTY ROAD STANDARDS.
* OWNER DOES HEREBY DENY AND WAIVE A 10' EASEMENT ALONG THE INTERIOR OF ALL LOT LINES FOR THE PURPOSES OF CONSTRUCTION AND LOCATION OF UTILITIES.
* ALL ACCESS EASEMENTS SHALL BE 80' WIDE (100' ON EACH SIDE OF LOT LINE) UNLESS OTHERWISE NOTED ON THE PLAN.
* THIS MAJOR LAND DIVISION IS SUBJECT TO ALL EASEMENTS, AGREEMENTS AND RESTRICTIONS OF RECORD.



APPROVAL:
I, *[Signature]*, County Surveyor/Date



PLAT OF SOUTH PARK MAJOR LAND DIVISION
A DIVISION OF ALL OF SECTION 1, THE N/2 OF SECTION 12, TOWNSHIP 34 NORTH, RANGE 78 WEST AND THE N/2 AND THE N/2 OF THE E/2 OF SECTION 6, THE N/4 AND THE N/2 OF THE N/2 OF SECTION 7, TOWNSHIP 34 NORTH, RANGE 77 WEST OF THE 6TH PRINCIPAL MERIDIAN, NATRONA COUNTY, WYOMING

SUBJECT LAND MAJOR DIVISION FILED HEREIN BEING THE OWNER OF THE N/2 OF SECTION 1, THE N/2 OF SECTION 12, TOWNSHIP 34 NORTH, RANGE 78 WEST AND THE N/2 AND THE N/2 OF THE E/2 OF SECTION 6, THE N/4 AND THE N/2 OF THE N/2 OF SECTION 7, TOWNSHIP 34 NORTH, RANGE 77 WEST OF THE 6TH PRINCIPAL MERIDIAN, NATRONA COUNTY, WYOMING BEING MORE PARTICULARLY DESCRIBED AS FOLLOWS:
BEGINNING AT THE NORTHWEST CORNER OF SAID SECTION 1, THENCE NORTH 89°37'08" WEST 261.83 FEET TO THE NORTHWEST CORNER OF SAID SECTION 12, THENCE NORTH 89°10'57" EAST 201.62 FEET TO THE NORTHWEST CORNER OF SAID SECTION 6, THENCE NORTH 89°43'58" EAST 201.62 FEET TO THE NORTHWEST CORNER OF SAID SECTION 7, THENCE SOUTH 89°29'29" EAST 201.62 FEET TO THE SOUTHWEST CORNER OF SAID SECTION 7, THENCE SOUTH 89°29'29" EAST 201.62 FEET TO THE SOUTHWEST CORNER OF SAID SECTION 6, THENCE SOUTH 89°29'29" EAST 201.62 FEET TO THE SOUTHWEST CORNER OF SAID SECTION 12, THENCE SOUTH 89°29'29" EAST 201.62 FEET TO THE SOUTHWEST CORNER OF SAID SECTION 1, THENCE NORTH 89°29'29" WEST 261.83 FEET TO THE POINT OF BEGINNING.

ACKNOWLEDGMENTS
STATE OF WYOMING) SS
COUNTY OF NATRONA)
I, DANIEL A. SEIK, OF THE COUNTY OF NATRONA, DO HEREBY CERTIFY THAT I, DANIEL A. SEIK, DO HEREBY CERTIFY THAT I PREPARED THIS PLAT FROM AN ACTUAL AND ACCURATE SURVEY AND THAT THE CORNER MONUMENTS SHOWN HEREON WERE PROPERLY PLACED UNDER MY SUPERVISION IN ACCORDANCE WITH THE MAJOR LAND DIVISION REGULATIONS OF NATRONA COUNTY.

ACKNOWLEDGMENTS
STATE OF WYOMING) SS
COUNTY OF NATRONA)
I, DANIEL A. SEIK, OF THE COUNTY OF NATRONA, DO HEREBY CERTIFY THAT I PREPARED THIS PLAT FROM AN ACTUAL AND ACCURATE SURVEY AND THAT THE CORNER MONUMENTS SHOWN HEREON WERE PROPERLY PLACED UNDER MY SUPERVISION IN ACCORDANCE WITH THE MAJOR LAND DIVISION REGULATIONS OF NATRONA COUNTY.

ACKNOWLEDGMENTS
STATE OF WYOMING) SS
COUNTY OF NATRONA)
I, DANIEL A. SEIK, OF THE COUNTY OF NATRONA, DO HEREBY CERTIFY THAT I PREPARED THIS PLAT FROM AN ACTUAL AND ACCURATE SURVEY AND THAT THE CORNER MONUMENTS SHOWN HEREON WERE PROPERLY PLACED UNDER MY SUPERVISION IN ACCORDANCE WITH THE MAJOR LAND DIVISION REGULATIONS OF NATRONA COUNTY.

ACKNOWLEDGMENTS
STATE OF WYOMING) SS
COUNTY OF NATRONA)
I, DANIEL A. SEIK, OF THE COUNTY OF NATRONA, DO HEREBY CERTIFY THAT I PREPARED THIS PLAT FROM AN ACTUAL AND ACCURATE SURVEY AND THAT THE CORNER MONUMENTS SHOWN HEREON WERE PROPERLY PLACED UNDER MY SUPERVISION IN ACCORDANCE WITH THE MAJOR LAND DIVISION REGULATIONS OF NATRONA COUNTY.

ACKNOWLEDGMENTS
STATE OF WYOMING) SS
COUNTY OF NATRONA)
I, DANIEL A. SEIK, OF THE COUNTY OF NATRONA, DO HEREBY CERTIFY THAT I PREPARED THIS PLAT FROM AN ACTUAL AND ACCURATE SURVEY AND THAT THE CORNER MONUMENTS SHOWN HEREON WERE PROPERLY PLACED UNDER MY SUPERVISION IN ACCORDANCE WITH THE MAJOR LAND DIVISION REGULATIONS OF NATRONA COUNTY.

ACKNOWLEDGMENTS
STATE OF WYOMING) SS
COUNTY OF NATRONA)
I, DANIEL A. SEIK, OF THE COUNTY OF NATRONA, DO HEREBY CERTIFY THAT I PREPARED THIS PLAT FROM AN ACTUAL AND ACCURATE SURVEY AND THAT THE CORNER MONUMENTS SHOWN HEREON WERE PROPERLY PLACED UNDER MY SUPERVISION IN ACCORDANCE WITH THE MAJOR LAND DIVISION REGULATIONS OF NATRONA COUNTY.

ACKNOWLEDGMENTS
STATE OF WYOMING) SS
COUNTY OF NATRONA)
I, DANIEL A. SEIK, OF THE COUNTY OF NATRONA, DO HEREBY CERTIFY THAT I PREPARED THIS PLAT FROM AN ACTUAL AND ACCURATE SURVEY AND THAT THE CORNER MONUMENTS SHOWN HEREON WERE PROPERLY PLACED UNDER MY SUPERVISION IN ACCORDANCE WITH THE MAJOR LAND DIVISION REGULATIONS OF NATRONA COUNTY.

ACKNOWLEDGMENTS
STATE OF WYOMING) SS
COUNTY OF NATRONA)
I, DANIEL A. SEIK, OF THE COUNTY OF NATRONA, DO HEREBY CERTIFY THAT I PREPARED THIS PLAT FROM AN ACTUAL AND ACCURATE SURVEY AND THAT THE CORNER MONUMENTS SHOWN HEREON WERE PROPERLY PLACED UNDER MY SUPERVISION IN ACCORDANCE WITH THE MAJOR LAND DIVISION REGULATIONS OF NATRONA COUNTY.

ACKNOWLEDGMENTS
STATE OF WYOMING) SS
COUNTY OF NATRONA)
I, DANIEL A. SEIK, OF THE COUNTY OF NATRONA, DO HEREBY CERTIFY THAT I PREPARED THIS PLAT FROM AN ACTUAL AND ACCURATE SURVEY AND THAT THE CORNER MONUMENTS SHOWN HEREON WERE PROPERLY PLACED UNDER MY SUPERVISION IN ACCORDANCE WITH THE MAJOR LAND DIVISION REGULATIONS OF NATRONA COUNTY.

ACKNOWLEDGMENTS
STATE OF WYOMING) SS
COUNTY OF NATRONA)
I, DANIEL A. SEIK, OF THE COUNTY OF NATRONA, DO HEREBY CERTIFY THAT I PREPARED THIS PLAT FROM AN ACTUAL AND ACCURATE SURVEY AND THAT THE CORNER MONUMENTS SHOWN HEREON WERE PROPERLY PLACED UNDER MY SUPERVISION IN ACCORDANCE WITH THE MAJOR LAND DIVISION REGULATIONS OF NATRONA COUNTY.

ACKNOWLEDGMENTS
STATE OF WYOMING) SS
COUNTY OF NATRONA)
I, DANIEL A. SEIK, OF THE COUNTY OF NATRONA, DO HEREBY CERTIFY THAT I PREPARED THIS PLAT FROM AN ACTUAL AND ACCURATE SURVEY AND THAT THE CORNER MONUMENTS SHOWN HEREON WERE PROPERLY PLACED UNDER MY SUPERVISION IN ACCORDANCE WITH THE MAJOR LAND DIVISION REGULATIONS OF NATRONA COUNTY.

PREPARED BY SEIK SURVEYING SERVICE, CASPER, WYOMING, 307-266-8899 JOB NO. 11-02

APPROVAL:
I, *[Signature]*, County Surveyor/Date

