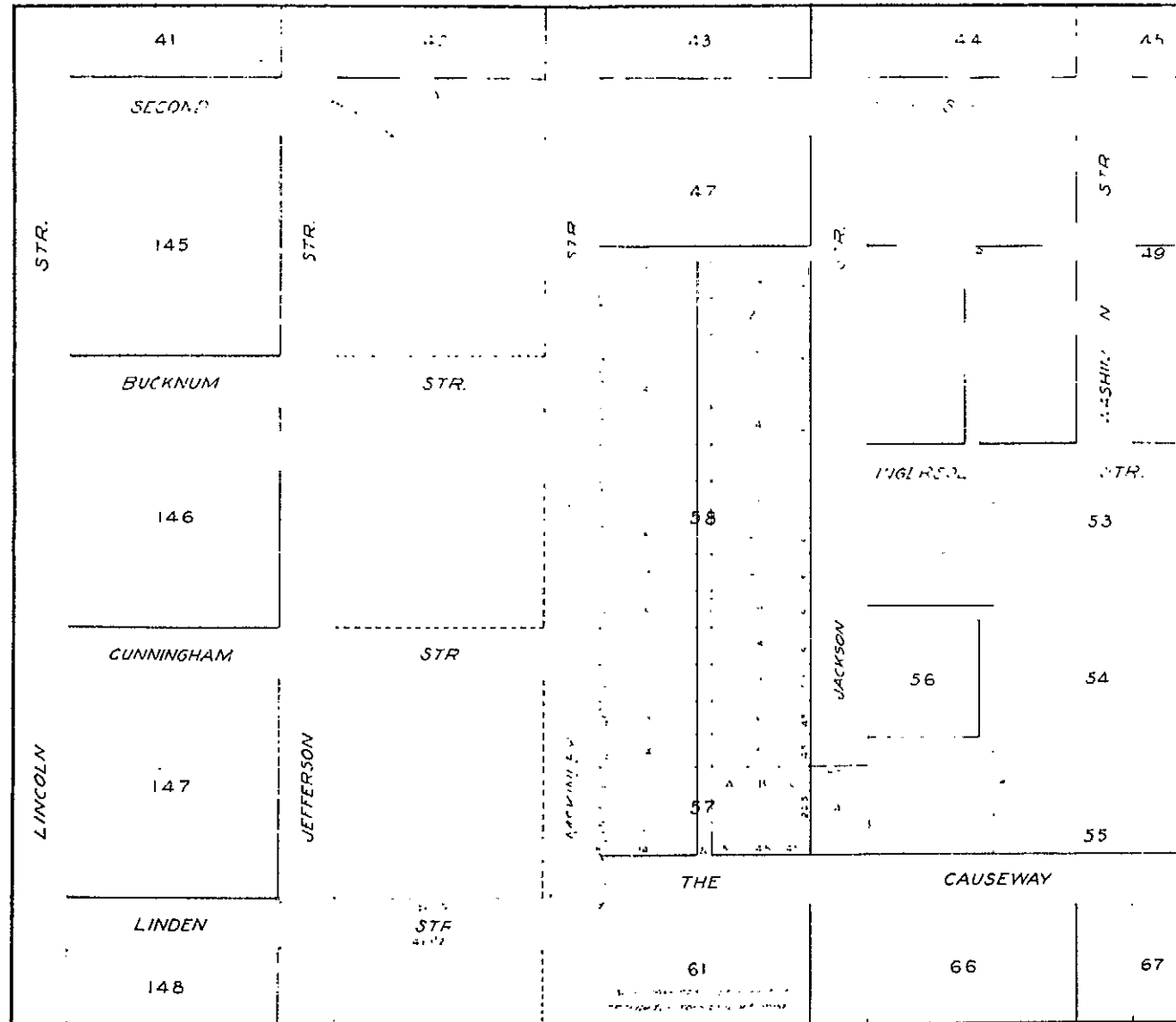


21/557

Sheet 12
Floor 3



SPEARS' SUBDIVISION
 OF WHITE'S ADDITION
 BLOCK 58 of Lot 3 BLOCK 5
 except the West 20 feet
CITY OF CASPER
 NATRONA COUNTY WYOMING
 Scale: 1 Inch = 100 Feet

STATE OF WYOMING
 I, the undersigned, County Clerk of Natrona County, Wyoming, do hereby certify that the foregoing is a true and correct copy of the original record of the same as the same appears in the office of the County Clerk of Natrona County, Wyoming, this 14th day of June, 1914.

Wm. H. McCall
 County Clerk

WITNESSED my hand and the seal of said County at Casper, Wyoming, this 14th day of June, 1914.

Wm. H. McCall
 County Clerk

16th & Street

