

2066 #1

STUCKENHOFF ADDITION 2066  
Instrument #629751  
Recorded February 18, 1999

629751

CITY CLERK, WY  
ANN COLLINS  
RECORDED

99 FEB 18 PM 3 16

CERTIFICATE OF SURVEYOR

STATE OF WYOMING )  
COUNTY OF JOHNSON )  
I, Robert G. Stuckert of Buffalo, Wyoming do hereby certify that this plat was made from notes taken during an actual survey made through the 31st of July, 1998 and that this plat correctly represents the boundaries and easements found in the field and on record in the Natrona County Clerk's Office.  
Wyoming Registration No. 324 L.S.

Subscribed in my presence and sworn to before me at Buffalo, Wyoming on this 15th day of February, 1999.  
My commission expires \_\_\_\_\_  
Notary Public

[Signature]

R.G. STUCKERT & ASSOCIATES, INC.  
415 CONRAD  
BUFFALO, WYOMING 82834

CERTIFICATE OF DEDICATION

The City of Casper, Wyoming, a Municipal Corporation, hereby certifies that it is the owner and proprietor of the foregoing subdivision located in all of Sections 23 and 24, north half of Section 26 and being portions of the south half of Section 26, Township 34 North, Range 79 West of the sixth Principal Meridian, Natrona County, Wyoming and being more particularly described by metes and bounds as follows:

Beginning at a point on the west line of Section 26, T.34 N., R.79 W. 6th P.M. Wyoming bearing N.01 51'22"W, a distance of 286.52 feet from the south west corner of said Section 26; Thence N.01 51'22"W, a distance of 2338.84 to the west quarter corner of section 26; Thence N.01 49'25"W, a distance of 2622.92 feet to the northwest corner of section 26; Thence N.00 35'52"W, a distance of 1312.44, to the south sixteenth corner between sections 22 and 23; thence N.00 35'25"W, a distance of 1311.31 feet to the west quarter corner of section 23; Thence N.01 19'58"W, a distance of 1285.96 feet to the north sixteenth corner between sections 22 and 23; Thence N.01 18'48"W, a distance of 1285.85 feet to the northwest corner of section 23; Thence N.89 10'45"E, a distance of 1305.35 feet to the west sixteenth corner between sections 14 and 23; Thence N.89 11'15"E, a distance of 1311.24 feet to the north quarter corner of section 23; Thence N.89 11'15"E, a distance of 2622.49 feet to the northeast corner of section 23; Thence N.88 39'22"E, a distance of 1338.93 feet to the west sixteenth corner between sections 13 and 24; Thence N.88 42'13"E, a distance of 1337.92 feet to the north quarter corner of section 24; Thence N.88 40'55"E, a distance of 1337.59 feet to the east sixteenth corner between sections 13 and 24; Thence N.88 40'34"E, a distance of 1336.74 feet to the northeast corner of section 24; Thence S.01 12'44"E, a distance of 2630.95 feet to the east quarter corner of section 24; Thence S.01 17'57"E, a distance of 2629.83 feet to the southeast corner of section 24; Thence S.88 57'36"W, a distance of 2684.40 feet to the south quarter corner of section 24; Thence S.88 56'09"W, a distance of 2673.07 feet to the southwest corner of section 24; Thence S.01 52'30"E, a distance of 2610.36 feet to east quarter corner of section 26; Thence S.89 26'57"W, a distance of 2629.85 feet to the center quarter of section 26; Thence S.02 01'30"E, a distance of 2616.36 feet to the south quarter corner of section 26; Thence S.89 19'20"W, a distance of 2540.22 feet to a point intersecting the existing east line of the city limits; Thence N.00 42'38"E, along the east line of the city limits a distance of 288.98 feet to a point; Thence S.88 05'12"W, along the north line of the city limits a distance of 112.95 feet to the point of beginning containing 1746.492 acres.

Horizontal Traverse Closures of Unadjusted Observations Beginning and Ending on ADJUSTED STATIONS

Table with columns: From, To, Used Bearing, Used Dist, Misclosures. Includes traverse data for 2093, 2090, 101, 108, 106, 107, 108.

BASIS OF SURVEY IS BASED ON PRIMARY CONTROL POINTS 1991 GPS SURVEY BY MERRICK AND COMPANY.  
BASELINE FOR SURVEY WAS BETWEEN POINT NO. 2080 DESIGNATION 91-1 AND 2093 DESIGNATION #5  
MAJOR CONTROL NETWORK CLOSURE 1:299783  
SIDE SHOT TO CORNERS CHECKED WITH GPS WITH A STANDARD DEVIATION OF .067 FEET.

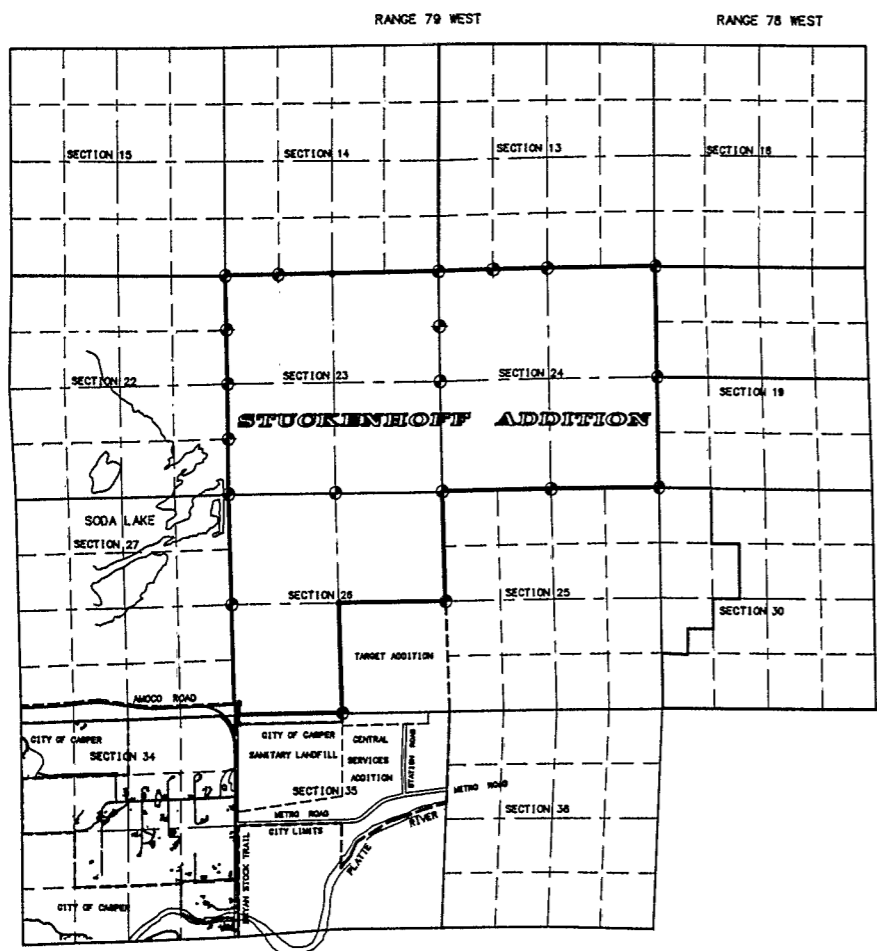
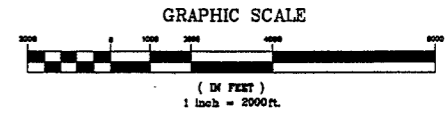
LEGEND

- Symbol: B.L.M. LAND OFFICE BRASS CAPS
Symbol: BRASS CAP SET BY P.E. & L.S. NO. 632
Symbol: BRASS CAP SET BY L.S. NO. 324
Symbol: SECTION LINES MARKING ADDITION BOUNDARY
Symbol: INTERIOR SECTION LINES
Symbol: OWNERSHIP LINES
Symbol: CITY LIMITS

The subdivision of the foregoing described lands as appears on this plat is with the free consent and in accordance with the above named owner and proprietor. The name of said subdivision shall be "STUCKENHOFF" addition to the City of Casper.

CITY OF CASPER, WYOMING  
a Municipal Corporation  
200 North David Street  
Casper, Wyoming 82601  
[Signature]  
ATTEST: CITY CLERK

[Signature]  
MAYOR



LOCATION & VICINITY MAP

APPROVALS

APPROVED: Community Planning Commission of Casper, Wyoming this 15th day of December, 1998, and forwarded to the City Council of Casper, Wyoming with recommendation that said Plat be approved.  
[Signature] SECRETARY  
[Signature] COMMISSION CHAIRMAN

APPROVED: City Council of the City of Casper, Wyoming by Ordinance No. 26-99 Passed, adopted and approved on the 15th day of December, 1998

Attest: [Signature] CITY CLERK  
[Signature] MAYOR

INSPECTED AND APPROVED on the 1st day of June, 1998

[Signature] CITY ENGINEER

INSPECTED AND APPROVED on the 8th day of February, 1999

[Signature] COUNTY SURVEYOR

PLAT OF  
STUCKENHOFF ADDITION

TO THE CITY OF CASPER

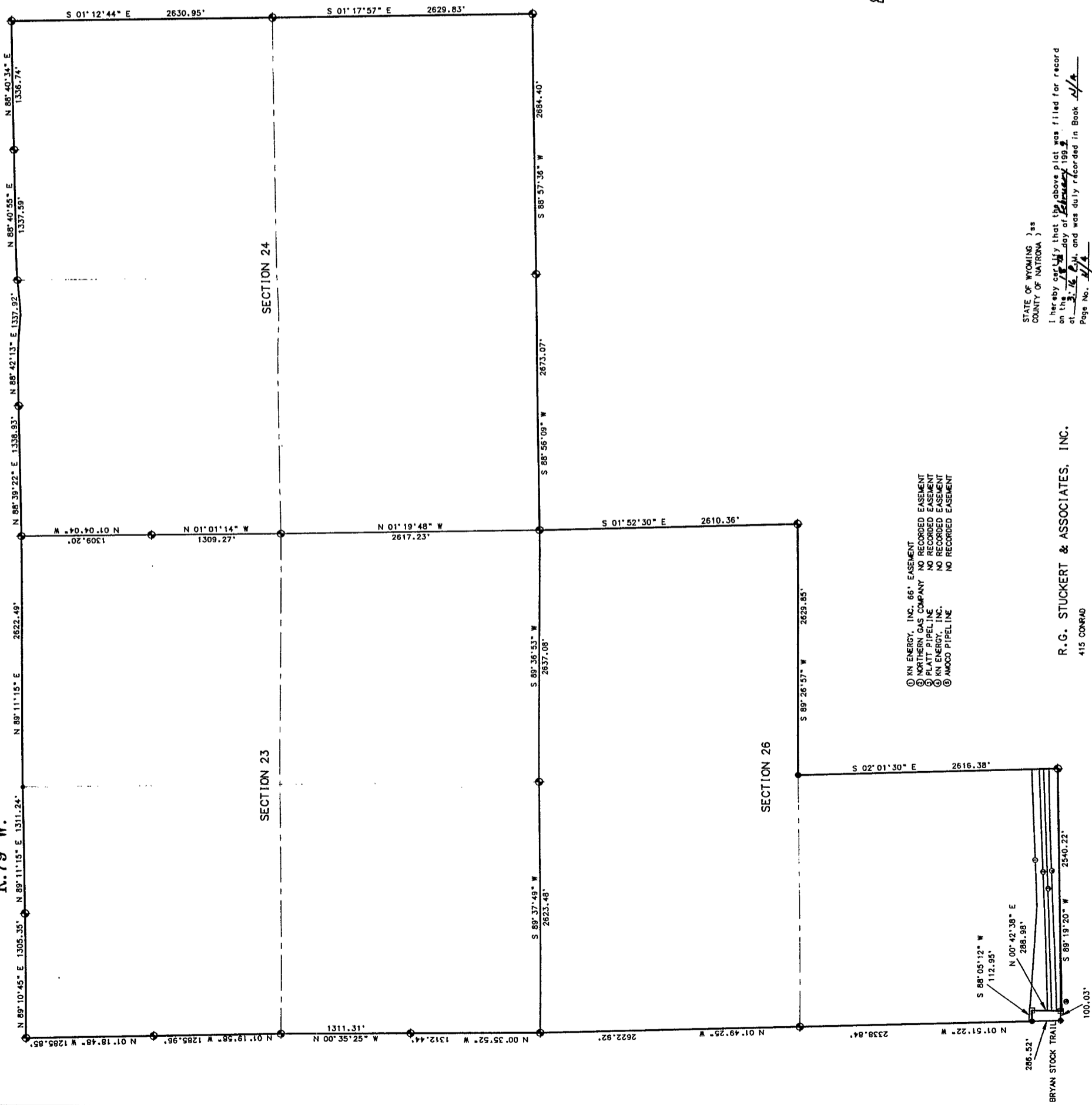
A SUBDIVISION OF

ALL OF SECTIONS 23 AND 24, N1/2 OF SECTION 26 AND  
THE PORTIONS OF THE SW1/4 SECTION 26  
TOWNSHIP 34 NORTH, RANGE 79 WEST  
6TH PRINCIPAL MERIDIAN  
NATRONA COUNTY, WYOMING

STATE OF WYOMING )  
COUNTY OF NATRONA )  
I hereby certify that the above plat was filed for record on the 17th day of February, 1999 at 3:16 P.M. and was duly recorded in Book 629751

2066 #2

R.79 W. T.34 N.



**CERTIFICATE OF SURVEYOR**

STATE OF WYOMING )  
 COUNTY OF NATRONA ) ss  
 I, Robert G. Stuckert of Buffalo, Wyoming do hereby certify that this plat was made from notes taken during an actual survey made by me through the 31st of July, 1998 and that this plat correctly represents the boundary and easements found in the field and on record in the Natrona County Plat Book No. 2066, Wyoming Registration No. 324 L.S.  
 My commission expires: 12/31/2000  
 NOTARY PUBLIC

**PLAT OF  
 STUCKERTHOFF ADDITION  
 TO THE CITY OF CASPER  
 A SUBDIVISION OF**

ALL OF SECTIONS 23 AND 24, N1/2 OF SECTION 26 AND THE PORTIONS OF THE SW1/4 SECTION 26 TOWNSHIP 34 NORTH, RANGE 79 WEST 6TH PRINCIPAL MERIDIAN NATRONA COUNTY, WYOMING

STATE OF WYOMING )  
 COUNTY OF NATRONA )  
 I hereby certify that the above plat was filed for record on this 17th day of February 1998 at 3:16 P.M. and was duly recorded in Book 2066 Page No. 2/4

R.G. STUCKERT & ASSOCIATES, INC.  
 415 CONRAD  
 BUFFALO, WYOMING 82834