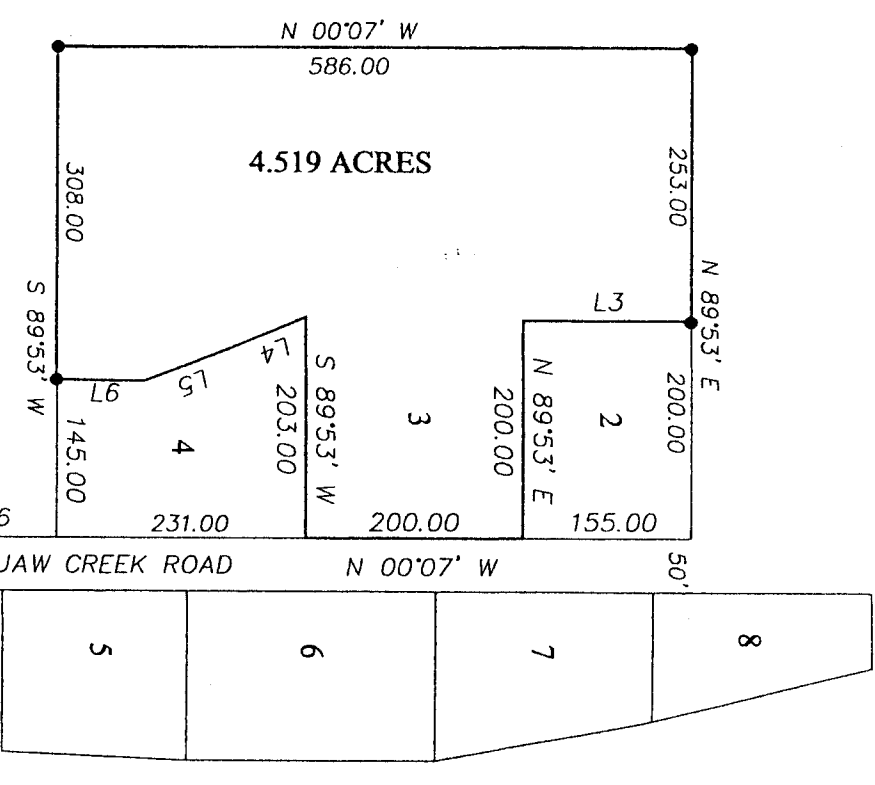
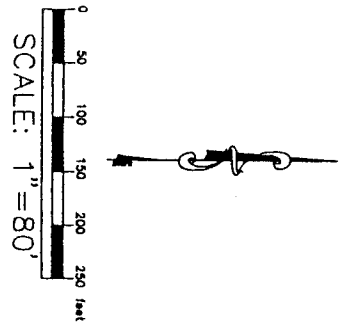


LEGEND
 ● SET 5/8" REBAR W/AL CAP
 ○ RECOVERED 1 INCH IRON PIN

PLAT CLOSURE RATIO: 1:25.990



- LINE TABLE
- L1 = S. 89° 58' W., 26.00'
 - L2 = N. 89° 58' E., 24.00'
 - L3 = S. 00° 07' E., 155.00'
 - L4 = S. 22° 37' E., 75.77'
 - L5 = S. 20° 41' E., 85.44'
 - L6 = S. 00° 40' W., 81.00'



CERTIFICATE OF SURVEYOR

STATE OF WYOMING)
 COUNTY OF NATRONA) ss.

I, William G. Ladd of Casper, Wyoming hereby state that this plat was prepared from notes taken during an actual survey in August of 2001 and that this plat correctly represents said survey. All dimensions are expressed in feet and decimals thereof. Courses are referred to the east line of said Lot 3. All corners are well and accurately monumented as of the date of this plat.

William G. Ladd
 WYOMING REGISTRATION NO. 519, P.E. & L.S.

Subscribed in my presence and sworn to before me by William G. Ladd this 31 day of May, 2002.

Witness my hand and official seal: *William G. Ladd*
 Notary Public

My commission expires: Aug 14, 2005

Filed for Record in the Office of the County Clerk of Natrona County this 30 day of July, 2002.

My term of office expires January 6, 2003



Wendy Coen
 County Clerk

PLAT OF
 LOT 3
 A REPLAT OF
 LOT 3, TAVARES HOMES SUBDIVISION
 T. 33 N., R. 80 W., 6th PRINCIPAL MERIDIAN
 NATRONA COUNTY, WYOMING
 SCALE 1" = 80'

CERTIFICATE OF DEDICATION

Bill Hawks and Jan G. Hawks, a husband and wife, hereby certify that they are the owners and proprietors of the foregoing lands located in and being a portion of the SE 1/4 NW 1/4 Section 25, T. 33 N., R. 80 W., 6th P. M., Natrona County, Wyoming and being more particularly described as follows:

Commencing at the Center 1/4 corner of said Section 25; thence S. 89° 58' W., 26.00 feet; thence N. 07° W., 147.6 feet to the SE corner of Lot 4, Tavares Homes Subdivision; thence S. 89° 53' W., 145.00 feet to the SW corner of said Lot 4 and the point of beginning; thence N. 07° W., 50.00 feet to the NW corner of said replated Lot 3; thence N. 89° 53' E., 253.00 feet to the NE corner of said replated Lot 3 and the NW corner of Lot 2, said Tavares Homes Subdivision; thence S. 07° E., 155.00 feet to the SW corner of said Lot 2; thence N. 89° 53' E., 200.00 feet to SE corner of said Lot 2 and the NE corner of original Lot 3; thence S. 07° E., 200.00 feet to the SE corner of original Lot 3 and the NE corner of Lot 4, said Tavares Homes Subdivision; thence S. 89° 53' W., 203.00 feet to the SW corner of original Lot 3 and the NW corner of said Lot 4; thence S. 22° 37' E., 75.77 feet; thence S. 20° 41' E., 85.44 feet; thence S. 07° 40' W., 81.00 feet to the SW corner of said Lot 4 and the point of beginning and containing 4.519 acres, more or less.

The subdivision of the above described land is with the free consent and in accordance with the desires of the above named owner and proprietor; the roads shown hereon are previously dedicated County Roads. The name of said subdivision shall be known as Lot 3, Tavares Homes, a replat of Lot 3, Tavares Homes, Natrona County, Wyoming.

ACKNOWLEDGEMENT

State of Wyoming)
 County of Natrona) ss.

The foregoing instrument was acknowledged before me by Bill Hawks and Jan G. Hawks this 17 day of June, 2002.

Witness my hand and official seal: *William G. Ladd*
 Notary Public

My commission expires Aug 14, 2005

APPROVALS

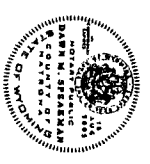
APPROVED: Board of County Commissioners of Natrona County, Wyoming by Resolution duly passed on the 7 day of May, 2002.

Attest: *Wendy Coen*
 County Clerk

INSPECTED AND APPROVED on the 13th day of June, 2002.

INSPECTED AND APPROVED on the 12th day of June, 2002.

INSPECTED AND APPROVED on the 14th day of June, 2002.



Bill Hawks
 Bill Hawks
Jan G. Hawks
 Jan G. Hawks

Wendy Coen
 Wendy Coen
 County Clerk

William G. Ladd
 William G. Ladd
 Notary Public

Wendy Coen
 Wendy Coen
 County Clerk

Wendy Coen
 Wendy Coen
 County Clerk

LOT 3, A REPLAT OF LOT 3, TAVARES HOMES SUBDIVISION, July 2, 2002

#2111