



**SOUTH BOUNDARY PLAT**  
**TEXACO STAR BUSINESS PARK**  
**NATRONA COUNTY, WYOMING**

Trihydro  
12345 Commerce Drive  
Natrona, Wyoming 82400  
PH: 307.733.7777  
WWW.TRIHYDRO.COM

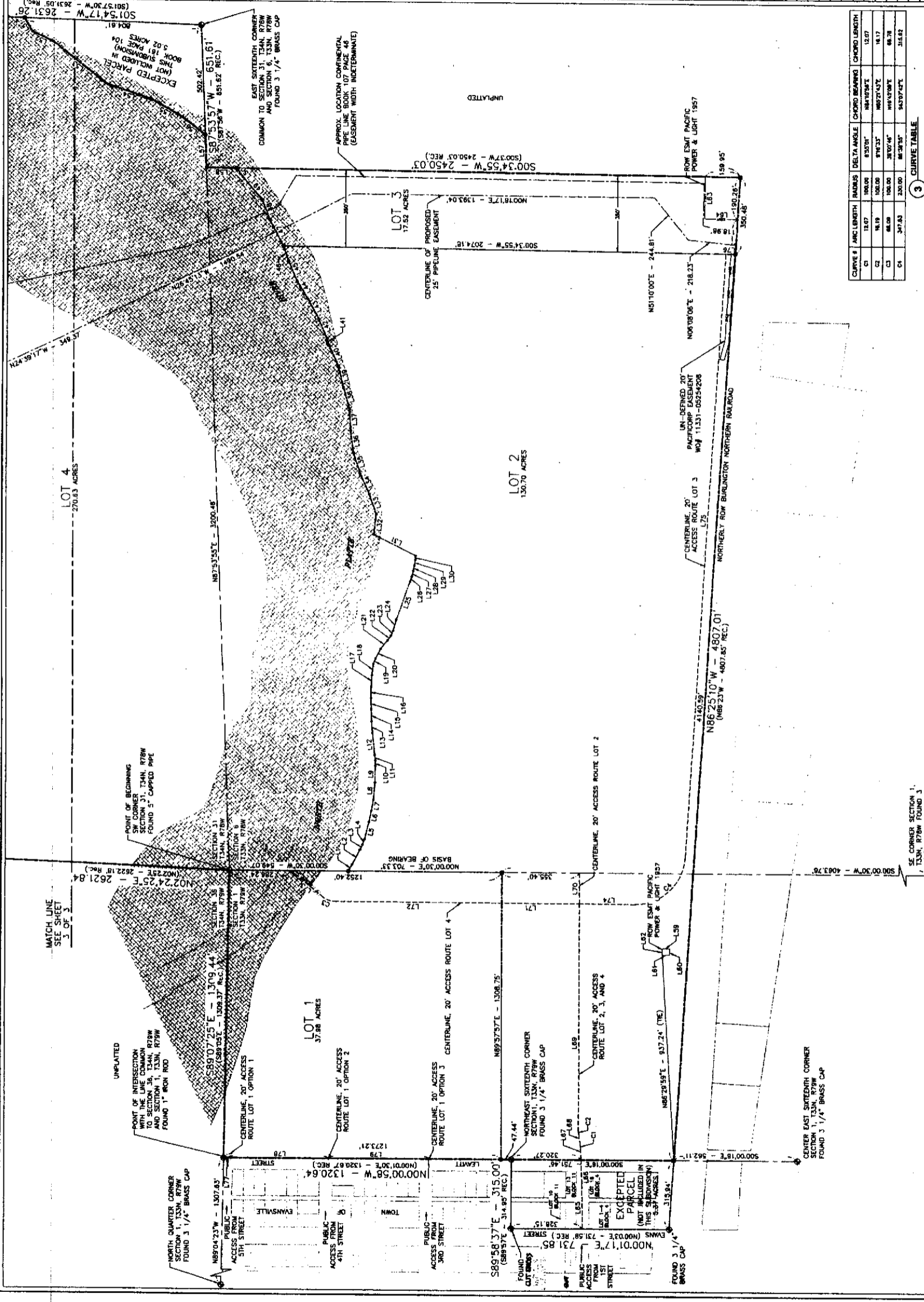
DRAWN BY: CJM  
CHECKED BY: PK  
DATE: 2/19/2013  
SCALE: 1" = 200'  
IF THIS BAR DOES NOT  
MEASURE 1" IN LENGTH  
THEN DRAWING IS NOT  
AT INTENDED SCALE

WARNING  
IF THIS BAR DOES NOT  
MEASURE 1" IN LENGTH  
THEN DRAWING IS NOT  
AT INTENDED SCALE

REV	DATE	DESCRIPTION
4	2/15/2013	FINAL SUBMITTAL
3	1/16/2013	RE-ISSUE FOR DRAFT SUBMITTAL
2	11/21/12	RE-ISSUE FOR DRAFT SUBMITTAL
1	10/22/12	ISSUE FOR DRAFT SUBMITTAL

2

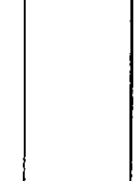
LINE NO	BEARING	DISTANCE
L1	S89°58'37"E	315.00
L2	S89°58'37"E	315.00
L3	S89°58'37"E	315.00
L4	S89°58'37"E	315.00
L5	S89°58'37"E	315.00
L6	S89°58'37"E	315.00
L7	S89°58'37"E	315.00
L8	S89°58'37"E	315.00
L9	S89°58'37"E	315.00
L10	S89°58'37"E	315.00
L11	S89°58'37"E	315.00
L12	S89°58'37"E	315.00
L13	S89°58'37"E	315.00
L14	S89°58'37"E	315.00
L15	S89°58'37"E	315.00
L16	S89°58'37"E	315.00
L17	S89°58'37"E	315.00
L18	S89°58'37"E	315.00
L19	S89°58'37"E	315.00
L20	S89°58'37"E	315.00
L21	S89°58'37"E	315.00
L22	S89°58'37"E	315.00
L23	S89°58'37"E	315.00
L24	S89°58'37"E	315.00
L25	S89°58'37"E	315.00
L26	S89°58'37"E	315.00
L27	S89°58'37"E	315.00
L28	S89°58'37"E	315.00
L29	S89°58'37"E	315.00
L30	S89°58'37"E	315.00
L31	S89°58'37"E	315.00
L32	S89°58'37"E	315.00
L33	S89°58'37"E	315.00
L34	S89°58'37"E	315.00
L35	S89°58'37"E	315.00
L36	S89°58'37"E	315.00
L37	S89°58'37"E	315.00
L38	S89°58'37"E	315.00
L39	S89°58'37"E	315.00
L40	S89°58'37"E	315.00
L41	S89°58'37"E	315.00
L42	S89°58'37"E	315.00
L43	S89°58'37"E	315.00
L44	S89°58'37"E	315.00
L45	S89°58'37"E	315.00
L46	S89°58'37"E	315.00
L47	S89°58'37"E	315.00
L48	S89°58'37"E	315.00
L49	S89°58'37"E	315.00
L50	S89°58'37"E	315.00
L51	S89°58'37"E	315.00
L52	S89°58'37"E	315.00
L53	S89°58'37"E	315.00
L54	S89°58'37"E	315.00
L55	S89°58'37"E	315.00
L56	S89°58'37"E	315.00
L57	S89°58'37"E	315.00
L58	S89°58'37"E	315.00
L59	S89°58'37"E	315.00
L60	S89°58'37"E	315.00
L61	S89°58'37"E	315.00
L62	S89°58'37"E	315.00
L63	S89°58'37"E	315.00
L64	S89°58'37"E	315.00
L65	S89°58'37"E	315.00
L66	S89°58'37"E	315.00
L67	S89°58'37"E	315.00
L68	S89°58'37"E	315.00
L69	S89°58'37"E	315.00
L70	S89°58'37"E	315.00
L71	S89°58'37"E	315.00
L72	S89°58'37"E	315.00
L73	S89°58'37"E	315.00
L74	S89°58'37"E	315.00
L75	S89°58'37"E	315.00
L76	S89°58'37"E	315.00
L77	S89°58'37"E	315.00
L78	S89°58'37"E	315.00
L79	S89°58'37"E	315.00
L80	S89°58'37"E	315.00
L81	S89°58'37"E	315.00
L82	S89°58'37"E	315.00
L83	S89°58'37"E	315.00
L84	S89°58'37"E	315.00
L85	S89°58'37"E	315.00
L86	S89°58'37"E	315.00
L87	S89°58'37"E	315.00
L88	S89°58'37"E	315.00
L89	S89°58'37"E	315.00
L90	S89°58'37"E	315.00
L91	S89°58'37"E	315.00
L92	S89°58'37"E	315.00
L93	S89°58'37"E	315.00
L94	S89°58'37"E	315.00
L95	S89°58'37"E	315.00
L96	S89°58'37"E	315.00
L97	S89°58'37"E	315.00
L98	S89°58'37"E	315.00
L99	S89°58'37"E	315.00
L100	S89°58'37"E	315.00



3

CURVE #	ARC LENGTH	RADIUS	DELTA ANGLE	CHORD BEARING	CHORD LENGTH
C1	15.07	100.00	83.50°	N41°24'51\"/>	

NOTE:  
ALL ROADS ARE PRIVATE. ACCESS LICENSES  
WILL BE GRANTED TO NEW OWNERS UPON  
THE COMMENCEMENT OF A SALE IF NECESSARY.



1 PLAN VIEW  
SCALE: 1" = 200'

UNPLATTED

UNPLATTED

UNPLATTED

UNPLATTED

UNPLATTED

UNPLATTED

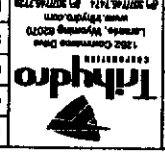
UNPLATTED

UNPLATTED

UNPLATTED

UNPLATTED

**TATECO STAR BUSINESS PARK  
NORTH BOUNDARY PLAT**  
NATRONA COUNTY, WYOMING



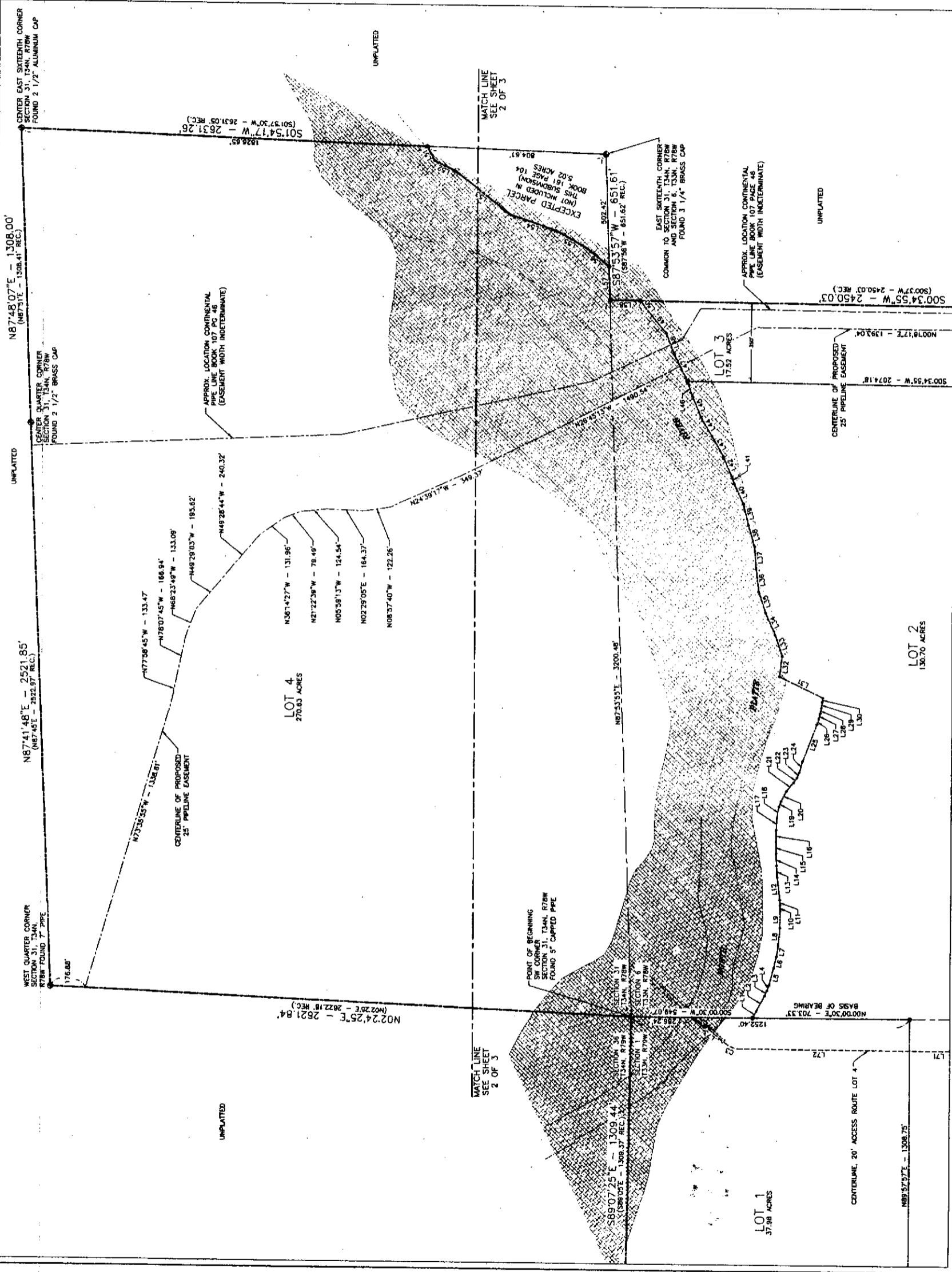
FILE: 200.BOUNDARYPLAT201209  
SCALE: 1" = 200'  
DATE: 2/19/2013  
CHECKED BY: PK  
DRAWN BY: CJM

REV	DATE	DESCRIPTION
4	2/15/2013	FINAL SUBMITTAL
3	1/16/2013	RE ISSUE FOR DRAFT SUBMITTAL
2	12/11/12	RE ISSUE FOR DRAFT SUBMITTAL
1	11/30/12	ISSUE FOR PRELIMINARY SUBMITTAL
0	10/02/2012	ISSUE FOR PRELIMINARY SUBMITTAL

**NOTE:**  
ALL RIGHTS ARE PRIVATE. ACCESS LICENSES  
WILL BE GRANTED TO NEW OWNERS UPON  
THE COMMENCEMENT OF A SALE IF NECESSARY.

2 LINE TABLE

LINE NO.	BEARING	DISTANCE
L1	S80°20'30"E	33.80
L2	S43°07'21"E	71.70
L3	S81°00'17"E	22.38
L4	S66°48'01"E	26.39
L5	S72°38'44"E	76.42
L6	S78°39'08"E	54.66
L7	S82°21'11"E	88.74
L8	S88°07'06"E	76.80
L9	S88°07'06"E	76.78
L10	S87°55'30"E	26.37
L11	S88°18'14"E	26.37
L12	S87°30'30"E	101.81
L13	S88°47'46"E	82.11
L14	S87°23'57"E	53.30
L15	S88°57'45"E	61.82
L16	S88°54'17"E	92.28
L17	S88°36'20"E	92.14
L18	S81°06'15"E	91.82
L19	S86°05'41"E	26.25
L20	S82°20'24"E	60.08
L21	S50°49'22"E	91.32
L22	S55°33'07"E	28.11
L23	S63°35'28"E	24.84
L24	S74°18'07"E	52.64
L25	S84°51'18"E	182.27
L26	S73°41'46"E	26.28
L27	S73°30'44"E	26.80
L28	S72°22'30"E	26.88
L29	S81°30'51"E	76.48
L30	S84°03'50"E	18.18
L31	N03°10'28"E	213.75
L32	S85°20'32"E	82.32
L33	N70°37'22"E	100.01
L34	S85°18'54"E	100.30
L35	N72°03'01"E	100.16
L36	S87°38'51"E	100.48
L37	S88°44'11"E	100.19
L38	N79°40'02"E	100.08
L39	N74°05'51"E	100.23
L40	S84°37'31"E	100.18
L41	N72°17'27"E	26.17
L42	S88°24'00"E	100.13
L43	S87°22'18"E	100.37
L44	S85°28'34"E	100.00
L45	S87°31'52"E	100.37
L46	N79°38'37"E	87.78
L47	S87°48'58"E	132.38
L48	S88°35'32"E	100.38
L49	S88°22'46"E	100.42
L50	S81°24'18"E	64.82
L51	S81°24'55"W	76.40
L52	S35°14'54"W	108.32
L53	S37°07'22"W	314.02
L54	S78°53'57"E	213.33
L55	S59°44'48"W	158.83
L56	S38°12'36"W	131.85
L57	S87°32'50"E	148.20
L58	S60°34'56"W	138.82
L59	S80°18'08"W	33.80
L60	S88°23'00"W	32.00
L61	S88°07'49"E	32.70
L62	S88°14'00"E	30.00
L63	S88°23'00"E	100.00
L64	S87°32'00"E	186.00
L65	S88°04'00"E	208.30
L66	S87°38'27"E	108.45
L67	S87°38'27"E	58.41
L68	S88°42'28"E	51.07
L69	S88°39'54"E	101.86
L70	S88°58'58"E	111.77
L71	S88°11'46"E	118.81
L72	S88°11'46"E	118.81
L73	S87°12'32"E	185.88
L74	S88°11'46"E	258.23
L75	S88°27'08"E	278.53
L76	S87°42'52"E	48.72
L77	S88°00'38"E	21.72
L78	S88°00'38"E	460.35
L79	S88°00'38"E	461.16



1 PLAN VIEW  
SCALE: 1" = 200'

