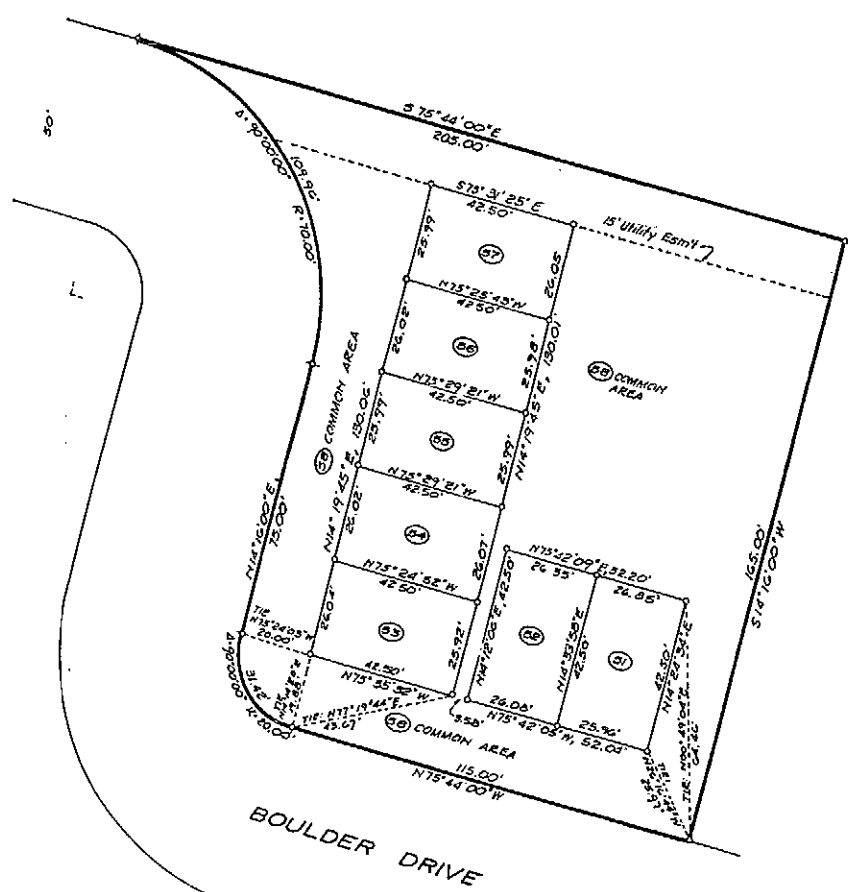


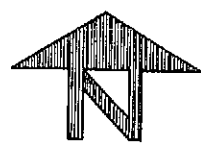
317249

2159

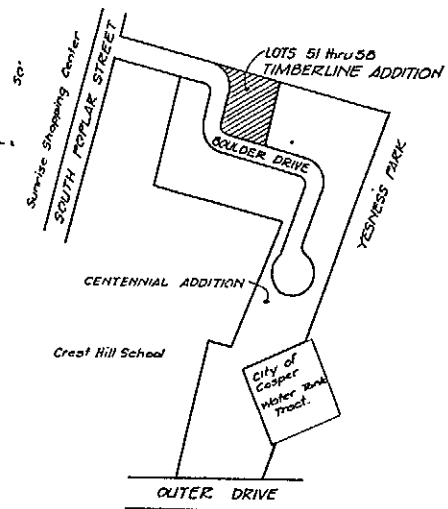


DETAIL MAP

SCALE: 1" = 20'



PLAT PREPARED BY
WOLZ & ASSOCIATES, INC. 933 W. 14th St. Casper, Wyo.
 DATED: May 22, 1980.



LOCATION MAP

SCALE: 1" = 200'

VACATION AND REPLAT
 OF LOT 12, CENTENNIAL ADDITION
 AS LOTS 51 thru 58-TIMBERLINE ADDITION

RECORDED IN BOOK 12, PAGE 12155
 COUNTY OF NATRONA, WYOMING

(Lots 51 thru 58) TIMBERLINE ADDN.
 2155
 RECORDED AUGUST 12, 1981
 INSTRUMENT #317249

A SUBDIVISION IN THE SE 1/4 OF SECTION 20, T33N, R79W, 6th P.M.
 CITY OF CASPER, NATRONA COUNTY, WYOMING

CERTIFICATION OF VACATION AND SUBDIVISION:

STATE OF WYOMING } SS
 COUNTY OF NATRONA }
 The undersigned, Michael D. Zwickl, of Casper, Wyoming, does hereby certify that he is the owner and proprietor of this tract of land in the City of Casper in the SE 1/4 of Section 20, T33N, R79W, 6th PM, Natrona County, Wyoming, more particularly described as follows: Lot 12 of the Centennial Addition to the City of Casper, Natrona County, Wyoming; that he does hereby vacate the above described portion of the subdivision addition as filed for record in the Office of the County Clerk of Natrona County, Wyoming, at Page 286, Book 276; that he does hereby subdivide the above described lands into 8 lots as shown on this plat; that the name of the subdivision shall be "Lots 51 through 58, TIMBERLINE ADDITION TO THE CITY OF CASPER, NATRONA COUNTY, WYOMING"; that he does hereby dedicate to the public and private utility companies easements as shown on this plat for the installation and maintenance of utilities; that the vacation and subdivision is made with the free consent and desire of the undersigned owner and proprietor of said lands. Lot 58 is reserved as common ground for the free access of the residents, employees, and guests of Lots 51 thru 57.

Michael D. Zwickl
 135 N. Ash, Casper, Wyo.
 The foregoing certificate was acknowledged before me by Michael D. Zwickl, this 21 day of January, 1981.
 Witness my hand and Official Seal
 My Commission Expires 12/4/82.

Notary Public
 Betty B. Jonstaker
 Notary Public

CERTIFICATE OF SURVEYOR:

STATE OF WYOMING } SS
 COUNTY OF NATRONA }
 I, Charles K. Walz, of Casper, Wyoming, hereby certify that this plat was made from notes taken during an actual survey of the lands shown during May, 1980, and that the corner monuments shown thereon are or will be properly placed under my supervision and in accordance with the subdivision regulations of Natrona County; and that the total area exceeds 110,000. Original boundary survey by Global Engineers.

The foregoing certificate was acknowledged before me by Charles K. Walz, this 26 day of January, 1981.
 Witness my hand and Official Seal
 My Commission Expires 12/4/82.

Notary Public
 Betty B. Jonstaker
 Notary Public

APPROVALS:

Approved by the Community Planning Commission of Casper, Wyoming this 11th day of February, 1981.
 Approved by the City Council of the City of Casper, Wyoming, by Ordinance No. 21164 duly passed, adopted, and approved this 5 day of May, 1981.
 Approved by the Board of County Commissioners of Natrona County, Wyoming by resolution duly passed this 24 day of April, 1981.
 Inspected and approved this 15th day of July, 1981.
 Inspected and approved this 15th day of July, 1981.
 Inspected and approved this 7 day of July, 1981.

RECORDED:

Filed for record in the Office of the County Clerk of Natrona County, Wyoming this 12th day of August, 1981 in Book _____, Page _____.