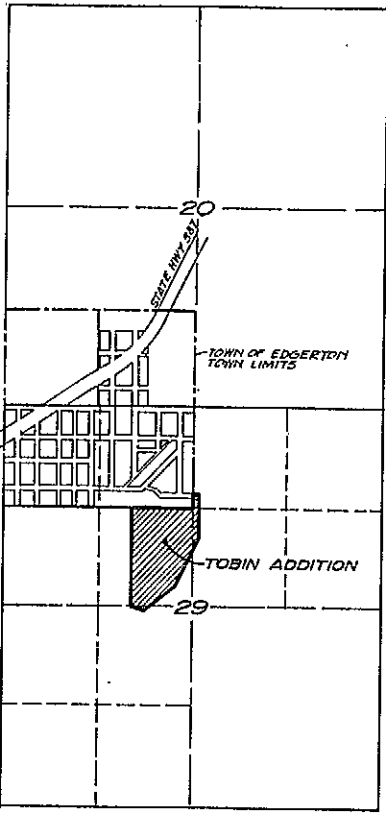
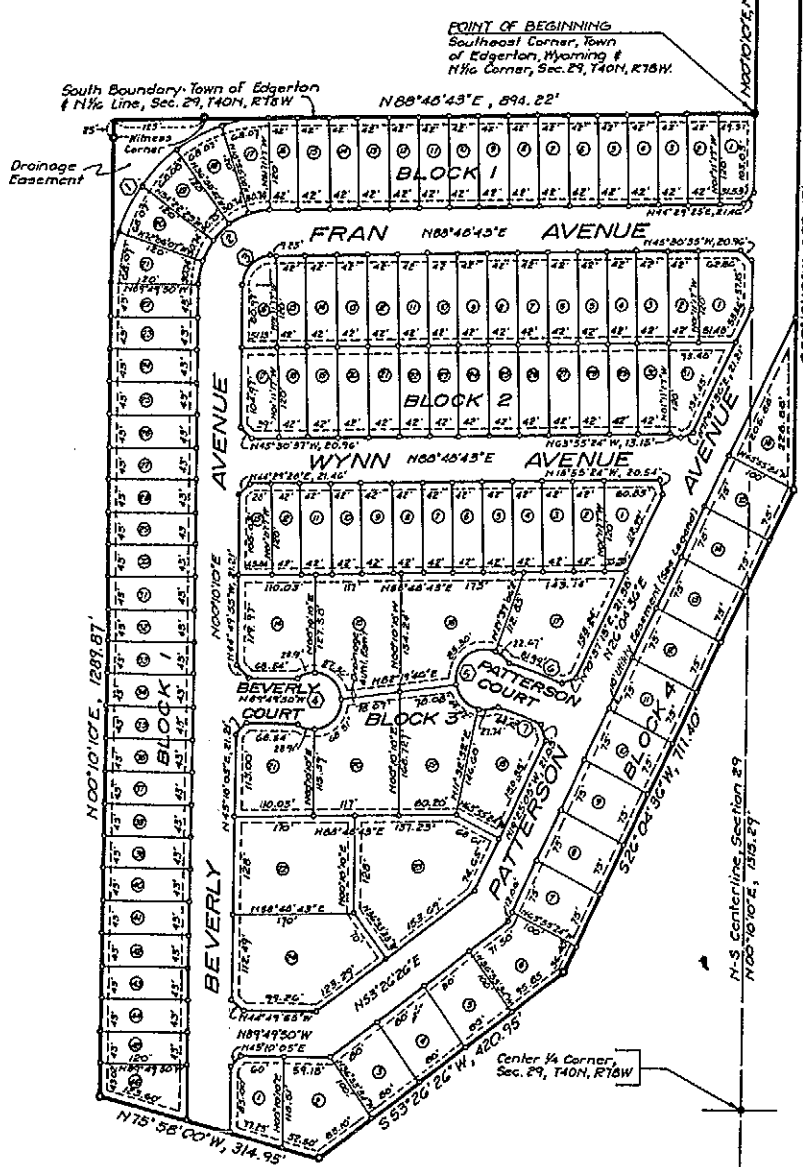
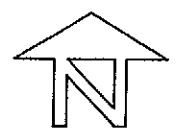


347297

TABLE OF CURVE DATA						
Curve No.	Radius	Tangent	Δ	Arc Length	Degree of Curvature	Chord Bearing Length
1	220'	214.85'	86°36'33"	340.36'	26°02'37"	N44°29'26"E 307.42'
2	100'	97.66'	86°36'33"	154.71'	51°17'45"	N44°29'27"E 139.74'
3	40'	39.06'	86°36'33"	61.86'	143°14'22"	N44°29'28"E 55.90'
4	40'	—	—	103.46'	—	N00°10'00"E 60.00'
5	40'	—	—	103.44'	—	N19°11'29"E 60.02'
6	490'	41.09'	09°35'14"	81.99'	11°41'55"	N70°28'15"W 61.90'
7	430'	34.32'	09°07'57"	68.42'	13°19'29"	N70°29'10"W 68.42'



VICINITY MAP 1"=1000'



LEGEND:

- Found Standard Brass Cap
- Found 2" Iron Pipe
- Set Standard Brass Cap
- Set 5/8" Iron Pin
- Utility Easement - Locations as shown on plat.
- All Easements are 10 feet.

SUBDIVISION PLAT 1"=100'

PLAT PREPARED BY:
WOLZ & ASSOCIATES, INC.
 SUITE 1, 933 W. 14th STREET, CASPER, WYO.

PLAT OF
TOBIN ADDITION

RECORD MAP 1-33-938-1000-AP
 JOHN S. TOLSON

IN THE SE 1/4, NW 1/4 AND THE NE 1/4, SW 1/4 AND THE NW 1/4, NE 1/4 AND THE SW 1/4, NE 1/4 OF SECTION 29, T40N, R76W, 6th P.M.
 AN ADDITION TO THE TOWN OF EDGERTON,
 NATRONA COUNTY, WYOMING

CERTIFICATE OF DEDICATION AND SUBDIVISION:

STATE OF WYOMING }
 COUNTY OF NATRONA }
 The undersigned, Richard R. Roper and Dennis E. Mogan, hereby certify that they are the owners and proprietors of the following described tract of land located in the SW 1/4 of the NW 1/4 and the NE 1/4 of the SW 1/4 and the NW 1/4 of the NE 1/4 of Section 29, T40N, R76W, of the 6th P.M., Natrona County, Wyoming, being more particularly described as follows:
 Beginning at the Southeast Corner of the Town of Edgerton, Wyoming and the N 1/2 corner of Section 29, T40N, R76W, 6th P.M., Natrona County, Wyoming;
 thence, along the N-S centerline of said Section 29, N00°10'10"E, 194.60 feet to a point;
 thence, S89°41'50"E, 60.00 feet to a point; thence, S00°10'10"W, 699.47 feet to a point;
 thence, S26°04'30"W, 711.40 feet to a point; thence, S53°26'20"W, 420.93 feet to a point;
 thence, N15°58'00"W, 314.95 feet to a point; thence, N00°10'10"E, 1289.81 feet to a point
 on the N 1/2 line of said Section 29, and the South boundary of the Town of Edgerton;
 thence, along the said South boundary of the Town of Edgerton and N 1/2 line of said Section 29, N00°48'45"E, 894.22 feet to the point of Beginning; tract containing 29.091 ac. more or less, and as appears on this plat, is with the consent and in accordance with the desires of the undersigned owner and proprietor of said lands, that the name of the subdivision shall be "TOBIN ADDITION", and that the roadways as shown on this plat are hereby dedicated to public use, and hereby grant to the public and private utility companies an easement and license to locate, construct, use, and maintain conduits, lines, wires, and pipes, any or all of them, under and along the strips of land marked "Utility Easement" and under and along the roadways as shown on this plat.

Richard R. Roper Dennis E. Mogan
 Richard R. Roper Dennis E. Mogan

The foregoing instrument was acknowledged before me by Richard R. Roper and Dennis E. Mogan, this 21 day of February, 1983.
 Witness my hand and official seal.
 My Commission Expires 12/25/85
 Notary Public

CERTIFICATE OF SURVEYOR:

STATE OF WYOMING }
 COUNTY OF NATRONA }
 KNOW ALL MEN BY THESE PRESENTS: That I, Charles K. Wolt, do hereby certify that this plat was made from notes taken during an actual and accurate survey of the lands shown during September, 1980, and that the corner monuments shown thereon are true and will be, properly placed, under my supervision, in accordance with the Subdivision Regulations of Natrona County, and that the error of closure exceeds 1:10,000.

Charles K. Wolt
 Charles K. Wolt
 R.E. & L.S. Wyo.

The foregoing instrument was acknowledged before me by Charles K. Wolt this 21 day of February, 1983.
 Witness my hand and official seal.
 My Commission Expires 02-23-1982.
 Notary Public

APPROVAL:

Approved by the Town Council of the Town of Edgerton, Wyoming, by resolution No. 196, this 4 day of May, 1981.
 ATTEST: John Clerk Mayor

OFFICE OF THE REGISTRAR OF DEEDS:

Filed for record in the Office of the County Clerk of Natrona County, Wyoming this 13 day of March, 1983 Book Page
 County Clerk

SUBDIVISION NOTES:

- Total number of lots - 117
- Total number of building lots - 26
- Total number of mobile home lots - 90
- Lots per acre - 4.66
- Average lot size - 9343.8 sq. ft.
- There will be no further splitting of lots.

NATRONA COUNTY APPROVALS:

Approved by the Board of County Commissioners of Natrona County, by resolution duly passed this 22 day of March, 1983.
 ATTEST: County Clerk Chairman

1/1 Term of Office Expires
 January 6, 1982