

260616

2103
TOWN OF HILLS
RECORDED 4/16/79
SHEET NO. 260616

Plat of
TOPAZ ADDITION
TO THE TOWN OF HILLS
BEING A PORTION OF
N 1/2 of the SW 1/4 of Section 12, T.33N., R.80W., 6th E.M.
Natrona County, Wyoming

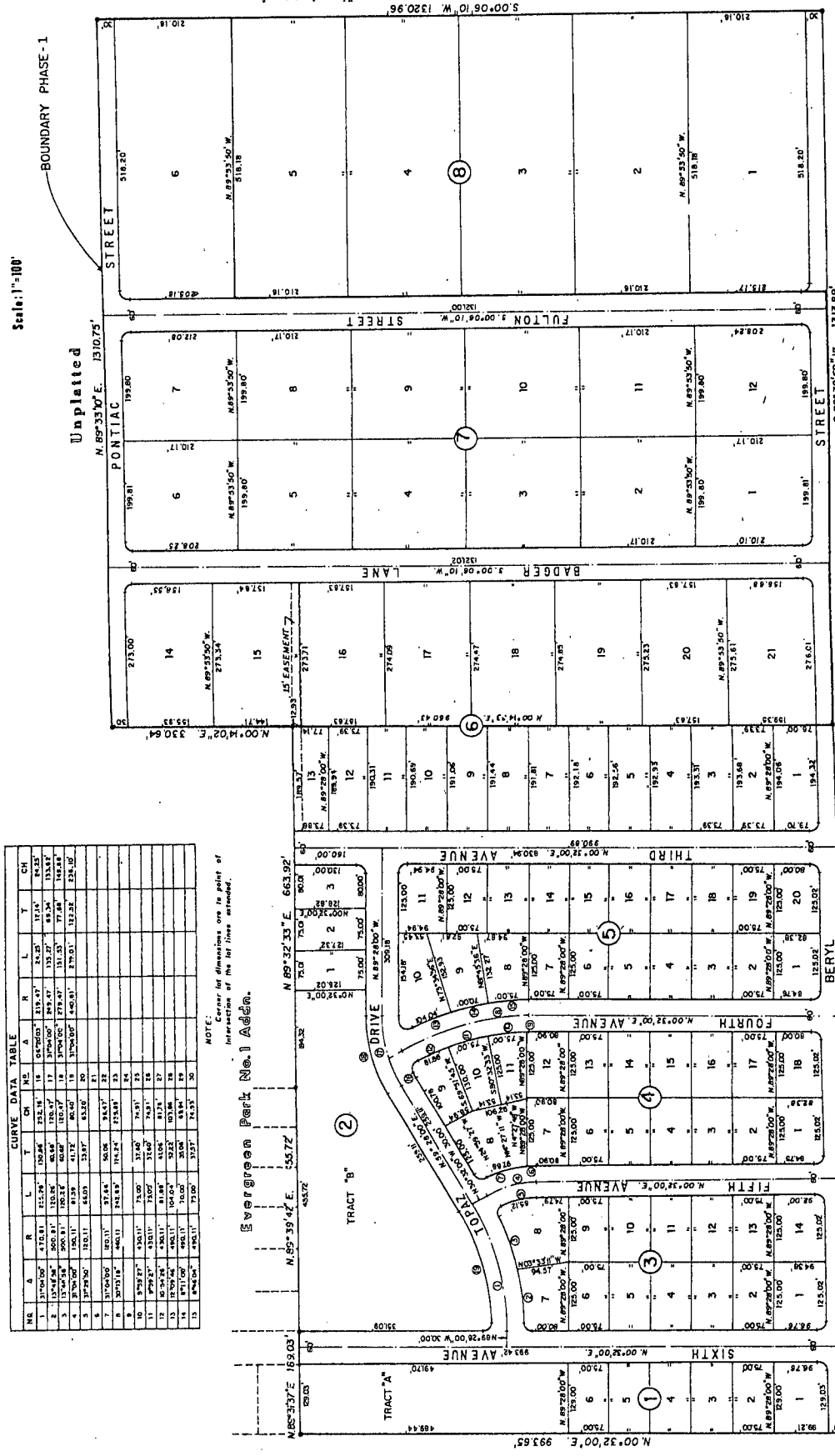


Scale: 1"=100'

NE	A	R	L	T	CH	ME	A	R	L	T	CH	ME	A	R	L	T	CH	ME
1	31700.00	412.81	125.78	109.28	252.18	11	05.7000	219.47	11.71	11.71	11.71	11.71	11.71	11.71	11.71	11.71	11.71	11.71
2	13744.28	500.81	120.78	60.88	122.47	12	31700.00	279.47	15.27	15.27	15.27	15.27	15.27	15.27	15.27	15.27	15.27	15.27
3	13744.28	500.81	120.78	60.88	122.47	13	31700.00	279.47	15.27	15.27	15.27	15.27	15.27	15.27	15.27	15.27	15.27	15.27
4	13744.28	500.81	120.78	60.88	122.47	14	31700.00	279.47	15.27	15.27	15.27	15.27	15.27	15.27	15.27	15.27	15.27	15.27
5	13744.28	500.81	120.78	60.88	122.47	15	31700.00	279.47	15.27	15.27	15.27	15.27	15.27	15.27	15.27	15.27	15.27	15.27
6	13744.28	500.81	120.78	60.88	122.47	16	31700.00	279.47	15.27	15.27	15.27	15.27	15.27	15.27	15.27	15.27	15.27	15.27
7	13744.28	500.81	120.78	60.88	122.47	17	31700.00	279.47	15.27	15.27	15.27	15.27	15.27	15.27	15.27	15.27	15.27	15.27
8	13744.28	500.81	120.78	60.88	122.47	18	31700.00	279.47	15.27	15.27	15.27	15.27	15.27	15.27	15.27	15.27	15.27	15.27
9	13744.28	500.81	120.78	60.88	122.47	19	31700.00	279.47	15.27	15.27	15.27	15.27	15.27	15.27	15.27	15.27	15.27	15.27
10	13744.28	500.81	120.78	60.88	122.47	20	31700.00	279.47	15.27	15.27	15.27	15.27	15.27	15.27	15.27	15.27	15.27	15.27
11	13744.28	500.81	120.78	60.88	122.47	21	31700.00	279.47	15.27	15.27	15.27	15.27	15.27	15.27	15.27	15.27	15.27	15.27
12	13744.28	500.81	120.78	60.88	122.47	22	31700.00	279.47	15.27	15.27	15.27	15.27	15.27	15.27	15.27	15.27	15.27	15.27
13	13744.28	500.81	120.78	60.88	122.47	23	31700.00	279.47	15.27	15.27	15.27	15.27	15.27	15.27	15.27	15.27	15.27	15.27
14	13744.28	500.81	120.78	60.88	122.47	24	31700.00	279.47	15.27	15.27	15.27	15.27	15.27	15.27	15.27	15.27	15.27	15.27
15	13744.28	500.81	120.78	60.88	122.47	25	31700.00	279.47	15.27	15.27	15.27	15.27	15.27	15.27	15.27	15.27	15.27	15.27
16	13744.28	500.81	120.78	60.88	122.47	26	31700.00	279.47	15.27	15.27	15.27	15.27	15.27	15.27	15.27	15.27	15.27	15.27
17	13744.28	500.81	120.78	60.88	122.47	27	31700.00	279.47	15.27	15.27	15.27	15.27	15.27	15.27	15.27	15.27	15.27	15.27
18	13744.28	500.81	120.78	60.88	122.47	28	31700.00	279.47	15.27	15.27	15.27	15.27	15.27	15.27	15.27	15.27	15.27	15.27
19	13744.28	500.81	120.78	60.88	122.47	29	31700.00	279.47	15.27	15.27	15.27	15.27	15.27	15.27	15.27	15.27	15.27	15.27
20	13744.28	500.81	120.78	60.88	122.47	30	31700.00	279.47	15.27	15.27	15.27	15.27	15.27	15.27	15.27	15.27	15.27	15.27

NOTE: Corner lot dimensions are in feet of
Intersection of the lot lines attached.

Evergreen Part No. 1 Addn.



Certificate of Dedication

A tract of land situated in section Twelve (12) of Township 33 North, Range 80 West, of the Sixth Principal Meridian, Town of Hills, County of Natrona, State of Wyoming, more particularly described as follows:

From the SW corner of said section 12, Town, 33 North, Range 80 West, thence N00°32'00"E, a distance of 1524.88 feet to the true point of beginning, thence S89°26'40"W, a distance of 1313.79 feet, thence N00°32'00"E, a distance of 1524.88 feet, thence S89°26'40"W, a distance of 1313.79 feet, thence N00°32'00"E, a distance of 1524.88 feet, thence S89°26'40"W, a distance of 1313.79 feet, thence N00°32'00"E, a distance of 1524.88 feet, thence S89°26'40"W, a distance of 1313.79 feet, thence N00°32'00"E, a distance of 1524.88 feet, thence S89°26'40"W, a distance of 1313.79 feet, to the true point of beginning, Containing 63.989 acres more or less.

Acknowledgment

We, the undersigned David W. Holmes and Everett L. Alloway as individuals being the owners and proprietors of the above described Subdivision appear on this plat and is with the free consent and in accordance with the desires of the above named owners and proprietors of said land, the SUBDIVISION shall be recorded 'TOPAZ ADDITION'. All streets and roads and tracts A & B set forth in the Plat are hereby dedicated to the use of the Public.

Signed: *David W. Holmes*
Everett L. Alloway
Witness: *Walter R. Gomer*

Certificate of Surveyor

STATE OF WYOMING
COUNTY OF NATRONA } 35
I, WALTER R. GOMER, of Cooper, Wyoming, do hereby certify that this Plat was prepared from notes taken under my direction during an actual survey from the period of October, 1978 to October, 1979. This survey was reviewed by myself during October, 1978. The boundary has been accurately surveyed and shall be ascertained in accordance with the requirements of the Town of Hills and Natrona County and proper survey practices. All dimensions are expressed in feet and decimals thereof and all courses referred to in the True Meridian; said Plat is True and correct to the best of my knowledge and belief.

Wyoming Registration L.S. No. 2088
Walter R. Gomer
Walter R. Gomer

Subscribed to by me and seen to before me this 9th day of April, 1979
Walter R. Gomer
My commission expires July 24, 1981

APPROVALS

INSPECTED AND APPROVED on the 16th day of April, 1979.
Walter R. Gomer
Walter R. Gomer

Filed for Record in the Office of the County Clerk of Natrona County, Wyoming, on this 16th day of April, 1979.
Walter R. Gomer
Walter R. Gomer

Unplatted

APPROVED by the Town of Hills on this 15th day of April, 1979.
Walter R. Gomer
Walter R. Gomer

APPROVED: Board of County Commissioners of Natrona County, Wyoming, by Resolution 449 passed on this 15th day of April, 1979.
Walter R. Gomer
Walter R. Gomer



SW COR. SEC. 12
T.33N. - R.80W. - 6th E.M.