

#2103F  
 Lots 1-3, Block 22, Trails West Estates No. 2  
 Recordation July 29, 2003  
 Instrument # 722361

**CERTIFICATE OF DEDICATION**

STATE OF WYOMING }  
 COUNTY OF NATRONA } SS

THE UNDERSIGNED, GARY O. SALVESON AND CRAIG H. EVERT, DO HEREBY CERTIFY THAT THEY ARE THE OWNERS AND PROPRIETORS OF THE FOLLOWING DESCRIBED PARCEL OF LAND, A PARCEL OF LAND SITUATE IN THE NW¼SW¼ OF SECTION 22, T.33N., R.80W., 6TH P.M., NATRONA COUNTY, WYOMING BEING MORE PARTICULARLY DESCRIBED AS FOLLOWS:

COMMENCING AT THE WEST ¼ CORNER OF SAID SECTION 22, MONUMENTED BY A BRASS CAP;  
 THENCE S08°45'04"E ALONG THE WEST LINE OF SAID SECTION 22, A DISTANCE OF 458.69 FEET TO THE NORTHWEST CORNER OF THE PARCEL, MONUMENTED BY A BRASS CAP;  
 THENCE N06°45'20"E A DISTANCE OF 284.86 FEET TO A POINT LOCATED ON THE EAST RIGHT-OF-WAY LINE OF FLINTLOCK DRIVE, BEING THE NORTHEAST CORNER OF THE PARCEL, MONUMENTED BY A BRASS CAP;  
 THENCE S07°01'56"E ALONG THE EAST RIGHT-OF-WAY LINE OF FLINTLOCK DRIVE, A DISTANCE OF 96.27 FEET TO A POINT OF CURVATURE, MONUMENTED BY A BRASS CAP;  
 THENCE ALONG A CURVE TO THE LEFT, HAVING A RADIUS OF 230.00 FEET, THROUGH A CENTRAL ANGLE OF 172°16'16", A DISTANCE OF 70.00 FEET, WITH A CHORD BEARING OF S08°45'04"E, A DISTANCE OF 68.75 FEET TO A POINT OF COMPOUND CURVATURE, MONUMENTED BY A BRASS CAP;  
 THENCE ALONG A CURVE TO THE LEFT, HAVING A RADIUS OF 20.00 FEET, THROUGH A CENTRAL ANGLE OF 90°00'42", A DISTANCE OF 31.42 FEET, WITH A CHORD BEARING OF S87°28'33"E, A DISTANCE OF 28.29 FEET TO A POINT OF ANGENC, LOCATED ON THE NORTHERLY RIGHT-OF-WAY LINE OF TREVETT LANE, MONUMENTED BY A BRASS CAP;  
 THENCE N72°24'22"E, ALONG THE NORTHERLY RIGHT-OF-WAY LINE OF TREVETT LANE, A DISTANCE OF 95.41 FEET, TO A POINT, MONUMENTED BY A BRASS CAP;  
 THENCE S75°01'56"E, A DISTANCE OF 80.47 FEET TO A POINT LOCATED ON THE SOUTHERLY RIGHT-OF-WAY LINE OF TREVETT LANE, MONUMENTED BY A BRASS CAP;  
 THENCE N72°24'22"E, ALONG THE SOUTHERLY RIGHT-OF-WAY LINE OF TREVETT LANE, A DISTANCE OF 18.08 FEET, TO A POINT, MONUMENTED BY A BRASS CAP;  
 THENCE S07°01'56"E, ALONG THE EAST LINE OF THE PARCEL, A DISTANCE OF 314.14 FEET TO THE SOUTHEAST CORNER OF THE PARCEL, LOCATED IN THE NORTH PLATTE RIVER, MONUMENTED BY A BRASS CAP LOCATED 100'35'00"W, A DISTANCE OF 39.15 FEET FROM THE ACTUAL CORNER LOCATION;

THENCE S70°15'15"W, ALONG THE SOUTH LINE OF THE PARCEL, A DISTANCE OF 200.69 FEET TO THE SOUTHWEST CORNER OF THE PARCEL LOCATED ON THE WEST LINE OF SAID SECTION 22, MONUMENTED BY A BRASS CAP MEASURER CORNER LOCATED N06°45'20"E, A DISTANCE OF 166.74 FEET FROM THE ACTUAL CORNER LOCATION;

THENCE N06°45'20"E, ALONG THE WEST LINE OF SAID SECTION 22, A DISTANCE OF 634.44 FEET TO THE POINT OF BEGINNING.

THE ABOVE DESCRIBED TRACT OF LAND CONTAINS 8.95 ACRES, MORE OR LESS, AND IS SUBJECT TO ANY RIGHTS-OF-WAY, AND/OR EASEMENTS, RESERVATIONS AND ENCUMBRANCES WHICH HAVE BEEN LEGALLY ACQUIRED.

THE TRACT OF LAND, AS IT APPEARS ON THIS PLAN, IS DEDICATED WITH THE FREE CONSENT AND IN ACCORDANCE WITH THE DESIRES OF THE UNDERSIGNED OWNERS AND PROPRIETORS. THE NAME OF THE SUBDIVISION SHALL BE TRAILS WEST ESTATES NO. 2, AND THE OWNERS HEREBY GRANT, SELL, CONVEY, CONFIRM, CONFIRMATION, CONFIRMATORY, CONFIRMATION, CONFIRMATION, CONFIRMATION, CONFIRMATION, LINES, WEBS AND SPRES, ANY OR ALL OF THEM UNDER AND ALONG THE STRIPS OF LAND MARKED "DEDICATION" AS SHOWN ON THIS PLAN.

ALL ROADS AND STREETS AS SHOWN HEREON, ARE HEREBY DEDICATED TO THE USE OF THE PUBLIC.

GARY O. SALVESON  
 P.O. BOX 2213  
 CASPER, WYOMING 82602

CRAIG H. EVERT  
 7001 TREVETT LANE  
 CASPER, WYOMING 82604

THE FOREGOING INSTRUMENT WAS ACKNOWLEDGED BEFORE ME BY GARY O. SALVESON, THIS 15<sup>th</sup> DAY OF July, 2003.

WITNESS MY HAND AND OFFICIAL SEAL  
 MY COMMISSION EXPIRES June 3, 2006  
 NOTARY PUBLIC

THE FOREGOING INSTRUMENT WAS ACKNOWLEDGED BEFORE ME BY CRAIG H. EVERT, THIS 15<sup>th</sup> DAY OF July, 2003.

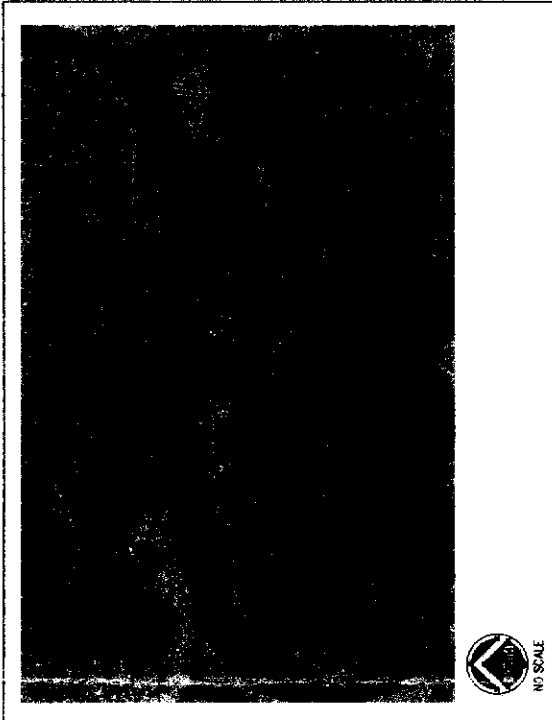
WITNESS MY HAND AND OFFICIAL SEAL  
 MY COMMISSION EXPIRES June 3, 2006  
 NOTARY PUBLIC

CERTIFICATE OF SURVEYOR  
 STATE OF WYOMING }  
 COUNTY OF NATRONA } SS

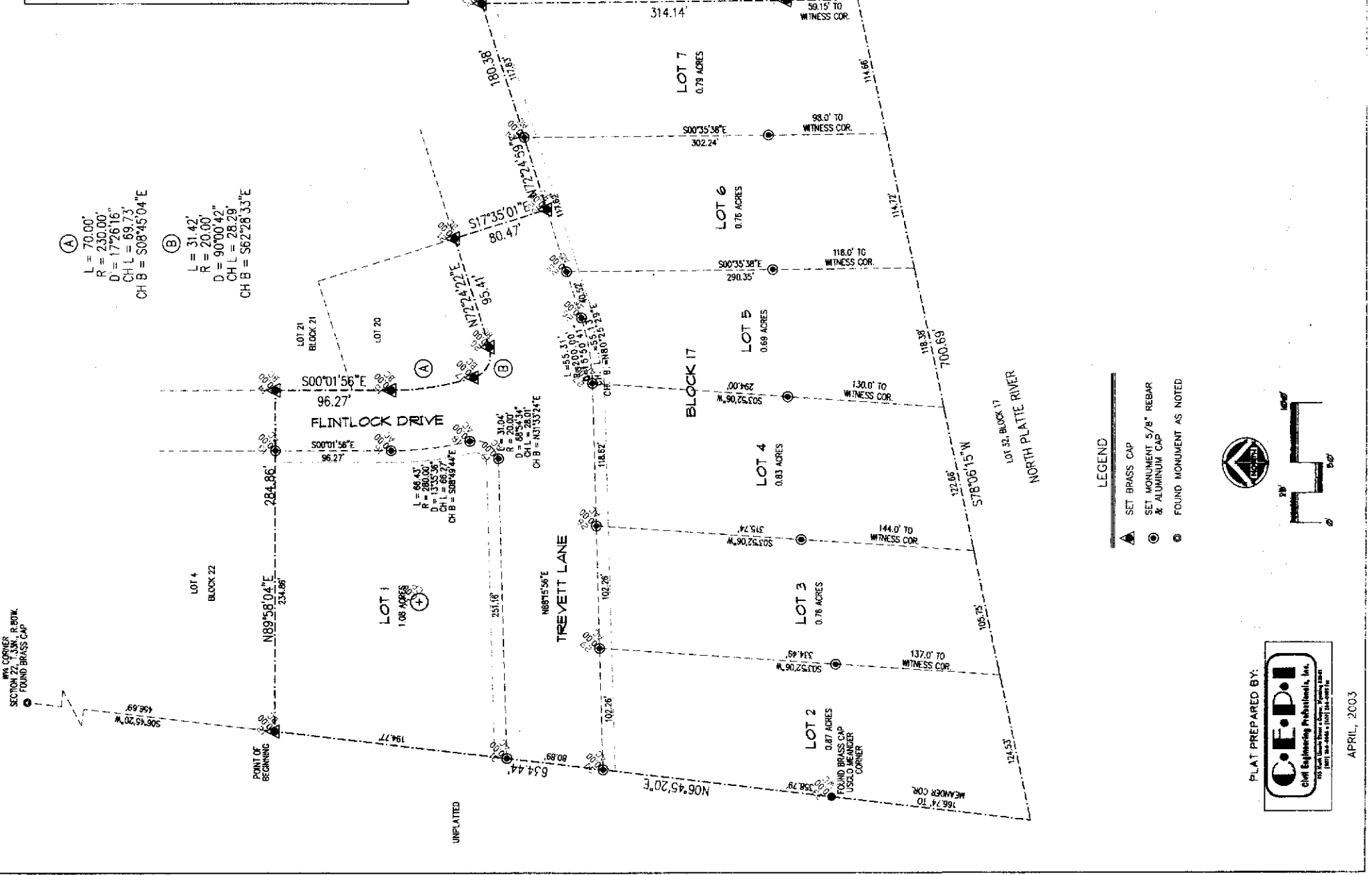
I, WILLIAM R. FEHRINGER, A REGISTERED PROFESSIONAL LAND SURVEYOR, LICENSE NO. 5528, DO HEREBY CERTIFY THAT THIS PLAN WAS MADE FROM NOTES TAKEN DURING AN ACTUAL SURVEY MADE UNDER MY DIRECT SUPERVISION IN APRIL, 2003, AND THAT THIS PLAN, TO THE BEST OF MY KNOWLEDGE AND BELIEF, CORRECTLY AND ACCURATELY REPRESENTS SAID SURVEY.

THE FOREGOING INSTRUMENT WAS ACKNOWLEDGED BEFORE ME BY WILLIAM R. FEHRINGER THIS 14<sup>th</sup> DAY OF July, 2003.

WITNESS MY HAND AND OFFICIAL SEAL  
 MY COMMISSION EXPIRES July 2, 2007



**VICINITY MAP**

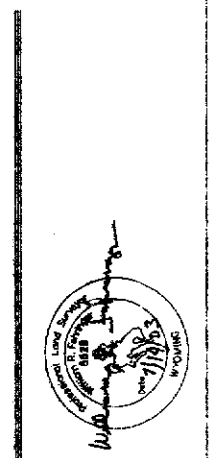


**APPROVALS**  
 APPROVED BY THE CITY OF CASPER PLANNING AND ZONING COMMISSION OF CASPER, WYOMING  
 THIS 29<sup>th</sup> DAY OF June, 2003.  
 ATTEST: *Michael R. B. B.* CHAIRMAN  
*Barbara R. Bergman* MAYOR  
 CITY CLERK: *John* DAY OF July, 2003.  
 INSPECTED AND APPROVED THIS 12<sup>th</sup> DAY OF July, 2003.  
 INSPECTED AND APPROVED THIS 12<sup>th</sup> DAY OF July, 2003.  
 COUNTY SURVEYOR: *William R. Fehring*

**RECORDED**  
 FILED FOR RECORD IN THE OFFICE OF THE COUNTY CLERK OF NATRONA COUNTY, WYOMING THIS 29<sup>th</sup> DAY OF July, 2003.  
 INSTRUMENT NO. 722361  
 COUNTY CLERK: *Mary Colwell*

**NOTES**

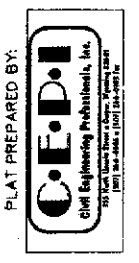
- ERROR OF CLOSURE EXCEEDS 1:10,000.
- BASIS OF BEARINGS IS THE WEST LINE OF SECTION 22 AS SHOWN ON THE TRAILS WEST ESTATES SUBDIVISION PLAN.



Restrictions indicating a preference, limitation or discrimination based on race, color, religion, sex, handicap, familial status, or national origin are hereby deleted to the extent such restrictions violate 42 USC 3604(c).



Compliments of:  
**FIRST AMERICAN TITLE INSURANCE CO., INC.**  
 120 N. Center Street • Casper, WY 82601 • (307) 237-8486



APRIL, 2003