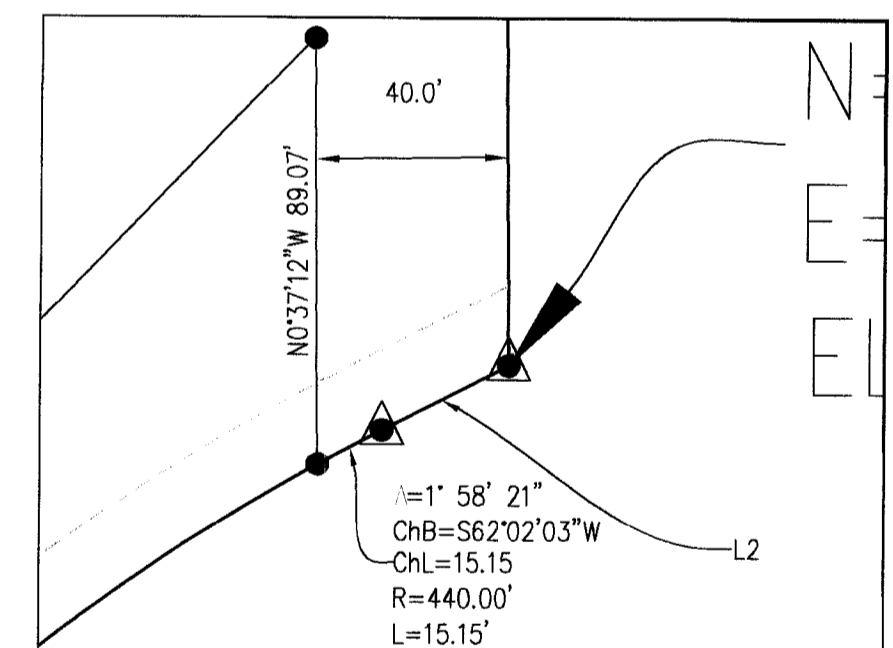
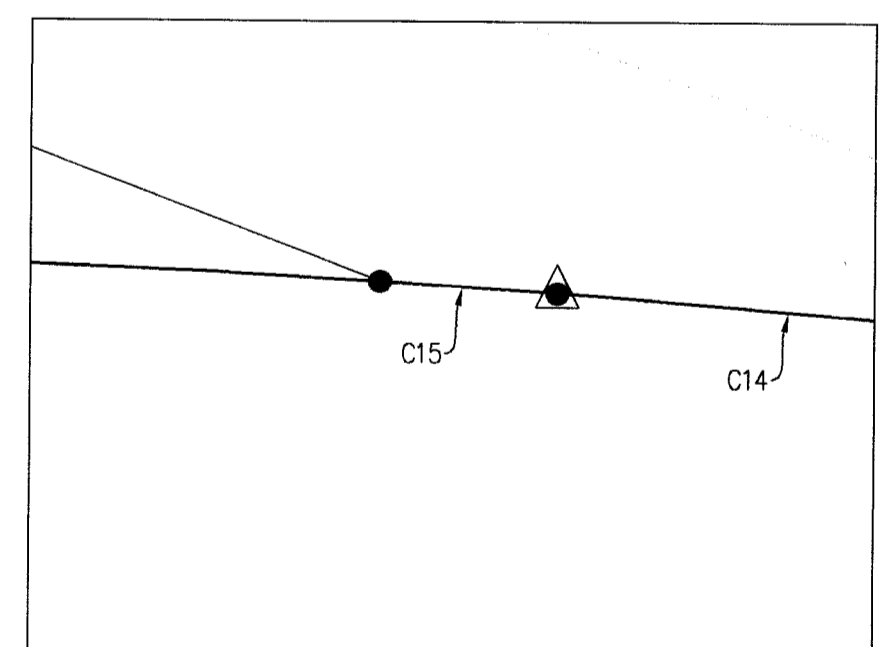


VICINITY MAP  
NO SCALE

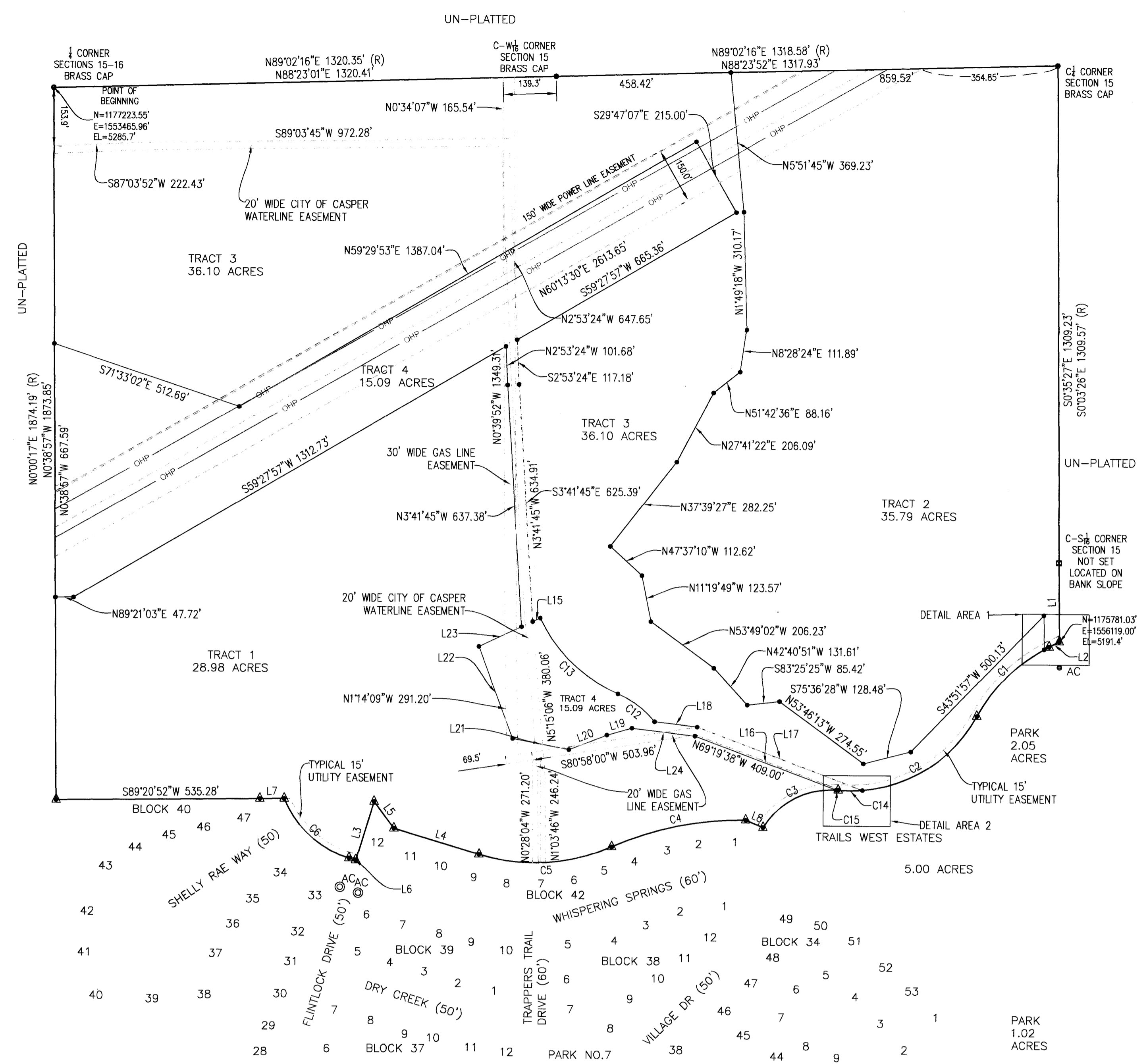
LINE TABLE			CURVE TABLE					
Line #	Bearing	Length	CURVE #	RADIUS	ARC LENGTH	DELTA	CH B	CH L
L1	S0°37'12"E	207.46'	C1	440.00'	267.57'	34°50'34"	S45°35'56"W	263.47'
L2	S62°56'54"W	29.64'	C2	375.00'	436.89'	66°45'08"	S61°32'35"W	412.60'
L3	S16°48'49"W	161.75'	C3	210.00'	232.21'	63°21'20"	S63°14'16"W	220.56'
L4	N73°11'55"W	234.36'	C4	830.00'	362.05'	24°59'35"	S78°24'46"W	359.19'
L5	N36°53'04"W	87.55'	C5	500.00'	356.20'	40°49'05"	S86°23'21"W	348.72'
L6	N73°11'55"W	18.06'	C6	270.00'	240.14'	50°57'36"	N47°46'09"W	232.31'
L7	S89°24'21"W	63.65'	C12	250.00'	121.96'	27°57'06"	S53°03'36"E	120.76'
L8	N67°20'03"W	49.54'	C13	400.00'	292.53'	41°54'05"	S46°05'06"E	286.05'
L15	N64°51'42"E	22.05'	C14	375.00'	63.68'	9°43'46"	N89°56'44"W	63.60'
L16	N69°19'38"W	397.86'	C15	210.00'	5.64'	1°32'15"	S85°51'12"E	5.64'
L17	S69°19'38"E	465.69'						
L18	S83°06'52"E	112.84'						
L19	S74°02'17"W	67.83'						
L20	S68°43'09"W	107.15'						
L21	N79°00'12"W	150.69'						
L22	N20°39'02"W	257.89'						
L23	N64°51'42"E	123.33'						
L24	N83°06'52"W	166.90'						



DETAIL MAP 1  
NO SCALE



DETAIL MAP 2  
NO SCALE



- NOTES
1. ERROR OF CLOSURE EXCEEDS 1:350,000.
  2. BASIS OF BEARINGS IS THE WYOMING STATE PLANE COORDINATE SYSTEM, EAST CENTRAL ZONE, NAD 1983/2011.
  3. ELEVATIONS ARE FOR REFERENCE ONLY, DISTANCES ARE GRID.
  4. AT THE POINT OF BEGINNING THE CONVERGENCE IS 0°36'39.89" AND THE COMBINED FACTOR IS 0.99975133

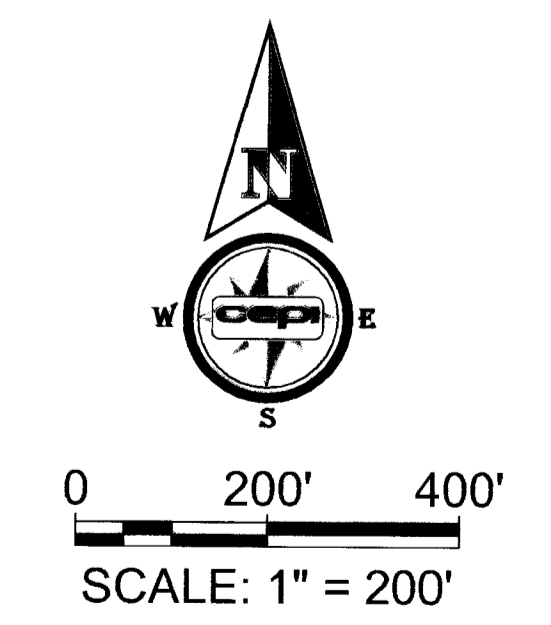
APPROVALS

APPROVED BY THE CITY OF CASPER PLANNING AND ZONING COMMISSION OF CASPER, WYOMING  
 THIS 7th DAY OF October, 2021.  
 ATTEST: Liz Becher SECRETARY

APPROVED BY THE CITY COUNCIL OF CASPER, WYOMING BY ORDINANCE NO. 21-21 DULY PASSED,  
 ADOPTED AND APPROVED THIS 7th DAY OF September, 2021.  
 ATTEST: Keith P. Tyler ASSISTANT CITY CLERK

INSPECTED AND APPROVED THIS 7th DAY OF October, 2021.  
 ATTEST: Bradley D. Neumiller CITY SURVEYOR

INSPECTED AND APPROVED THIS 5th DAY OF October, 2021.



- LEGEND
- POSITION CALCULATED / NOT SET
  - SET MONUMENT 5/8" REBAR & ALUMINUM CAP
  - FOUND MONUMENT AS NOTED
  - ▲ SET BRASS CAP

CERTIFICATE OF SURVEYOR

STATE OF WYOMING } SS  
 COUNTY OF NATIONA }

I, BRADLEY D. NEUMILLER, A REGISTERED PROFESSIONAL LAND SURVEYOR, LICENSE NO. 13836, DO HEREBY CERTIFY THAT THIS PLAT WAS MADE FROM NOTES TAKEN DURING AN ACTUAL SURVEY MADE UNDER MY DIRECT SUPERVISION IN FEBRUARY AND MARCH, 2021, AND THAT THIS PLAT, TO THE BEST OF MY KNOWLEDGE AND BELIEF, CORRECTLY AND ACCURATELY REPRESENTS SAID SURVEY. ALL BEING TRUE AND CORRECT TO THE BEST OF MY KNOWLEDGE AND BELIEF.

THE FOREGOING INSTRUMENT WAS ACKNOWLEDGED BEFORE ME BY BRADLEY D. NEUMILLER  
 THIS 16th DAY OF SEPTEMBER, 2021.  
 WITNESS MY HAND AND OFFICIAL SEAL.  
 MY COMMISSION EXPIRES 3-29-24

CITY OF CASPER  
 200 NORTH DAVID STREET  
 CASPER, WYOMING 82601  
Steve Freeland  
 STEVE FREELAND  
 MAYOR

ROCKING K PROPERTIES, LLC  
 P.O. BOX 2671  
 CASPER, WYOMING 82602  
Keith P. Tyler  
 KEITH P. TYLER  
 MANAGING MEMBER  
 ROCKING K PROPERTIES, LLC

SAMI HERDT  
 NOTARY PUBLIC - WYOMING  
 Natrona County  
 My Commission Expires Mar. 29, 2024

THE FOREGOING INSTRUMENT WAS ACKNOWLEDGED BEFORE ME BY KEITH P. TYLER,  
 MANAGING MEMBER OF ROCKING K PROPERTIES, LLC, THIS 24 DAY OF  
September, 2021.  
 WITNESS MY HAND AND OFFICIAL SEAL.  
 MY COMMISSION EXPIRES 3-29-24

VACATION AND REPLAT OF  
 LOTS 48 - 56, OF BLOCK 40, ALL OF BLOCK 41,  
 PARK NO. 3 AND LOTS 13 - 49, OF BLOCK 42 AND  
 ALL OF BLOCKS 43, 44, 45, 46, 47, 48 AND 49  
 TRAILS WEST ESTATES  
 AS

TRAILS WEST ESTATES NO. 5 ADDITION

AN ADDITION TO THE CITY OF CASPER, WYOMING  
 BEING A PORTION OF THE SW¼  
 OF SECTION 15, T.33N., R.80W., 6TH P.M.,  
 NATIONA COUNTY WYOMING  
 MARCH, 2021

SAMI HERDT  
 NOTARY PUBLIC - WYOMING  
 Natrona County  
 My Commission Expires Mar. 29, 2024  
Sam Herdt  
 NOTARY PUBLIC