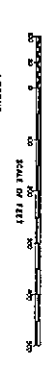
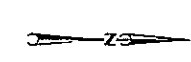




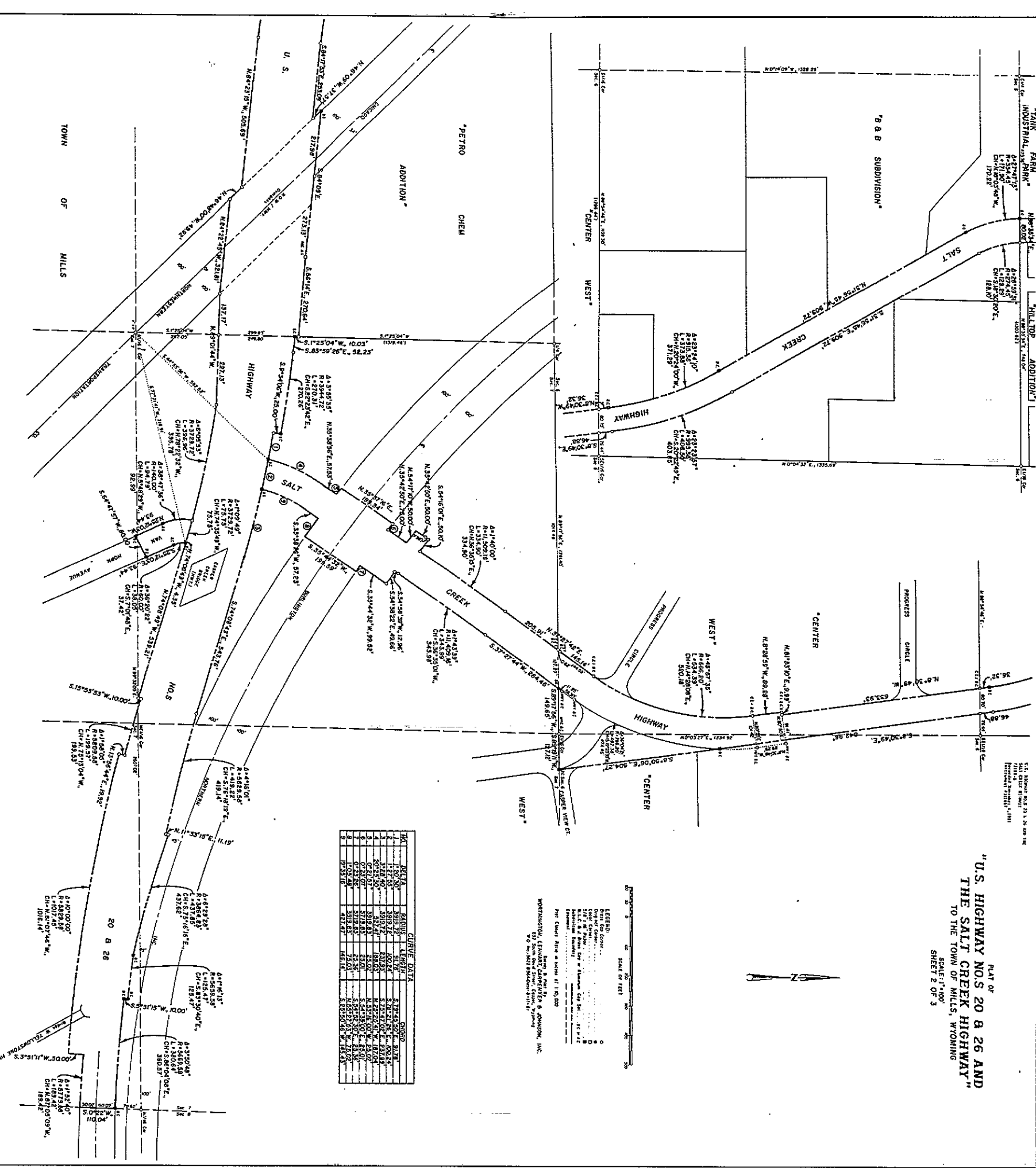
PLAT OF  
**"U.S. HIGHWAY NOS 20 B 26 AND  
 THE SALT CREEK HIGHWAY"**  
 TO THE TOWN OF MILLS, WYOMING  
 SCALE: 1"=100'  
 SHEET 2 OF 3



**LEGEND**  
 --- Right-of-Way  
 --- Easement  
 --- Survey Line  
 --- Section Line  
 --- Township and Range Line  
 --- Contour Line  
 --- Proposed Highway  
 --- Existing Highway  
 --- Salt Creek  
 --- Progress Circle  
 --- Center Line  
 --- West Line  
 --- East Line  
 --- North Line  
 --- South Line

WORTHINGTON, LEONARD, CARPENTER & JOHNSON, INC.  
 100 N. 10th Street, Cheyenne, Wyo. 82001  
 Phone: 338-1111

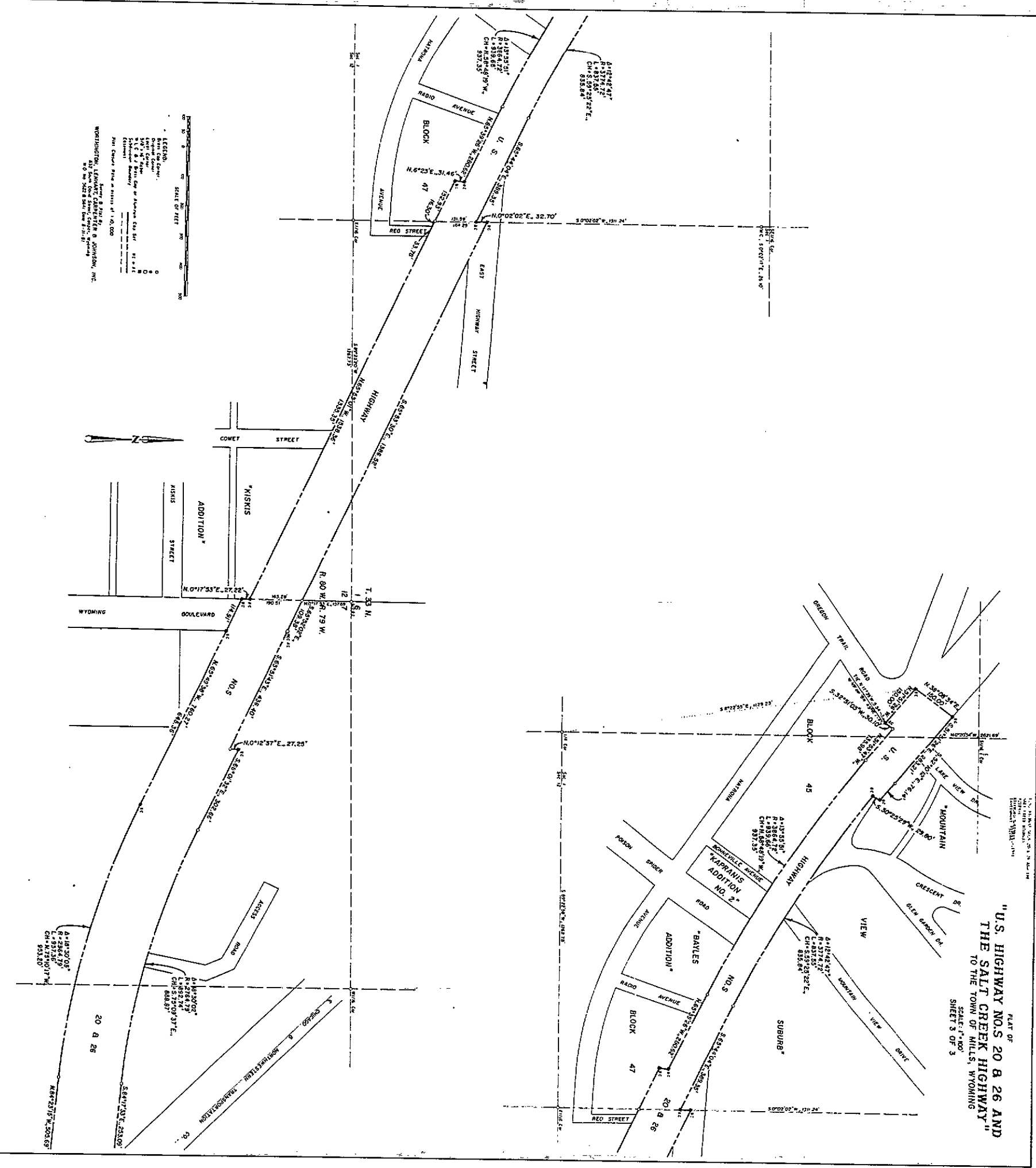
NO.	BEARING	CURVE DATA
1	S 89° 00' 00" E	100.00' RADIUS
2	S 89° 00' 00" E	100.00' RADIUS
3	S 89° 00' 00" E	100.00' RADIUS
4	S 89° 00' 00" E	100.00' RADIUS
5	S 89° 00' 00" E	100.00' RADIUS
6	S 89° 00' 00" E	100.00' RADIUS
7	S 89° 00' 00" E	100.00' RADIUS
8	S 89° 00' 00" E	100.00' RADIUS
9	S 89° 00' 00" E	100.00' RADIUS
10	S 89° 00' 00" E	100.00' RADIUS
11	S 89° 00' 00" E	100.00' RADIUS
12	S 89° 00' 00" E	100.00' RADIUS
13	S 89° 00' 00" E	100.00' RADIUS
14	S 89° 00' 00" E	100.00' RADIUS
15	S 89° 00' 00" E	100.00' RADIUS
16	S 89° 00' 00" E	100.00' RADIUS
17	S 89° 00' 00" E	100.00' RADIUS
18	S 89° 00' 00" E	100.00' RADIUS
19	S 89° 00' 00" E	100.00' RADIUS
20	S 89° 00' 00" E	100.00' RADIUS
21	S 89° 00' 00" E	100.00' RADIUS
22	S 89° 00' 00" E	100.00' RADIUS
23	S 89° 00' 00" E	100.00' RADIUS
24	S 89° 00' 00" E	100.00' RADIUS
25	S 89° 00' 00" E	100.00' RADIUS
26	S 89° 00' 00" E	100.00' RADIUS
27	S 89° 00' 00" E	100.00' RADIUS
28	S 89° 00' 00" E	100.00' RADIUS
29	S 89° 00' 00" E	100.00' RADIUS
30	S 89° 00' 00" E	100.00' RADIUS



2188-B

CLIVE

PLAT OF  
 "U.S. HIGHWAY NOS 20 & 26 AND  
 THE SALT CREEK HIGHWAY"  
 TO THE TOWN OF MILLS, WYOMING  
 SCALE: 1"=100'  
 SHEET 3 OF 3



LEGEND:  
 --- Boundary  
 --- Easement  
 --- Right of Way  
 --- 1/2" & 3/4" Bell Curves of Various Cur. Rat. as Shown  
 --- Proposed  
 --- Existing

200 Feet  
 SCALE OF FEET

WORTHINGTON, LEONARD & SONS, INC.  
 215 South Durand Street, Chicago, Illinois  
 20 to 227 & 229 South Dearborn Street, Chicago, Illinois