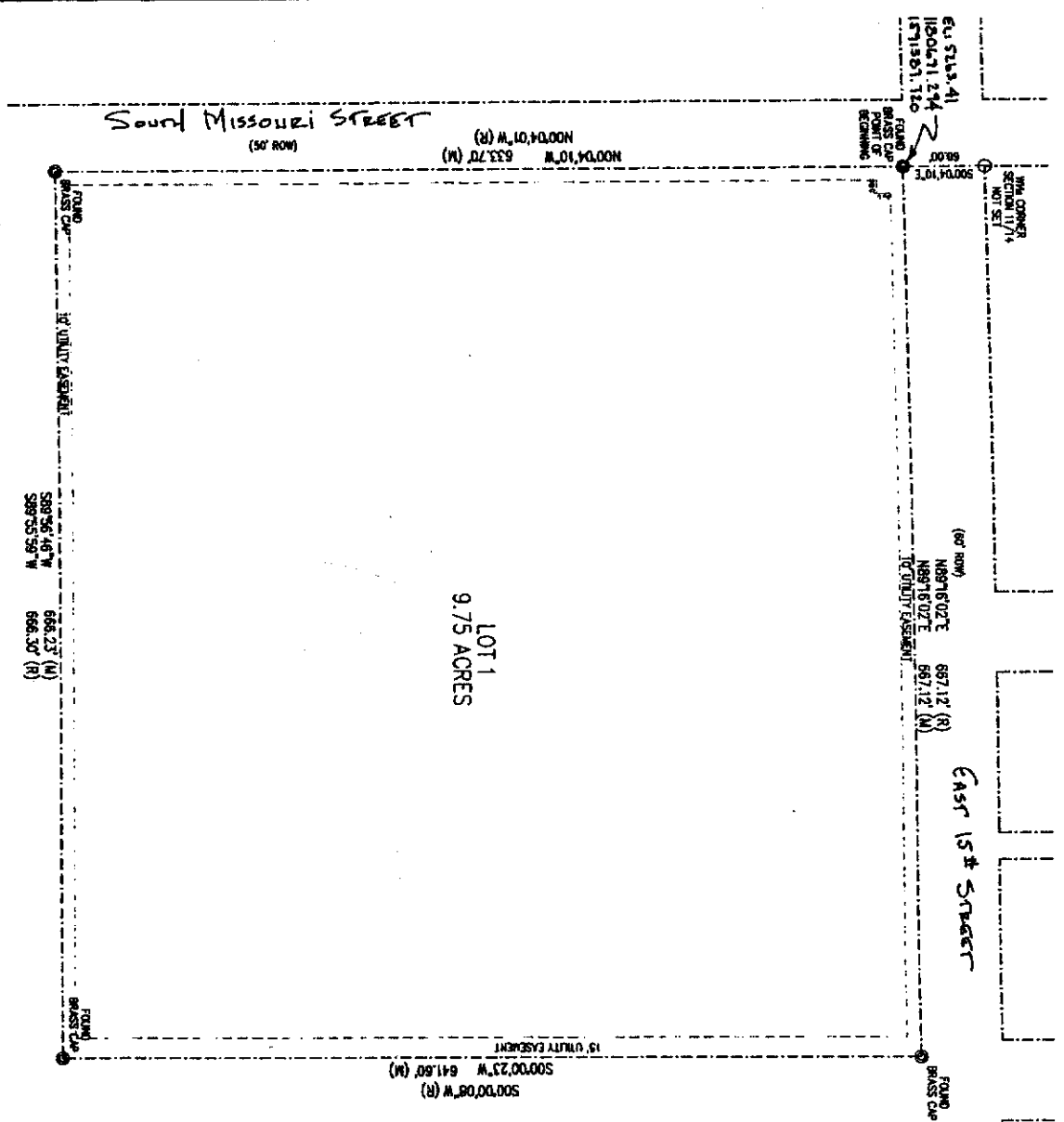
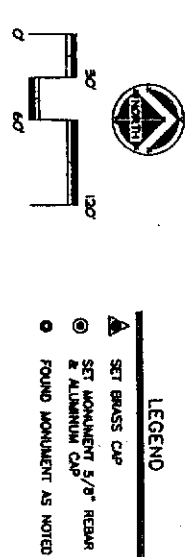
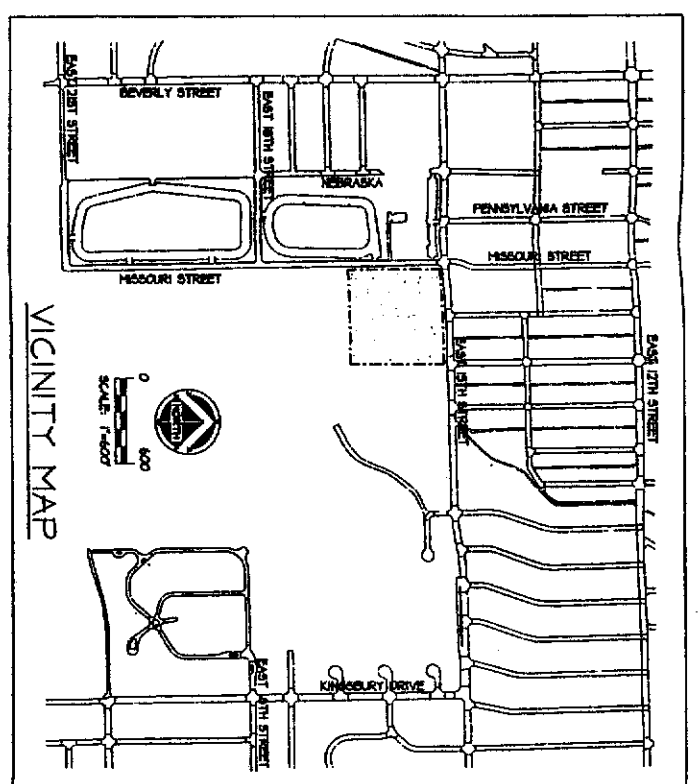


# 2213



Shenandoah West



**RECORDED**  
FILED FOR RECORD IN THE OFFICE OF THE COUNTY CLERK OF NATRONA COUNTY, WYOMING THIS 19<sup>th</sup> DAY OF NOV, 2004.  
INSTRUMENT NO. 755478

**NOTES**  
1. ERROR OF CLOSURE EXCEEDS 1:10,000.  
2. BASIS OF BEARINGS IS THE NORTH LINE OF THE PARCEL.

**CERTIFICATE OF SURVEYOR**

STATE OF WYOMING } ss  
COUNTY OF NATRONA }  
I, WILLIAM R. FENNER, A REGISTERED PROFESSIONAL LAND SURVEYOR, LICENSE NO. 14328, DO HEREBY CERTIFY THAT THE FOREGOING IS A TRUE AND CORRECT COPY OF THE ORIGINAL SURVEY PLAT AS SUBMITTED TO ME BY THE CLIENT, AND THAT THE PLAT IS THE BEST OF MY KNOWLEDGE AND BELIEF CORRECTLY AND ACCURATELY REPRESENTS SAID SURVEY. ALL DIMENSIONS ARE EXPRESSED IN FEET AND DECIMALS THEREOF AND CORNERS REFERRED TO THE TRUE MERIDIAN, ALL BEING TRUE AND CORRECT TO THE BEST OF MY KNOWLEDGE AND BELIEF.



**CERTIFICATE OF DEDICATION**

STATE OF WYOMING } ss  
COUNTY OF NATRONA }

THE UNDERSIGNED, THE PACIFICA DEVELOPERS WYOMING, LLC, DOES HEREBY CERTIFY THAT THEY ARE THE OWNERS AND PROPRIETORS OF THE FOLLOWING DESCRIBED PARCEL OF LAND, A PARCEL OF LAND SITUATE IN THE NEARWYN OF SECTION 14, T33N., R79W., 6TH P.M., NATRONA COUNTY, WYOMING, BEING MORE PARTICULARLY DESCRIBED AS FOLLOWS: COMMENCING AT THE WEST 1/4 CORNER OF SAID SECTION 14, NOT MONUMENTED;

THENCE S89°02'27\"/>

THE PACIFICA DEVELOPERS WYOMING, LLC  
P.O. BOX 1480  
SHINGLE SPRINGS, CALIFORNIA 95682

STEVE CARLSON - PRESIDENT  
THE FOREGOING INSTRUMENT WAS ACKNOWLEDGED BEFORE ME BY STEVE CARLSON THIS 9<sup>th</sup> DAY OF NOVEMBER, 2004.  
WITNESS MY HAND AND OFFICIAL SEAL  
NOTARY PUBLIC

**APPROVALS**

APPROVED BY THE CITY OF CASPER PLANNING AND ZONING COMMISSION OF CASPER, WYOMING  
THIS 9<sup>th</sup> DAY OF NOVEMBER, 2004.  
ATTEST: David DeBoer CHAIRMAN  
SECRETARY  
APPROVED BY THE CITY COUNCIL OF CASPER, WYOMING BY RESOLUTION NO. 2004-027, DAILY PASSED,  
ADOPTED AND APPROVED THIS 9<sup>th</sup> DAY OF NOVEMBER, 2004.  
ATTEST: W. A. DeLoe CLERK  
INSPECTED AND APPROVED THIS 12<sup>th</sup> DAY OF DECEMBER, 2004.  
INSPECTED AND APPROVED THIS 12<sup>th</sup> DAY OF DECEMBER, 2004.

**THE VILLAGE AT SAGE CREEK ADDITION**

TO THE CITY OF CASPER, WYOMING  
BEING A PORTION OF THE  
NEARWYN OF SECTION 14  
T.33N., R.79W., 6TH P.M.  
NATRONA COUNTY WYOMING

