

CERTIFICATE OF DEDICATION  
STATE OF WYOMING }  
COUNTY OF NATRONA }SS

THE UNDERSIGNED ROBERT MAJURY, DOES HEREBY CERTIFY THAT HE IS THE OWNER AND PROPRIETOR OF THE FOLLOWING DESCRIBED PARCELS OF LAND LOCATED WITHIN SECTION 8, T134N, R79W, 5TH P.M., NATRONA COUNTY, WYOMING, AND MORE SPECIFICALLY A PORTION OF THE CAPSHAW ADDITION TO THE TOWN OF BAR NUNN, WYOMING, BEING MORE PARTICULARLY DESCRIBED AS FOLLOWS:

COMMENCING AT THE NORTHWEST CORNER OF THE MAJURY No. 1 ADDITION TO THE TOWN OF BAR NUNN ALSO BEING THE SOUTHWEST CORNER OF THIS PARCEL, AND THE POINT OF BEGINNING, MONUMENTED BY A BRASS CAP:

THENCE NORTH 07°27' E, ALONG THE WEST LINE OF THE PARCEL, AND THE WEST LINE OF THE E1/2/4 OF SAID SECTION 8, A DISTANCE OF 461.00 FEET TO THE NORTHWEST CORNER OF THE PARCEL, MONUMENTED BY A BRASS CAP.

THENCE SOUTH 72°27' E, ALONG THE NORTH LINE OF THE PARCEL, ALSO BEING THE NORTH LINE OF LOT 5, BLOCK 5, A DISTANCE OF 124.32 FEET TO THE NORTHEAST CORNER OF SAID LOT 5, LOCATED ON THE WEST LINE OF INTERLOCK DRIVE, MONUMENTED BY A BRASS CAP.

THENCE NORTH 27° E, ALONG THE WEST LINE OF INTERLOCK DRIVE, A DISTANCE OF 24.00 FEET TO A POINT MONUMENTED BY A BRASS CAP.

THENCE SOUTH 27° E, ALONG THE NORTH LINE OF THE PARCEL, A DISTANCE OF 22.93 FEET TO THE NORTHEAST CORNER OF THE PARCEL, LOCATED ON THE WEST LINE OF TOKAYIA TRAIL, AND THE WEST LINE OF THE BAR NUNN INDUSTRIAL CENTER ADDITION, MONUMENTED BY A BRASS CAP.

THENCE SOUTH 17° W, ALONG THE EAST LINE OF THE PARCEL, ALSO BEING THE WEST LINE OF TOKAYIA TRAIL, AND THE WEST LINE OF THE BAR NUNN INDUSTRIAL CENTER ADDITION, A DISTANCE OF 460.00 FEET TO THE SOUTHWEST CORNER OF THE PARCEL, LOCATED ON THE NORTH LINE OF MAJURY No. 1 ADDITION, MONUMENTED BY A BRASS CAP.

THENCE NORTH 27° W, ALONG THE SOUTH LINE OF THE PARCEL, AND THE NORTH LINE OF THE MAJURY No. 1 ADDITION, A DISTANCE OF 23.62 FEET TO THE POINT OF BEGINNING.

THE ABOVE DESCRIBED TRACT OF LAND CONTAINS 27.291 ACRES, MORE OR LESS, AND IS SUBJECT TO ANY RIGHTS-OF-WAY AND/OR EASEMENTS, RESERVATIONS AND ENCUMBRANCES WHICH HAVE BEEN LEGALLY ACQUIRED.

ALONG WITH:

A PARCEL SITUATE WITHIN THE SW/4E1/4 AND THE NW/4E1/4 OF SAID SECTION 8, T134N, R79W, 5TH P.M., NATRONA COUNTY, WYOMING, ALSO BEING A PORTION OF THE CAPSHAW ADDITION TO THE TOWN OF BAR NUNN, WYOMING, BEING MORE PARTICULARLY DESCRIBED AS FOLLOWS:

COMMENCING AT THE NORTHWEST CORNER OF MAJURY No. 1 ADDITION TO THE TOWN OF BAR NUNN ALSO BEING THE SOUTHWEST CORNER OF THIS PARCEL, AND BEING THE POINT OF BEGINNING, MONUMENTED BY A BRASS CAP:

THENCE NORTH 17° W, ALONG THE SOUTH LINE OF THE PARCEL, AND THE NORTH LINE OF THE MAJURY No. 1 ADDITION, A DISTANCE OF 112.25 FEET TO THE SOUTHWEST CORNER OF THE PARCEL, LOCATED ON THE EAST LINE OF TOKAYIA TRAIL, ALSO BEING THE EAST LINE OF THE BAR NUNN INDUSTRIAL CENTER ADDITION TO THE TOWN OF BAR NUNN, MONUMENTED BY A BRASS CAP.

THENCE NORTH 27° E, ALONG THE WEST LINE OF THE PARCEL, ALSO BEING THE EAST LINE OF TOKAYIA TRAIL, AND THE EAST LINE OF THE BAR NUNN INDUSTRIAL CENTER ADDITION, A DISTANCE OF 124.34 FEET TO THE NORTHWEST CORNER OF THE PARCEL, MONUMENTED BY A BRASS CAP.

THENCE SOUTH 27° E, ALONG THE NORTH LINE OF THE PARCEL, A DISTANCE OF 110.32 FEET TO THE NORTHEAST CORNER OF THE PARCEL, LOCATED ON THE EAST LINE OF THE SW/4E1/4 OF SAID SECTION 8, MONUMENTED BY A BRASS CAP.

THENCE SOUTH 17° W, ALONG THE EAST LINE OF SAID SW/4E1/4, A DISTANCE OF 41.98 FEET TO THE C-17/16 CORNER OF SAID SECTION 8, MONUMENTED BY A BRASS CAP.

THENCE SOUTH 27° W, ALONG THE EAST LINE OF THE NW/4E1/4 OF SAID SECTION 8, A DISTANCE OF 124.99 FEET TO THE POINT OF BEGINNING.

THE ABOVE DESCRIBED TRACT OF LAND CONTAINS 3.228 ACRES, MORE OR LESS, AND IS SUBJECT TO ANY RIGHTS-OF-WAY AND/OR EASEMENTS, RESERVATIONS AND ENCUMBRANCES WHICH HAVE BEEN LEGALLY ACQUIRED.

THE TRACT OF LAND, AS IT APPEARS ON THIS PLAT, IS DEMONSTRATED WITH THE FREE CONSENT AND IN ACCORDANCE WITH THE DESIRES OF THE UNDERSIGNED OWNERS AND PROPRIETORS. THE NAME OF THE SUBDIVISION SHALL BE VISTA HILLS NO. 1 ADDITION TO THE TOWN OF BAR NUNN, AND THE OWNERS HEREBY GRANT TO THE PUBLIC AND PRIVATE UTILITIES COMPANIES AN EASEMENT AND LICENSE TO LOCATE, CONSTRUCT, USE AND MAINTAIN CONDUITS, LINES, WELLS AND PIPES, ANY OR ALL OF THEM, OVER AND ALONG THE STRIPS OF LAND BORNED UTILITY EASEMENT AS SHOWN ON THIS PLAT. ALL ROADS AND STREETS AS SHOWN HEREON ARE HEREBY DEDICATED TO THE USE OF THE PUBLIC.

ROBERT MAJURY  
P.O. BOX 50790  
CASPER, WYOMING 82605

THE FOREGOING INSTRUMENT WAS ACKNOWLEDGED BEFORE ME BY ROBERT MAJURY, OWNER THIS 23<sup>RD</sup> DAY OF FEBRUARY, 2011.  
WITNESS MY HAND AND OFFICIAL SEAL  
AT COMMISSION EXPENSES \$100.00



ROBERT MAJURY  
NOTARY PUBLIC



APPROVALS

APPROVED BY THE TOWN OF BAR NUNN PLANNING COMMISSION OF BAR NUNN, WYOMING  
THIS 17<sup>TH</sup> DAY OF FEBRUARY, 2011.

ATTEST: *[Signature]*  
SECRETARY

*[Signature]*  
COMMISSION CHAIRMAN

APPROVED BY THE TOWN COUNCIL OF THE TOWN OF BAR NUNN, WYOMING BY RESOLUTION NO. 2011-07, DULY PASSED, ADOPTED AND APPROVED THIS 16<sup>TH</sup> DAY OF MARCH, 2011.

ATTEST: *[Signature]*  
TOWN CLERK

*[Signature]*  
MAYOR

INSPECTED AND APPROVED THIS 07<sup>TH</sup> DAY OF MARCH, 2011.

*[Signature]*  
TOWN ENGINEER

RECORDED

FILED FOR RECORD IN THE OFFICE OF THE COUNTY CLERK OF NATRONA COUNTY, WYOMING THIS 16<sup>TH</sup> DAY OF MARCH, 2011.

INSTRUMENT NO. 905506  
*[Signature]*  
COUNTY CLERK



By Term of Office Expires  
January 12, 2013

NOTES

1. ERROR OF CLOSURE EXCEEDS 1:1,029,875 - PARCEL #1 AND 1:340,203 - PARCEL #2.
2. BASIS OF BEARINGS IS GEODETIC BASED ON GPS.

CERTIFICATE OF SURVEYOR

STATE OF WYOMING }  
COUNTY OF NATRONA }SS

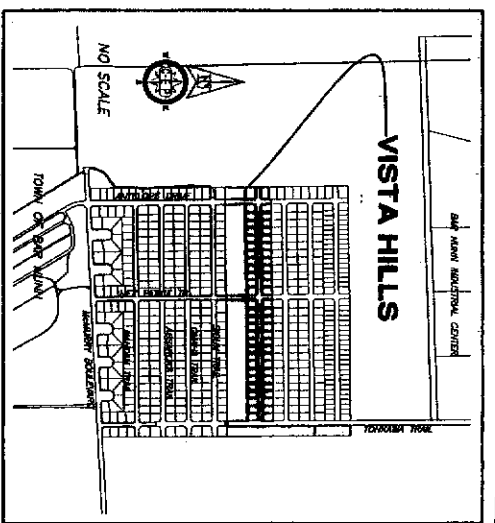
I, WILLIAM R. FERBRINGER, A REGISTERED PROFESSIONAL LAND SURVEYOR, LICENSE NO. 5528, DO HEREBY CERTIFY THAT THIS PLAT WAS MADE FROM NOTES TAKEN DURING AN ACTUAL SURVEY MADE UNDER MY DIRECT SUPERVISION IN JANUARY, 2011, AND THAT THIS PLAT, TO THE BEST OF MY KNOWLEDGE AND BELIEF, ACCURATELY REPRESENTS THE TRUE AND CORRECT DIMENSIONS AND COURSES EXPRESSED IN FEET AND DECIMALS THEREOF AND COURSES REFERRED TO THE TRUE MERIDIAN. ALL BEING TRUE AND CORRECT TO THE BEST OF MY KNOWLEDGE AND BELIEF.



*[Signature]*  
WILLIAM R. FERBRINGER  
NOTARY PUBLIC



THE FOREGOING INSTRUMENT WAS ACKNOWLEDGED BEFORE ME BY WILLIAM R. FERBRINGER THIS 14<sup>TH</sup> DAY OF MARCH, 2011.  
WITNESS MY HAND AND OFFICIAL SEAL  
AT COMMISSION EXPENSES \$100.00



VICINITY MAP

905506  
NATRONA COUNTY CLERK  
Renee Little  
Mar 16, 2011 10:30:42 AM  
Page: 2  
File: 905506.dwg  
User: R. Little

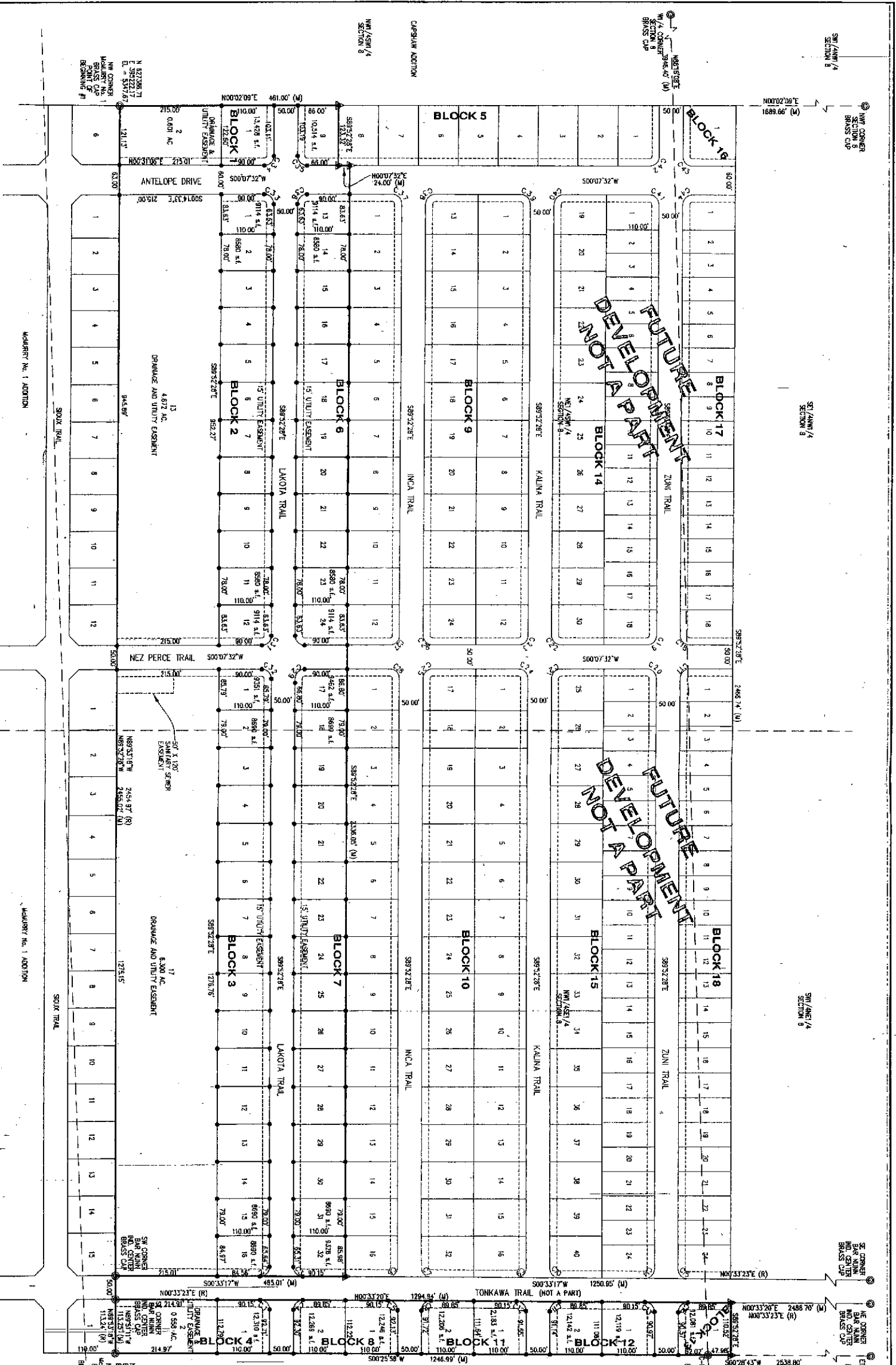


cepi  
Civil Engineering Professionals, Inc.  
6000 Enterprise Drive, Casper, WY 82409  
Phone 307.256.4346 Fax 307.256.0103  
www.cepi-wy.com

VACATION AND REPLAT OF  
A PORTION OF THE CAPSHAW ADDITION  
TO THE TOWN OF BAR NUNN, WYOMING

FINAL PLAT OF THE  
VISTA HILLS NO. 1 ADDITION

TO THE TOWN OF BAR NUNN, WYOMING  
BEING A PORTION OF THE  
N1/2S1/2 AND THE SW/4NE1/4 OF SECTION 8  
T.34N., R.79W., 5TH P.M.  
NATRONA COUNTY WYOMING  
SHEET 1 OF 2

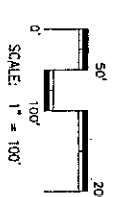


FUTURE DEVELOPMENT NOT A PART

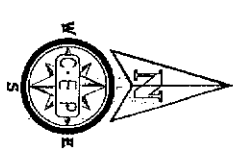
FUTURE DEVELOPMENT NOT A PART

CHORD TABLE

CHORD NUMBER	DELTA ANGLE	LENGTH	CHORD BEARING	CHORD LENGTH
C1	20.00°	89.3415'	S16.07°28'W	28.18'
C2	20.00°	89.3415'	S16.07°28'W	28.18'
C3	20.00°	89.3415'	S16.07°28'W	28.18'
C4	20.00°	89.3415'	S16.07°28'W	28.18'
C5	20.00°	89.3415'	S16.07°28'W	28.18'
C6	20.00°	89.3415'	S16.07°28'W	28.18'
C7	20.00°	89.3415'	S16.07°28'W	28.18'
C8	20.00°	89.3415'	S16.07°28'W	28.18'
C9	20.00°	89.3415'	S16.07°28'W	28.18'
C10	20.00°	89.3415'	S16.07°28'W	28.18'
C11	20.00°	89.3415'	S16.07°28'W	28.18'
C12	20.00°	89.3415'	S16.07°28'W	28.18'
C13	20.00°	89.3415'	S16.07°28'W	28.18'
C14	20.00°	89.3415'	S16.07°28'W	28.18'
C15	20.00°	89.3415'	S16.07°28'W	28.18'
C16	20.00°	89.3415'	S16.07°28'W	28.18'
C17	20.00°	89.3415'	S16.07°28'W	28.18'
C18	20.00°	89.3415'	S16.07°28'W	28.18'
C19	20.00°	89.3415'	S16.07°28'W	28.18'
C20	20.00°	89.3415'	S16.07°28'W	28.18'
C21	20.00°	89.3415'	S16.07°28'W	28.18'
C22	20.00°	89.3415'	S16.07°28'W	28.18'
C23	20.00°	89.3415'	S16.07°28'W	28.18'
C24	20.00°	89.3415'	S16.07°28'W	28.18'
C25	20.00°	89.3415'	S16.07°28'W	28.18'
C26	20.00°	89.3415'	S16.07°28'W	28.18'
C27	20.00°	89.3415'	S16.07°28'W	28.18'
C28	20.00°	89.3415'	S16.07°28'W	28.18'
C29	20.00°	89.3415'	S16.07°28'W	28.18'
C30	20.00°	89.3415'	S16.07°28'W	28.18'
C31	20.00°	89.3415'	S16.07°28'W	28.18'
C32	20.00°	89.3415'	S16.07°28'W	28.18'
C33	20.00°	89.3415'	S16.07°28'W	28.18'
C34	20.00°	89.3415'	S16.07°28'W	28.18'
C35	20.00°	89.3415'	S16.07°28'W	28.18'
C36	20.00°	89.3415'	S16.07°28'W	28.18'
C37	20.00°	89.3415'	S16.07°28'W	28.18'
C38	20.00°	89.3415'	S16.07°28'W	28.18'
C39	20.00°	89.3415'	S16.07°28'W	28.18'
C40	20.00°	89.3415'	S16.07°28'W	28.18'
C41	20.00°	89.3415'	S16.07°28'W	28.18'
C42	20.00°	89.3415'	S16.07°28'W	28.18'
C43	20.00°	89.3415'	S16.07°28'W	28.18'
C44	20.00°	89.3415'	S16.07°28'W	28.18'



SCALE: 1" = 100'



LEGEND

- ▲ SET BRASS CAP
- SET MONUMENT 5/8" REBAR & ALUMINUM CAP
- FOUND MONUMENT AS NOTED



VACATION AND REPLAT OF A PORTION OF THE CAPSHAW ADDITION TO THE TOWN OF BAR NUNN, WYOMING

FINAL PLAT OF THE

**VISTA HILLS NO. 1 ADDITION**

AS

TO THE TOWN OF BAR NUNN, WYOMING

BEING A PORTION OF SECTION 8 N1/2S1/2 AND THE SWNE 1/4 OF SECTION 8 T.34N., R.79W., 6TH P.M.

NATRONA COUNTY WYOMING

SHEET 2 OF 2



Chad A. Smith  
Professional Engineer  
State of Wyoming  
License No. 11124