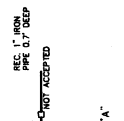
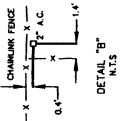
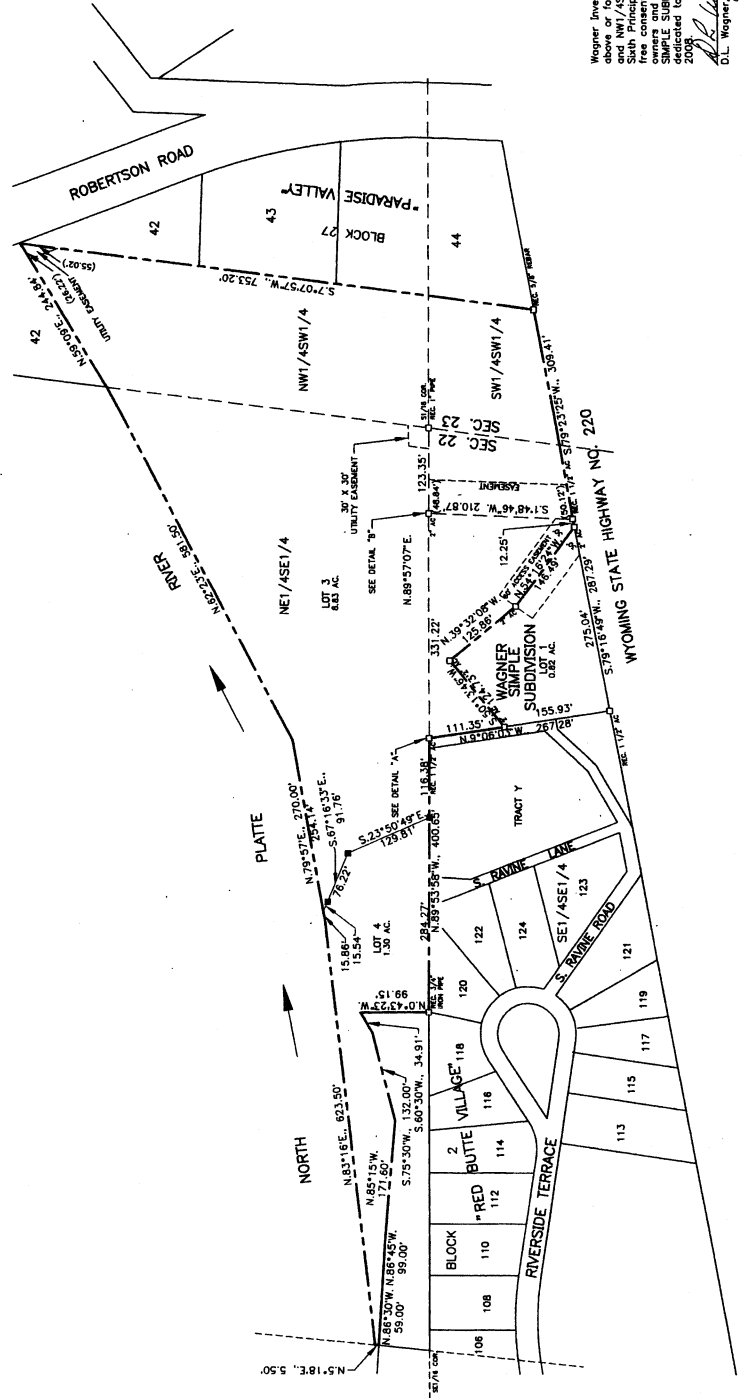


PLAT OF
"WAGNER SIMPLE SUBDIVISION, LOTS 3 & 4"
A REPLAT OF LOT 2, WAGNER SIMPLE SUBDIVISION
A SUBDIVISION OF PORTIONS OF
THE NE1/4SE1/4, SE1/4SE1/4 SECTION 22
AND THE NW1/4SW1/4, SW1/4SW1/4, SECTION 23
TOWNSHIP 33 NORTH, RANGE 80 WEST
SIXTH PRINCIPAL MERIDIAN
NATRONA COUNTY, WYOMING



CERTIFICATE OF OWNER
 Wagner Investments LLC, a Wyoming Limited Liability Company, hereby certifies that the above or foregoing subdivision of a portion of the NE1/4SE1/4, SE1/4SE1/4 Section 22, and NW1/4SW1/4, SW1/4SW1/4 Section 23, Township 33 North, Range 80 West of the Sixth Principal Meridian, Natrona County, Wyoming as it appears on the plat is with the owners and proprietors of said lands, the name of said subdivision shall be "WAGNER SIMPLE SUBDIVISION, LOTS 3 & 4" and, the streets shown within the plat are hereby dedicated to public use, dated at Casper, Wyoming this 27th day of October, 2008.
 D.L. Wagner, Partner *D.L. Wagner*
 Brian L. Wagner, Partner *Brian L. Wagner*

STATE OF WYOMING } ss
 COUNTY OF NATRONA }
 The foregoing instrument was acknowledged before me by D.L. Wagner, Brian L. Wagner and Shawn L. Wagner, PARTNERS
 Witness my hand and official seal.
 My commission expires JUNE 20, 2022
Shawn L. Wagner
 Shawn L. Wagner, Notary Public



CERTIFICATE OF APPROVAL

STATE OF WYOMING } ss
 COUNTY OF NATRONA }
 I, do hereby certify that this record of survey has been examined by me and found to comply with the regulations for Natrona County, Wyoming and is therefore, approved for recording.
 COUNTY DEVELOPMENT DIRECTOR/DATE *Paul R. Swanson*
 COUNTY HEALTH OFFICER/DATE *Paul R. Swanson*
 Filed for record in the office of the County Clerk of Natrona County, Wyoming on this 27th day of October, 2008.
 County Clerk *Shawn L. Wagner*

CERTIFICATE OF SURVEYOR
 I, Paul R. Swanson, a registered professional land surveyor, License No. 10000, do hereby certify that this record of survey was prepared and verified by me or under my direct supervision during the month of January, 2008, and that this plat, to the best of my knowledge and belief, correctly and accurately represents said survey.



LEGEND
 O RECORDED BRASS CAP
 X 3/8" REBAR WITH ALUMINUM CAP
 N. 89°49'14"E., 194.79' MEASURED
 SUBDIVISION BOUNDARY

