

CERTIFICATE OF DEDICATION

STATE OF WYOMING } SS
COUNTY OF NATRONA }

856634

WYOMING COUNTY CLERK, WYOMING
Room 1118
June 4, 2008 03:45:12 PM
Page 1 of 2
City of Casper

THE UNDERSIGNED, NORTHEAST COMMUNITY ACTION PROGRAMS OF WYOMING (NONCAP) AND THE CITY OF CASPER, WYOMING, HAVE HEREBY DEDICATED TO THE PUBLIC THE FOLLOWING DESCRIBED TRACTS OF LAND, A PORTION OF LAND SITUATE IN THE NW1/4SW1/4 OF SECTION 1 AND THE NE1/4SW1/4 OF SECTION 2, 13.5N, R.79W, 6TH P.M., NATRONA COUNTY, WYOMING, BEING MORE PARTICULARLY DESCRIBED AS FOLLOWS:

COMMENCING AT THE SW1/8 CORNER COMMON TO SAID SECTIONS 1 AND 2, MONUMENTED BY A BRASS CAP;

THENCE NORTH25°57'37" E, ALONG THE WEST LINE OF SAID SECTION 1, A DISTANCE OF 234.52 FEET TO THE SOUTHWEST CORNER OF THE PARCEL ALSO BEING THE SOUTHWEST CORNER OF LOT 3, TERRACE ADDITION NO. 2, MONUMENTED BY A BRASS CAP AND BEING THE POINT OF BEGINNING;

THENCE NORTH25°57'37" E, ALONG THE WEST LINE OF SAID SECTION 1 AND THE EAST LINE OF SAID LOT 3, TERRACE ADDITION NO. 2, A DISTANCE OF 337.18 FEET TO A POINT MONUMENTED BY A BRASS CAP;

THENCE ALONG THE EAST LINE OF SAID LOT 3 AND A CURVE TO THE RIGHT HAVING A RADIUS OF 155.00 FEET, THROUGH A CENTRAL ANGLE OF 22°11'18", A DISTANCE OF 131.47 FEET, HAVING A CHORD BEARING OF N19°20'30" W, A DISTANCE OF 138.62 FEET TO THE NORTHEAST CORNER OF SAID LOT 3, TERRACE ADDITION NO. 2, MONUMENTED BY A BRASS CAP;

THENCE N79°29'10" E, A DISTANCE OF 45.07 FEET TO A POINT MONUMENTED BY A BRASS CAP;

THENCE N79°29'10" E, A DISTANCE OF 146.51 FEET TO THE NORTHEAST CORNER OF THE PARCEL, MONUMENTED BY A HIGHWAY MONUMENT;

THENCE S89°39'59" E, ALONG THE INTERSTATE 25 RIGHT-OF-WAY LINE, A DISTANCE OF 119.66 FEET TO A POINT MONUMENTED BY A HIGHWAY MONUMENT;

THENCE S09°17'12" E, ALONG THE INTERSTATE 25 RIGHT-OF-WAY LINE, A DISTANCE OF 162.64 FEET TO A POINT MONUMENTED BY A HIGHWAY MONUMENT;

THENCE S79°29'30" W, A DISTANCE OF 646.17 FEET TO A POINT LOCATED ON THE EAST LINE OF WALSH DRIVE, MONUMENTED BY A BRASS CAP;

THENCE NORTH55°57'37" E, ALONG THE EAST LINE OF WALSH DRIVE, A DISTANCE OF 68.50 FEET TO A POINT MONUMENTED BY A BRASS CAP;

THENCE S89°23'30" W, ALONG THE NORTH LINE OF THE POST OFFICE ROAD, A DISTANCE OF 308.50 FEET TO THE POINT OF BEGINNING.

THE ABOVE DESCRIBED TRACTS OF LAND CONTAINS 3.86 ACRES (262,306 S.F.), MORE OR LESS, AND IS SUBJECT TO ANY RIGHTS-OF-WAY AND/OR EASEMENTS, INTERESTS AND ENCUMBRANCES WHICH HAVE BEEN LEGALLY ACQUIRED.

THE TRACT OF LAND, AS IT APPEARS ON THIS PLAT, IS IDENTIFIED WITH THE FREE CONSENT AND IN ACCORDANCE WITH THE TERMS AND CONDITIONS OF THE UNDERSIGNED OWNERS AND PROPRIETORS. THE NAME OF THE SUBDIVISION SHALL BE "WALSH DRIVE ADDITION" AND THE TRACT SHALL BE OPEN TO THE PUBLIC AND PRIVATE UTILITY COMPANIES AND PERSONS AND TO LOCATE, CONSTRUCT, USE AND MAINTAIN CONDUITS, TRENCHES, PIPES, CABLES, AND OTHER UTILITIES AND STRUCTURES IN ACCORDANCE WITH THE NECESSARY EASEMENT AS SHOWN ON THIS PLAT. ALL ROADS AND STREETS AS SHOWN HEREON SHALL BE DEDICATED TO THE USE OF THE PUBLIC.

NORTHWEST COMMUNITY ACTION PROGRAMS OF WYOMING (NONCAP)

345 N. WALSH DRIVE
CASPER, WYOMING 82501

THE FOREGOING INSTRUMENT WAS ACKNOWLEDGED BEFORE ME BY CHRISTOPHER BOSTON, DIRECTOR OF THE CITY OF CASPER, WYOMING, AND PAUL C. BERTOLIO, MAYOR OF THE CITY OF CASPER, WYOMING, ON THIS 30th DAY OF September, 2008.

WITNESS MY HAND AND OFFICIAL SEAL OF OFFICE, THIS 30th DAY OF September, 2008.

NOTARY PUBLIC
Susan M. Anthony

CITY OF CASPER
200 NORTH DAVID STREET
CASPER, WYOMING 82501

PAUL C. BERTOLIO - MAYOR
ATTEST: V.H. McDONALD - CITY CLERK
THIS 30th DAY OF September, 2008.

WITNESS MY HAND AND OFFICIAL SEAL OF OFFICE, THIS 30th DAY OF September, 2008.

NOTARY PUBLIC
Diana M. C. Boring

CERTIFICATE OF SURVEYOR
STATE OF WYOMING
COUNTY OF NATRONA } SS

WILLIAM F. FEHRINGER, A REGISTERED PROFESSIONAL LAND SURVEYOR, LICENSE NO. 5528, DO HEREBY CERTIFY THAT I AM THE SURVEYOR OF RECORD FOR THIS INSTRUMENT AND THAT I HAVE DIRECT SUPERVISION IN JULY AND AUGUST, 2008, AND THAT THIS PLAT IS THE BEST OF MY KNOWLEDGE AND BELIEF, CORRECTLY AND ACCURATELY REPRESENTS SAID SURVEY, AND THAT THE CONDITIONS ARE EXPRESSED AND BELIEF, CORRECT TO THE BEST OF MY KNOWLEDGE AND BELIEF.

THE FOREGOING INSTRUMENT WAS ACKNOWLEDGED BEFORE ME BY THE SURVEYOR, FEHRINGER THIS 24th DAY OF November, 2008.

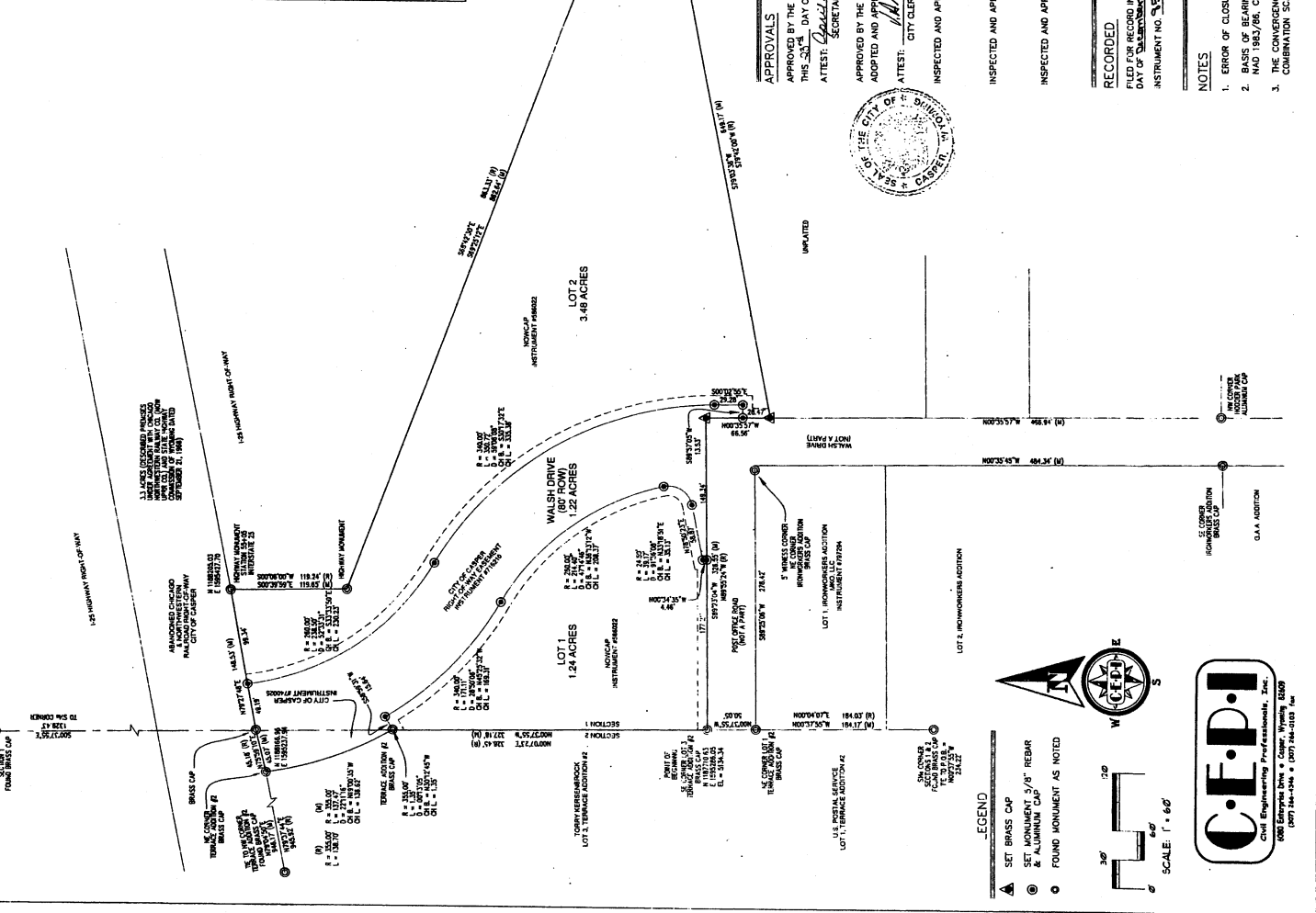
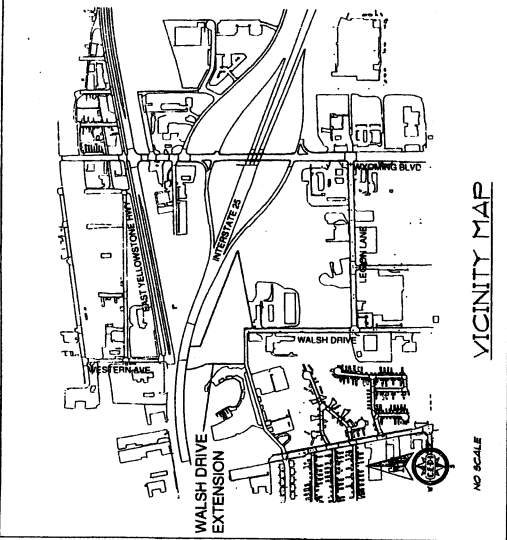
WITNESS MY HAND AND OFFICIAL SEAL OF OFFICE, THIS 24th DAY OF November, 2008.

NOTARY PUBLIC
James S. Hall

WALSH DRIVE ADDITION

TO THE CITY OF CASPER, WYOMING

BEING A PORTION OF THE
NW1/4SW1/4 SECTION 1 & NE1/4SEC1/4 SECTION 2
T.135N., R.79W., 6TH P.M.,
NATRONA COUNTY WYOMING



APPROVED BY THE CITY OF CASPER PLANNING AND ZONING COMMISSION OF CASPER, WYOMING
THIS 30th DAY OF September, 2008.
ATTEST: *Paul C. Bertolio*
CHAIRMAN
SECRETARY

APPROVED BY THE CITY COUNCIL OF CASPER, WYOMING BY ORDINANCE NO. 33-02, DULY PASSED,
ADOPTED AND APPROVED THIS 30th DAY OF September, 2008.
ATTEST: *Paul C. Bertolio*
MAYOR
CITY CLERK

INSPECTED AND APPROVED THIS 24th DAY OF November, 2008.
William F. Fehring
CITY ENGINEER

INSPECTED AND APPROVED THIS 24th DAY OF November, 2008.
James S. Hall
CITY SURVEYOR

INSPECTED AND APPROVED THIS 4th DAY OF December, 2008.
James S. Hall
COUNTY SURVEYOR

RECORDED
FILED FOR RECORD IN THE OFFICE OF THE COUNTY CLERK OF NATRONA COUNTY, WYOMING THIS 4th
DAY OF December, 2008.
INSTRUMENT NO. 856634
Renee White
COUNTY CLERK

- NOTES
1. ERROR OF CLOSURE EXCEEDS 1:821,455.
 2. BASIS OF BEARINGS IS THE WYOMING STATE PLANE COORDINATE SYSTEM, EAST CENTRAL ZONE, NAD 1983/86, CITY OF CASPER DATUM.
 3. THE CONVERGENCE ANGLE AT THE POINT OF BEGINNING IS 0°0'3'03.93", AND THE COMBINATION SCALE FACTOR IS 0.999793.

