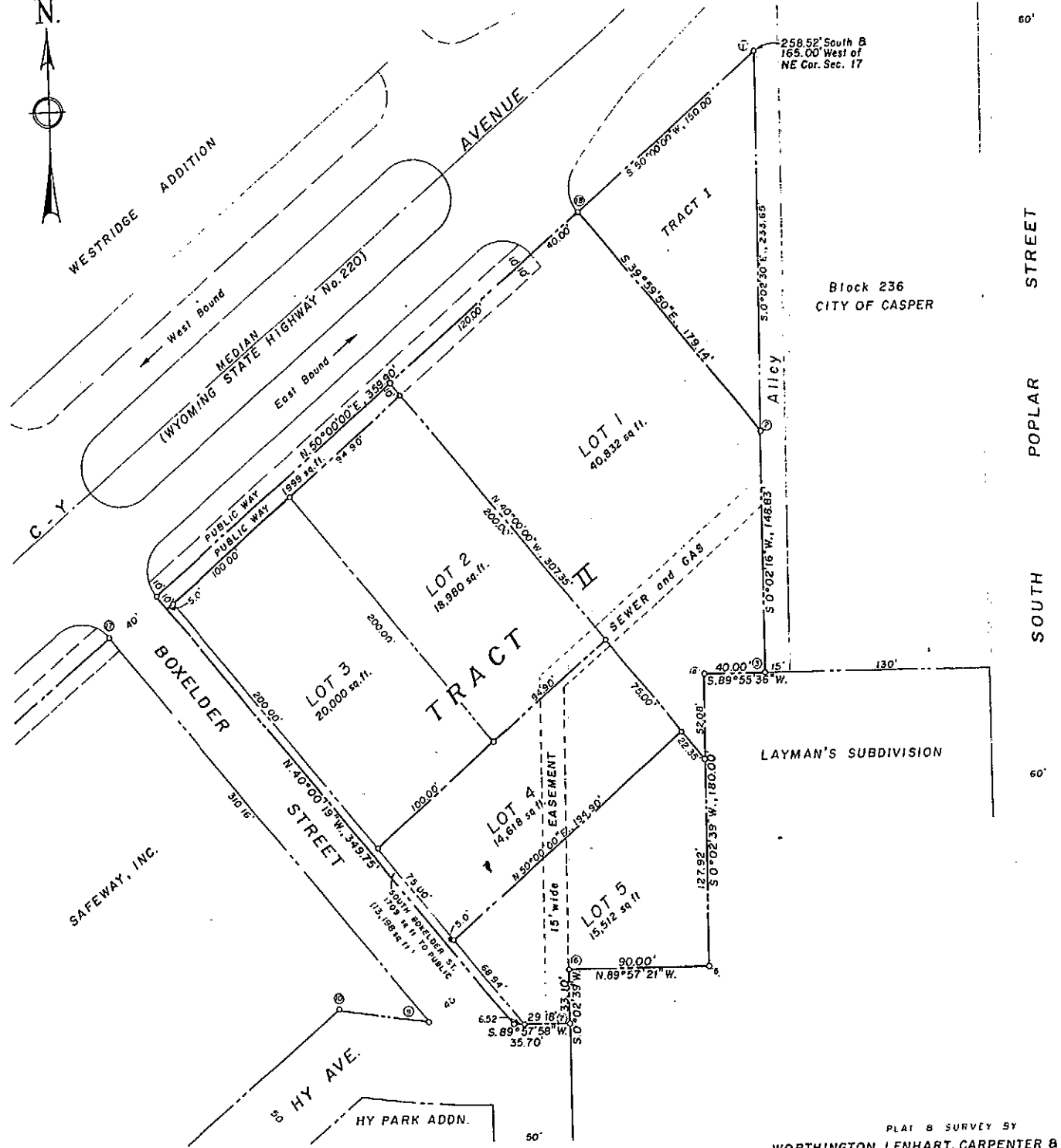


224/110



8 | 9  
17 | 16



Block 236  
CITY OF CASPER

LAYMAN'S SUBDIVISION

TRACT II  
WEST PLAZA ADDITION  
CITY OF CASPER, WYOMING  
SCALE: 1" = 40'

PLAT & SURVEY BY  
WORTHINGTON, LENHART, CARPENTER & LADD, INC.  
200 SOUTH LOWELL STREET, CASPER, WYOMING  
W.C. No. 9-24-BB      JULY 14th 1968

PLAT OF  
SUBDIVISION OF TRACT II  
WEST PLAZA  
AN ADDITION TO THE CITY OF CASPER, WYOMING  
BEING A PORTION OF  
THE E 1/2 NE 1/4, SECTION 17, T.33 N., R.79 W., 6th P.M.  
NATRONA COUNTY, WYOMING  
SCALE: 1" = 40'

CERTIFICATE OF PLATTING

321 CORPORATION, a Wyoming Corporation, hereby certifies that the above and foregoing subdivision of "TRACT II," an Addition to the City of Casper, Wyoming, located in the E 1/2 NE 1/4, Section 17, Township 33 North, Range 79 West of the 6th P.M., Natrona County, Wyoming and being more particularly described as follows:  
Beginning at Corner No. 18, the northwesterly, front and common corner of Tracts I and II of said West Plaza, an Addition to the City of Casper, Wyoming; said point and corner being located from the northeast corner of said Section 17 of South 2nd Street, West 165.00 feet and thence S. 50° 00' 00" W., 150.00 feet. Thence from said Corner No. 18 and the point of beginning and the line common to Tracts I and II of said Addition, S. 39° 59' 50" E., 179.14 feet to Corner No. 2 of said Addition; thence S. 02° 16' W., 148.83 feet to Corner No. 3; thence S. 89° 55' 36" W., 40.00 feet to Corner No. 4; thence S. 0° 02' 39" W., 180.00 feet to Corner No. 5; thence N. 89° 57' 21" W., 90.00 feet to Corner No. 6; thence S. 0° 02' 39" W., 33.10 feet to Corner No. 7; thence S. 89° 57' 58" W., 35.70 feet to a point in the easterly line of Boxelder Street; thence along the easterly line of said S. 89° 57' 58" W., 349.75 feet to the northwesterly corner of said Tract II; thence along the northwesterly and front line of said Tract II, N. 50° 00' 00" E., 359.90 feet to said Corner No. 18 and the northwesterly corner thereof and the point of beginning and containing 113,650 square feet, more or less;

as appears on this plat is with the free consent and in accordance with the desires of the undersigned owner and proprietor and the name of said subdivision shall be "SUBDIVISION OF TRACT II, WEST PLAZA", an Addition to City of Casper, Wyoming. IN WITNESS WHEREOF, this certificate has been executed by 321 CORPORATION, a Wyoming Corporation, this 12th day of October, 1968.  
ATTEST: *Mary Ellen Jenkins* SECRETARY  
BY: *A. T. Cowperthwaite* PRESIDENT

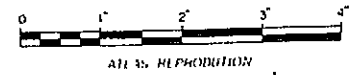
STATE OF COLORADO  
COUNTY OF DENVER  
On this 12th day of Oct., 1968, before me personally appeared A. T. Cowperthwaite, to me personally known, who, first duly sworn, did say that he is the president of 321 CORPORATION, a Wyoming Corporation, that the seal affixed to the instrument is the corporate seal of said corporation, and that said instrument was signed and sealed in behalf of said corporation authority of its Board of Directors; and said A. T. Cowperthwaite acknowledged said instrument to be the free and deed of said corporation.  
My commission expires: 8/1/70  
*M. L. Kahl* NOTARY PUBLIC

CERTIFICATE OF SURVEYOR

STATE OF WYOMING  
COUNTY OF NATRONA  
I, H. L. Worthington, of Casper, Wyoming, hereby certify that this plat was prepared from notes taken during actual survey by E. C. Lenhart, Professional Engineer and Land Surveyor, Wyoming Registration No. 520 P. E. & L. S., during the months of March, 1964 and by myself during the months of August and October, 1968 and that such plat correctly represents such surveys and is in fact to the best of my knowledge and belief, the foregoing subdivision is well and properly staked and is in conformance with No. 1366 - A, City of Casper; all dimensions are expressed in feet and decimals thereof and bearings referred to the true meridian.  
Wyoming Registration No. 142 L. S.  
Subscribed in my presence and sworn to before me this 14th day of October, 1968.  
My commission expires: January 5, 1969  
*H. L. Worthington* SURVEYOR  
*James J. Jenkins* NOTARY PUBLIC

APPROVALS

Approved by the Community Planning Commission of Casper, Wyoming, this 14th day of Oct., 1968 and forwarded to the City Council of Casper, Wyoming with recommendation that said plat be approved.  
*Ann M. ...* SECRETARY  
*...* CHAIRMAN OF THE BOARD  
Approved by the City Council, City of Casper, Wyoming by Resolution (Ordinance) No. ... duly passed, adopted approved on the ... day of ... 1968.  
*...* MAYOR  
ATTEST: *...* CITY CLERK  
Inspected and approved on the 28 day of Oct., 1968  
*James J. Jenkins* CITY ENGINEER  
Approved by Board of County Commissioners of Natrona County, Wyoming by Resolution duly passed on the ... day of ... 1968.  
*...* CHAIRMAN OF THE BOARD  
ATTEST: *...* COUNTY CLERK  
Inspected and approved on the ... day of ... 1968  
*...* COUNTY SURVEYOR



Recorded in the Office of the Clerk of Natrona County, Wyoming this ... day of ... 1968. COUNTY