

AMENDED PLAT OF WESTVIEW ADDITION 249/664

TO THE CITY OF CASPER,
NATRONA COUNTY, WYOMING

CERTIFICATE OF DEDICATION

We, the undersigned **ELBERT L. HOWE** and **VERNA MADGE HOWE**, husband and wife, hereby certify that we are the owners of the above and foregoing subdivision of a portion of the SW 1/4 NW 1/4 of Section 17, T.33N., R.79W. of the 6th P.M., Natrona County, Wyoming, being more particularly described as follows:

The point of beginning is referenced to the West 1/4 corner of Section 17, a standard brass cap monument by the following traverse: From said W. 1/4 corner of Section 17, proceed N.00°03'W. along the line common to Sections 17 and 18 a distance of 148.50 feet to the point of beginning, said point being a standard Wyoming State Highway Monument concrete post with brass cap and being the NW corner of said Westview Addition.

From said point of beginning, proceed S.22°19'E. a distance of 158.20 feet to a point; thence N.87°56'E. a distance of 300.00 feet to a point; thence N.00°03'W. a distance of 306.50 feet to a point, said point being on the southerly right-of-way boundary of Wyoming State Highway No. 220; thence S.64°34'W. and along said right-of-way boundary a distance of 398.15 feet to the point of beginning.

Said Addition herein described contains 1.777 acres more or less; and the perimeter corners are all marked with standard brass caps monuments set on 2" pipe;

and that the streets shown hereon and described as follows:

The point of beginning being the Northwest corner of said Westview Addition; thence S.22°19'E. a distance of 158.20 feet to a point; thence N.87°56'E. a distance of 300.00 feet to a point; thence N.00°03'W. a distance of 25.02 feet to a point; thence S.87°56'W. a distance of 288.82 feet to a point; thence N.22°19'W. a distance of 140.01 feet to a point; thence S.64°34'W. a distance of 20.00 feet to the point of beginning, said streets containing 0.24 acres more or less, are hereby dedicated to the use of the public forever;

and that the above and foregoing addition as described herein and as appears on this plat is with the free consent and in accordance with the desires of the undersigned owners and proprietors; that said tract of land shall be known as "AMENDED PLAT OF WESTVIEW ADDITION".

Elbert L. Howe
ELBERT L. HOWE

Verna Madge Howe
VERNA MADGE HOWE

665

STATE OF WYOMING }
COUNTY OF NATRONA }

On this 2nd day of June, 1968 before me personally appeared **ELBERT L. HOWE** and **VERNA MADGE HOWE**, husband and wife, to me personally known as the persons who subscribed their names to the foregoing instrument, did acknowledge that they signed said instrument as their free act and deed. Given under my hand and notarial seal this 2nd day of June, 1968.

My commission expires November 14, 1968
Notary Public *James P. Bachtel*

PLAT APPROVED

Plat approved by the Community Planning Commission of Casper, Wyoming, and forwarded to the City of Casper, Wyoming, this 4th day of June, 1968 with recommendation that said plat be approved.

James P. Bachtel
CHAIRMAN

Thomas P. Bachtel
SECRETARY

CITY COUNCIL, CITY of Casper, Wyoming
Resolution No. 68-23 passed, adopted and approved on the 16th day of September, 1968.

William J. Matthews
MAYOR

BOARD OF COUNTY COMMISSIONERS, Natrona County, Wyoming; By Resolution duly passed on the 19th day of October, 1968. 75

John F. Burke
CHAIRMAN OF THE BOARD

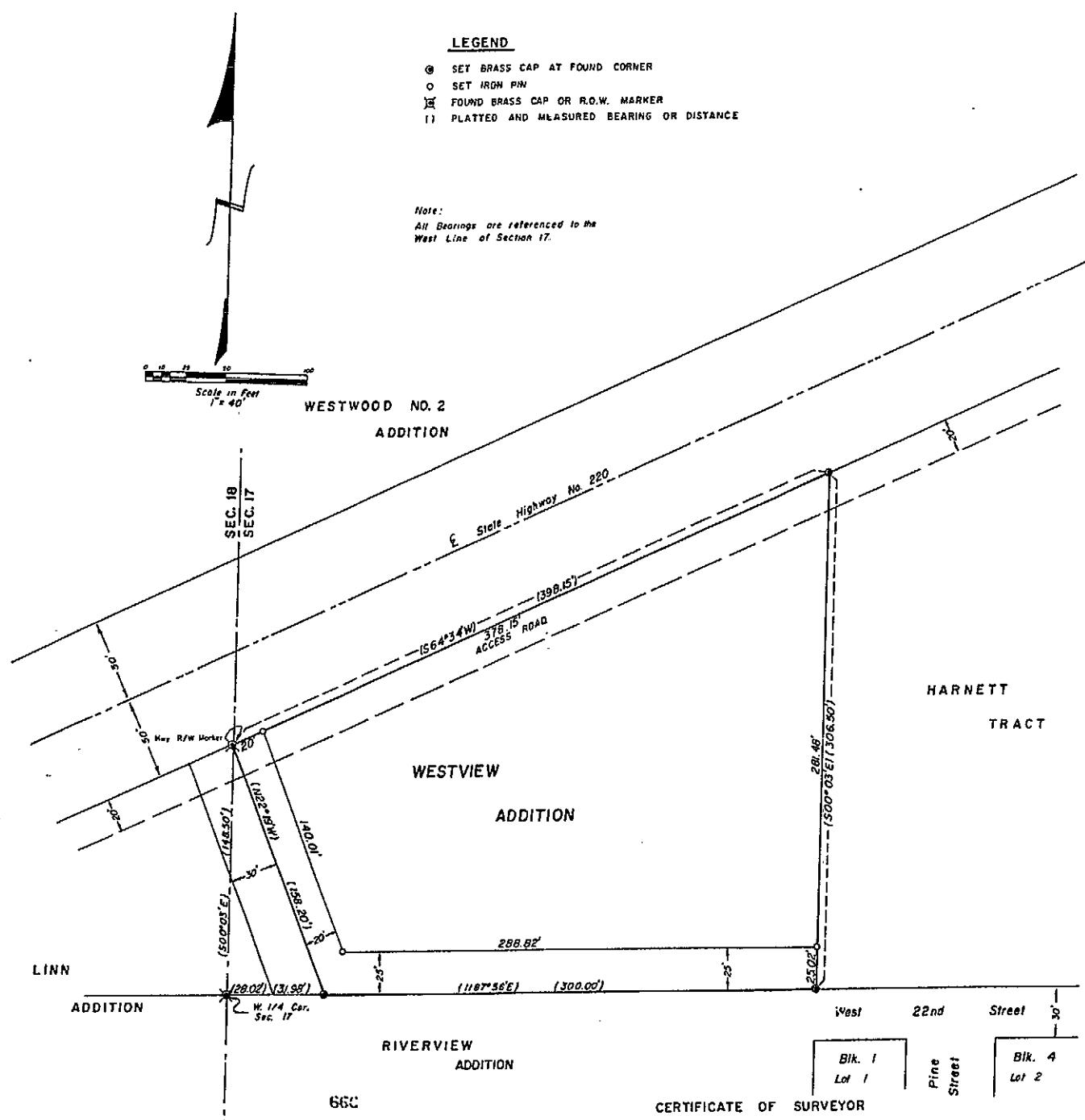
Attest: *James E. Cottrell*
CITY CLERK

PRESIDENT OF COUNCIL

Attest: *James P. Bachtel*
COUNTY CLERK

Inspected and Approved: *Adrian F. Waters*
COUNTY SURVEYOR

Inspected and Approved: *Vincent Ruzicki*
CITY ENGINEER



STATE OF WYOMING }
COUNTY OF NATRONA }

I, **Adrian F. Waters** of Casper, Wyoming do hereby certify that this amended plat was prepared from notes taken during an actual survey made by me during the month of May 1968, and that such plat correctly represents such survey and the "Amended Plat of Westview Addition to the City of Casper, Natrona County, Wyoming"; such survey as represented hereon is correct to the best of my knowledge and belief.

Wyoming Registration L.S. 325 *Adrian F. Waters*

Subscribed in my presence and sworn before me the 2nd day of June, 1968. My commission expires March 23, 1969

Notary Public *Ernest P. Dymek*



ATLAS REPRODUCTION

AMENDED PLAT OF WESTVIEW ADDITION CASPER, WYOMING

W.D. No.	File No.	Field Notes	Drawn	By	Checked	Date
594		Misc. 25 A21	June 6, 1968	AW	AW	

WESTERN ENGINEERS-ARCHITECTS, INC.
Casper Jackson Salt Lake New York