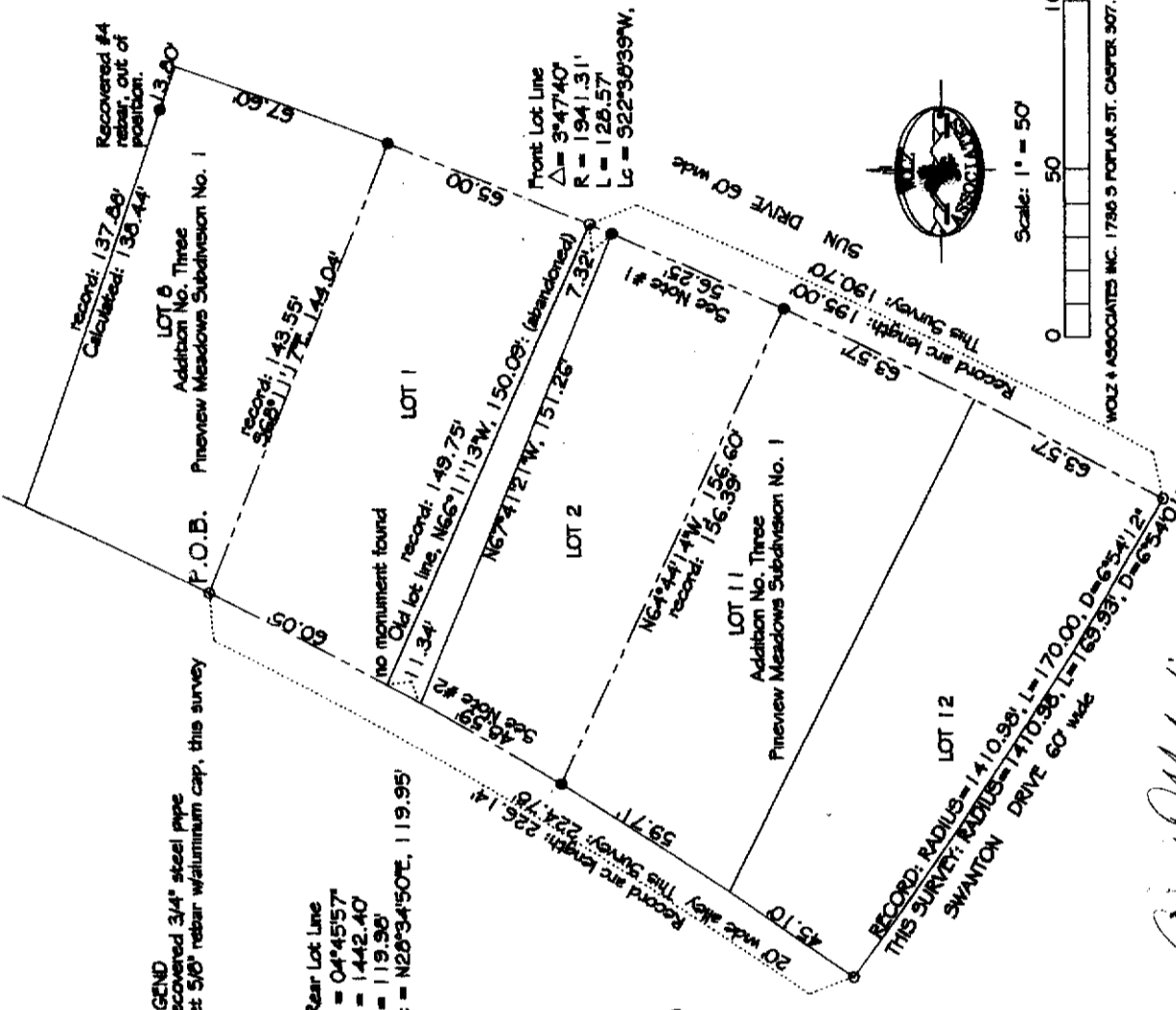
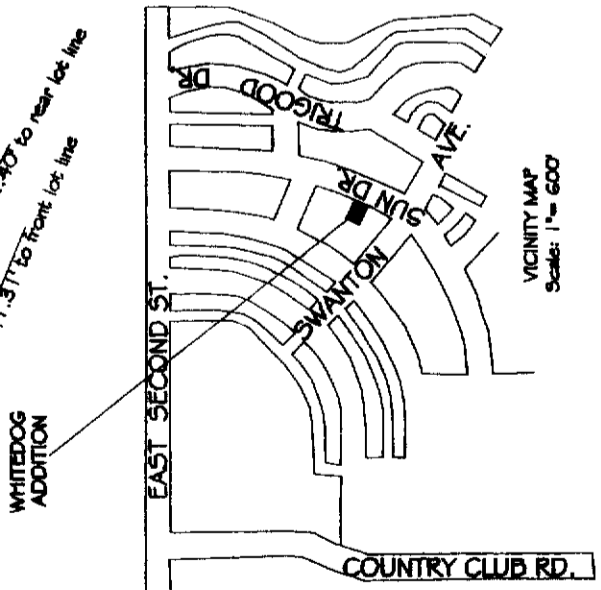


From Plat of Addition No. Three of Fineview Meadows Subdiv. No. 1
 Bearing determined to be N89°37'08"E
 134' 29"00" 742.40' 95°54'
 194' 13"11" to front lot line
 to rear lot line



NOTES:
 1. Front lot line record arc: 65.00', proportioned to 63.57' between recovered corners.
 2. Rear lot line record arc: 60.41' Proportioned to 60.05' between recovered corners for lot 1, and 60.29' proportioned to 59.93' for lot 2.

CERTIFICATE OF SURVEYOR

I, Charles K. Wolf, of Casper, hereby certify that this plat was prepared from notes taken during an actual survey made by me on June 12, 2009 and is true and accurate. That the dimensions are in feet and decimals thereof, the basis of bearings is the line between the centers of the front and rear lot line central angles, assumed to be, and supported by calculations to be EAST, as shown on the record plat, of Addition No. Three of Fineview Meadows Subdivision No. 1, City of Casper. New corners were set by me as shown on this plat, all true and correct to my knowledge and belief. Corner monuments (3/4" steel pipe) found in place were not in agreement with platized distances and lot dimensions shown, and were established from proportionate lengths between found corners. The error of closure was 1/32" (0.003125').

CHARLES K. WOLF
 P.E. & L.S. 6392
 Date: 8/11/10

APPROVALS

Inspected and approved this 31st day of August 2010

Inspected and approved this 18th day of August 2010

Inspected and approved this 18th day of August 2010

RECORDED

Filed for Record in the office of the County Clerk of Natrona County, Wyoming, this 27th day of July 2010
 Instrument No. 912292



Certificate of Dedication:
 Mitchell and Dora J. Skovgaard, hereby certify that they are the owners and proprietors of Lot 9 of Block 10; and Rex J. and Sheila R. Evans hereby certify that they are the owners of Lot 10 of Block 10, both lots being in Block 10 of Addition No. Three of Fineview Meadows Subdivision No. 1, to the City of Casper, County of Natrona, State of Wyoming, being described as follows:
 Beginning at the Northwesterly corner of said Lot 9;
 Thence S62°11'17"E, 144.04 feet along the north line of said lot 9, to the northwesterly corner of said Lot 9;
 Thence along the arc of a true, non-tangential curve to the right, a distance of 128.57 feet, a radius of 1941.31 feet, and a central angle of 3°47'40"; the long chord of which lies S22°36'39"W, 128.54 feet to a point;
 Thence N6°44'14"W, 156.60 feet along the southerly line of said Lot 10, to a point on the alley line of said Block 10;
 Thence along the arc of a true, non-tangential curve to the left, a distance of 119.95 feet, a radius of 1442.40 feet, through a central angle of 04°45'57"; the long chord of which lies N26°34'50"E, 119.95 feet to the point of beginning and containing 18,620.7 square feet more or less.

Above described property is subject to any and all rights of way, easements, reservations and encumbrances which have been legally acquired.
 The subdivision of the foregoing described land as it appears on this plat is with the free consent and desires of the above named owners and proprietors. The names of said subdivision shall be known as the WHITEDOG ADDITION to Addition No. Three of Fineview Meadows Subdivision No. 1, City of Casper, Wyoming. The subdivision shall consist of Lots 1 and 2, as shown on this plat. All streets and easements upon and adjacent to this property have been previously dedicated to the public and respective utility entities.

OWNERS:
 Block 10, Addition No. Three, FineView Meadows Subdivision No. 1
 Rex J. and Sheila R. Evans, Lot 10 Mitchell and Dora J. Skovgaard, Lot 9

Charles K. Wolf
 Charles K. Wolf
 Mitchell Skovgaard
 Dora J. Skovgaard

STATE OF WYOMING
 COUNTY OF NATRONA

The foregoing instrument was acknowledged before me by Rex J. and Sheila R. Evans, and Mitchell and Dora J. Skovgaard, this 25 day of July, 2010.

Notary Public *Sherry Casper*
 Natrona County, State of Wyoming
 July 8, 2011

PLAT OF MINOR BOUNDARY ADJUSTMENT AND VACATION
 OF LOTS 9 AND 10 OF BLOCK 10
 ADDITION NO. THREE
 FINEVIEW MEADOWS SUBDIVISION NO. 1
 TO THE WHITEDOG ADDITION, LOTS 1 AND 2
 IN THE CITY OF CASPER, WYOMING
 BEING IN THE SW1/4NE1/4 SECTION 11
 T33N, R79W, 6th P.M.
 NATRONA COUNTY, WYOMING

NATRONA COUNTY CLERK, WY
 Renea Vitto
 Jul 27, 2011 03:37 PM
 Pages: 1
 Fee: \$50.00
 CITY OF CASPER



912292

My term of office expires
 January 5, 2016