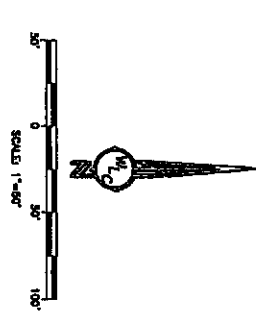
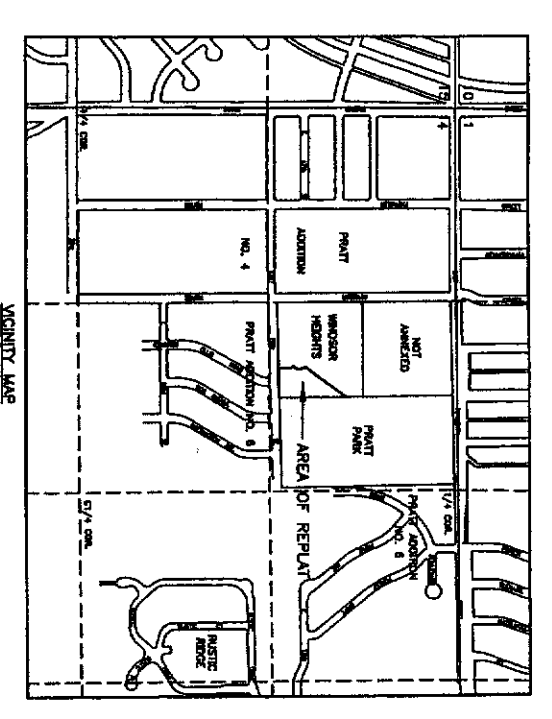
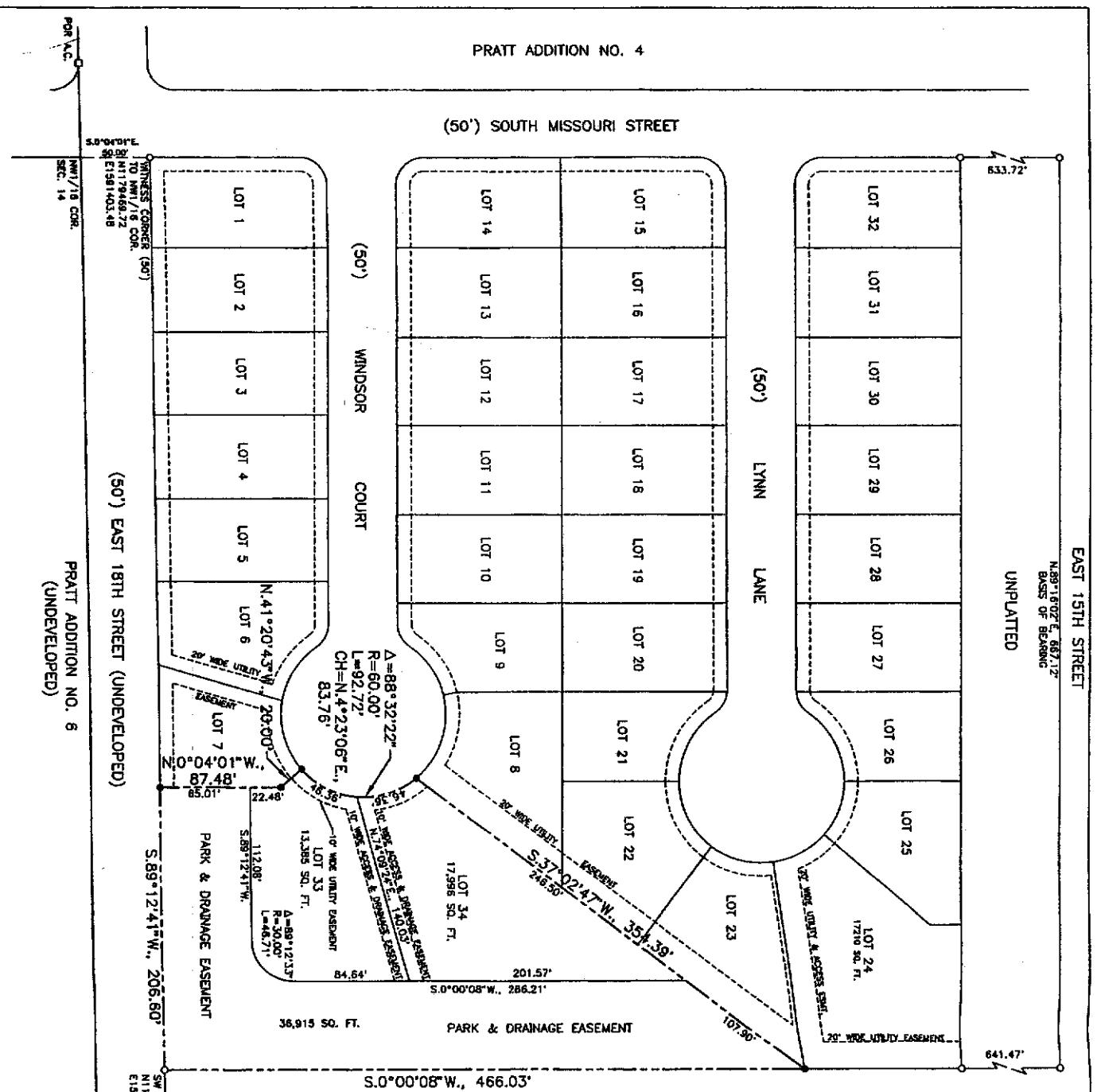




Map prepared by: WASHINGTON, LEMHART and CASPENTER, INC. 200 Pennsylvania Casper, Wyoming 82601 (307) 246-2264 W.S. No. 10882 Date: 02/08/2007

LEGEND: □ REC. ALUMINUM CAP, ○ RECONGRED BRASS CAP, • SET BRASS CAP, --- BOUNDARY, - - - EASEMENTS, S.89°12'41"W, 665.65' MEASURED DISTANCE

NOTE: The details under 1:114.378 CONDUITS ARE REFERRED TO WYOMING STATE PLANS CONDUITS EAST CENTRAL ZONE, NAD83/85. U.S. SURVEY POINT UTM ZONE 18Q UTM COORDINATE EASTING = 638675.75782 CONVERSION SCALE FACTOR = 0.999715782



APPROVALS: APPROVED: Community Planning Commission of Casper, Wyoming this 24th day of January, 2007 and forwarded to the City Council of Casper, Wyoming with recommendation that said plan be approved. APPROVED: City Council of Casper, Wyoming this 24th day of January, 2007.

INSPECTED AND APPROVED on the 15th day of November, 2006. INSPECTED AND APPROVED on the 14th day of October, 2006.



Subscribed to my presence and sworn to before me by Steve M. Carde this 19th day of January, 2007. My term of office expires January 2, 2007.



ACKNOWLEDGMENTS: State of Wyoming, County of Natrona, this 13th day of September, 2007. Witness my hand and official seal, this 13th day of September, 2007.

CERTIFICATE OF DEDICATION: SHERWOOD WEST, INC., a Wyoming Corporation, hereby certifies that they are the owners and proprietors of the following described lands... AN ADDITION TO THE CITY OF CASPER, WYOMING

TRACT A & PARKS, WINDSOR HEIGHTS AN ADDITION TO THE CITY OF CASPER, WYOMING AS LOTS 33, 34 & PARK, WINDSOR HEIGHTS AN ADDITION TO THE CITY OF CASPER, WYOMING A SUBDIVISION OF A PORTION OF THE NE1/4NW1/4, SECTION 14 TOWNSHIP 33 NORTH, RANGE 79 WEST SIXTH PRINCIPAL MERIDIAN NATRONA COUNTY, WYOMING SCALE: 1"=50'