

213/449

FILED IN

PLAT OF

WISSER ADDITION

TO THE CITY OF CASPER
 A SUBDIVISION OF A PORTION OF
 THE S 1/2 SW 1/4 SW 1/4 SECTION 2
 T33N, R79W, of the 6th PRINCIPAL MERIDIAN
 NATRONA COUNTY, WYOMING

Scale = 1" = 40'

CERTIFICATE OF DEDICATION

Peori, Wisser, a single person, and Morris, Wisser and Dolores Wisser, husband and wife, hereby certify that they are the owners of the foregoing subdivision of a part of the S 1/2 SW 1/4 SW 1/4 Section 2, Township 33 North, Range 79 West of the 6th P.M., Natrona County, Wyoming, and that this plat is with the free consent and desire of the undersigned owners and proprietors of said lands, which are more particularly described as follows:

Beginning at the southwest corner of said S 1/2 SW 1/4 SW 1/4 Section 2, which corner is also the southeast corner of said subdivision, thence N 0° 06' E along the west line of said S 1/2 SW 1/4 SW 1/4 Section 2, 462.23 feet to a point therein which is also the northwest corner of said subdivision, thence S 69° 59' E, 462.23 feet along the north line of said subdivision to the southeast corner thereof, thence S 23° 10' W, 462.23 feet along the east line of said subdivision to the southwest corner thereof, and thence S 23° 10' W, 462.23 feet along the south line of said subdivision and the point of beginning, containing 7.00 acres more or less.

That the name of said subdivision shall be Wisser Addition to the City of Casper, Natrona County, Wyoming, and that the street and public ways shown on the plat are hereby dedicated to the public.

The undersigned owners and proprietors of said lands hereby waive and relinquish all rights they and each of them have to the lands included in this plat under and by virtue of the exemption laws of the State of Wyoming.

Dated at Casper, Wyoming this 27th day of January, 1965

WILLIAM G. LADD, Professional Engineer and Land Surveyor, Casper, Wyoming, hereby certify that this plat was prepared from notes taken from an observation of the boundary of December 1963, and that the same are true and correct, and accordingly represent said survey and WISSER ADDITION to the City of Casper, Natrona County, Wyoming. Said plat and survey are in compliance with Ordinance No. 1565-A, City of Casper, March 19, 1962, all dimensions are expressed in feet and decimals thereof and bearings referred to the true meridian by direct solar observation.

STATE OF WYOMING
 COUNTY OF NATRONA

CERTIFICATE OF SURVEYOR

On this 27th day of January, 1965, before me personally appeared Peori Wisser, a single person, and Morris, Wisser and Dolores Wisser, husband and wife, to me known to be the persons described in and who executed the foregoing instrument, and acknowledged that they executed the same as their free act and deed.

Given under my hand and notarial seal, the day and year in this certificate above first written.

My commission expires 3/31/70

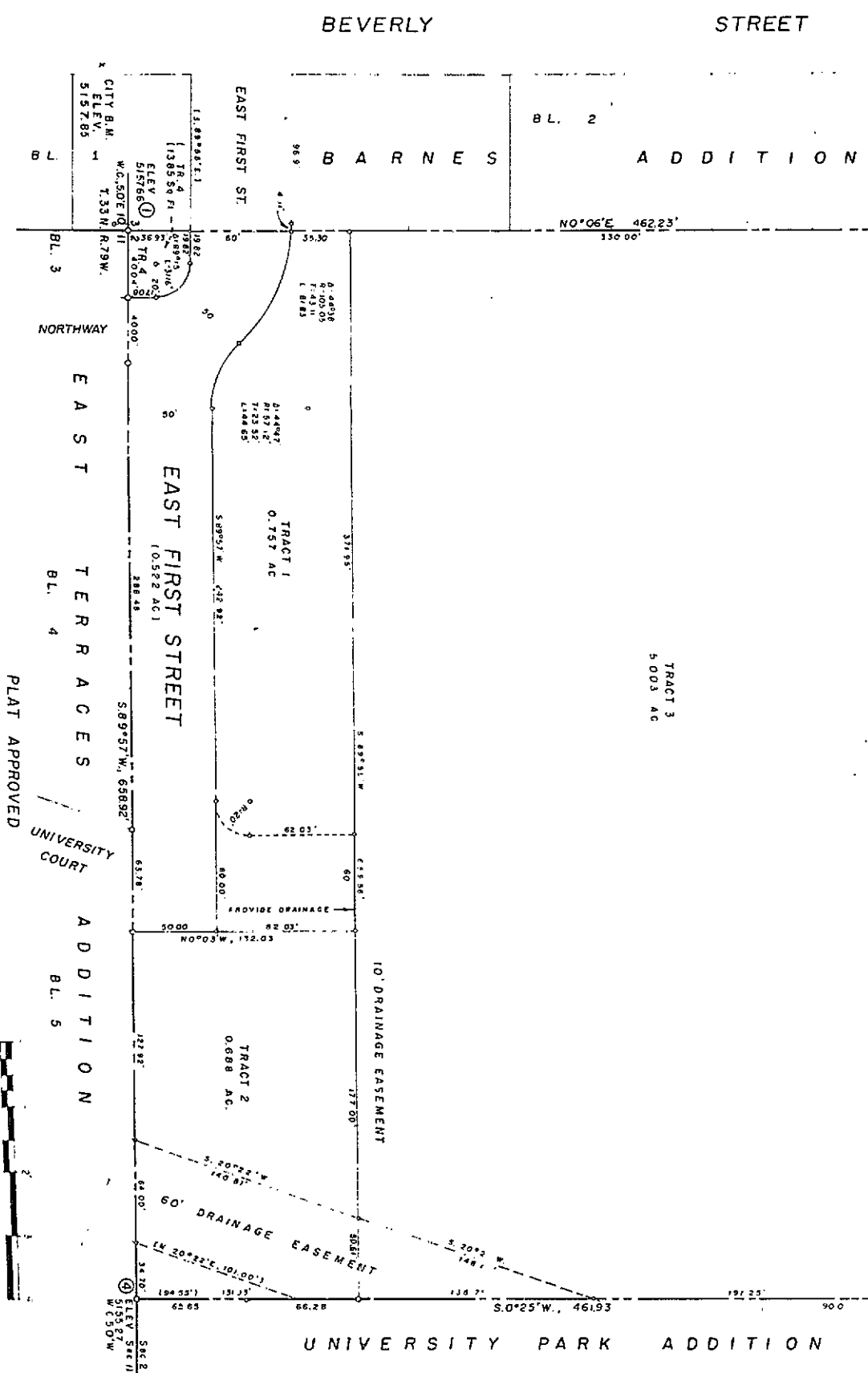
NOTARY PUBLIC

Subscribed in my presence and sworn to before me this 15th day of December 1963
 My Commission expires May 27th, 1965

William G. Ladd
 WILLIAM G. LADD, Professional Engineer and Land Surveyor

Inspected and approved on the 27th day of August, 1965
 Inspected and approved on the 15th day of August, 1965

CITY ENGINEER
 COUNTY SURVEYOR



APPROVED by the City Council of Casper, Wyoming by Resolution (Ordinance) No. 1520-A, duly passed, adopted, and approved on the 27th day of November, 1964.

APPROVED by the Board of County Commissioners of Natrona County, Wyoming by Resolution duly passed on the 27th day of December, 1963.

ATTEST: CITY CLERK

BY: WALTER G. CASPER, Mayor

ATTEST: COUNTY CLERK, SECRETARY

BY: JAMES E. ...

APPROVED by the Community Planning Commission of Casper, Wyoming this 27th day of December and forwarded to the City Council of Casper, Wyoming with recommendation that said plat be approved.

ATTEST: CITY ENGINEER

FILED FOR RECORD in the Office of the County Clerk of Natrona County, Wyoming this 27th day of August, 1965.