

237C

Packet 4
Folder 4

192/359

"W.L.W RANCH ACRES" A SUBDIVISION OF PLAT THESE 1/4, SECTION 29 T.34N., R.80W. of 6th PRINCIPAL MERIDIAN, NATRONA COUNTY, WYOMING.

CERTIFICATE OF DEDICATION

STATE OF WYOMING
COUNTY OF NATRONA

WYOMING ENTERPRISES INC., A WYOMING CORPORATION, certifies that the above and foregoing subdivision of the Southeast one-quarter (SE 1/4) of Section 29, T.34 N., R.80 W. of the 6th Principal Meridian, Natrona County, Wyoming, as it appears on this plat, is with the free consent and in accordance with the desires of the above named and undersigned owners and proprietors of said lands, the name of said Subdivision shall be "W.L.W RANCH ACRES", and the roads shown in the Plat are hereby dedicated to Public Use.

Dated at Casper, Wyoming the 7 day of _____, 1962.

ATTEST:
BY: PRESIDENT
SECRETARY

STATE OF WYOMING
COUNTY OF NATRONA

On this _____ day of _____, 1962 before me personally appeared Clarence E. Louder, known personally known, who by me being duly sworn, did say that he is the President of WYOMING ENTERPRISES INC., a Wyoming Corporation, and the seal affixed to said instrument is the corporate seal of said corporation, and that the above and foregoing certificate was signed and sealed on behalf of said corporation by authority of its Board of Directors and said Clarence E. Louder acknowledged said certificate to be the free act and deed of said corporation.

Given under my hand and notarial seal the day and year first above written.

My Commission expires _____

STATE OF WYOMING
COUNTY OF NATRONA

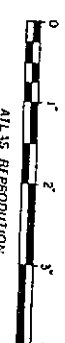
I, William G. Land of Casper, Wyoming do hereby certify that this plat was made from notes taken during an actual survey made by me during the months of February and March, 1962 and that such plat correctly represents such survey and the subdivision "W.L.W RANCH ACRES" all lots are properly marked and identified, all dimensions are expressed in feet and decimals thereof. Such survey as represented herein is correct to the best of my knowledge and belief.

Wyoming Registration No. 519, P.E. & L.S.
Subscribed in my presence and sworn to before me this 29th day of March, 1962.

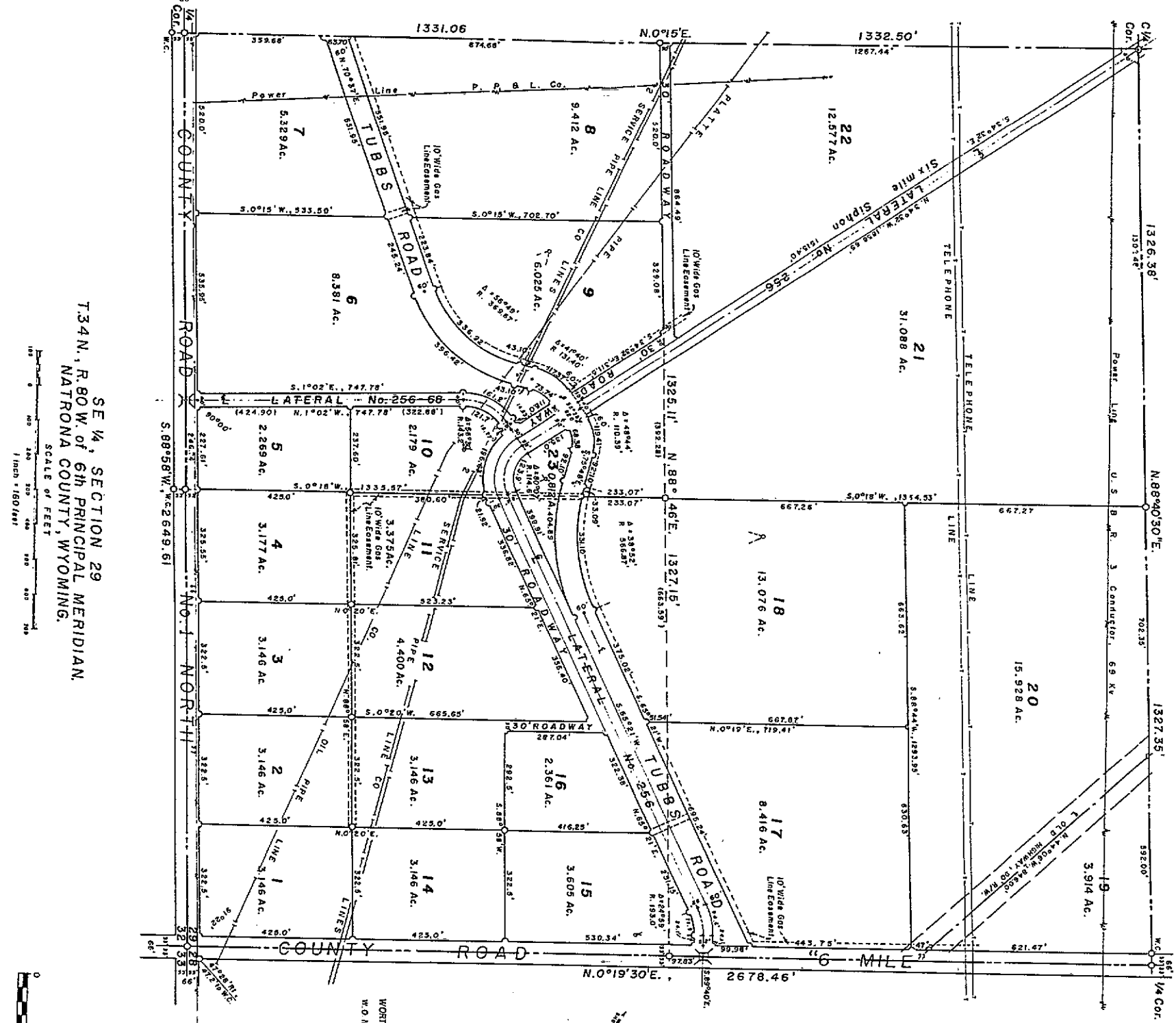
My Commission expires May 27th, 1965.

PLAT APPROVED:
BOARD OF COUNTY COMMISSIONERS
NATRONA COUNTY, WYOMING
By Resolution duly passed on the _____ day of _____, 1962.

ATTEST:
COUNTY CLERK



SE 1/4, SECTION 29
T.34N., R.80W. of 6th PRINCIPAL MERIDIAN,
NATRONA COUNTY, WYOMING.



SURVEY AND PLAT BY
WORTHINGTON LEMHART & ASSOCIATES, INC.
200 South Lowell St., Casper, Wyoming
March 29, 1962.
W.O. No. 2-3-A