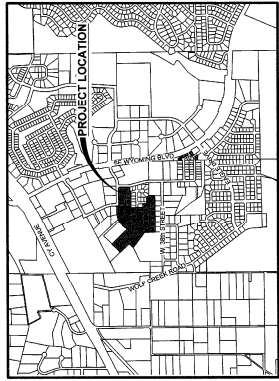


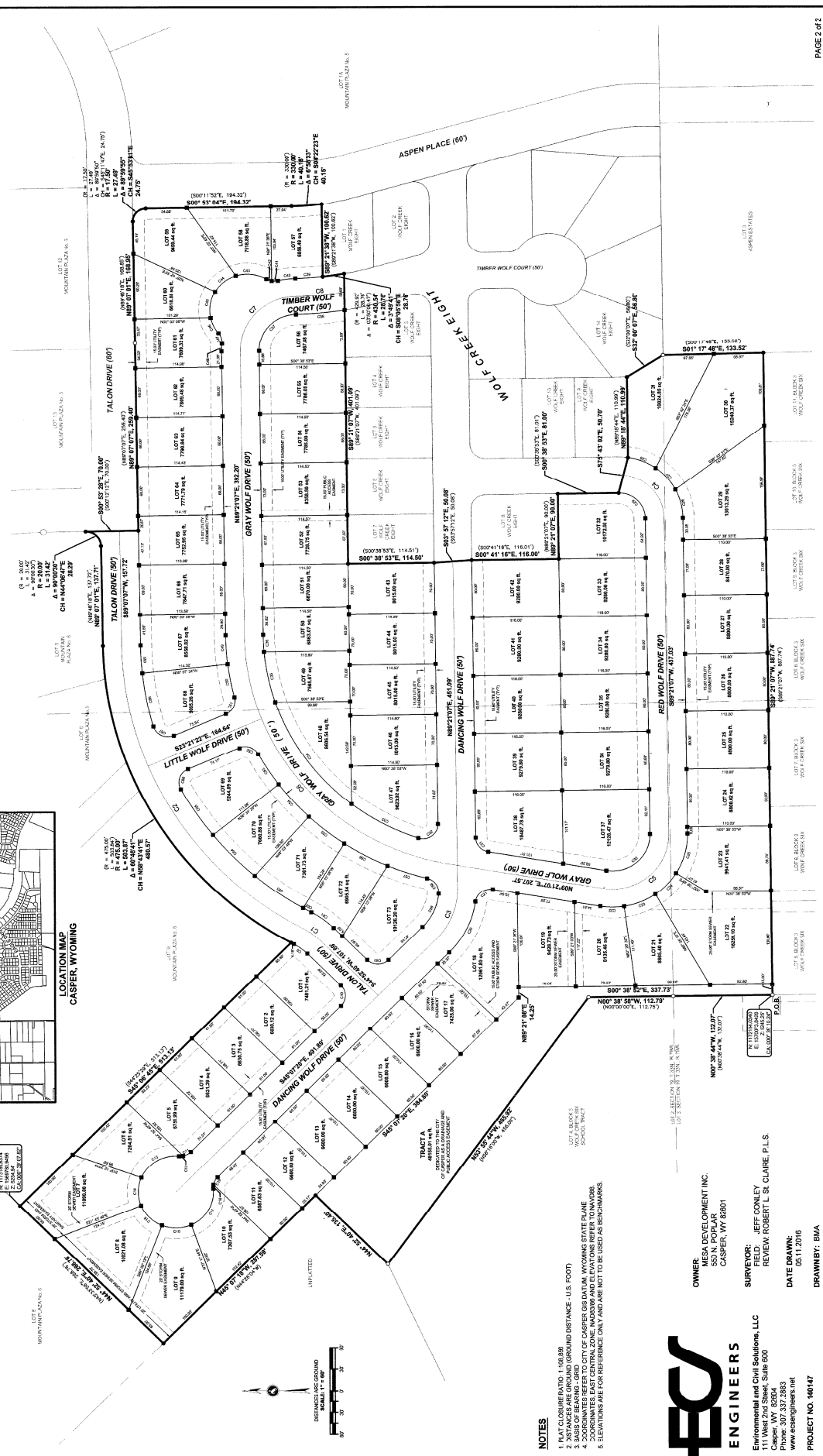
WOLF CREEK NINE ADDITION
TO THE CITY OF CASPER

ANNEXATION, VACATION, AND REPLAT OF
WOLF CREEK NINE ADDITION
TO THE CITY OF CASPER

A VACATION, AND REPLAT OF TRACT B IN WOLF CREEK EIGHT ADDITION TO THE CITY OF CASPER, WYOMING, LOT 2 IN MOUNTAIN PLAZA NO. 5 TO THE CITY OF CASPER, WYOMING, LOT 10 IN MOUNTAIN PLAZA NO. 6 TO THE CITY OF CASPER, WYOMING, AND THAT PORTION OF TALON DRIVE IN MOUNTAIN PLAZA NO. 6 TO THE CITY OF CASPER, WYOMING, AND AN ANNEXATION OF A PORTION OF LOT 2, SECTION 19, T. 33N., R. 79W., OF THE 6TH P.M. AND BEING A SUBDIVISION OF PORTIONS OF THE SOUTHWEST QUARTER OF THE NORTHWEST QUARTER (SE1/4NW1/4), THE NORTHEAST QUARTER OF THE SOUTHWEST QUARTER (NE1/4SW1/4), LOT 2, AND LOT 3 OF SECTION 19, TOWNSHIP 33 NORTH, RANGE 79 WEST OF THE SIXTH PRINCIPAL MERIDIAN, WATRONA COUNTY, WYOMING.



- LEGEND**
- RECOVERED ALUMINUM CAP
 - RECOVERED BRASS CAP
 - SET ALUMINUM CAP (PLS 584)
 - SET BRASS CAP (PLS 584)
 - SUBDIVISION BOUNDARY (PROPOSED)
 - PROPERTY LINE (ADJACENT LAND EXISTING)
 - PROPOSED CASERMENT LINE
 - 500' ± 2" P.L. 76.02' PROPOSED BEARING AND DISTANCE
 - 500' ± 7" P.L. 76.00' RECORD BEARING AND DISTANCE



- NOTES**
1. ALL LOT CORNERS ARE 1:50 SCALE.
 2. DISTANCES ARE GROUND AND GROUND DISTANCE (U.S. FOOT).
 3. BASIS OF BEARINGS - GRID.
 4. COORDINATES EAST CENTRAL ZONE, NAD83 AND ELEVATIONS REFER TO NAVD83.
 5. ELEVATIONS ARE FOR REFERENCE ONLY AND ARE NOT TO BE USED AS BENCHMARKS.

OWNERS:
MESA DEVELOPMENT INC
553 N. POPLAR
CASPER, WY 82401

SURVEYOR: JEFF CONLEY
REVIEW: ROBERT L. ST. CLAIRE, P.L.S.

DATE DRAWN: 05.11.2018

DRAWN BY: BMA

PROJECT NO. 140147



ES ENGINEERS
Environmental and Civil Solutions, LLC
111 West 2nd Street, Suite 600
Casper, WY 82404
Phone: 307.233.8888
www.es-engineers.com