

WOLF CREEK SIX

AN ADDITION TO THE CITY OF CASPER, NATRONA COUNTY, WYOMING BEING A PART OF THE SW/4 OF THE NW/4, THE NW/4 OF THE SW/4 AND THE NE/4 OF THE SW/4, SECTION 19, T. 33 N. R. 79 W., 6TH P.M., AND PART OF LOT 64, SWINGLE RANCH TRACTS EXTENSION, NATRONA COUNTY, WYOMING

CERTIFICATE OF DEDICATION AND ANNEXATION

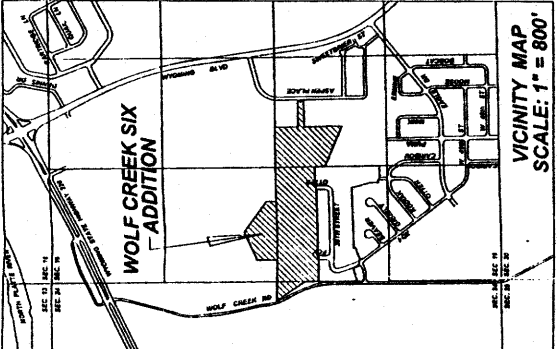
STATE OF WYOMING)
 COUNTY OF NATRONA) SS
 I, DANIEL A. SECK, REGISTERED LAND SURVEYOR IN THE STATE OF WYOMING, DO HEREBY CERTIFY THAT THIS PLAT WAS MADE BY ME IN THE MONTH OF AUGUST, 2005 AND THAT THE PLAT IS AN ACCURATE REPRESENTATION THEREOF.

THE FOREGOING INSTRUMENT WAS ACKNOWLEDGED BEFORE ME BY DANIEL A. SECK THIS 28th DAY OF February, 2006
 WITNESS MY HAND AND OFFICIAL SEAL.
 MY COMMISSION EXPIRES 9/14/09

THE FOREGOING INSTRUMENT WAS ACKNOWLEDGED BEFORE ME BY MATHEW M. HERRICK THIS 20th DAY OF March, 2006.
 WITNESS MY HAND AND OFFICIAL SEAL.
 MY COMMISSION EXPIRES 08/01/07

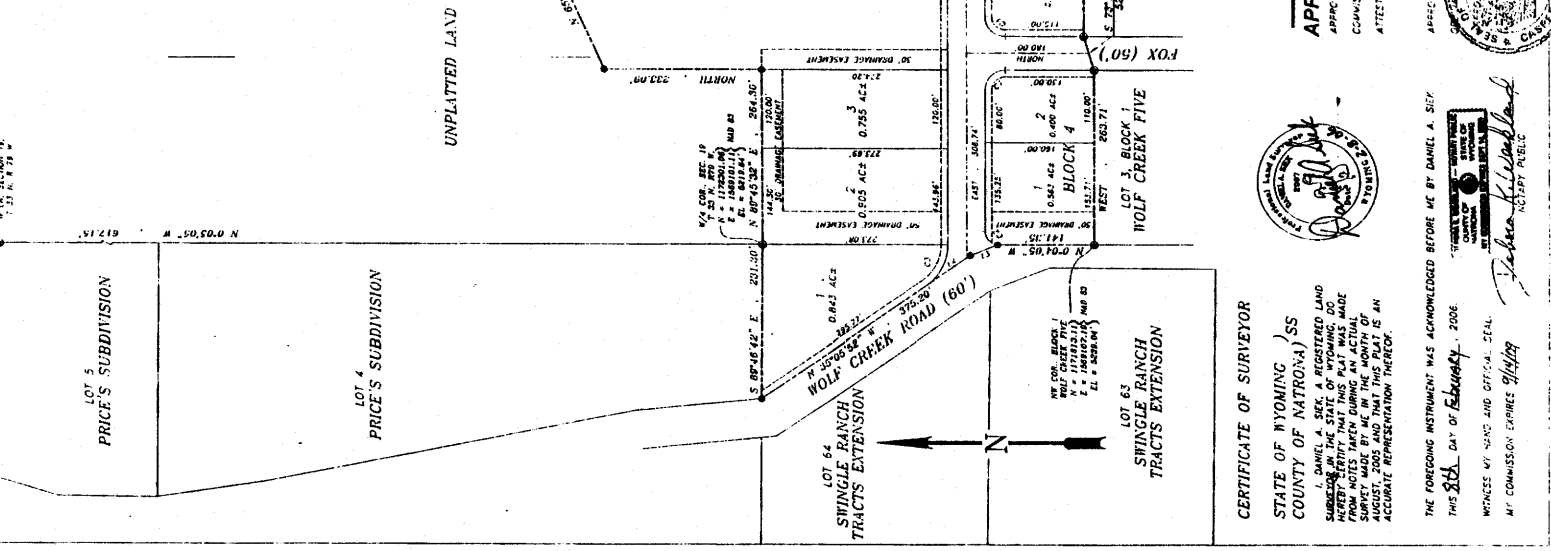
THE FOREGOING INSTRUMENT WAS ACKNOWLEDGED BEFORE ME BY KEITH TILLY THIS 20th DAY OF March, 2006.
 WITNESS MY HAND AND OFFICIAL SEAL.
 MY COMMISSION EXPIRES 01/31/07

THE FOREGOING INSTRUMENT WAS ACKNOWLEDGED BEFORE ME BY MATHEW M. HERRICK THIS 20th DAY OF March, 2006.
 WITNESS MY HAND AND OFFICIAL SEAL.
 MY COMMISSION EXPIRES 08/01/07



- NOTES:
1. BASIS OF BEARING IS AN ASSUMED BEARING OF N 89°45'32" E ON THE NORTH LINE OF THE NW/4 OF THE SW/4 OF SECTION 19, T. 33 N. R. 79 W. 6TH P.M.
 2. ALL BEARINGS AND DISTANCES ARE MEASURED UNLESS OTHERWISE NOTED.
 3. SUBDIVISION IS TO BE ZONED R-1.
 4. PLAT CLOSURE EXCEEDS 1 IN 100,000.
 5. FLOODING: ALL PORTIONS OF THIS SUBDIVISION ARE REMOTE FROM RIVERS AND FLOOD PLAINS. NO FLOODING DANGER EXISTS.
 6. CONVERSIONS: USABLE TO STATE PLANE COORDINATES - LT. 0.58 48.8. SCALE FACTOR = 0.99974723.

- LEGEND:
- = SET BRASS CAP MONUMENT
 - C = FOUND REBAR & CAP
 - = FOUND BRASS CAP MONUMENT
 - = SUBDIVISION BOUNDARY
 - = CENTERLINE OF STREET
 - = UTILITY CASHEMENT
 - = LINE OF LOS
 - = AS NOTED AT OTHER LOCATIONS



APPROVALS

APPROVED BY THE CITY OF CASPER PLANNING AND ZONING COMMISSION THIS 20th DAY OF November, 2005
 ATTEST: *[Signature]* CHAIRMAN

APPROVED BY THE CITY COUNCIL OF CASPER, WYOMING BY RESOLUTION 9-06 DULY PASSED, ADOPTED AND ENFORCED BY THE CITY CLERK THIS 20th DAY OF February, 2006
 ATTEST: *[Signature]* CITY CLERK

CERTIFICATE OF SURVEYOR

STATE OF WYOMING)
 COUNTY OF NATRONA) SS
 I, DANIEL A. SECK, A REGISTERED LAND SURVEYOR IN THE STATE OF WYOMING, DO HEREBY CERTIFY THAT THIS PLAT WAS MADE BY ME IN THE MONTH OF AUGUST, 2005 AND THAT THE PLAT IS AN ACCURATE REPRESENTATION THEREOF.

THE FOREGOING INSTRUMENT WAS ACKNOWLEDGED BEFORE ME BY DANIEL A. SECK THIS 28th DAY OF February, 2006
 WITNESS MY HAND AND OFFICIAL SEAL.
 MY COMMISSION EXPIRES 9/14/09

TABLE

LINE NO.	BEARING	DISTANCE	CURVE DATA	RADIUS	LENGTH	TANGENT
C1	S 07°04'40" E	30.00		47.12	30.00	
C2	S 19°04'05" E	26.00		31.44	20.02	
C3	S 54°24'08" E	75.25		72.11	39.09	

WOLF CREEK SIX

LINE NO.	BEARING	DISTANCE
L1	S 07°04'40" E	5.18
L2	S 07°04'40" E	9.87
L3	S 19°04'05" E	4.57
L4	S 54°24'08" E	79.47

788674

RECORDED

FILED FOR RECORD IN THE OFFICE OF THE COUNTY CLERK OF NATRONA COUNTY, WYOMING THIS 28th DAY OF April, 2006.

INSTRUMENT NO. 788674

My term of office expires January 2, 2007

788674

PREPARED BY SECK SURVEYING SERVICE, CASPER, WYOMING. (307)266-6688. JOB NO. 70-05