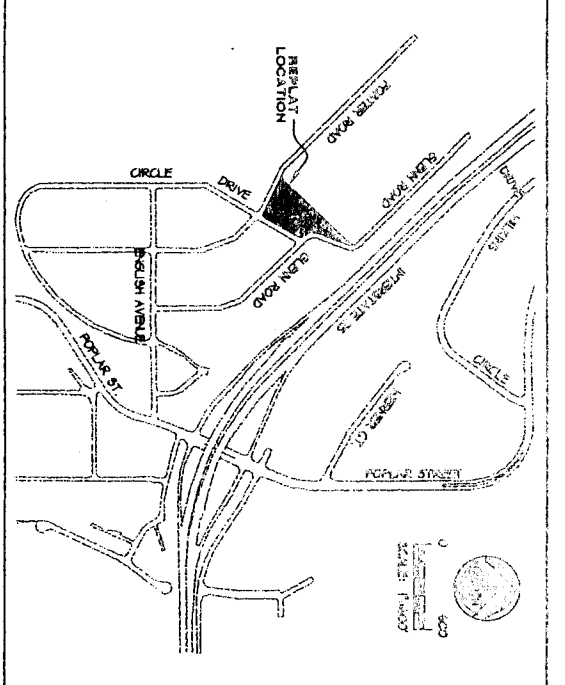


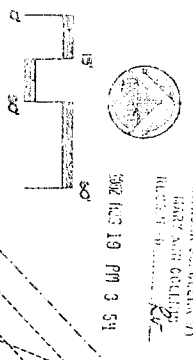
Map of Lot 1, Block 15 of Industrial Park Subdivision
Filed August 19, 2002
Instrument # 58848

CERTIFICATE OF DEDICATION

STATE OF WYOMING }
COUNTY OF NATRONA }
THE UNDERSIGNED, RICOR CONSTRUCTION, INC., DOES CERTIFY THAT THEY ARE THE OWNER AND PROPRIETOR OF THE FOLLOWING DESCRIBED PARCELS OF LAND, A PORTION OF LAND SITUATE IN THE SECTION 5, T.33N., R.79W., 6TH P.M., NATRONA COUNTY, WYOMING, ALSO KNOWN AS LOT 1, BLOCK 15 OF INDUSTRIAL PARK SUBDIVISION TO THE CITY OF CASPER, WYOMING, AND BEING MORE PARTICULARLY DESCRIBED AS FOLLOWS:
COMMENCING AT THE SOUTHWESTERLY CORNER OF THE PARCEL, ALSO BEING THE SOUTHWEST CORNER OF BLOCK 15 OF THE WYOMING INDUSTRIAL PARK SUBDIVISION AND BEING THE POINT OF BEGINNING AND MONUMENTED BY A BRASS CAP:
THENCE N43°37'59" W, ALONG THE NORTHEASTERLY RIGHT-OF-WAY LINE OF FOSTER ROAD, A DISTANCE OF 3.38 FEET TO A POINT OF CURVATURE, MONUMENTED BY A BRASS CAP;
THENCE ALONG A CURVE TO THE LEFT HAVING A RADIUS OF 105.00 FEET, THROUGH AN DELTA ANGLE OF 20°41'43", A DISTANCE OF 37.93 FEET, WITH A CHORD BEARING OF N4°36'13" W, AND A CHORD DISTANCE OF 57.72 FEET TO THE POINT OF TANGENCY, MONUMENTED BY A BRASS CAP;
THENCE N65°00'06" W, ALONG THE NORTHEASTERLY RIGHT-OF-WAY LINE OF FOSTER ROAD, A DISTANCE OF 261.87 FEET TO THE NORTHWESTERLY CORNER OF THE PARCEL, MONUMENTED BY A BRASS CAP;
THENCE N46°37'01" E, ALONG THE NORTHERLY LINE OF THE PARCEL, A DISTANCE OF 657.82 FEET TO THE NORTHEAST CORNER OF THE PARCEL, LOCATED ON THE NORTHWESTERLY RIGHT-OF-WAY LINE OF GLENN ROAD, MONUMENTED BY A BRASS CAP;
THENCE ALONG A NON-TANGENTIAL CURVE TO THE RIGHT HAVING A RADIUS OF 51.39 FEET, THROUGH A DELTA ANGLE OF 10°37'59", A DISTANCE OF 9.54 FEET, WITH A CHORD BEARING OF S17°51'41" W, AND A CHORD DISTANCE OF 9.52 FEET TO A POINT OF TANGENCY, MONUMENTED BY A BRASS CAP;
THENCE CONTINUING ALONG THE NORTHWESTERLY RIGHT-OF-WAY LINE OF GLENN ROAD, S22°06'22" W, A DISTANCE OF 214.60 FEET TO A POINT OF CURVATURE, MONUMENTED BY A BRASS CAP;
THENCE ALONG A CURVE TO THE LEFT HAVING A RADIUS OF 101.34 FEET, THROUGH A DELTA ANGLE OF 10°37'59", A DISTANCE OF 117.56 FEET, WITH A CHORD BEARING OF S17°51'41" W, AND A CHORD DISTANCE OF 110.74 FEET TO THE POINT OF TANGENCY, MONUMENTED BY A BRASS CAP;
THENCE S44°25'00" E, A DISTANCE OF 17.97 FEET, THROUGH A DELTA ANGLE OF 10°37'59", A DISTANCE OF 101.34 FEET, WITH A CHORD BEARING OF S17°51'41" W, AND A CHORD DISTANCE OF 110.74 FEET TO THE POINT OF TANGENCY, MONUMENTED BY A BRASS CAP;
THENCE S31°12'00" W, ALONG THE WESTERLY RIGHT-OF-WAY LINE OF CIRCLE DRIVE, A DISTANCE OF 302.87 FEET TO THE POINT OF BEGINNING.
THE ABOVE DESCRIBED TRACT OF LAND CONTAINS 2.34 ACRES, MORE OR LESS, AND IS SUBJECT TO ANY RIGHTS-OF-WAY AND/OR EASEMENTS, RESERVATIONS AND ENCUMBRANCES WHICH HAVE BEEN LEGALLY ACQUIRED.
RICOR CONSTRUCTION, INC.
641 FOSTER ROAD
CASPER, WYOMING 82601



LEGEND
▲ SET BRASS CAP
○ SET MONUMENT 5/8" REBAR
● ALUMINUM CAP
● FOUND MONUMENT AS NOTED

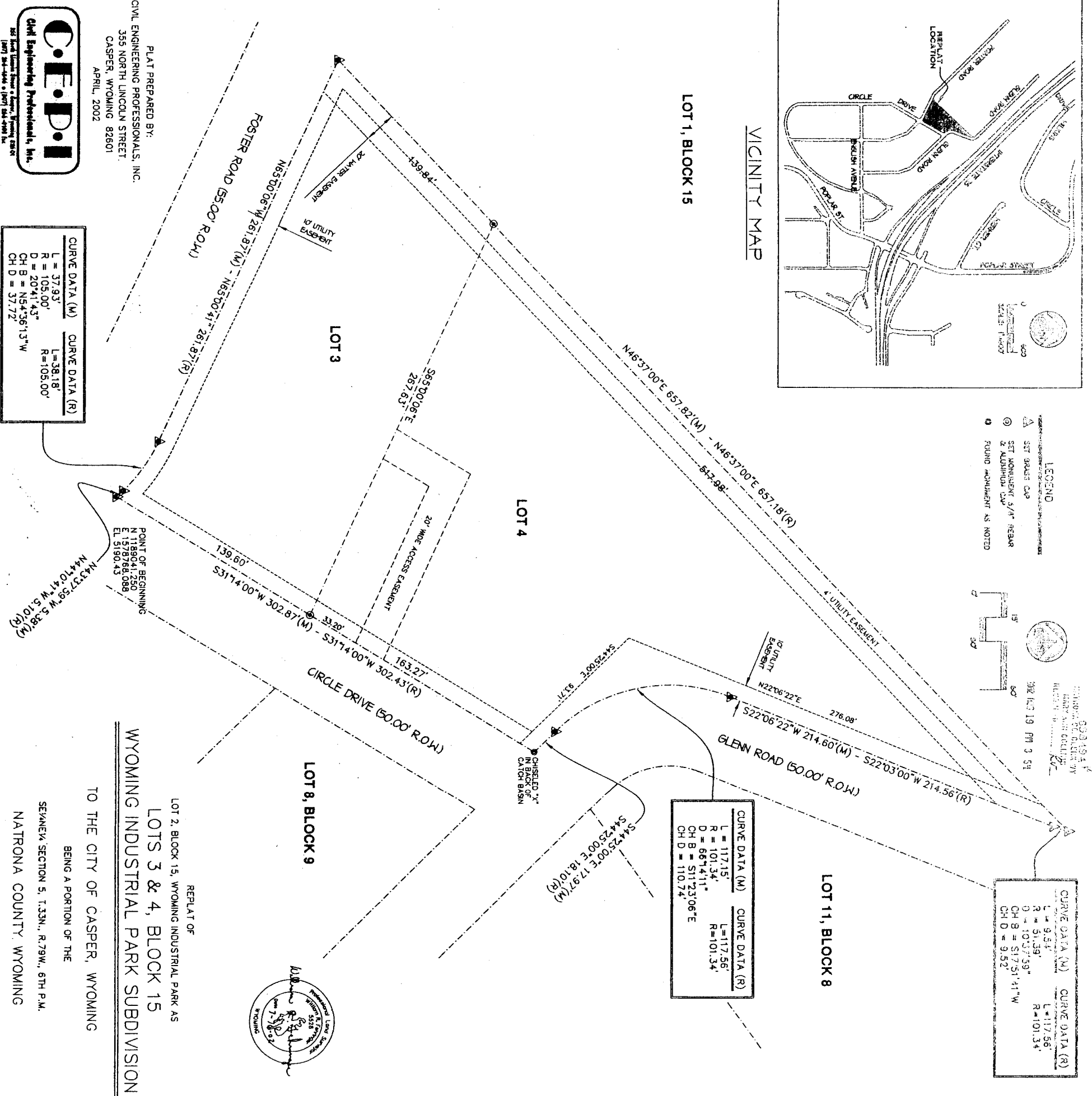


CURVE DATA (M) CURVE DATA (R)

L = 9.54'	L = 117.56'
R = 51.39'	R = 101.34'
D = 10°37'59"	D = 10°37'59"
CH B = S17°51'41" W	CH B = S17°51'41" W
CH D = 9.52'	CH D = 9.52'

CURVE DATA (M) CURVE DATA (R)

L = 117.15'	L = 117.56'
R = 101.34'	R = 101.34'
D = 66°14'11"	D = 10°37'59"
CH B = S11°23'06" E	CH B = S17°51'41" W
CH D = 110.74'	CH D = 9.52'



PLAT PREPARED BY:
CIVIL ENGINEERING PROFESSIONALS, INC.
355 NORTH LINCOLN STREET
CASPER, WYOMING 82601
APRIL, 2002

CURVE DATA (M) CURVE DATA (R)

L = 37.93'	L = 38.18'
R = 105.00'	R = 105.00'
D = 20°41'43"	D = 20°41'43"
CH B = N54°36'13" W	CH B = N54°36'13" W
CH D = 37.72'	CH D = 37.72'

REPLAT OF
LOT 2, BLOCK 15, WYOMING INDUSTRIAL PARK AS
LOTS 3 & 4, BLOCK 15
WYOMING INDUSTRIAL PARK SUBDIVISION
TO THE CITY OF CASPER, WYOMING
BEING A PORTION OF THE
SEWANEY, SECTION 5, T.33N., R.79W., 6TH P.M.
NATRONA COUNTY, WYOMING

CERTIFICATE OF SURVEYOR
STATE OF WYOMING }
COUNTY OF NATRONA }
I, WILLIAM R. FERHINGER, A REGISTERED PROFESSIONAL LAND SURVEYOR, LICENSE NO. 5528, DO HEREBY CERTIFY THAT THIS PLAT WAS MADE FROM NOTES TAKEN DURING AN ACTUAL SURVEY OF THE ABOVE DESCRIBED TRACT OF LAND, AND THAT THE DIMENSIONS AND BEARINGS THEREON ARE CORRECTLY REPRESENTED AND SHOWN. ALL DIMENSIONS ARE EXPRESSED IN FEET AND DECIMALS THEREOF, AND COURSES REFERRED TO THE TRUE MERIDIAN. ALL BEING TRUE AND CORRECT TO THE BEST OF MY KNOWLEDGE.
THE FOREGOING INSTRUMENT WAS ACKNOWLEDGED BEFORE ME BY WILLIAM R. FERHINGER THIS 16th DAY OF AUGUST, 2002.
WITNESS MY HAND AND OFFICIAL SEAL
MY COMMISSION EXPIRES 02/28/04
NOTARY PUBLIC
STATE OF WYOMING

APPROVALS
APPROVED BY THE CITY OF CASPER PLANNING AND ZONING COMMISSION OF CASPER, WYOMING
THIS 25th DAY OF August, 2002.
ATTEST: *Michelle Hays* SECRETARY
APPROVED BY THE CITY COUNCIL OF CASPER, WYOMING, BY RESOLUTION NO. 02-119, DULY PASSED,
ADOPTED AND APPROVED THIS 19th DAY OF August, 2002.
ATTEST: *Michelle Hays* CITY CLERK
INSPECTED AND APPROVED THIS 19th DAY OF August, 2002.
INSPECTED AND APPROVED THIS 25th DAY OF August, 2002.
COUNTY SURVEYOR

RECORDED
FILED FOR RECORD IN THE OFFICE OF THE COUNTY CLERK OF NATRONA COUNTY, WYOMING THIS 19th DAY OF August, 2002.
INSTRUMENT NO. 58848
COUNTY CLERK
NOTARY PUBLIC
STATE OF WYOMING

NOTES
1. ERROR OF CLOSURE EXCEEDS 1:180,246.
2. BASIS OF BEARINGS IS THE WESTERLY LINE OF SAID LOT 2, BLOCK 15 AS N46°37'01" E.
3. THE CONVERGENCE ANGLE AT THE SOUTHWEST CORNER OF SUBDIVISION IS 00°40'33.4336", AND THE CONVERSION SCALE FACTOR IS 0.989770252.

