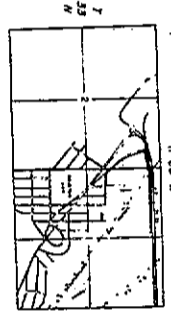
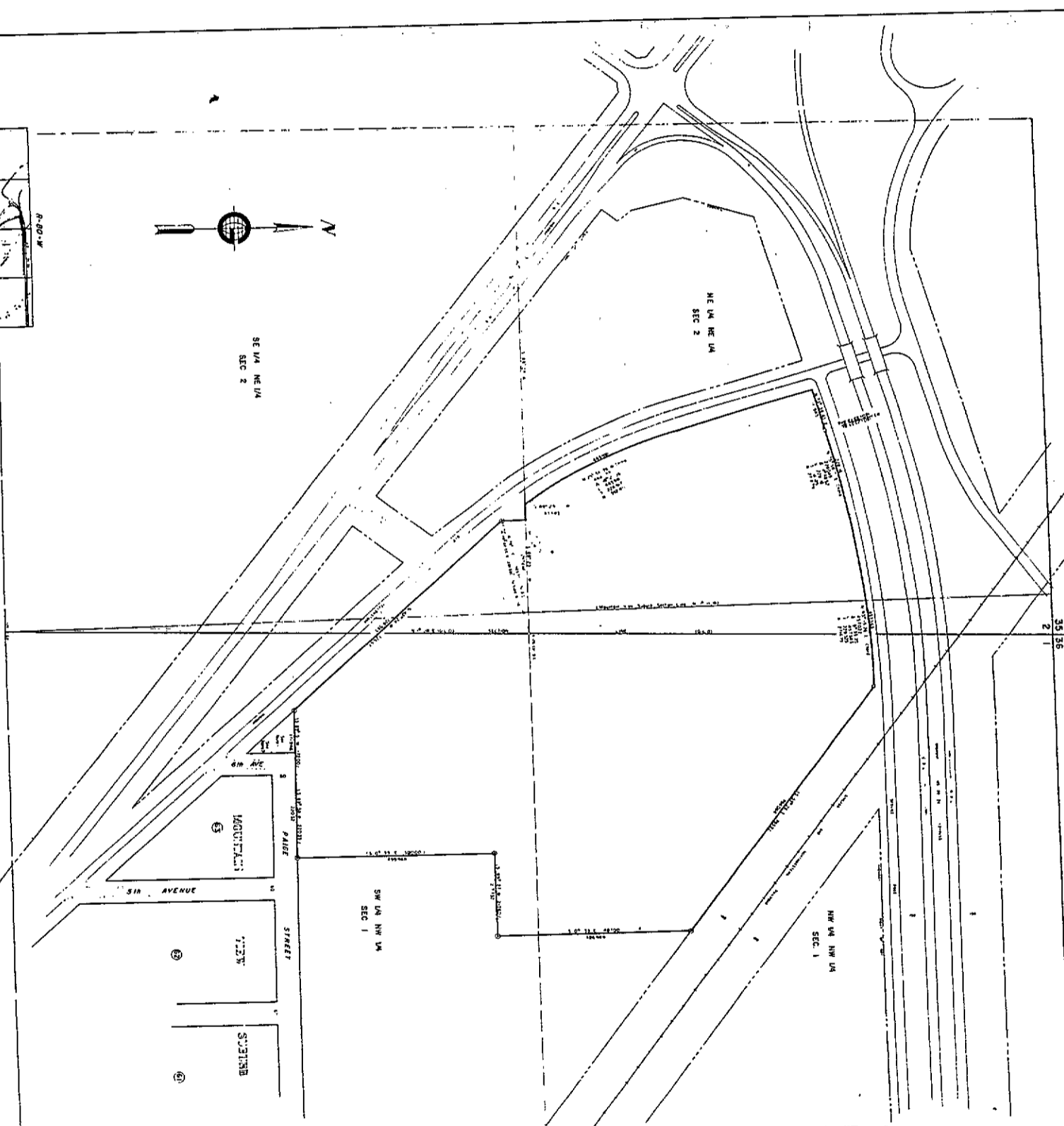


252/488

PLAT 1000
INDEXED



4971 This plat is a true and correct copy of the original survey as shown on the original survey map and is subject to the provisions of the Wyoming Statutes relating to the same.

4972 This plat is a true and correct copy of the original survey as shown on the original survey map and is subject to the provisions of the Wyoming Statutes relating to the same.

4973 This plat is a true and correct copy of the original survey as shown on the original survey map and is subject to the provisions of the Wyoming Statutes relating to the same.

LEGEND

1. Shows the location of the survey as shown on the original survey map.

2. Shows the location of the survey as shown on the original survey map.

3. Shows the location of the survey as shown on the original survey map.

4. Shows the location of the survey as shown on the original survey map.

5. Shows the location of the survey as shown on the original survey map.

GLOBAL ENGINEERING & LAND SURVEYING, INC.
1000 N. GARDEN ST.
CASP, WYOMING 82413

PLAT OF
WYOMING MACHINERY COMPANY INC.
INDUSTRIAL TRACT

A TRACT IN PORTIONS OF
NW 1/4 NW 1/4, SW 1/4 NW 1/4, SECTION 1
NE 1/4 NE 1/4, SE 1/4 NE 1/4, SECTION 2
T-33-N, R-80-W of the 6th P.M.
NATRONA COUNTY, WYOMING
SCALE 1"=400'

4974 This plat is a true and correct copy of the original survey as shown on the original survey map and is subject to the provisions of the Wyoming Statutes relating to the same.

4975 This plat is a true and correct copy of the original survey as shown on the original survey map and is subject to the provisions of the Wyoming Statutes relating to the same.

4976 This plat is a true and correct copy of the original survey as shown on the original survey map and is subject to the provisions of the Wyoming Statutes relating to the same.

4977 This plat is a true and correct copy of the original survey as shown on the original survey map and is subject to the provisions of the Wyoming Statutes relating to the same.

4978 This plat is a true and correct copy of the original survey as shown on the original survey map and is subject to the provisions of the Wyoming Statutes relating to the same.

4979 This plat is a true and correct copy of the original survey as shown on the original survey map and is subject to the provisions of the Wyoming Statutes relating to the same.

4980 This plat is a true and correct copy of the original survey as shown on the original survey map and is subject to the provisions of the Wyoming Statutes relating to the same.