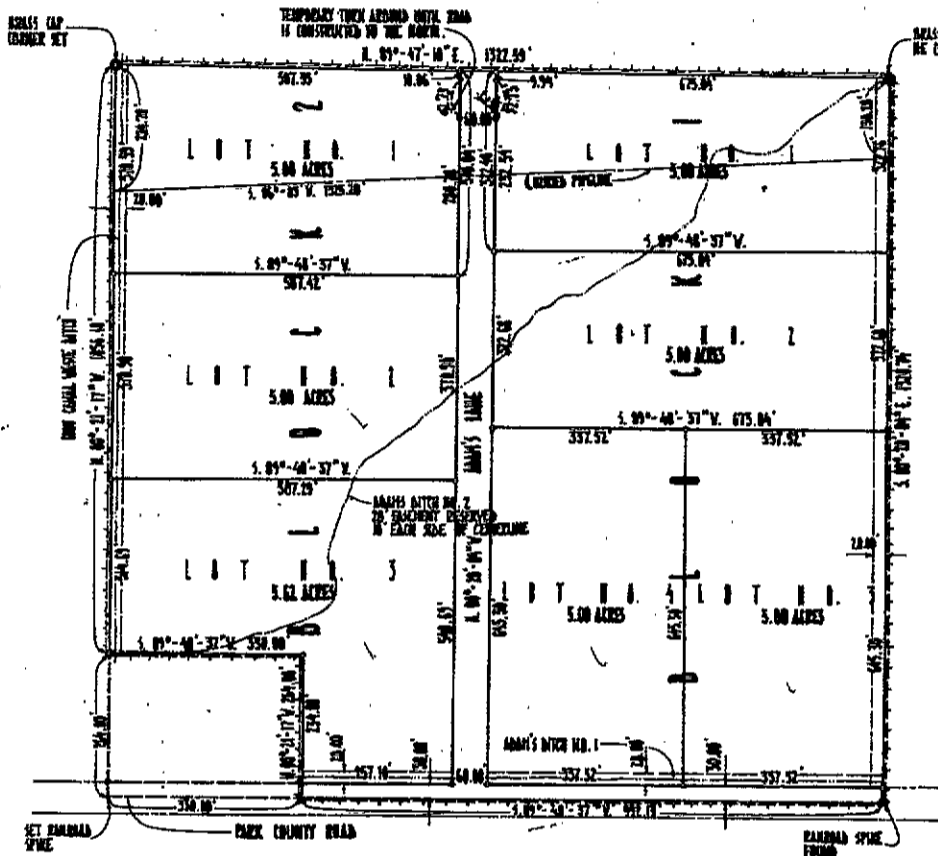
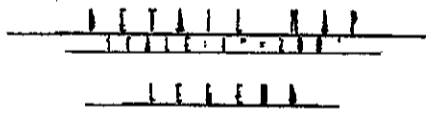


T. 53 N., R. 101 W.



MASS CAP - FORMED BY CONC. SET BY ORIGINAL GOVERNMENT SURVEY

NO PROPOSED DOMESTIC WATER SOURCE



- LEGEND**
- MASS CAP INSTRUMENT FROM GOVERN THIS
 - RAILROAD SPINE IN PREVIOUS FORM SHOWS THIS
 - MASS CAP INSTRUMENT SET SHOWS THIS
 - BOUNDARY = NO CALIBRATED IRON PIPE SET SHOWS THIS
 - BOUNDARY OF SUBDIVISION SHOWS THIS
 - NET AREA OF EACH LOT SHOWS THIS
 - REGISTRATION AND DEEDY EASEMENTS SHOWS THIS

APPROVALS

APPROVED THIS 6 DAY OF Feb 1977 BY THE COMMISSIONERS OF PARK COUNTY WYOMING, SUBJECT TO THE PROVISIONS OF SECTION 5 OF THE PARK COUNTY POLITY BY THE APPROVAL OF SUBDIVISION AND TRACTS PLATS AS ADOPTED AUGUST 7, 1962.

James E. Shelton
CHAIRMAN OF COMMISSIONERS

ATTEST: *Carol Larson*
COUNTY CLERK

CERTIFICATE OF VALIDATION

STATE OF WYOMING } ss.
COUNTY OF PARK }

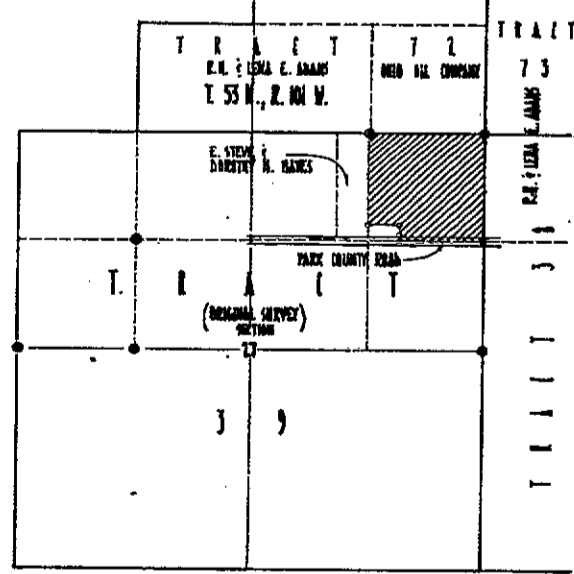
WE, R. H. ADAMS AND LENA E. ADAMS, HUSBAND AND WIFE, DO HEREBY CERTIFY THAT WE ARE THE OWNERS AND PROPRIETORS OF THE REALTY, EXCEPT 2 ACRES IN THE SW CORNER OF SECTION 27 T. 53 N., R. 101 W. OF THE 6th P.M. PARK COUNTY WYOMING BELONGING TO THE ORIGINAL GOVERNMENT SURVEY; SAID SECTION 27 BEING IDENTICAL WITH TRACT 73 ACCORDING TO THE RESURVEY; SAID 2 ACRES IN THE SW CORNER BEING PARTICULARLY DESCRIBED AS FOLLOWS:

COMMENCING AT THE SOUTHWEST CORNER OF SAID SECTION; THENCE EASTWARD ALONG THE SOUTH LINE OF SAID SUBDIVISION 350 FEET; THENCE NORTHERLY ON A LINE PARALLEL WITH THE WEST LINE OF SAID SUBDIVISION 154 FEET; THENCE WESTERLY ON A LINE PARALLEL WITH THE SOUTH LINE OF SAID SUBDIVISION 350 FEET; THENCE SOUTHERLY ALONG THE WEST LINE OF SAID SUBDIVISION 154 FEET TO THE POINT OF BEGINNING.

THAT WE HAVE CAUSED SAID BELONGING LAND TO BE SURVEYED AND PLATTED AS SHOWN HEREON; THAT THE ABOVE RE FOREGOING SUBDIVISION AS APPEARS ON THIS PLAT IS WITH THE EXACT CORNER AND IN ACCORDANCE WITH THE DESIRES OF THE UNDERSIGNED PARTIES AND PROPRIETORS AND SHALL BE KNOWN AS THE ADAM'S NO. 1 SUBDIVISION, AND THAT WE HEREBY SET APART THE TRACT AS SHOWN HEREON TO THE USE OF THE GENERAL PUBLIC FOREVER.

WE HEREBY RELEASE AND VEST IN ALL RIGHTS OF HOMESTEAD. IN WITNESS WHEREOF WE HAVE HEREONTO SET OUR HANDS THIS 20TH DAY OF December, 1975.

R. H. Adams *Lena E. Adams*
R. H. ADAMS LENA E. ADAMS



STATE OF WYOMING } ss.
COUNTY OF PARK }

THE FOREGOING INSTRUMENT WAS ACKNOWLEDGED BEFORE ME BY R. H. ADAMS AND LENA E. ADAMS THIS 20TH DAY OF Dec., 1975.

Donald J. Livingston
NOTARY PUBLIC

BY INSTRUMENT EXPIRES: MARCH 7, 1977



CERTIFICATE OF SURVEYOR

STATE OF WYOMING } ss.
COUNTY OF PARK }

I, WESLEY W. REED, OF CONY, WYOMING, HEREBY CERTIFY THAT BETWEEN OCTOBER 23, 1975 AND DECEMBER 10, 1975, THE ADAM'S NO. 1 SUBDIVISION WAS SURVEYED UNDER MY DIRECTION AND IS CORRECTLY DESCRIBED IN THE CERTIFICATE OF VALIDATION; THAT THE SAME IS CORRECTLY SHOWN ON THIS PLAT WHICH IS DRAWN TO THE SCALE INDICATED. DIMENSIONS ARE GIVEN IN FEET AND DECIMALS AND ANY SURPLUS OR DEFICIENCY EXISTING IS DISTRIBUTED PROPORTIONATELY TO THE PLAT DIMENSIONS.

WYOMING REGISTRATION NO. 557 L.S.

Wesley W. Reed
WESLEY W. REED

748754

MAP SHOWING
ADAM'S NO. 1 SUBDIVISION
LINED IN
NE 1/4, NE 1/4 SECTION 27 T. 53 N., R. 101 W.
ENGINEERING ASSOCIATES - CONY, WYOMING
CONSULTING ENGINEERS & SURVEYORS
MAY 1975