

T. 55 N., R. 99 W.
PARK COUNTY, WYOMING

CERTIFICATE OF DEDICATION

STATE OF WYOMING } 55
COUNTY OF PARK

WE, THE UNDERSIGNED, DO HEREBY CERTIFY AS FOLLOWS: WE ARE THE OWNERS AND PROPRIETORS OF LOTS 24 & 25 OF THE KATTENHORN SUBDIVISION NO. 2 WITHIN LOT 74-C OF LOT 74, T. 55 N., R. 99 W. OF THE 6TH P.M., CITY OF POWELL, PARK COUNTY, WYOMING, ACCORDING TO THE GOVERNMENT RESURVEY.

WE HAVE CAUSED SAID LAND TO BE FURTHER SUBDIVIDED, SURVEYED AND PLATTED AS SHOWN HEREON. THE SUBDIVISION OF SAID LAND, AS APPEARS ON THIS PLAT, IS WITH THE FREE CONSENT AND IN ACCORDANCE WITH THE DESIRES OF THE UNDERSIGNED OWNERS AND PROPRIETORS. THE SUBDIVISION SHALL BE KNOWN HEREAFTER AS DENNION SUBDIVISION NO. 2. WE HEREBY RELEASE AND RELINQUISH ALL RIGHTS OF HOMESTEAD. WE HEREBY DEDICATE AND SET APART THE UTILITY EASEMENTS SHOWN HEREON TO THE USE OF THE GENERAL PUBLIC.

IN WITNESS WHEREOF WE HAVE HEREUNTO SET OUR HAND THIS 9th DAY OF September, 1982.

DENNION CONSTRUCTION, INC.

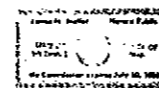
ATTEST: *Lynn H. Dennion*
LYNN H. DENNION
SECRETARY-TREASURER

Daniel D. Dennion
DANIEL D. DENNION
PRESIDENT

STATE OF WYOMING } 55
COUNTY OF PARK

THE FOREGOING CERTIFICATE OF DEDICATION WAS ACKNOWLEDGED BEFORE ME BY DANIEL D. DENNION, PRESIDENT, AND LYNN H. DENNION, SECRETARY-TREASURER, THIS 7th DAY OF September, 1982. WITNESS MY HAND AND OFFICIAL SEAL.

MY COMMISSION EXPIRES: 7-1-85



Janice M. Muller
NOTARY PUBLIC

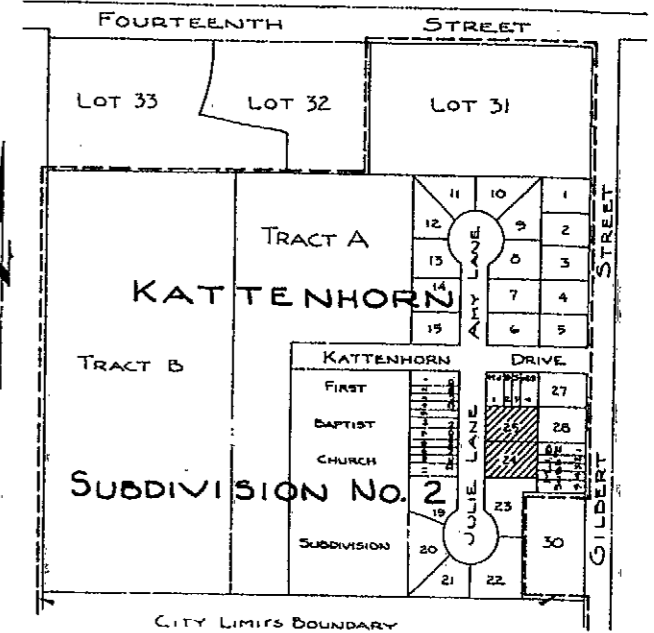
CERTIFICATE OF SURVEYOR

STATE OF WYOMING } 55
COUNTY OF PARK

I, DARVIN D. DIETZ OF POWELL, WYOMING, HEREBY CERTIFY THAT BETWEEN AUGUST 26 AND AUGUST 27, 1982, DENNION SUBDIVISION NO. 2 WAS SURVEYED BY ME OR UNDER MY DIRECTION; THAT SAID SUBDIVISION IS CORRECTLY DESCRIBED IN THE OWNER'S CERTIFICATE OF DEDICATION ON THIS PLAT WHICH IS DRAWN TO A SCALE OF 1 INCH = 20 FEET. THE DIMENSIONS OF LOTS ARE GIVEN IN FEET AND DECIMALS OF A FOOT, AND ANY SURPLUS OR DEFICIENCY IS DISTRIBUTED UNIFORMLY IN PROPORTION TO THE MEASUREMENTS SHOWN ON THIS PLAT. THE WEST LINE OF LOTS 24 & 25, BEARING N. 00° 01' 00" E., WAS USED AS THE BASIS FOR ALL BEARINGS SHOWN. LOT CORNERS ARE AS SHOWN ON THIS PLAT. THE INTERIOR LOT LINES SHOWN ARE INTENDED TO PASS DIRECTLY THRU THE PARTY WALLS BETWEEN EACH UNIT OF THE TOWN HOUSE STRUCTURE. EACH LOT BEARS ITS OWN NUMBER.

WYOMING REGISTRATION NO. 696 P.E. & L.S.

Darvin D. Dietz
DARVIN D. DIETZ



VICINITY MAP
SCALE: 1" = 200'

APPROVALS

APPROVED BY THE PLANNING AND ZONING COMMISSION OF THE CITY OF POWELL, WYOMING, THIS 7th DAY OF September, 1982.

Richard W. Headler SECRETARY
W. P. H. CHAIRMAN

APPROVED THIS 7th DAY OF Sept, 1982, BY THE CITY COUNCIL OF POWELL, WYOMING.

BY: *Richard W. Headler*
RICHARD W. HEADLER - MAYOR
ATTEST: *Ross Duchan*
ROSS DUCHAN - CITY CLERK

STATE OF WYOMING } 55
COUNTY OF PARK

THE FOREGOING WAS ACKNOWLEDGED BEFORE ME BY RICHARD W. HEADLER, MAYOR, AND ROSS DUCHAN, CITY CLERK, THIS 7th DAY OF Sept, 1982. WITNESS MY HAND AND OFFICIAL SEAL.

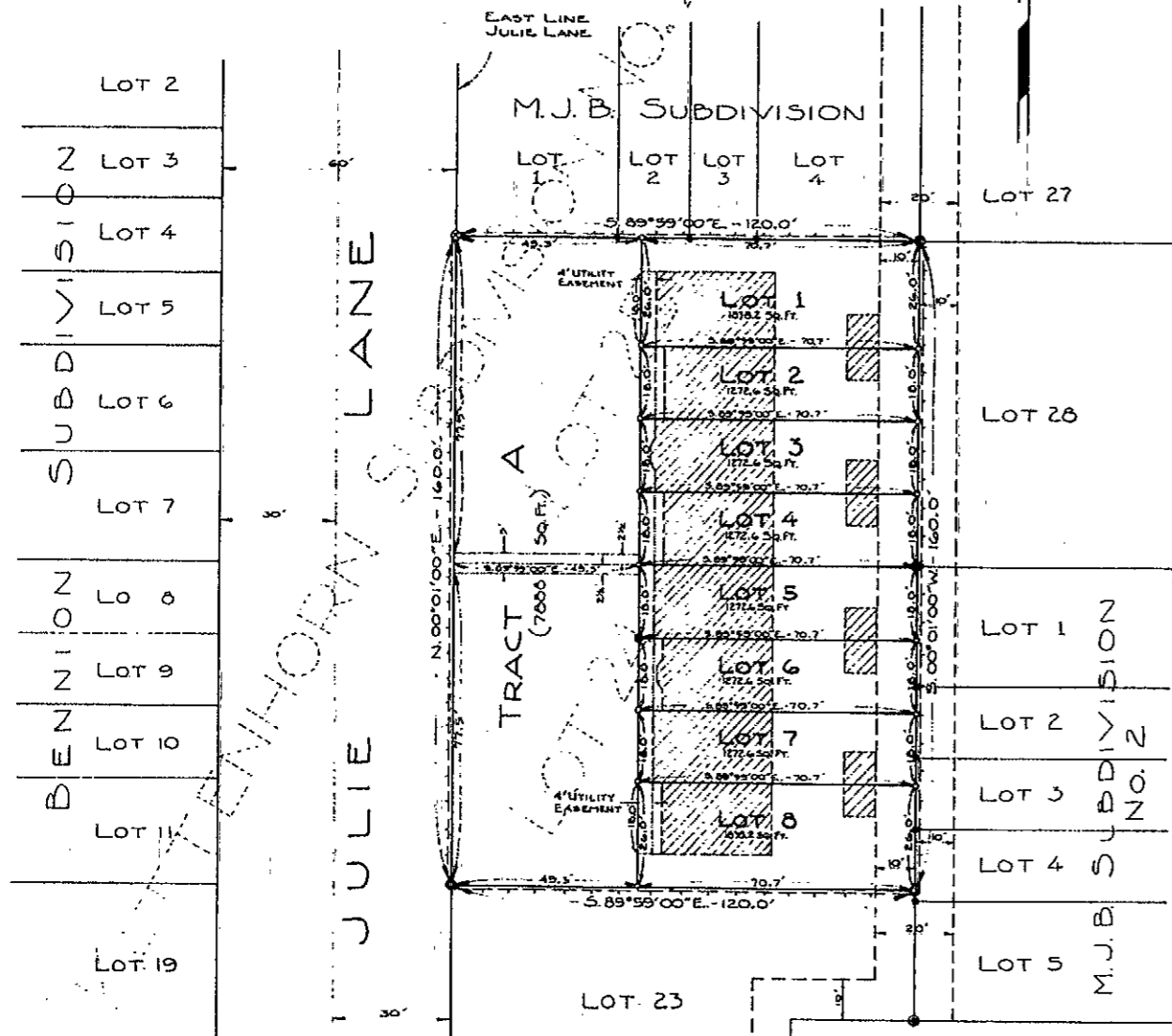
MY COMMISSION EXPIRES 7/10/85
Arduce R. Burbaum
NOTARY PUBLIC

DENNION CONSTRUCTION, INC.
POWELL, WYOMING

PLAT SHOWING
DENNION SUBDIVISION NO. 2
A RESUBDIVISION OF
LOTS NO. 24 & 25 OF THE KATTENHORN SUBDIVISION NO. 2
WITHIN:
LOT 74-C OF LOT 74, T. 55 N., R. 99 W. - SIXTH P.M.
CITY OF POWELL, PARK COUNTY, WYOMING

GRAHAM, DIETZ & ASSOCIATES - CONSULTING ENGINEERS
CODY & POWELL, WYOMING - AUGUST, 1982.

10 September
11 9:25
Rosetta Greenfield



PLAN
SCALE: 1" = 20'

LEGEND

- STANDARD BRASS CAP FOUND IN PLACE THIS SURVEY SHOWN THUS: ●
- ORIGINAL BRASS CAP FOUND DESTROYED BY EQUIPMENT - REPLACED BY STANDARD BRASS CAP & POST THIS SURVEY: ○
- BOUNDARY OF DENNION SUBDIVISION NO. 2 SHOWN THUS: ---
- INTERIOR LOT LINES SHOWN THUS: - - - -
- ADJACENT PROPERTY LINES SHOWN THUS: - - - -
- TOWNHOUSES AND STORAGE BUILDINGS SHOWN THUS: [Hatched Box]
- EXISTING UTILITY EASEMENTS SHOWN THUS: [Dashed Line]
- FORMER LOT LINE SHOWN THUS: - - - -
- 2" x 30" G.I. PIPE WITH STAMPED BRASS CAP SET THIS SURVEY SHOWN THUS: ●
- 5/8" x 18" REDAR WITH ALUMINUM CAP SET AS PROPERTY CORNER THIS SURVEY SHOWN THUS: ○
- PROPOSED UTILITY EASEMENTS SHOWN THUS: - - - -
- M.J.B. SUBDIVISION CORNERS SHOWN THUS: ●
- M.J.D. SUBDIVISION NO. 2 CORNERS SHOWN THUS: ○
- "X" IN CONCRETE SET AS PROPERTY CORNER THIS SURVEY SHOWN THUS: X