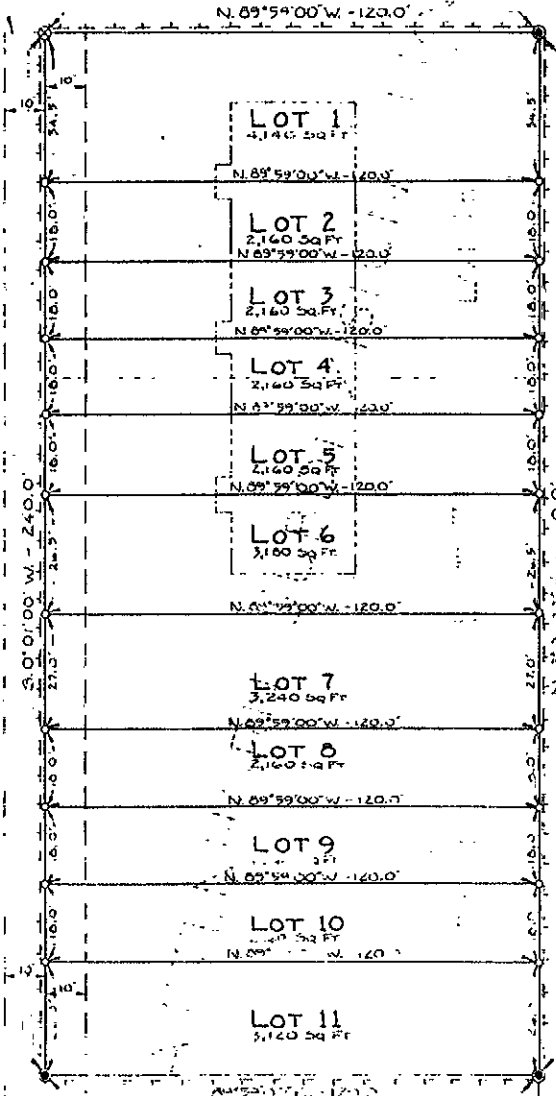


SOUTH LINE
KATTENHORN DRIVE

KATTENHORN DRIVE

FIRST BAPTIST CHURCH SUBDIVISION



PLAN

LEGEND

- BOUNDARY OF THE BENNION SUBDIVISION SHOWN THIS
- ADJACENT PROPERTY LINES SHOWN THIS
- EXISTING UTILITY EASEMENTS SHOWN THIS
- PROPOSED UTILITY EASEMENTS SHOWN THIS
- PROPOSED UTILITY EASEMENTS SHOWN THIS
- 2" x 3/4" PIPE WITH STAMPED DRAWING SET AS PROPERTY CORNER THIS SURVEY SHOWN THIS
- 2" x 3/4" PIPE WITH STAMPED DRAWING FOUND IN PLACE THIS SURVEY SHOWN THIS
- FURNISH LOT LINE SHOWN THIS
- 3" x 10" REDAS WITH ALUMINUM TAP SET AS PROPERTY CORNER THIS SURVEY SHOWN THIS

JULIE LANE

CERTIFICATE OF DEDICATION

STATE OF WYOMING } SS
COUNTY OF PARK

WE, THE UNDERSIGNED, DO HEREBY CERTIFY AS FOLLOWS: WE ARE THE OWNERS AND PROPRIETORS OF LOTS 16, 17 & 18 OF THE KATTENHORN SUBDIVISION NO 2 WITHIN LOT 74-C OF LOT 74, T. 55 N., R. 99 W. OF THE 6TH P.M., CITY OF POWELL, PARK COUNTY, WYOMING, ACCORDING TO THE GOVERNMENT RESURVEY.

WE HAVE CAUSED SAID LAND TO BE FURTHER SUBDIVIDED, SURVEYED AND PLATTED AS SHOWN HEREON. THE SUBDIVISION OF SAID LAND, AS APPEARS ON THIS PLAT, IS WITH THE FREE CONSENT AND IN ACCORDANCE WITH THE DESIRES OF THE UNDERSIGNED OWNERS AND PROPRIETORS. THE SUBDIVISION SHALL BE KNOWN HEREAFTER AS THE BENNION SUBDIVISION. WE HEREBY RELY ON AND THE RECORDS WILL BE KEPT OF RECORD TO SAID.

IN WITNESS WHEREOF WE HAVE HEREUNTO SET OUR HAND THIS 13th DAY OF JULY, 1961.

DANIEL D. DENNION & LYNN H. DENNION
HUSBAND & WIFE

Daniel D. Dennion
DANIEL D. DENNION
Lynn H. Dennion
LYNN H. DENNION

STATE OF WYOMING } SS
COUNTY OF PARK

THE FOREGOING CERTIFICATE OF DEDICATION WAS ACKNOWLEDGED BEFORE ME BY DANIEL D. DENNION AND LYNN H. DENNION THIS 13th DAY OF JULY, 1961. WITNESS MY HAND AND OFFICIAL SEAL.

MY COMMISSION EXPIRES: 1964
DARWIN D. DIEZ
NOTARY PUBLIC

CERTIFICATE OF SURVEYOR

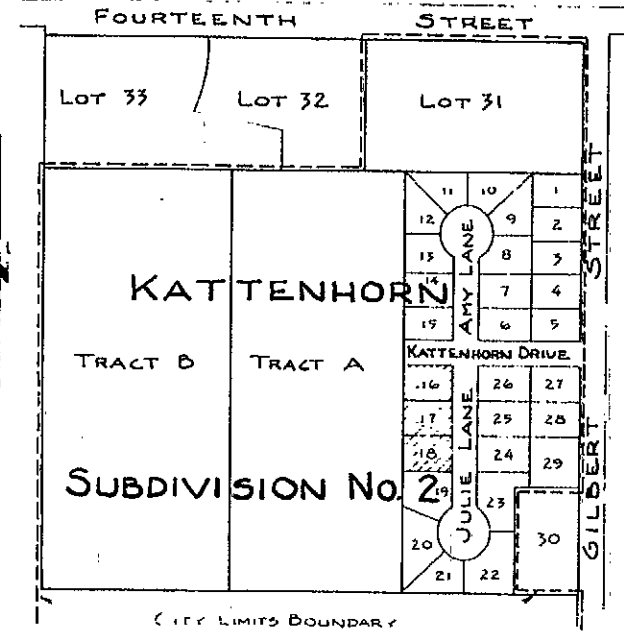
STATE OF WYOMING } SS
COUNTY OF PARK

I, DARWIN D. DIEZ OF POWELL, WYOMING, DO HEREBY CERTIFY THAT ON JULY 13, 1961, THE DENNION SUBDIVISION WAS SURVEYED BY ME OR BY MY DEPUTY THAT SAID SUBDIVISION IS CORRECTLY DESCRIBED BY THE OWNER'S CERTIFICATE OF DEDICATION ON THIS PLAT, WHICH IS DRAWN TO A SCALE OF 1 INCH = 20 FEET. THE DIMENSIONS OF LOTS ARE 147 FEET AND 26 FEET OF A LOT, AND ANY VARIATIONS IN DIMENSIONS OF LOTS DESCRIBED UNFAIRLY IN PROPORTION TO THE MEASUREMENTS SHOWN ON THIS PLAT. THE WEST LINE OF LOTS 16, 17, & 18, WAS USED AS THE BASIS FOR ALL DEARINGS SHOWN. LOT 16, 17, & 18, ARE SHOWN ON THIS PLAT. THE INTERIOR LOT LINES SHOWN ARE INTENDED TO PASS THROUGH THE PARTY WALLS BETWEEN EACH UNIT OF THE BENNION SUBDIVISION. I HAVE SET AND OWN NUMBER, AND THAT THE CERTIFICATE OF DEDICATION WAS THE BASIS FOR THE SURVEY AND THAT THE SURVEY WAS MADE IN ACCORDANCE WITH THE RECORDS TO SAID.

STATE OF WYOMING } SS
COUNTY OF PARK

DARWIN D. DIEZ
NOTARY PUBLIC

T. 55 N., R. 99 W.
PARK COUNTY, WYOMING



VICINITY MAP

SCALE: 1" = 200'

APPROVALS

APPROVED BY THE PLANNING AND ZONING COMMISSION OF THE CITY OF POWELL, WYOMING, THIS 13th DAY OF JULY, 1961.

SECRETARY CHAIRMAN

APPROVED THIS 13th DAY OF JULY, 1961, BY THE CITY OF POWELL, WYOMING.

BY: RICHARD W. HEADLER - MAYOR
ATTES: ROSS DUCHAN - CITY CLERK

STATE OF WYOMING } SS
COUNTY OF PARK

THE FOREGOING WAS ACKNOWLEDGED BEFORE ME BY RICHARD W. HEADLER, MAYOR, AND ROSS DUCHAN, CITY CLERK, THIS 13th DAY OF JULY, 1961. WITNESS MY HAND AND OFFICIAL SEAL.

MY COMMISSION EXPIRES

NOTARY PUBLIC

13 July 1961
159
Graham, Diez & Associates
Cody & Powell, Wyoming

DAN DENNION
POWELL, WYOMING

PLAT SHOWING
BENNION SUBDIVISION
A RESUBDIVISION OF
LOTS 16, 17 & 18 OF THE KATTENHORN SUBDIVISION NO 2
WITHIN
LOT 74-C OF LOT 74, T. 55 N., R. 99 W. - SIXTH P.M.
CITY OF POWELL, PARK COUNTY, WYOMING

GRAHAM, DIEZ & ASSOCIATES CONSULTING ENGINEERS
CODY & POWELL, WYOMING
JUNE, 1961