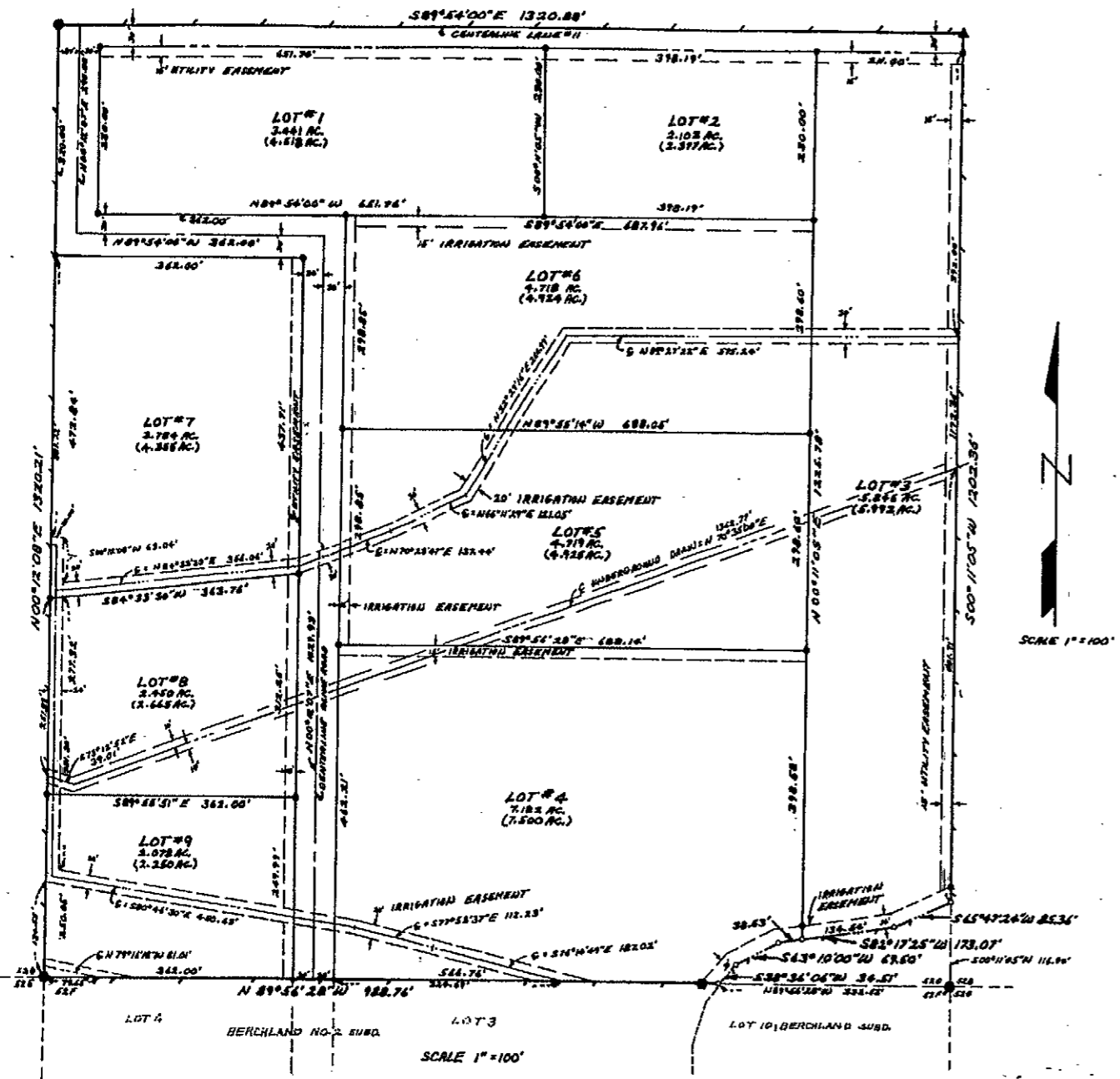


BERCHLAND NO. 3 SUBDIVISION



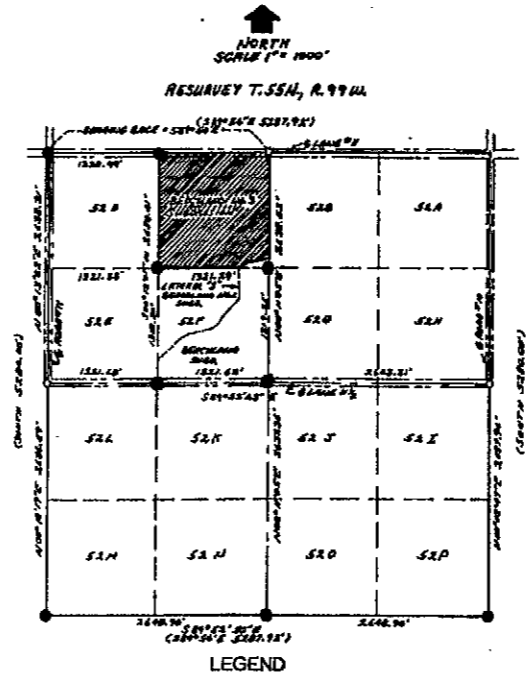
NOTES

- THE PURCHASER/OWNERS OF ANY LOTS WITHIN THE BERCHLAND NO. 3 SUBDIVISION DO NOT HAVE ANY RIGHTS TO THE NATURAL FLOW OF ANY STREAM OR RIVER AND NO RESORT TO THE SUBDIVISION, INCLUDING LOTS, DOES NOT RECONSTRUCT ANY RIGHTS TO THE NATURAL FLOW OF THE STREAM OR RIVER FOR PERSONS LIVING ON THE BANKS OF THE STREAM OR RIVER.
- BEARING BASE = C/O OF S89°54'00"E BETWEEN THE NORTHWEST CORNER OF THE NORTH 1/4 CORNER OF LOT #2, RESURVEY T. 55N, R. 99W.
- NO PROPOSED PUBLIC SEWAGE DISPOSAL SYSTEM
- LOTS #1-9 "STANDARD" SINGLE FAMILY RESIDENTIAL ZONING
- LOT #10 COMMERCIAL RETAIL ZONING
- THE LOCATION OF THE UNDERGROUND DRAINAGE LINES ESTABLISHED FROM THE ORIGINAL NOTES WHICH ARE LOCATED IN THE POWER, WY. OFFICE OF THE SINGULAR HEART MOUNTAIN IRRIGATION DISTRICT.

LEGEND

- 1. Δ = FOUND 1 1/2" IRON PIPE
- 2. ● = FOUND BRASS CAP
- 3. ○ = FOUND 4x4x36 COPPER WELD WITH 1 1/2" BRASS CAP
- 4. ○ = SET 4x4x36 REBAR WITH 3" ALUMINUM CAP
- 5. - - - = IRRIGATION DITCH
- 6. - - - = EASEMENT BOUNDARY
- 7. - - - = 6" LATERAL "S" CANAL
- 8. - - - = UNDERGROUND DRAIN
- 9. TOTAL LOTS = 9
GROSS AREA = 21,506 ACRES - (2,700 AC.)
NET AREA = 18,806 ACRES - (7,125 AC.)
- 10. - - - = SUBDIVISION BOUNDARY

LOCATION MAP



LEGEND

- = BRASS CAPS FOUND
- = SET 4x4x36 COPPER WELD
- = 1 1/2" IRON PIPE FOUND

COUNTY COMMISSIONERS CERTIFICATE AND SUBDIVISION PERMIT

THIS PLAT IS HEREBY APPROVED AND SUBDIVISION PERMIT ISSUED BY THE BOARD OF COUNTY COMMISSIONERS OF PARK COUNTY, WYOMING, THIS 26th DAY OF FEBRUARY, 1984 A.D., FOR FILING AND RECORDING WITH THE CLERK OF PARK COUNTY, WYOMING, AND FOR THE CONFORMANCE TO THE COUNTY OF PARK THE PUBLIC DEDICATION (SHOWN HEREON) SUBJECT TO THE AGREEMENT THAT THE COUNTY OF PARK WILL NOT BE OBLIGATED TO FINANCE, CONSTRUCT OR MAINTAIN ANY IMPROVEMENTS WITHIN THE SUBDIVISION EXCEPT AS SPECIFICALLY AGREED BY THE COUNTY OF PARK AND FURTHER SAID THAT THE BOARD OF COUNTY COMMISSIONERS HAS AND HEREBY GRANTS TO THE PUBLIC DEDICATION (SHOWN HEREON) THE PUBLIC USE OF THE PUBLIC ROADS OR OTHER IMPROVEMENTS DESIGNED TO THE PUBLIC UNTIL THEY ARE CONSTRUCTED AND COMPLETED TO THE SATISFACTION OF THE BOARD OF COUNTY COMMISSIONERS AND ACCEPTED BY THE PROPER AGENCY, IN ITS COMPLETE DISCRETION.

DATED THIS 26th DAY OF FEBRUARY, 1984 A.D.

[Signature]
COUNTY COMMISSIONERS

WITNESS MY HAND AND OFFICIAL SEAL OF THE COUNTY OF PARK, THIS 26th DAY OF FEBRUARY, 1984 A.D.

ATTEST: *[Signature]*
COUNTY CLERK

PLANNING & ZONING COMMISSION CERTIFICATE

THIS PLAT IS RECOMMENDED FOR APPROVAL BY THE BOARD OF COUNTY COMMISSIONERS, PARK COUNTY, WYOMING, ON THIS 26th DAY OF FEBRUARY, 1984 A.D.

[Signature]
CHAIRMAN

[Signature]
SECRETARY

COUNTY CLERKS CERTIFICATE

THIS PLAT WAS FILED FOR THE PUBLIC RECORD IN THE OFFICE OF THE CLERK, PARK COUNTY, WYOMING, AT 2:30 O'CLOCK P.M. ON THE 26th DAY OF FEBRUARY, 1984 A.D., AND IS NOW RECORDED IN BOOK F, PAGE NUMBER 220533

[Signature]
COUNTY CLERK

CERTIFICATE OF DEDICATION

STATE OF WYOMING)
COUNTY OF PARK)

THE UNDERSIGNED, DO HEREBY CERTIFY THAT WE ARE THE OWNERS OF THE REAL PROPERTY DESCRIBED AS FOLLOWS: BEGINNING AT THE NORTH 1/4 CORNER OF LOT #52, RESURVEY T. 55N, R. 99W, 62d PM, PARK COUNTY, WYOMING; THENCE S00°10'05"W FOR A DISTANCE OF 1202.36 FEET TO THE CENTERLINE OF THE LATERAL "S" CANAL; THENCE S65°47'24"W FOR A DISTANCE OF 86.36 FEET; THENCE S82°17'25"W FOR A DISTANCE OF 173.07 FEET; THENCE S63°10'00"W FOR A DISTANCE OF 67.50 FEET; THENCE S38°34'04"W FOR A DISTANCE OF 34.51 FEET TO THE SOUTH LINE OF LOT #52 OF SAID LOT #52; THENCE N89°54'28"W FOR A DISTANCE OF 1320.21 FEET TO THE NORTHWEST CORNER OF SAID LOT #52; THENCE N00°11'08"E FOR A DISTANCE OF 1320.21 FEET TO THE NORTHWEST CORNER OF SAID LOT #52; THENCE S89°54'00"E FOR A DISTANCE OF 1320.88 FEET TO THE POINT OF BEGINNING; AND CONTAINING 39.06 ACRES OF WHICH 36.89 ACRES ARE IN LOTS AND APPROXIMATELY 3.18 ACRES ARE IN PUBLIC STREET RIGHT-OF-WAYS; AND HAVE LAD OUT, PLATTED, AND SUBDIVIDED INTO LOTS THE BERCHLAND NO. 3 SUBDIVISION IN PARK COUNTY, WYOMING, WITH THE FREE CONSENT AND IN ACCORDANCE WITH THE DESIRES OF THE UNDERSIGNED OWNERS; AND DO HEREBY GRANT TO PARK COUNTY, WYOMING, FOR THE PUBLIC USE OF THE RIGHT-OF-WAYS SHOWN HEREON AND THE UTILITY AND DRAINAGE EASEMENTS SO NOTED HEREON AND DO FURTHER STATE THAT WE HEREBY RELEASE AND RELINQUISH ALL RIGHTS OF HOMESTEAD AND THAT THE SUBDIVISION SHALL BE SUBJECT TO THE COVENANTS FILED AND RECORDED FOR THIS SUBDIVISION IN THE OFFICE OF THE CLERK OF PARK COUNTY, WYOMING.

EXECUTED THIS 31st DAY OF DECEMBER, 1984 A.D.

[Signature] *[Signature]*
GEORGE BERCHTOLD-MILNER PHILLIS BERCHTOLD-WIFE

STATE OF WYOMING)
COUNTY OF PARK)

THE FOREGOING DEDICATION WAS ACKNOWLEDGED BEFORE ME BY GEORGE & PHILLIS BERCHTOLD THIS 31st DAY OF DECEMBER, 1984 A.D.

WITNESS MY HAND AND OFFICIAL SEAL.

[Signature]
NOTARY PUBLIC

NY COMMISSIONER EXAMINED: JULY 29 1985

CERTIFICATE OF SURVEYOR

STATE OF WYOMING)
COUNTY OF PARK)

I, PAUL A. CAMPBELL, A LAND SURVEYOR, REGISTERED IN THE STATE OF WYOMING BY REGISTRATION NUMBER 25715, HEREBY CERTIFY THAT BETWEEN THE DATES JANUARY 24, 1984 AND DECEMBER 31, 1984 THE BERCHLAND NO. 3 SUBDIVISION WAS MEASURED AND SURVEYED BY ME OR ASSISTED BY ME OR UNDER MY CLOSE PERSONAL SUPERVISION AND THAT THE LAND SURVEYED IS CORRECTLY DESCRIBED IN THE DEDICATION AND THAT THE SURVEYING THEREOF IS CORRECTLY SHOWN IN THE PLAT, AND WAS MADE FROM AN ACCURATE SURVEY OF SAID PROPERTY BY ME AND WHETHER BY SURVEYING CORRECTLY SHOWS THE LOCATION AND DIVISIONS OF THE LOTS, SECTIONS, AND STREETS, OF SAID SUBDIVISION IN COMPLIANCE WITH THE PARK COUNTY REGISTRATION REQUIREMENTS; AND LIST AS OBLIGATED CONVEYANCE LOTS CORNER POINTS AND ALL INFORMATION REQUIRED AND THE REQUIREMENTS OF W.S. 2-10-10 WHICH ARE CORRECTLY SHOWN, AND THAT THE MEASUREMENTS AND LOTS CORNER POINTS THE SURVEY WERE CORRECTLY SET AND THE MEASUREMENTS ARE IN ACCORDANCE WITH THE SURVEYING AND ALIGNMENT OF THE SURVEY CLASSED TO AN ACCURACY OF ONE PART IN FIFTY THOUSAND OR BETTER. IN WITNESS WHEREOF I HAVE SET MY HAND AND SEAL THE 31st DAY OF DECEMBER, 1984 A.D.

[Signature]
PAUL A. CAMPBELL (25715)

STATE OF WYOMING)
COUNTY OF PARK)

THE FOREGOING CERTIFICATE WAS ACKNOWLEDGED BEFORE ME BY PAUL A. CAMPBELL THIS 31st DAY OF DECEMBER, 1984 A.D.

WITNESS MY HAND AND OFFICIAL SEAL.

NY COMMISSIONER EXAMINED: JULY 29 1985 NOTARY PUBLIC

BERCHLAND No. 3 SUBDIVISION

LOCATED IN
LOT 52-C, LOT 52, RESURVEY T. 55N, R. 99W,
6th PM., PARK COUNTY, WYOMING

CAMPBELL & ASSOCIATES LAND SURVEYORS
CORVALLIS, OR CORVALLIS, OR