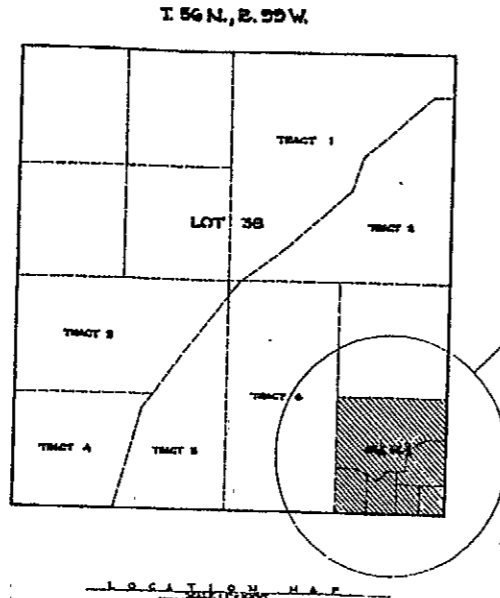


CERTIFICATE OF ADEQUACY

STATE OF WYOMING
COUNTY OF PARK



NO PROPOSED PUBLIC
SEWAGE DISPOSAL SYSTEM
NO PROPOSED DOMESTIC
WATER SERVICE
NO PUBLIC MAINTENANCE
OF STREETS OR ROADS

LOCATION MAP

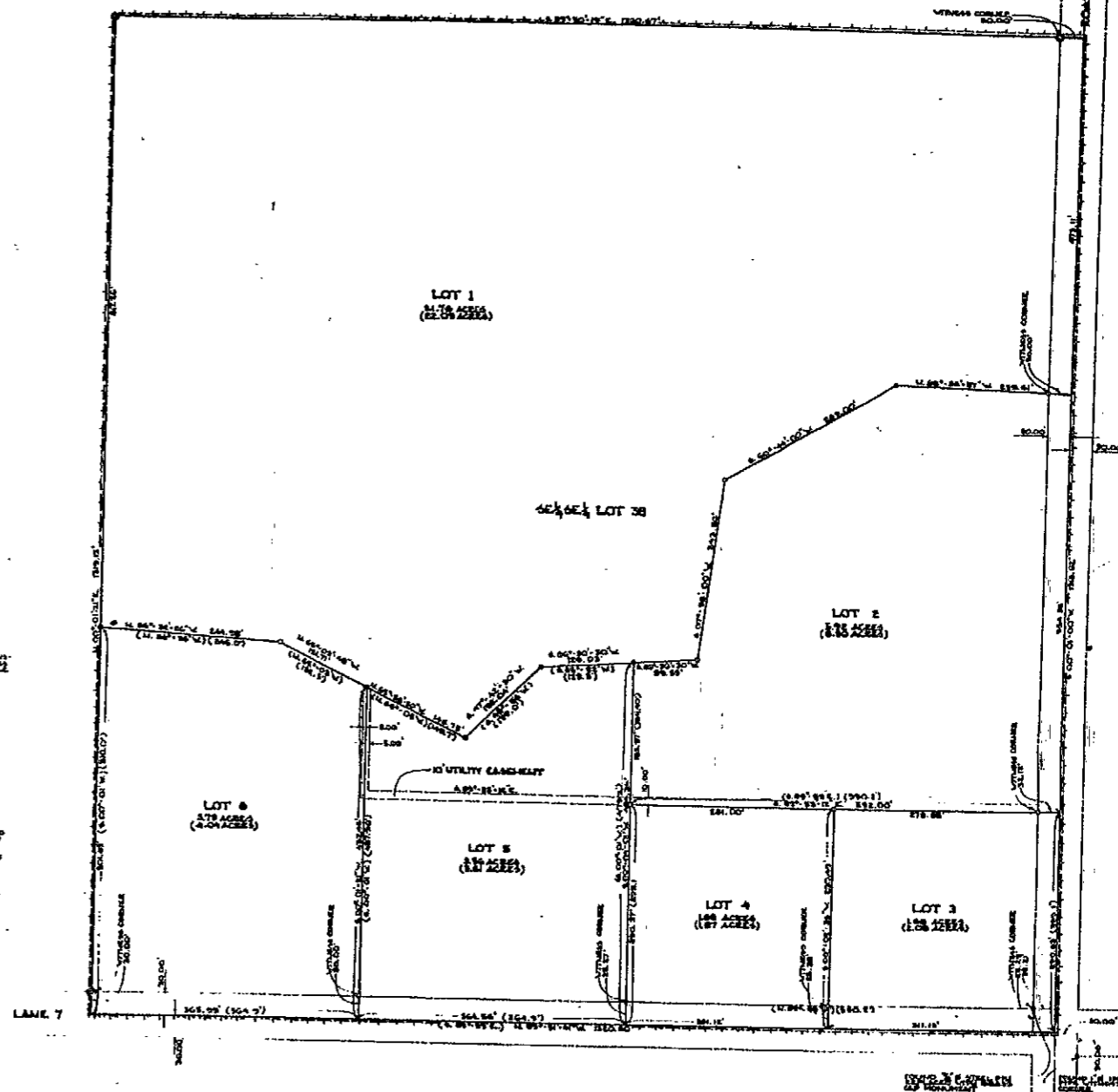
Wesley W. Reed
Notary Public
STATE OF WYOMING
COUNTY OF PARK
BY DEEDMAN: [Signature]
MARCH 7, 1977

STATE OF WYOMING
COUNTY OF PARK

STATE OF WYOMING
COUNTY OF PARK

STATE OF WYOMING
COUNTY OF PARK

STATE OF WYOMING
COUNTY OF PARK



DETAILED MAP

[Signature]
Notary Public

[Signature]
Notary Public

STATE OF WYOMING
COUNTY OF PARK

STATE OF WYOMING
COUNTY OF PARK

STATE OF WYOMING
COUNTY OF PARK

STATE OF WYOMING
COUNTY OF PARK

[Signature]
Notary Public

[Signature]
Notary Public

[Signature]
Notary Public

[Signature]
Notary Public

A.P.P.S.O.X.A.L.S.

3 MARCH
[Signature]
COUNTY CLERK

PLAT OF
BITTER CREEK SUBDIVISION
LOCATED IN
T. 56 N., R. 55 W.,
PARK COUNTY, WYOMING

State of Wyoming
County of Park
This instrument was filed for record
on the 7th day of March
1977 at 2:30 o'clock P.M. and
is recorded in Book 100, page 46
of the Public Records of the County
of Park, Wyoming.
Filed at 2:30 P.M., March 7, 1977
By [Signature]
Notary Public

PLAT OF
BITTER CREEK SUBDIVISION
LOCATED IN
T. 56 N., R. 55 W.,
PARK COUNTY, WYOMING
PREPARED BY
SANDWICH ASSOCIATES, CORP., WYOMING
CONSULTING ENGINEERS & LAND SURVEYORS
DECEMBER, 1976