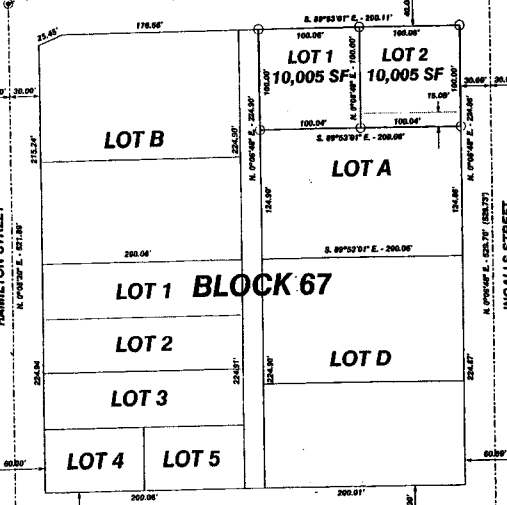


BLOCK 53

WASHINGTON STREET

S. 89°53'01" E. - 480.00' (480.00')



LOT B

LOT 1
10,005 SF

LOT 2
10,005 SF

LOT A

LOT 1 BLOCK 67

LOT 2

LOT D

LOT 3

LOT 4

LOT 5

BLOCK 75

ADAMS STREET

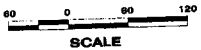
S. 89°54'00" E. - 870.00' (870.00')

HAMILTON STREET

N. 89°53'01" E. - 821.88'

INGALLS STREET

BLOCK 66



LEGEND

- _____ SUBDIVISION BOUNDARY LINES
- _____ PARCEL DIVISION LINES
- _____ ADJACENT LOT & BLOCK LINES
- _____ UTILITY EASEMENT
- MEASURED DISTANCE 1010.23'
- RECORD DISTANCE (1010.20')
- SET ALUMINUM CAP
- FOUND BRASS CAP
- ◆ FOUND SPIKE

CERTIFICATE OF DEDICATION

STATE OF WYOMING)) SS
COUNTY OF PARK))

Know all persons by these presents: That William J. Metzler and Memorie D. Metzler, Trustees of the 2003 Metzler Family Trust are the owners of a parcel of land located in Lot A, Block 67, T.55N., R.99W., 6th P.M., Park County, Wyoming.

Said parcel of land being more particularly described as follows:

The North 100 feet of Lot A, Block 67, ORIGINAL TOWN (NOW CITY) OF POWELL, according to the records of the County Clerk and Recorder of Park County, State of Wyoming.

We the undersigned, all heirs and/or assigns are proponents for participating in the subdivision of the above described property; and by these presents do hereby dedicate and set apart the easements and public lands with the purpose so noted hereon for the public use;

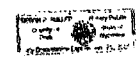
William J. Metzler
William J. Metzler - Trustee

Memorie D. Metzler
Memorie D. Metzler - Trustee

The foregoing certificate was acknowledged before me by William J. Metzler and Memorie D. Metzler on this 24th day of OCT, 2004. Witness my hand and official seal.

K. C. Becker
Notary Public

My commission expires: 1-24-05



APPROVALS

STATE OF WYOMING)) SS
COUNTY OF PARK))

City Planning and Zoning Board

Recommended for approval this 1 day of Nov, 2004 by the City Planning and Zoning Board of Powell, Wyoming.

By Chairman *Carol Richendler*
Carol Richendler

Approved this 1 day Nov, 2004 by the City Council of Powell, Wyoming.

By Mayor *James L. Milburn*
James L. Milburn



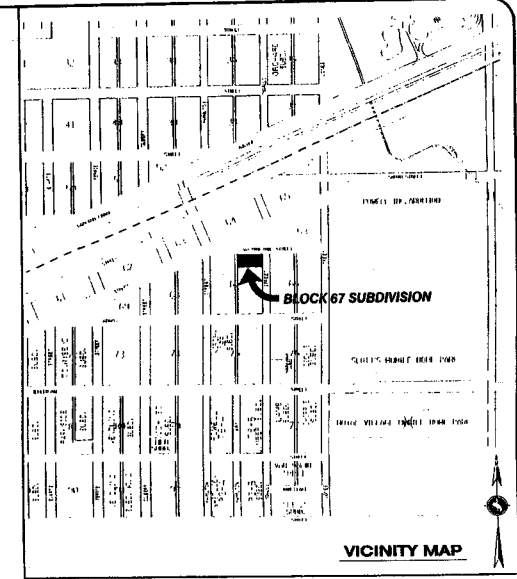
Attested by City Clerk *Ardyce R. Busboom*
Ardyce R. Busboom

COUNTY CLERK'S CERTIFICATE

This Plat was filed for the public record in the office of the Clerk, Park County, Wyoming, at 8:00 O'Clock P.M. on the 4th day of November, 2004, and is duly recorded in Book G, Page Number 155.

Karen Carter
Park County Clerk

By *Christine Eck*
Deputy



BLOCK 67 SUBDIVISION

VICINITY MAP

CERTIFICATE OF SURVEYOR

STATE OF WYOMING)) SS
COUNTY OF PARK))

I, Paul R. Campbell of Cody, Wyoming hereby certify that this map is based upon field and record data and that it is a final plat of the Block 67 Subdivision located in Resurvey T.55N., R.99W., 6th P.M. City of Powell, Park County, Wyoming



PAUL R. CAMPBELL
WYOMING REGISTRATION NO. 2571 L.S.

FINAL PLAT
SHOWING

BLOCK 67 SUBDIVISION

A RESUBDIVISION OF THE NORTH 100 FT OF LOT A, BLOCK 67, ORIGINAL TOWN (NOW CITY) OF POWELL, Resurvey T.55N., R.99W., 6th P.M. City of Powell, Park County, Wyoming



OCTOBER 11, 2004