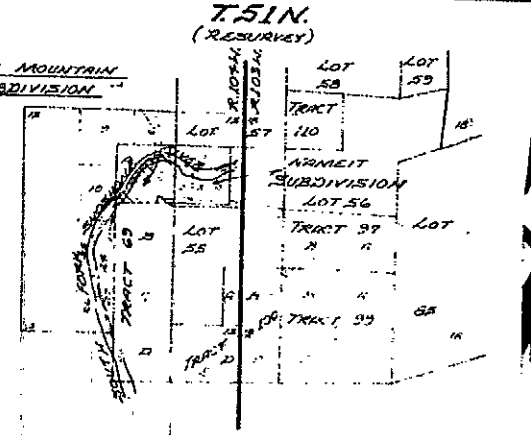


NOTE: THE COURSE OF THE BROWN MOUNTAIN SUBDIVISION HAS BEEN NOTICED THE STATE BOARD OF CONTROL AND THE PARK COUNTY BOARD OF COMMISSIONERS OF OUR INTENT TO RESURVEY ALL SUBDIVISION LINES AND TO ROUND OFF FROM THE CURVE ROLLING CURVATURES OF THE SURVEY NO. 2 WITH ADJUSTMENT TO THE LANDS WITHIN THE BOUNDARIES OF THE BROWN MOUNTAIN SUBDIVISION.

SUBDIVISION PERMIT

A SUBDIVISION PERMIT IS HEREBY GRANTED FOR THE SUBDIVISION BY PAUL A. BROUGH, JUNIOR, DATED MARCH 10, 1932, AS THE COUNTY CLERK OF PARK COUNTY, WYOMING, AND THE PLAN IS HEREBY APPROVED.

Paul A. Brough
COUNTY CLERK



CERTIFICATE OF SURVEYOR

STATE OF WYOMING } S.S.
COUNTY OF PARK }

I, PAUL A. BROUGH, A LAND SURVEYOR REGISTERED IN WYOMING BY REGISTRATION NUMBER 2542 U.S., HEREBY CERTIFY AS FOLLOWS: BETWEEN AUGUST 12, 1930 AND SEPTEMBER 7, 1932 THE BROWN MOUNTAIN SUBDIVISION WAS SURVEYED UNDER MY DIRECTION BY LYNN Z. THOMAS FOR SINGLE WORK I STAND FORTH AS RESPONSIBLE. THE LAND SURVEYED IS CORRECTLY DESCRIBED IN THE UNDER CERTIFICATE OF DEDICATION AND THE SUBDIVISION THEREOF IS CORRECTLY SHOWN ON THIS PLAN WHICH IS DRAWN TO THE SCALE INDICATED. DIMENSIONS ARE GIVEN IN FEET AND DECIMALS. DIRECTIONS ARE GIVEN IN DEGREES, MINUTES AND SECONDS OF ARC AND REFERRED TO THE TRUE MERIDIAN WHICH WAS DETERMINED FROM NOTES OF C. BEINGEN CORNER 1 OF TRACT 69 AND THE SOUTHWEST CORNER OF TRACT 69-A ALSO BEING CORNER NO. 3 OF TRACT 75. I AM FAMILIAR WITH THE PARK COUNTY SUBDIVISION REGULATIONS AND BELIEVE THIS SUBDIVISION COMPLIES WITH THEM IN EVERY RESPECT. LOST OR ALTERED GOVERNMENT LAND CORNER MONUMENTS WERE REPLACED OR RELOCATED. SUBDIVISION EASEMENTS, LOTS OR TRACTS AND ALIQUOT PARTS WERE MADE AS REQUIRED. CERTIFIED LAND CORNER MONUMENT CERTIFICATES HAVE BEEN RECORDED IN THE OFFICE OF THE PARK COUNTY CLERK FOR EVERY SURVEY MONUMENT RELOCATED DURING THE SURVEY OF THIS SUBDIVISION IN ACCORDANCE WITH THE REQUIREMENTS OF N.E.S. 34 215 THROUGH 216-224. MONUMENTS SHOWN AND ALL LOT CORNERS MARKING THIS SURVEY WERE ACTUALLY SET AND THE MONUMENTS ARE AS DESCRIBED HEREON. ALL ELEMENTS OF THE SURVEY CLOSE TO AN ACCURACY OF ONE PART IN FIVE THOUSAND OR BETTER.

Paul A. Brough
LAND SURVEYOR

CERTIFICATE OF DEDICATION

STATE OF WYOMING } S.S.
COUNTY OF PARK }

I, THE UNDERSIGNED, DO HEREBY CERTIFY AS FOLLOWS: I AM THE OWNER OF THE FOLLOWING DESCRIBED PART:

THAT PART OF TRACT 69-A THAT IS SOUTH AND EAST OF THE BOUNDARY OF THE BROWN MOUNTAIN SUBDIVISION AS SHOWN ON THE PLAN OF THE BROWN MOUNTAIN SUBDIVISION RECORDED IN THE OFFICE OF THE PARK COUNTY CLERK IN WYOMING, ACCORDING TO THE TERMS OF THE DEEDS AND DEEDS AND DEEDS AS FOLLOWS:

Paul A. Brough
LAND SURVEYOR

**NO PROPOSED PUBLIC MAINTENANCE OF ROADS
NO PROPOSED PUBLIC SEWAGE DISPOSAL SYSTEM**

THE PURCHASERS/OWNERS OF ANY LOTS WITHIN "BROWN MOUNTAIN SUBDIVISION" DO NOT HAVE ANY RIGHTS TO THE NATURAL FLOW OF ANY STREAM OR RIVER WITHIN OR ADJACENT TO BROWN MOUNTAIN SUBDIVISION. WYOMING LAW DOES NOT RECOGNIZE ANY RIPARIAN RIGHTS TO THE NATURAL FLOW OF THIS STREAM OR RIVER FOR PERSONS LIVING ON THE BANKS OF THIS STREAM OR RIVER.

30 MARCH 1932
Paul A. Brough
LAND SURVEYOR

LEGEND

NUMBER OF LOTS IN BROWN MOUNTAIN SUBDIVISION	2
ROADS NOT FOUND ON PLAN	●
TRAILS FOUND ON PLAN	○
PLACES WHERE MONUMENTS FOUND IN PLACE	●
PLACES WHERE MONUMENTS NOT FOUND IN PLACE	○
RECORD DIMENSIONS SHOWN THIS SURVEY	3-199'
DIMENSIONS SHOWN BY SURVEYOR	3-199'
REMARKS OF BROWN MOUNTAIN SUBDIVISION	
"G.P." FOUND IN FIELD	
INDICATES GROSS ACRES	11.42 ACRES
INDICATES NET ACRES	(10.78 ACRES)

**PLAT SHOWING
BROWN MOUNTAIN SUBDIVISION
BEING PART OF TRACT 69-A
T.51N., R.104W. OF THE 6th P.M.
RESURVEY, PARK COUNTY, WYOMING**

REVISION DATE: _____

Paul A. Brough
LAND SURVEYOR